

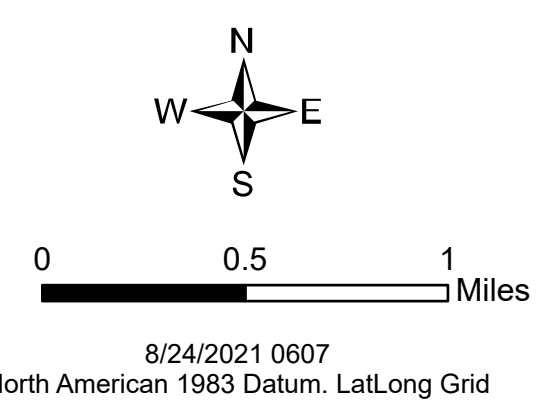
115°10'W

115°5'W

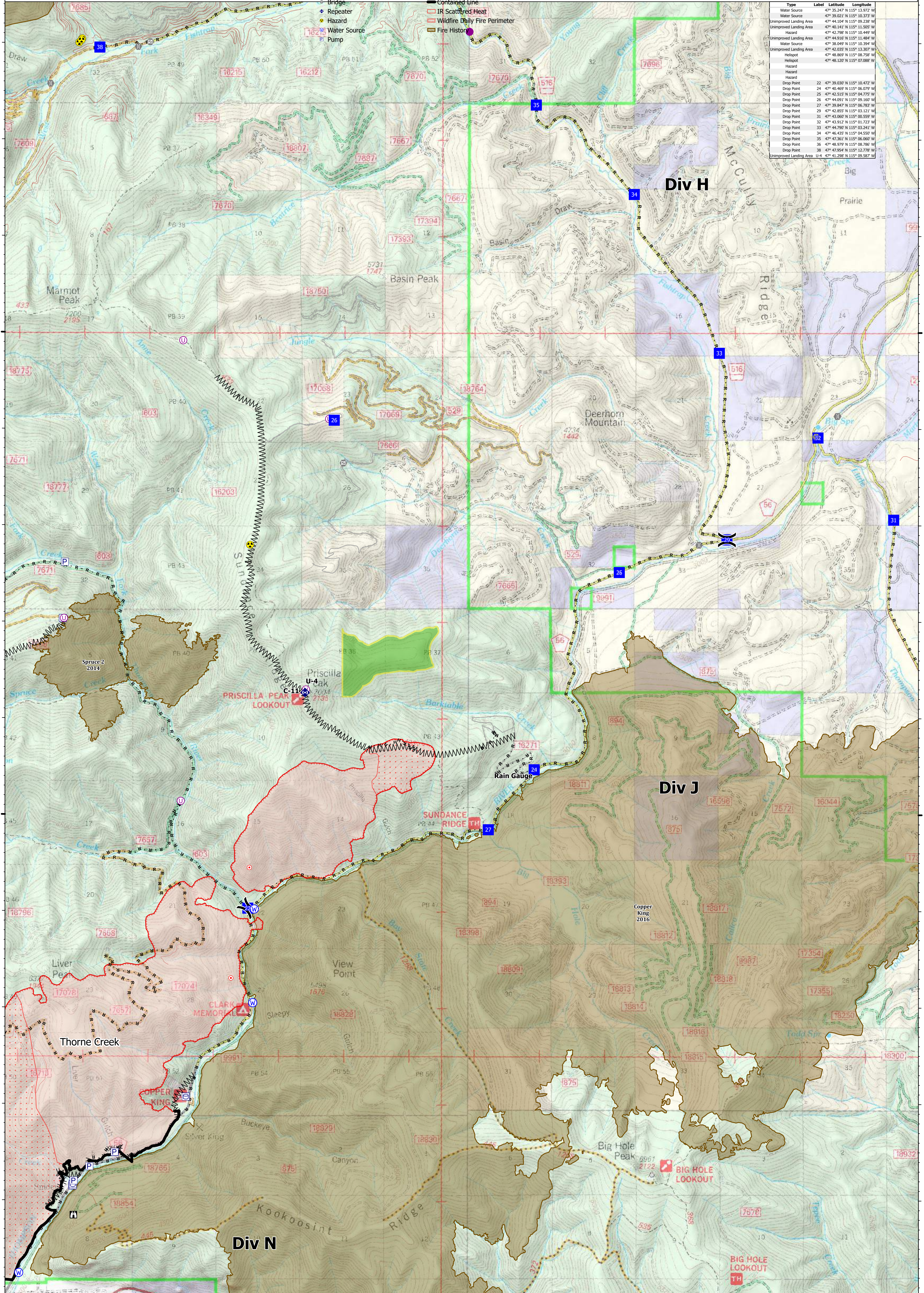


**Ops Map**  
 West Lolo Complex - Div J  
 MT-LNF-000893  
 8/24/2021  
 38688 acres at 8/17/21 @ 1600

- Helispot
- Unimproved Landing Area
- ⚡ Division Break
- Drop Point
- Closure
- ⊞ Lookout
- Hot Spot - Spot Fire
- Other
- Gate
- Bridge
- Repeater
- Hazard
- Water Source
- Pump
- Water Tank
- ⊞ Completed Dozer Line
- ⊞ Completed Fuel Break
- ⊞ Completed Hand Line
- ⊞ Completed Mixed Construction Line
- ⊞ Completed Plow Line
- ⊞ Completed Road as Line
- Access or Improved Road
- Fire Edge
- Contained Line
- IR Scattered Heat
- Wildfire Daily Fire Perimeter
- Fire History



| Type                    | Label | Latitude                     | Longitude |
|-------------------------|-------|------------------------------|-----------|
| Water Source            |       | 47° 35.247' N 115° 13.972' W |           |
| Water Source            |       | 47° 39.021' N 115° 10.373' W |           |
| Unimproved Landing Area |       | 47° 44.108' N 115° 09.238' W |           |
| Unimproved Landing Area |       | 47° 40.141' N 115° 11.505' W |           |
| Hazard                  |       | 47° 42.798' N 115° 10.449' W |           |
| Unimproved Landing Area |       | 47° 44.916' N 115° 11.484' W |           |
| Unimproved Landing Area |       | 47° 38.009' N 115° 10.594' W |           |
| Helispot                |       | 47° 48.865' N 115° 08.758' W |           |
| Helispot                |       | 47° 48.120' N 115° 07.888' W |           |
| Hazard                  |       |                              |           |
| Hazard                  |       |                              |           |
| Drop Point              | 22    | 47° 39.030' N 115° 10.472' W |           |
| Drop Point              | 24    | 47° 46.467' N 115° 06.209' W |           |
| Drop Point              | 25    | 47° 42.515' N 115° 04.775' W |           |
| Drop Point              | 26    | 47° 44.091' N 115° 09.160' W |           |
| Drop Point              | 27    | 47° 39.847' N 115° 06.783' W |           |
| Drop Point              | 29    | 47° 43.855' N 115° 03.121' W |           |
| Drop Point              | 31    | 47° 43.060' N 115° 00.559' W |           |
| Drop Point              | 32    | 47° 43.912' N 115° 01.723' W |           |
| Drop Point              | 33    | 47° 44.790' N 115° 03.241' W |           |
| Drop Point              | 34    | 47° 44.435' N 115° 04.550' W |           |
| Drop Point              | 35    | 47° 47.361' N 115° 06.060' W |           |
| Drop Point              | 36    | 47° 48.979' N 115° 08.786' W |           |
| Drop Point              | 38    | 47° 42.298' N 115° 12.778' W |           |
| Unimproved Landing Area | U4    | 47° 41.298' N 115° 09.587' W |           |



47°45'N

47°45'N

47°40'N

47°40'N

115°10'W

115°5'W