

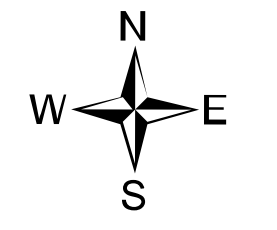
# Ops Map

West Lolo Complex - Thorne  
MT-LNF-000893  
8/20/2021 Day  
38688 acres at 8/17/21 @ 1600



- Check Point
- Helispot
- Unimproved Landing Area
- Division Break
- Drop Point
- Closure
- Staging Area
- Lookout
- Hot Spot - Spot Fire
- Other
- Gate
- Mobile Weather Unit
- Helicopter
- Hazard
- Water Source
- Completed Burnout
- Completed Dozer Line
- Completed Fuel Break
- Completed Hand Line
- Completed Mixed Construction Line
- Completed Road as Line
- Access or Improved Road
- Incident Action Point
- Temporary Flight Restriction
- Fire Edge
- Contained Line
- IR Intense Heat
- IR Scattered Heat
- Wildfire Daily Fire Perimeter
- Fire History
- Research Natural Area

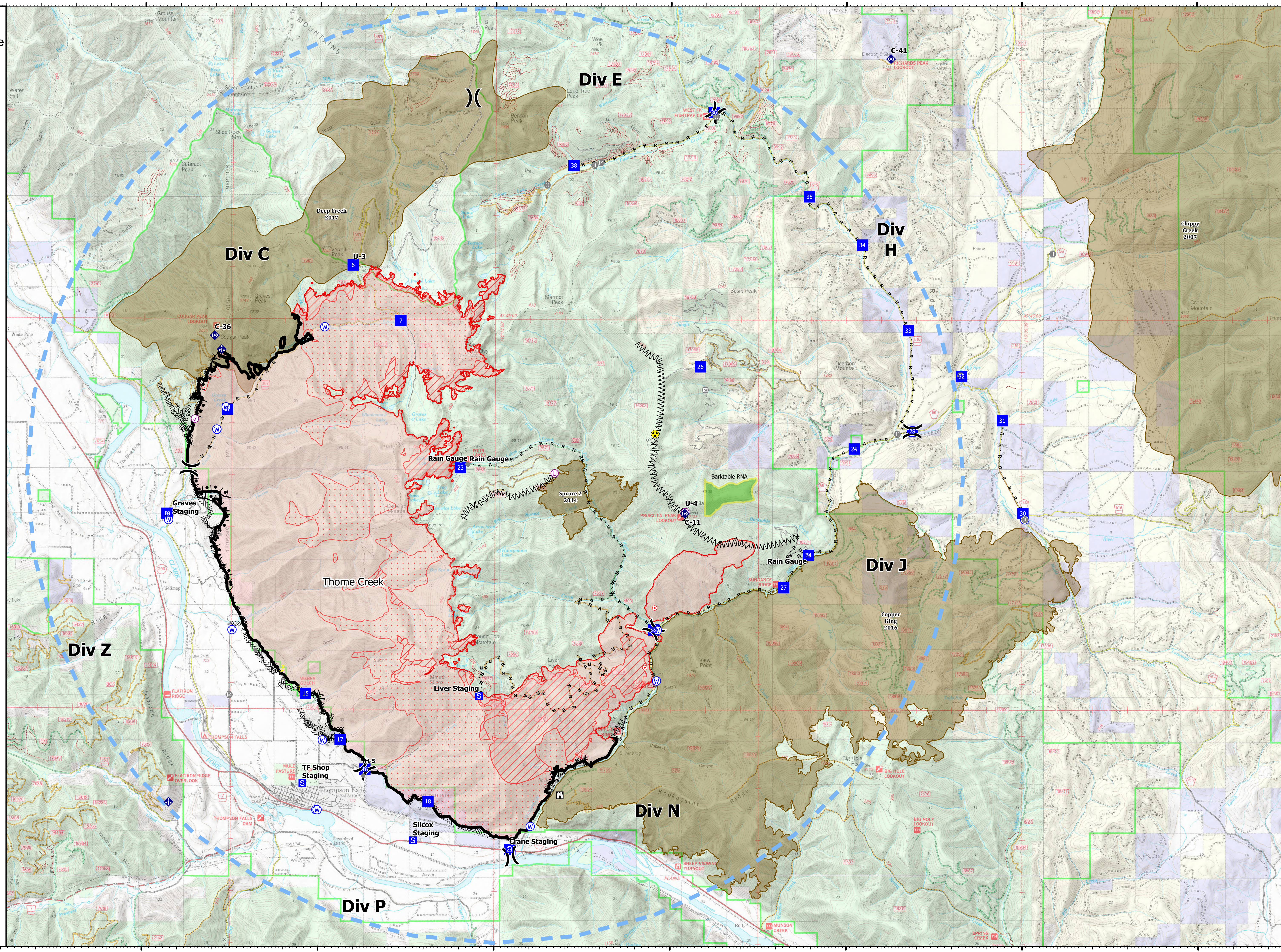
Type	Label	Latitude	Longitude
Water Source		47° 41.137' N 115° 24.288' W	
Water Development or Draft Site		47° 42.859' N 115° 22.925' W	
Water Source		47° 44.839' N 115° 19.867' W	
Water Source		47° 42.855' N 115° 22.925' W	
Water Source		47° 35.247' N 115° 13.972' W	
Water Source		47° 39.021' N 115° 10.373' W	
Water Source		47° 35.556' N 115° 20.064' W	
Water Source		47° 39.009' N 115° 22.471' W	
Water Source		47° 36.895' N 115° 19.888' W	
Water Source		47° 42.798' N 115° 10.404' W	
Water Source		47° 43.290' N 115° 22.667' W	
Water Source		47° 42.862' N 115° 22.930' W	
Check Point		47° 43.061' N 115° 23.554' W	
Water Source		47° 35.554' N 115° 20.059' W	
Water Source		47° 38.949' N 115° 10.394' W	
Unimproved Landing Area		47° 42.035' N 115° 13.307' W	
Water Source		47° 41.155' N 114° 59.923' W	
Drop Point	10	47° 41.239' N 115° 24.335' W	
Drop Point	15	47° 37.789' N 115° 20.369' W	
Drop Point	16	47° 36.338' N 115° 18.675' W	
Drop Point	17	47° 36.905' N 115° 19.383' W	
Drop Point	18	47° 35.722' N 115° 16.879' W	
Drop Point	21	47° 34.801' N 115° 14.549' W	
Drop Point	22	47° 39.030' N 115° 10.472' W	
Drop Point	23	47° 42.141' N 115° 15.984' W	
Drop Point	24	47° 40.469' N 115° 06.079' W	
Drop Point	25	47° 42.515' N 115° 04.775' W	
Drop Point	26	47° 44.991' N 115° 08.790' W	
Drop Point	27	47° 39.847' N 115° 06.783' W	
Drop Point	29	47° 42.855' N 115° 03.121' W	
Drop Point	30	47° 41.276' N 114° 59.979' W	
Drop Point	31	47° 43.860' N 115° 05.559' W	
Drop Point	32	47° 43.912' N 115° 01.723' W	
Drop Point	33	47° 44.790' N 115° 03.241' W	
Drop Point	34	47° 46.435' N 115° 04.550' W	
Drop Point	35	47° 47.361' N 115° 06.060' W	
Drop Point	36	47° 48.979' N 115° 08.790' W	
Drop Point	38	47° 47.954' N 115° 12.778' W	
Drop Point	6	47° 46.028' N 115° 19.064' W	
Drop Point	7	47° 44.961' N 115° 17.699' W	
Drop Point	8	47° 43.246' N 115° 22.622' W	
Helispot	H-5	47° 36.338' N 115° 18.675' W	
Unimproved Landing Area	U-3	47° 46.029' N 115° 19.064' W	
Unimproved Landing Area	U-4	47° 41.288' N 115° 09.587' W	



0 1 2 Miles

Created by: SA Gold Team  
8/19/2021 2157

North American 1983 Datum, Lat/Long Grid



47°40'N

47°45'N

47°50'N

47°40'N

47°45'N

47°50'N

115°30'W

115°25'W

115°20'W

115°15'W

115°10'W

115°5'W

115°W

114°55'W