

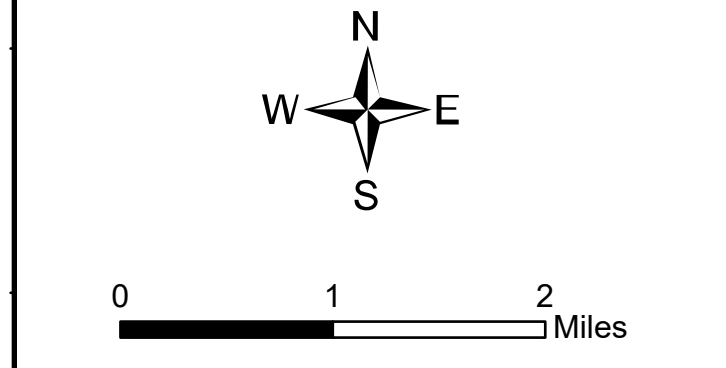
Ops Map

West Lolo Complex - Thorne
 MT-LNF-000893
 8/22/2021 Day
 38688 acres at 8/17/21 @ 1600
 24% contained

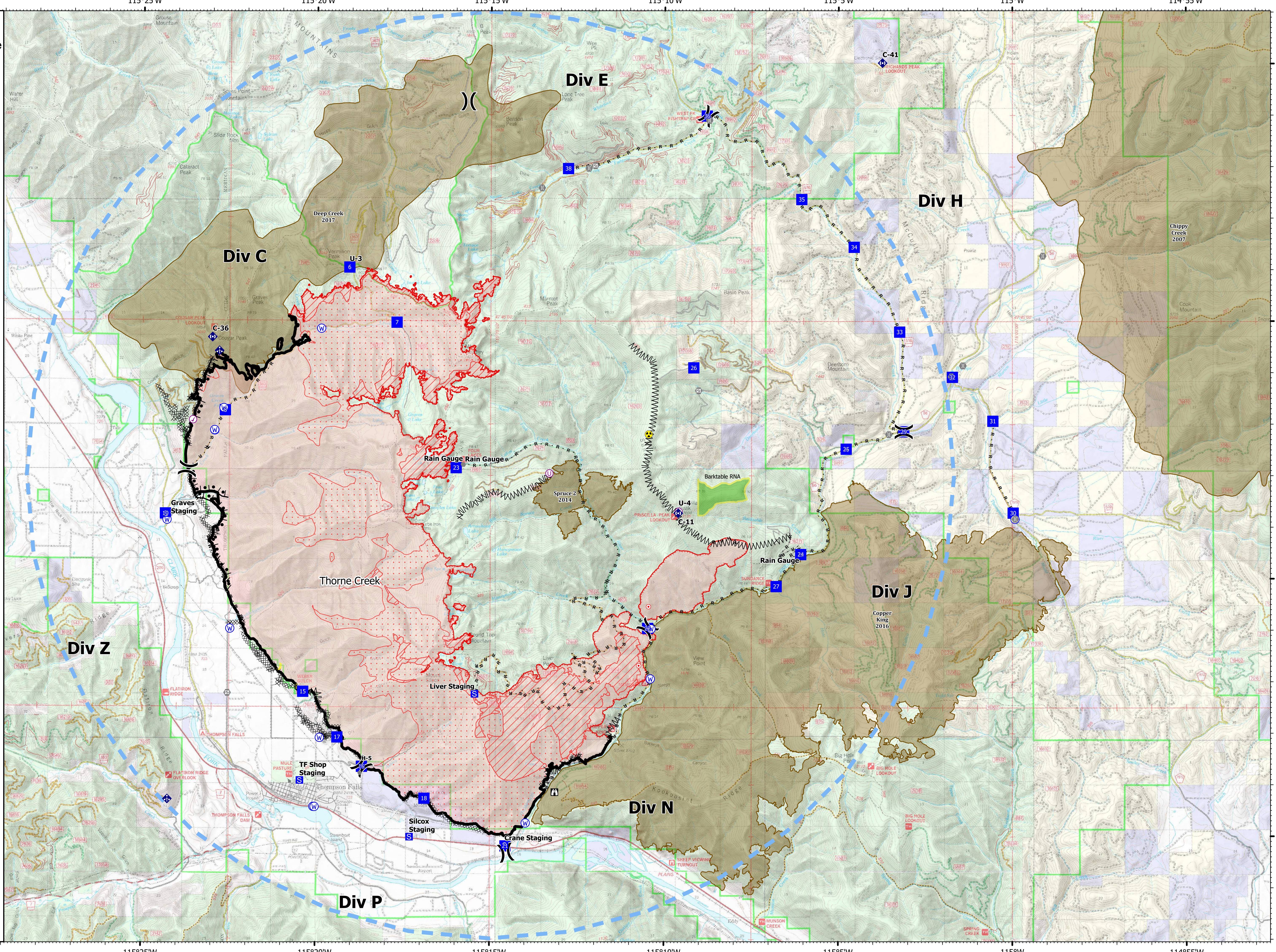


- Check Point
- Helispot
- Unimproved Landing Area
- ⌋ Division Break
- Drop Point
- ⊠ Closure
- ⊠ Staging Area
- ⊠ Lookout
- Hot Spot - Spot Fire
- Other
- Gate
- Bridge
- ⊠ Mobile Weather Unit
- ⊠ Repeater
- ⊠ Hazard
- ⊠ Water Source
- ⊠ Completed Burnout
- ⊠ Completed Dozer Line
- ⊠ Completed Fuel Break
- ⊠ Completed Hand Line
- ⊠ Completed Mixed Construction Line
- ⊠ Completed Road as Line
- ⊠ Access or Improved Road
- ⊠ Incident Action Point
- ⊠ Temporary Flight Restriction
- ⊠ Fire Edge
- ⊠ Contained Line
- ⊠ IR Intense Heat
- ⊠ IR Scattered Heat
- ⊠ Wildfire Daily Fire Perimeter
- ⊠ Fire History

Type	Label	Latitude	Longitude
Water Source		47° 41.117' N 115° 24.288' W	
Water Development or Draft Site		47° 42.859' N 115° 22.925' W	
Water Source		47° 44.839' N 115° 19.867' W	
Water Source		47° 42.855' N 115° 22.925' W	
Water Source		47° 35.247' N 115° 13.972' W	
Water Source		47° 39.021' N 115° 10.372' W	
Water Source		47° 35.556' N 115° 20.064' W	
Water Source		47° 39.009' N 115° 22.471' W	
Water Source		47° 36.895' N 115° 19.888' W	
Water Source		47° 42.781' N 115° 10.449' W	
Water Source		47° 43.200' N 115° 22.667' W	
Water Source		47° 42.862' N 115° 22.930' W	
Check Point		47° 43.061' N 115° 23.554' W	
Water Source		47° 35.544' N 115° 20.029' W	
Water Source		47° 38.049' N 115° 10.394' W	
Unimproved Landing Area		47° 42.035' N 115° 13.307' W	
Water Source		47° 41.155' N 114° 59.923' W	
Drop Point	10	47° 41.239' N 115° 24.335' W	
Drop Point	15	47° 37.789' N 115° 20.369' W	
Drop Point	16	47° 36.338' N 115° 18.675' W	
Drop Point	17	47° 36.905' N 115° 19.383' W	
Drop Point	18	47° 35.722' N 115° 16.879' W	
Drop Point	21	47° 34.802' N 115° 14.549' W	
Drop Point	22	47° 39.030' N 115° 10.472' W	
Drop Point	23	47° 42.141' N 115° 15.984' W	
Drop Point	24	47° 40.469' N 115° 06.079' W	
Drop Point	25	47° 42.515' N 115° 04.775' W	
Drop Point	26	47° 44.921' N 115° 09.166' W	
Drop Point	27	47° 39.847' N 115° 06.783' W	
Drop Point	29	47° 42.855' N 115° 03.121' W	
Drop Point	30	47° 41.276' N 114° 59.975' W	
Drop Point	31	47° 43.668' N 115° 00.559' W	
Drop Point	32	47° 43.912' N 115° 01.723' W	
Drop Point	33	47° 44.790' N 115° 03.241' W	
Drop Point	34	47° 46.435' N 115° 04.550' W	
Drop Point	35	47° 47.361' N 115° 06.060' W	
Drop Point	36	47° 46.978' N 115° 08.796' W	
Drop Point	38	47° 47.954' N 115° 12.778' W	
Drop Point	6	47° 46.028' N 115° 19.064' W	
Drop Point	7	47° 44.961' N 115° 17.699' W	
Drop Point	8	47° 42.948' N 115° 22.627' W	
Helispot	H-5	47° 36.338' N 115° 18.675' W	
Unimproved Landing Area	U-3	47° 46.029' N 115° 19.064' W	
Unimproved Landing Area	U-4	47° 41.298' N 115° 09.587' W	



8/21/2021 2031
 North American 1983 Datum, Lat/Long Grid



115°30'W 115°25'W 115°20'W 115°15'W 115°10'W 115°5'W 115°W 114°55'W

47°50'N 47°45'N 47°40'N 47°35'N