

Incident Action Plan

WEST LOLO COMPLEX

MT-LNF-000893

P1N5AN 0116

GRANITE PASS COMPLEX

MT-LNF-000962

P1N5N5 0116

Saturday July 31, 2021

Operational Period

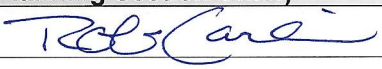
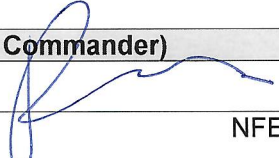
Day 0530 to 2200

NRT1 Incident Site
Information



[https://sites.google.com/view/
nrt1-incident-webpage/home](https://sites.google.com/view/nrt1-incident-webpage/home)

IAP Password: westlolo2021

INCIDENT OBJECTIVES	1. Incident Name West Lolo and Granite Pass Complexes	2. Date Prepared 7/30/2021	3. Time Prepared 1630
	4. Operational Period		
Saturday, July 31, 2021 DAY SHIFT 0530 - 2200			
5. Leader's Intent			
<ul style="list-style-type: none"> Protect the identified values at risk utilizing suppression strategies identified by Agency Administrators in alignment with their prioritization of specific values. Risk management tools will be used to evaluate tactics in order to provide for firefighter and public safety while implementing actions that have a high probability of success. The highest priority on this incident is to protect the safety of fire personnel and to protect human life followed by the protection of structures. Ensure LCES is known and understood by everyone, and contingencies and trigger points for disengagement are developed and followed. Maintain a positive and inclusive workplace where all employees are valued and treated with respect. 			
6. Incident Objectives			
<ul style="list-style-type: none"> Address the safety of firefighters, aviation and public through clear communication. Ensure an understanding of strategies and tactics, including a clearly defined and obtainable end state, in order to facilitate sound risk mitigation decision making. Infrastructure Values at Risk: Minimize fire threat and impacts to local communities, the Ashley Creek Municipal water supply, highway corridors, recreation improvements, commercial timberlands, BPA and rural electric transmission lines, Phillips 66 facilities, communication sites, businesses, private property, and private structures. This will be achieved by coordinating suppression actions with cooperators responsible for structure protection, implementing indirect primary and contingency lines and strategic aerial ignition operations. Natural and Cultural Resource Values at Risk: Weigh potential suppression actions in consideration of heritage resources, waterways and riparian areas, and bull trout and anadromous fish habitat in order to minimize fire effects and undesirable suppression related effects to these values. Continue to develop and implement the long-term plan for fires in the two complexes that incorporate management actions in alignment with the protection of identified values, based on current and expected weather and fire behavior. The long-term plan will incorporate primary, alternate, contingency, and emergency plans identifying opportunities for both direct and indirect suppression actions. Maintain and strengthen relationships with the Lolo National Forest; Nez Perce – Clearwater National Forest; MT DNRC; Sanders, Missoula, Clearwater, and Idaho County Sheriffs, Emergency Managers, and VFD's; Confederated Salish and Kootenai, and Nez Perce Tribes; community leaders; cooperators; local government and agencies; and private landowners utilizing the most effective platforms available. Provide timely, accurate, and consistent incident information through the press, community meetings, trap lines, briefings and social media. Incident information shall be coordinated between the team and the Forest Service Line Officers, MT DNRC Unit Manager, and the Sanders, Missoula, Clearwater, and Idaho County Sheriff Offices. Continue to monitor costs and implement cost effective methods for accomplishing operational objectives. Ensure adherence to current guidance regarding COVID-19 to provide for the health and safety of all incident personnel by implementing the module-of-one concept, social distancing, and masking up as appropriate. 			
7. Attachments (X – if attached)			
<input checked="" type="checkbox"/> Organization List - ICS 203 <input checked="" type="checkbox"/> Medical Plan - ICS 206 [] _____ <input checked="" type="checkbox"/> Division Assignment Lists - ICS 204 <input checked="" type="checkbox"/> Unit Log 214 [] _____ <input checked="" type="checkbox"/> WF206 8 Line [] _____			
8. Prepared By (Planning Section Chief)		9. Approved By (Incident Commander)	
Rob Carlin PSC1  ICS 202		Michael Goicoechea IC  NFES 1326	

ORGANIZATION ASSIGNMENT LIST				Operations Section	
1. Incident Name		West Lolo Complex		Field Operations	Scott Schrenk 406-250-0354
2. Date Prepared	7/30/2021	3. Time Prepared	1800	Planning Operations	Andy James 405-823-6742
4. Operational Period				Strategic Operations	
Saturday 7/31/2021 Day 0530-2200				Branch Granite	Justin Kaber 406-250-1455
Incident Commander and Staff				Branch Thorne	
Incident Commander	Michael Goicoechea / Drew Daily (t)			Structure Protection Specialist	Hunter Seaborn Bell, III 406-670-5633
Deputy				Branch Granite	
Safety Officer	Tony Petrilli 406-370-5996 Steve Heppner / Troy Phelps (t)			Division Alpha	Robert Vick Jesse Searles (t)
Information Officer	Jeannette Smith 406-5440131 Anna Bateson (t) / Mark Vosburgh (t)			Division Lima	Stryker Clark Jake Fallis (t)
Liaison Officer	Rob Taylor 406-544-4679 Kay Jaquith 406-531-9123			Division Contingency / Structure	Jon Norman Tasha Shields (t)
Agency Representative				Branch Thorne	
LNF AA	Cheryl Probert, Carolyn Upton (t)			Division Charlie	Dan Helterline
LNF AREP	Eric Tomasik			Division Echo / Juliet	Nou Yang 406-370-9319
READ	Ann Hadlow Mike Mueller 406-499-6925 Eric Vanderbeek, Chris Richardson			Division November	Kate Airhart 406-360-0506 Ryan Jahn (t) 812-583-7598
IBA	Jaci Stimach 816-518-0290 / Erin Lally (t)			Division Zulu	Tate Cavill 406-396-0255
Planning Section				Staging	
Section Chief	Robin Jermyn 406-360-5936 / Rob Carlin			Helterline	
Situation Unit	Derek Trautvein 307-431-8598			Air Operations Branch	
Demobilization Unit	Tanya Murphy 720-441-8211			Air Operations Branch Director	John Mckee 406-370-7028 Dennis Morton 406-660-2318
Resources Unit Leader	Anya Moline 406-366-1979 Laura Strong 406-499-1306			Air Support Group Supervisor	Albert Faria (t) 907-419-5415
Status Check-in	Brittney Allestad (t)			Air Tactical Group Supervisor	Ken Wabaunsee 406-360-4902
Fire Behavior Analyst	Brian Anderson 406-660-0450 David Greathouse			Finance Section	
Long-Term Analyst	LaWen Hollingsworth 406-552-5440 Chuck McHugh			Section Chief	Amy Schrenk 406-830-5214
Meteorologist	Bob Hoenisch 406-239-4164 Brooke Taber - Granite			Time Unit	Marta Lujan 720-219-4538
GIS Specialist	Morgan Voss 541-951-2521 / Erin Heiselmann Tim Eichner			Equipment Time	Lynda Pike 720-818-2565
Air Quality Specialist	Jenny Perth			Personnel Time	Tama Lester 580-212-1017 / Kara Altmiller (t)
Computer Specialist	Tim McCracken 406-407-3152 Bob Eck 406 249-8391 John Michael Vaisa			Cost Unit	Khon Viengkham 703-217-7269 Kevin Sweeney
Human Resource	Debby Hassel 406-304-6111			Procurement Unit Leader	Dana Bangart 406-360-0029
Documentation	Kelly Altmiller (t) 406-531-4247			Comps / Claims	Leon Augustine 406-363-8956 / Shannon Maxwell
Logistics Section				Prepared by:	
Section Chief	Charles Showers 406-531-3691 - Granite Jim Evanoff 406-223-8660 Roylene Gaul 406-381-6888 - Virtual			Anya Moline - RESL	
Ordering Manager	Rita Lind 406-291-3012 Kristen Troop 406-381-3688 -Granite				
Supply Unit	Josh King 406-855-0984 Brent Elmore 605-641-0771 - Granite				
Facilities Unit	Matt LaTray 406-865-0452 Kasey Craft (t) 406-261-9261				
Base Camp					
Ground Support Unit	Joe Emberson 580-317-5314 - Granite Aidan McCormick (t) 239-784-9647				
Communications Unit	Dustin Sene 720-428-0546 Trent Coppinger 406-581-9027 - Granite				
Medical Unit	Levi Clymer 417-658-5155				
Food Unit	Russell Danielson 208-755-4068 - Granite Steve Otterness 303-660-9810				
Security Manager	Kyle Green (t) 520-235-3848				
National Guard					
Equipment Manager	Keely Benson (t) 406-546-2702				

West Lolo Complex

DAILY SAFETY MESSAGE:

Incident Transition

- **Know who you are working for and who is working for you.**
- **If you don't know or are unsure... ASK!**
- **Establish and Ensure Proper Communications / Briefings.**
- **Review Current Plans, Tactics and Strategies.**
- **Review and Discuss Medical Plan.**
- **Ensure Radios are programmed correctly.**
- **Take your time. Scope it out and size it up.**

West Lolo Complex Safety Team



**“Remember to Use Good Risk Management, Think About the Big Picture, and Work as a Team”
~ Steve Heppner, SOF1 NRIMT1**



WEST LOLO COMPLEX Weather Forecast



FORECAST NO:	21	NAME OF FIRE:	Thorne Creek
PREDICTION FOR:	Day Shift	UNIT:	MT-LNF
SHIFT DATE:	Saturday, July 31, 2021	SIGNED:	Bob Hoenisch
FORECAST ISSUED:	1900 hrs July 30, 2021		Incident Meteorologist

WEATHER DISCUSSION:

High pressure centered over the region will bring one more day of very hot and dry conditions before moisture moves into the region from the south later tonight through Sunday. Daytime temperatures will likely reach the low 100s again from Thompson Falls to Plains with all areas seeing low humidity in the teens this afternoon after only poor recovery this morning. General winds from the east will affect ridgetops initially and eventually the valleys by this afternoon with a few gusts up to 20 mph this afternoon on ridges. Clouds will gradually increase late this afternoon and evening as monsoon related moisture moves north into the area with a few showers possible by Sunday morning. Additional moisture will bring more clouds and noticeably higher humidity Sunday along with an increasing chance for showers and thunderstorms late Sunday into Sunday night.

WEATHER FORECAST FOR TODAY:

SKY/WEATHER: Mostly sunny but smoky. Very hot and dry. Inversion lifts 1300-1400, although smoke could delay lifting of the inversion; reduced visibilities are likely in the valleys and drainages until inversion lifts.

Max Temperature: 86-91° upper slopes and ridgetops; 92-97° lower slopes to around 102 at Thompson Falls and ICP.

Min RH: 15-20% upper slopes and ridgetops. 12-18% lower slopes and along the Clark Fork.

LAL: 1 **CWR:** 0

20 FT WINDS:

RIDGETOP – East winds 5 to 10 mph, increasing to 8-12 mph with gusts to 20 mph in the afternoon.

SLOPE/VALLEY – Light winds becoming East 5 to 10 mph, with afternoon gusts to 15 mph.

HAINES INDEX: 4 (Low)

TONIGHT:

SKY/WEATHER: Increasing clouds with a slight chance of showers after midnight.

Min Temperature: 64-69° on slopes and ridgetops; 58-63° at ICP and Thompson Falls.

Max RH: 40-45% on mid-slopes and ridgetops; 60-70% at ICP and valleys.

LAL: 1 **CWR:** 0

20 FT WINDS:

RIDGETOP – East winds 6 to 12 mph with gusts to 15 mph.

SLOPE/VALLEY – East winds 5-10 mph, becoming downslope/downvalley 3 to 6 mph after 2000.

OUTLOOK FOR SUNDAY:

Mostly cloudy with improved humidity. Increasing chance of showers and possible thunderstorms Sunday afternoon and evening. Maximum temperature 75-80° upper slopes and ridgetops; 81-89° lower slopes and valleys. Minimum humidity 24-31%. Southeast wind 6-12 mph with gusts to 18 mph, becoming South in the afternoon.

FIRE BEHAVIOR FORECAST

FORECAST NUMBER: #15

TYPE OF FIRE: Wildland Fire

FIRE NAME: West Lolo Complex

OPERATIONAL PERIOD: Day 07/31/2021

DATE ISSUED: 07/30/2021

TIME ISSUED: 2000 hrs

UNIT: MT-LNF-000893

SIGNED: *Brian Anderson*

WEATHER

A change in wind direction
See Fire Weather Forecast for Details

FUELS

ERC values across all RAWs on the West Lolo Complex are near 97th Percentile.

The fire area is a mix of subalpine forest types at high elevations with relatively high surface fuel loading, lodgepole mix at mid elevations, and Douglas-fir and ponderosa pine at low elevations. Southerly slopes are dominated by Douglas-fir while northerly slopes are dominated by spruce-fir and some lodgepole.

Cougar Lookout RAWs: 163.350 Tx/Rx (DTMF code 0035)

FIRE BEHAVIOR

Critical Thresholds: When local conditions exceed the following thresholds, expect a transition to active fire behavior where group torching, short crown runs, and short-range spotting (approx. ¼ mile) are likely to occur.

- Overnight humidity recovery at the Cougar Lookout RAWs <25%
- Sustained 20-foot winds of 20 mph (or about 10 mph eye-level winds)
- Haines index of 5 or 6

Thorne: With similar weather conditions as yesterday, except for wind direction, expect similar fire behavior. In Graves creek north of the DIVS C/Z break, watch for fire to continue backing down the hill. Small uphill runs are possible due to rollout. Winds in this area are likely to be a little squirrely due to terrain influences, however, spread direction is generally to the west. In Squaw creek, the large patch of unburned fuel will likely continue burning especially on those slopes with a slight westerly or southerly aspect. East winds will push fire to the west, but with a similar terrain influences those winds should be somewhat squirrely as well.

AIR OPERATIONS


Smoke is likely thick again today and may impede aviation operations temporarily.

SAFETY

Take it step by step, we are still approaching the peak of the fire season, soon enough we will be able to say we made it to August

DIVISION ASSIGNMENT LIST			Branch		Division/Group				
Incident Name			Thorne		Zulu				
West Lolo Complex			Operational Period						
			Date: 7/31/2021		Time: 0530-2200				
Operations Personnel									
Operations Chief	Scott Schrenk / Andy James		Branch Director						
Safety Officer	Troy Phelps / Brad Wagner		Division/Group Supervisor		Tate Cavill 406-396-0255				
Resources Assigned This Period									
Strike Team/Task Force/ Resource Designator	Req#	Last Shift	Leader	# Persons	Drop Off Point /Time	Pick Up Point / Time			
Trapper Creek T2IA**			Craig McDonald	20	0530 ICP	2200 ICP			
Florida T2IA**				20	0530 ICP	2200 ICP			
HC2 R&R Contracting	C-25	8/10	Jamie Lopez	20	0530 ICP	2200 ICP			
TFLD*	--	8/13	Cody Jermyn	1	0530 ICP	2200 ICP			
FMOD Miller Creek	O-32	7/31	Pete Clifford	2	0530 ICP	2200 ICP			
SKG1 Bigfoot	E-39	8/9	Kurt Spencer	1	0530 ICP	2200 ICP			
PTF Mod*	--	8/2	Jessica Thompson	5	0530 ICP	2200 ICP			
Darby Mod.*	O-9002	8/5	Evan Burke	4	0530 ICP	2200 ICP			
ENG6 Hart Ventures	E-126	8/3	Dennis Gates	3	0530 ICP	2200 ICP			
ENG6 AZ 1935	E-128	8/8	Colin Port	3	0530 ICP	2200 ICP			
ENG6 Utah BR 11	E-142	8/11	Robert Denning	4	0530 ICP	2200 ICP			
DOZ3 Traver's Dozer	E-55	8/5	Jerry Dixon	1	0530 ICP	2200 ICP			
WTS2 Ivanoff Contracting	E-79	8/12	Brad J. Ivanoff	1	0530 ICP	2200 ICP			
WTS2 A-1 Fire Service	E-2	8/4	Scott Fry	1	0530 ICP	2200 ICP			
WTS2 Green Team Fire	E-147	8/12	Jocko Henderson	3	0530 ICP	2200 ICP			
SOFR	O-322	8/12	Matt Martin	1	0530 ICP	2200 ICP			
REMS 1	O-63	8/2	Ray Storm	7	0530 ICP	2200 ICP			
Work Assignments									
<p>Task: Be prepared to receive, hold and coordinate aerial ignition as directed by Operations. Utilize resources and hoselays to begin securing the fires edge after firing operations are completed along the indirect fireline. Request aircraft as needed for bucket work and retardant use. Ensure coordination with private inholdings as suppression activities take place.</p> <p>Purpose: To have control features in place that have the highest probability of success for incident resources. Maintain positive relationships with private landowners and cooperators during suppression operations.</p>									
End State									
The fire is contained at the established control features with minimal impacts to private property, natural resources and values at risk. Local relationships are strengthened through timely communication, cooperation and coordination.									
Special Instructions									
Be bear aware. Backhaul all trash and dispose of it properly.									
*Denotes a local resource									
**Denotes a lend lease									
Division/Group Communication Summary									
Function	Channel	Freq RX	Tone RX	Freq TX	Tone RX	Function	Channel	Freq RX	Freq TX
CMD 36	9	171.0625	136.5	163.8250	136.5	A/G Pri	11	167.9000	167.9000
TAC 4	4	166.7250	136.5	166.7250	136.5	A/G Sec			
Prepared by Anya Moline	Approved By Robin Jermyn PSC				Date 7/30/2021		Time 18:00		

AIR OPERATIONS SUMMARY 220		Prepared By: Albert Faria	Prepared: 07/30/21	Prepared Time: 19:30 hrs.	
1. INCIDENT NAME: WEST LOLO COMPLEX	2. OPERATIONAL PERIOD 07/31/21	START TIME: 0700	END TIME: 2100	SUNRISE: 6:17	SUNSET: 21:18

3. REMARKS (Safety Notes, Hazards, Air Operations Special Equipment, etc.). Monitor 118.6750 (Thorne TFR) when operating in or near the area from Plains to the Thorne Fire!! Plains Helibase will also monitor this frequency. <u>Multiple Incidents are active in and adjacent to the West Lolo Complex.</u> <u>DO NOT be pressured into accepting a mission that you know, or feel is unsafe!</u>	4. READY ALERT AIRCRAFT: Not assigned Air Ambulance: Life Flight - Missoula Order through Communications Tan 155.3400 (Tx 156.7) See Medical Plan in the IAP	5. TFRs: West Lolo Cmplx Thorne: 1/3680 118.6750, 10,500' MSL Northern Rockies TFR Map 
---	--	--

6. PERSONNEL	NAME	PHONE #	7. FREQUENCIES	AM	FM	8. FIXED-WING Avail/ Type/ Make-Model/ N#/ Base
AOBD	Dennis Morton	406-660-2318	A/A Thorne (TFR)	118.6750		AIRTANKERS: ORDER THRU ATGS OR AIR OPS
ASGS(t)	Albert Faria	907-419-5415	Secondary A/A	118.225		
HEBM	Charles Barclay	703-447-1231	Primary A/G		167.900	PLAINS RETARDANT BASE RAMP FREQ: 123.975
			Secondary A/G		168.2875	
ATGS	Ken Wabaunsee	406-360-4902	Rotor	124.500		ATGS Platforms: 1SK Wabaunsee Aero commander 680V (Not assigned)
			Plains CTAF	122.900		
			Missoula Flight Follow		166.500 (127.3 Tx/Rx)	Email daily Helicopter costs to: westlolohelibase@gmail.com
Plains Helibase		720-326-2773	Tan		155.3400 (156.7 Tx)	All others to: 2021.westlolo.finance@firenet.gov
Missoula Aircraft		406-829-7060	Air Guard		168.6250 (110.9 Tx)	West Lolo Charge code: MT-LNF-000893 P1N5AN (0116)


9. HELICOPTERS

FAA N#	TY	MAKE/ MODEL	BASE	START	AVAIL	REMARKS	FAA N#	TY	MAKE/ MODEL	BASE	START	AVAIL	REMARKS
N46HX	3L	BHT 407	Plains	0800	0830	Aerial Ignition							
N96EC	2L	Bell UH1H	Plains	0800	0830	Tanked							
N17FH	1L	UH-60A	Plains	0800	0830	Buckets							
N181MA	3	Bell 407	Plains	0800	0830	Forest/District IA							

10. TASK/ MISSION/ ASSIGNMENT (Type/ function includes: Air Tactical, Retardant, Recon, Personnel Transport, Bucket Operations, SAR, etc.)					
TYPE/FUNCTION	PRIORITY	NAME OF PERSONNEL OR CARGO (If applicable) or instructions for tactical aircraft	MISSION START	FLY FROM	FLY TO
Buckets	1		As requested	Helibase	Fire
Slings	2		As requested	Helibase	Fire
ReconPSD	3		As requested	Helibase	Fire

Fires	Helibase, Dip Sites, Pick Up Sites, etc.
Thorne: N 47° 42.137' X W 115° 18.384'	Plains Helibase(S34): N 47° 28.51' X W 114° 53.96' Elevation: 2470'
	For a complete list see Ops Map:

Other Assigned Support Equipment

<p><u>REMINDER!!</u> A flight risk assessment (GAR) needs to be completed prior to daily missions</p> <p>Region 1 CWN Helicopter GAR</p>		Helibase Trailer Plains	E-81	
		Hotsy	S-27	
		Water Tender	E-122	

Wind Restrictions

Flights above ground level	Flight Permitted in Winds Less than / Maximum Gust Spread		
	Type 1 Helicopters	Type 2 Helicopters	Type 3 Helicopters
More than 500' AGL	<50kts / Gusts: N/A	<50kts / Gusts: N/A	<50kts / Gusts: N/A
Less than 500' AGL	<40kts / Max Gust Spread: 15kts	<40 kts / Max Gust Spread: 15kts	<30kts / Max Gust Spread: 15kts

INCIDENT RADIO COMMUNICATIONS PLAN			Incident Name WEST LOLO COMPLEX			Date/Time Prepared 7/30/21			Operational Period Date/Time 7/31/21 0530 - 8/1/21 0800		
Ch #	Function	Channel Name/Trunked Radio System Talkgroup	Assignment	RX Freq	N or W	RX Tone/NAC	TX Freq	N or W	Tx Tone/NAC	Mode A, D or M	Remarks
1	TACTICAL CHNL	TAC 1	W LOLO FIRE	168.0500		136.5	168.0500		136.5	A	NIGHT
2	TACTICAL CHNL	TAC 2	W LOLO FIRE	168.2000		136.5	168.2000		136.5	A	STAGING
3	TACTICAL CHNL	TAC 3	W LOLO FIRE	168.6000		136.5	168.6000		136.5	A	THORNE ECHOE / JULIET
4	TACTICAL CHNL	TAC 4	W LOLO FIRE	166.7250		136.5	166.7250		136.5	A	THORNE ZULU
5	TACTICAL CHNL	TAC 5	W LOLO FIRE	166.7750		136.5	166.7750		136.5	A	THORNE NOVEMBER
6	TACTICAL CHNL	TAC 6	W LOLO FIRE	168.2500		136.5	168.2500		136.5	A	THORNE CHARLIE
7	NIFC CMD RPT	CMD 4	W LOLO FIRE	170.0000		136.5	166.6750		136.5	A	EDDY PEAK / THORNE RPT
8	NIFC CMD RPT	CMD 11	W LOLO FIRE	170.6875		136.5	166.5750		136.5	A	PRISCILLA PEAK / THORNE
9	NIFC CMD RPT	C 36	W LOLO FIRE	171.0625		136.5	163.8250		136.5	A	COUGAR PEAK / THORNE
10	UNASSIGNED	C 41	W LOLO FIRE	171.8375		136.5	165.3875		136.5	A	RICHARDS PEAK / THORNE
11	AIR/GND PRI	A/G PRI	W LOLO FIRE	167.9000			167.9000			A	AIR/GROUND PRIMARY
12	A/GND SEC	A/G SEC	W LOLO FIRE	168.2875			168.2875			A	DEEP LOOKOUT DIV
13	FS REPEATER	EDDY		172.3875		\$F7E	164.1750		\$526	D	LINKED TO MSO DISPATCH
14	RED	MUTUAL AID		154.0700			154.0700		156.7	A	MUTUAL AID
15	TAN	VMED 28		155.3400			155.3400		156.7	A	MED A/G PRI
16	AIR GUARD	AIR GUARD		168.6250			168.6250		110.9	A	AIR GUARD
Prepared by (Communications Unit) W LOLO COMMUNICATIONS 720-428-0546 / COML SENE 406-581-9816						Incident Location LOLO NF, CONTROLLED UNCLASSIFIED INFORMATION//BASIC County State MT Latitude N Longitude 3-7-77 W					

The convention calls for frequency lists to show four digits after the decimal place, followed by either an "N" or a "W", depending on whether the frequency is narrow or wide band. Mode refers to either "A" or "D" indicating analog or digital (e.g. Project 25) or "M" indicating mixed mode. All channels are shown as if programmed in a control station, mobile or portable radio. Repeater and base stations must be programmed with the Rx and Tx reversed.

1. Incident/Project Name				2. Operational Period						
West Lolo Complex				Date/Time 07/31/2021						
3. Ambulance Services										
Ambulance		Complete Address			Phone & EMS Frequency	Advanced Life Support (ALS) Yes No				
Plains Community Ambulance		10 Kruger Rd. Plains, MT 59859			911/ MIDC	NO				
Thompson Falls Ambulance		Thompson Falls, MT 59873			911/ MIDC	NO				
4. Air Ambulance Services										
Name		Phone		Type of Aircraft & Capability						
Life Flight Network		911 or thru MIDC		Paramedics/Flight Nurse						
Two Bear Air		Flathead (406)-758-5610		Hoist capable, SAR, Paramedics, Flight nurses						
5. Hospitals										
Name Complete Address		GPS Datum – WGS 84 Coordinate Standard Degrees Decimal Minutes DD° MM.MMM' N - Lat DD° MM.MMM' W - Long		Travel Time Air Gnd		Phone		Helipad Yes No	Level of Care Facility	
Clark Fork Valley Hospital, 10 Kruger Road, Plains, MT 59859		Lat: 47 28.145		min	min	406-826-4800 for Heli Pad (406) 829-4875		<input checked="" type="checkbox"/>	<input type="checkbox"/>	Limited – CTF
		Long: -114 53.333								
		UHF: 155.280 Tone Tx 156.7								
St. Patrick's Hospital 500 West Broadway Missoula, MT		Lat: 46 52.528		min	hr	(406) 543-7271 for Heli Pad (406) 329-2620		<input checked="" type="checkbox"/>	<input type="checkbox"/>	Level 2 – RTC
		Long: -113 59.984								
		UHF: 155.280 Tone Tx 156.7								
Deaconess Hospital 800 W 5 th Ave, Spokane, WA 99204		Lat: 47 39.099		min	hr	509-458-5800		<input checked="" type="checkbox"/>	<input type="checkbox"/>	Level 3
		Long: -117 25.468								
		VHF:								
Mineral County Hospital 1208 6 th Ave. E, Superior, MT 59872		Lat: 47 11.135		hr	hr	406-822-4841 For all calls		<input checked="" type="checkbox"/>	<input type="checkbox"/>	Limited – CTH
		Long: -114 52.648								
		UHF: 155.280 Tone Tx 156.7								
6. Division Branch Group			Area Location Capability							
Plains ICP			EMS Responders & Capability:		Local 911 Response MEDL Levi Clymer					
DIV THORNE C/Z/J/E (Day)			EMS Responders		REMS1 -Ray Storm LEAD; Mark Swick EMPF; Rick Bostain EMPF; Matt Fox AEMF; Devon Pulvino EMPF, Ian Nelson EMPF					
			Medical Emergency Channel		Command 36 (Z/N), 11 (J/E)					
DIV THORNE N (DAY)			EMS Responders		EMTF Sam Capeloto					
			Medical Emergency Channel		Command 36, (Z/N), 11 (J/E)					
DIV THORNE Z/N/J/E (Swing)			EMS Responders		AEMF Kieth Szudarski,					
			Medical Emergency Channel		Command 36, (Z/N), 11 (J/E)					

7. Name & Location		Remote Camp Location(s)			
8. Prepared By (Medical Unit Leader)		9. Date/Time	10. Reviewed By (Safety Officer)		11. Date/Time
Levi Clymer, MEDL		07/30/21	Brad Wagner SOF1 Troy Phelps SOF1(t)		7/30/21



INCIDENT Weather Forecast



FORECAST NO: 11
PREDICTION FOR: Sat-Sat Night
SHIFT DATE: July 31, 2021
FORECAST ISSUED: 1900 July 30, 2021

NAME OF FIRE: Granite Pass Complex
UNIT: MT-LNF-000962
SIGNED: Brooke Taber
Incident Meteorologist

WEATHER DISCUSSION: Another very warm and mostly dry day is expected across the Granite Pass Complex. Clouds will increase after 1300 with widely scattered showers and thunderstorms possible. A mix of wet and dry convection is possible, with limited areal coverage. A few stronger cores will be capable of brief rainfall and gusty outflow winds. Temperatures will warm into the mid 80s to near 90 again, with critically low relative humidity values. An easterly shift in ridgetop winds are expected with localized gusts 12 to 18 mph possible after 1400.

TODAY:

WEATHER: Increasing clouds after 1300, with widely scattered showers and thunderstorms possible. Areas of smoke.

MAX TEMP:	3500 feet: 86-91°	MIN RH:	3500 feet: 21-26%
	Ridgetop: 81-86°		Ridgetop: 24-30%

CHC WTG RAIN: 10%	Haines Index: 4
--------------------------	------------------------

WINDS: **3500 feet:** Downvalley/downslope 2 to 4 mph, becoming east 5 to 10 mph gusts up to 15 mph after 1400.
(20 FEET) **Ridgetop:** East winds 8 to 12 mph with gusts 12 to 18 mph possible after 1200.

MIXING HEIGHT: Rising to 9000 feet by 1400.

VISIBILITY: 3 to 5 miles, localized lower in the deeper valleys, improving 6 to 8 miles after 1200.

TONIGHT:

WEATHER: Partly cloudy with isolated showers and thunderstorms possible. Areas of smoke.

MIN TEMP:	3500 feet: 58-63°	MAX RH:	3500 feet: 54-59%
	Ridgetop: 59-64°		Ridgetop: 61-67%

CHC WTG RAIN: 5%

WINDS: **3500 feet:** Southeast 5 to 10 mph.
Ridgetop: Becoming east 10 to 15 mph with gusts 15 to 20 mph possible.

INVERSION: Light inversion develops after 2100.

EXTENDED Outlook:

A deep surge of monsoonal moisture will move across western Montana on Sunday into Monday. This moisture, combined with some instability and energy aloft will produce scattered to numerous showers and thunderstorms on Sunday into Monday. Any thunderstorms will have the potential for gusty and erratic outflow winds, localized heavy rainfall, and cloud to ground lightning. A wetting rainfall is likely across the higher terrain of the complex during this time frame. Much cooler and higher relative humidity will develop on Sunday and persist into Monday. An active pattern with daily convection is possible for midweek with near normal temperatures.

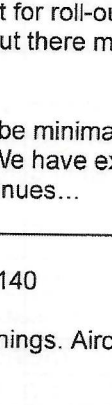


Radar



Obs

FIRE BEHAVIOR FORECAST

FORECAST NUMBER: 13	TYPE OF FIRE: Vegetation
FIRE NAME: Granite Pass Complex	OPERATIONAL PERIOD: 7/30 - 8/1/2021
DATE ISSUED: 7/29/2021	TIME ISSUED: 1730
UNIT: Lolo National Forest	SIGNED: 
	Typed/printed: Nic Elmquist, FBAN

INPUTS

WEATHER SUMMARY:

A ridge of high pressure will continue across the Granite Pass Complex today, resulting in warmer and drying conditions.

Temperatures 86°-91° **Relative Humidity** 23-28% **Wind** W 3-6 g 8, Ridges W 4-8 g 12 **Haines** 4

OUTPUTS

FIRE BEHAVIOR

GENERAL:

The driver of fire spread has been ground fire consuming the dead fuels which occasionally initiate torching, short crown runs when slope align with a continuous timber stringer, and short-range spotting.

The live vegetation is still holding moisture, which is limiting fire spread. In locations where these fuels are more exposed to the sun, such as the treatment areas along Rascal Ridge, the live fuels are drying and starting to carry fire.

The main indicator of the few larger burn days has been solar heating from clear skies over the fire. Smokey conditions will continue to reduce overall fire activity for the next several operational periods.

The peak burn period (1500-1800) should bring Probability of Ignition (PIG) of 80% for unshaded and 60% for shaded. The potential spotting distance will be up to 0.25 miles with the peak forecasted weather conditions.

SPECIFIC:

Lolo Creek Fire: The decision to pick-up the Lolo Creek fire has proven to have been a good one as it has allowed the opportunity for resources to focus on keeping the BM Hill fire from impacting Hwy 12.

BM Hill Fire: The BM Hill fire contributes to most of the complex's growth each day. Most of the activity will continue to be within the unburned pockets filling in and the portion that has slopped east of the Granite Ridge. Crews should be successful holding the opened decommissioned roads but need to watch out for roll-out on the steep slopes and mid-slope roads. There are limited opportunities to turn the corner to the north, but there may be more options if the weather pattern changes over the weekend.

Shotgun and Boulder Fires: Growth of the Shotgun and Boulder Fires will be minimal with the more favorable weather conditions and as they run into the BM Hill Fire and recent treatment units. We have expected the Shotgun Fire to cross the creek and make a slope driven run for the last few weeks...the wait continues...

AIR OPERATIONS:

Sunrise 0616, Civil Twilight ends 2140

There will continue to be smokey conditions over the fire for most of the mornings. Aircraft should continue to be able to provide support after 1400.

SAFETY

There has been an outstanding safety record on this incident to date. The fire is slowly chunking along so take your time and be deliberate in your actions. Continue to post good lookouts and communicate any changes. Keep up the good work.

DIVISION ASSIGNMENT LIST			Branch			Division/Group			
Incident Name			Granite			Alpha			
			Operational Period						
			Date: 7/31/2021			Time: 0530-2200			
Operations Personnel									
Operations Chief		Brent Olsen		Branch Director			Justin Kaber		
Safety Officer		Tony Petrilli		Division/Group Supervisor			Robert Vick Jesse Searles (t)		
Resources Assigned This Period									
Strike Team/Task Force/ Resource Designator	Req#	Last Shift	Leader	# Persons	Drop Off Point /Time	Pick Up Point / Time			
WFM 9 Mile Module	O-9901	8/2	Pheo Johnson	10	0530 Woodman Camp	2200 Woodman Camp			
ENG6 Wolf Rock	E-46	8/3	John Accardi	3	0530 Woodman Camp	2200 Woodman Camp			
ENG6 Firebrand Forestry	E-65	8/5	Aaron Franz	3	0530 Woodman Camp	2200 Woodman Camp			
ENG6 East Missoula E516	E-47	8/3	Sedgley	2	0530 Woodman Camp	2200 Woodman Camp			
UTV	E-39				0530 Woodman Camp	2200 Woodman Camp			
WTT1 Leviathan	E-35	8/1	Ron Grainger	1	0530 Woodman Camp	2200 Woodman Camp			
WTS1 310 Dust Control	E-51	8/4	Becker	1	0530 Woodman Camp	2200 Woodman Camp			
EMTF	O-186	8/10	Jiminez	1	0530 Woodman Camp	2200 Woodman Camp			
Work Assignments									
Construct direct and indirect fireline and continue to evaluate potential control lines.									
Determine resource needs and timeliness to complete current and potential control lines.									
Develop a firing plan for potential future operations if opportunity allows.									
Special Instructions									
No Helibase set up for Granite Complex, no 220 in the Plan.									
Division/Group Communication Summary									
Function	Channel	Freq RX	Tone TX	Freq TX	TONE TX	Function	Channel	Frequency RX	Frequency TX
CMD C51 TAC 1	1	171.03750	114.8	164.18750	114.8	A/G Pri	12	171.0250	171.0250
	4	168.05000	114.8	168.05000	114.8	A/G Sec	13	171.8250	171.8250
Prepared by Anya Moline		Approved By				Date 7/30/2021		Time 1800	

DIVISION ASSIGNMENT LIST			Branch			Division/Group			
Incident Name			Granite			Lima			
			Operational Period						
			Date: 7/31/2021			Time: 0530-2200			
Operations Personnel									
Operations Chief		Brent Olsen		Branch Director			Justin Kaber		
Safety Officer		Tony Petrilli		Division/Group Supervisor			Stryker Clark Jake Fallis (t)		
Resources Assigned This Period									
Strike Team/Task Force/ Resource Designator		Req#	Last Shift	Leader	# Persons	Drop Off Point /Time	Pick Up Point / Time		
TFLD				Ivor DeMonty		0530 Woodman Camp	2200 Woodman Camp		
TFLD		O-153	8/4	Herger (t)		0530 Woodman Camp	2200 Woodman Camp		
HC2 Georgia Crew 2		C-9	8/3	Greg Cohen	22	0530 Woodman Camp	2200 Woodman Camp		
ENG3 Cahoon		E-62	8/1	Goddard	3	0530 Woodman Camp	2200 Woodman Camp		
ENG4 A-1 Hart Ventures		E-63	8/7	Prock	3	0530 Woodman Camp	2200 Woodman Camp		
ENG4 E433 & Truck U631		E-9002		OConner	12	0530 Woodman Camp	2200 Woodman Camp		
ENG6 Saint John E-72		E-61	8/2	Vallejos	4	0530 Woodman Camp	2200 Woodman Camp		
WTS2 East Missoula RFD		E-37	8/1	Ferguson	1	0530 Woodman Camp	2200 Woodman Camp		
EMPF		O-127	8/2	Wallace	1	0530 Woodman Camp	2200 Woodman Camp		
EMTF		O-158	8/10	Kumpula	1	0530 Woodman Camp	2200 Woodman Camp		
Work Assignments									
Monitor Lolo Creek Fire and use aircraft and other available resources as needed.									
Scout North of Lolo Creek Fire and west of Hwy 12 for potential control lines.									
Construct indirect / checking line to keep fire west of Hwy 12 Corridor.									
Special Instructions									
No Helibase set up for Granite Complex, no 220 in the Plan.									
Division/Group Communication Summary									
Function	Channel	Frequency RX	TONE RX	Freq TX	TONE TX	Function	Channel	Frequency RX	Frequency TX
CMD C51	1	171.03750	114.8	164.18750	114.8	A/G Pri	12	171.0250	171.0250
TAC 5	7	166.72500	114.8	166.72500	114.8	A/G Sec	13	171.8250	171.8250
Prepared by		Approved By				Date		Time	
Anya Moline – RESL		Robin Jermyn – PSC				7/30/2021		1800	

DIVISION ASSIGNMENT LIST			Branch	Division/Group
Incident Name			Granite	Contingency / Structure
			Operational Period	
			Date: 7/31/2021	Time: 0530-2200
Operations Personnel				
Operations Chief	Brent Olsen		Branch Director	Justin Kaber
Safety Officer	Tony Petrilli		Division/Group Supervisor	Jon Norman Tasha Shields (t)

Resources Assigned This Period

Strike Team/Task Force/ Resource Designator	Req#	Last Shift	Leader	# Persons	Drop Off Point /Time	Pick Up Point / Time
HC2 Lava River	C-23		Jesus Ruiz	20	0530 Woodman Camp	2200 Woodman Camp
TFLD			Colton Herrera		0530 Woodman Camp	2200 Woodman Camp
T2IA Miller Timber 11B	C-10	8/3	Tanner	20	0530 Woodman Camp	2200 Woodman Camp
ENG3 A-1 Hart Ventures	E-85	8/4	Wetzell	3	0530 Woodman Camp	2200 Woodman Camp
ENG3 Rocky Mountain 86	E-86	8/10	Scott	3	0530 Woodman Camp	2200 Woodman Camp
CHIP Missoula RFD	E-74	8/10	Fulbright	2	0530 Woodman Camp	2200 Woodman Camp
CHIP2 Hester Forest Management	E-33	8/5	Jeremy Hester	2	0530 Woodman Camp	2200 Woodman Camp
MAST/BOOM T2 Shannon Bros.	E-48	8/5	Chuck Sandborg	2	0530 Woodman Camp	2200 Woodman Camp
WTS2 Saint Regis VFD 3	E-36	8/1	Dockter	1	0530 Woodman Camp	2200 Woodman Camp
FMOD Brothers Fire	O-64	8/6	Hearold	2	0530 Woodman Camp	2200 Woodman Camp
HETF Parke Logging	E-24	8/2	Parke	7	0530 Woodman Camp	2200 Woodman Camp
HETF King Mountain	E-25	8/6	Wehr	7	0530 Woodman Camp	2200 Woodman Camp
ENG3 Venon E-252	E-42	8/3	Flores	4	0530 Woodman Camp	2200 Woodman Camp
ENG6 B-72	E-64	8/2	Purinton	3	0530 Woodman Camp	2200 Woodman Camp
DOZ2 Anderson Logging	E-60	8/8	Anderson	2	0530 Woodman Camp	2200 Woodman Camp
DOZ2 Upper Valley	E-32	8/2	Kruckeberg	1	0530 Woodman Camp	2200 Woodman Camp
FEL2 Morris Forestry	E-28	8/3	Brett Morris	2	0530 Woodman Camp	2200 Woodman Camp
FEL2 Rude Logging	E-26	8/3	Craig Woods	2	0530 Woodman Camp	2200 Woodman Camp
EXCA BF Stone	E-1	8/4	Wear	2	0530 Woodman Camp	2200 Woodman Camp
TDMP Mark Teague	E-78	8/10	Teague	1	0530 Woodman Camp	2200 Woodman Camp
LOG	E-84	8/10	Rasmussen	1	0530 Woodman Camp	2200 Woodman Camp
UTV	E-38				0530 Woodman Camp	2200 Woodman Camp
WTS1	E-50	8/1	Jasper	1	0530 Woodman Camp	2200 Woodman Camp
FMOD	O-63	8/5	Ben Litz	2	0530 Woodman Camp	2200 Woodman Camp

Work Assignments

Continue construction and improvement of shaded fuel break along Forest Roads 699 / 461 / 2195 / 2194 / 5670 / 109.

Continue to evaluate potential control lines.

Determine resource needs and timelines to complete current and potential control lines.

Special Instructions

No Helibase set up for Granite Complex, no 220 in the Plan.

Division/Group Communication Summary

Function	Channel	Frequency RX	TONE RX	Freq TX	TONE TX	Function	Channel	Frequency RX	Frequency TX
CMD C51	1	171.03750	114.8	164.18750	114.8	A/G Pri	12	171.0250	171.0250
TAC 6	8	166.77500	114.8	166.77500	114.8	A/G Sec	13	171.8250	171.8250

Prepared by Anya Moline – RESL	Approved By Robin Jermyn – PSC	Date 7/30/2021	Time 1800
-----------------------------------	-----------------------------------	-------------------	--------------

AIR OPERATIONS SUMMARY
ICS 220

Prepared By: /S/ John Crotty
 AOB

Prepared Date: 07/29/2021

Prepared Time:1700

1. INCIDENT NAME: Granite Pass Complex	2. OPS PERIOD DATE: 7/30-8/1/21	START TIME: 0730	END TIME: 2130	SUNRISE: 06:16	SUNSET: 21:10
---	--	----------------------------	--------------------------	--------------------------	-------------------------

<p>3. REMARKS (Safety Notes, Hazards, Air Operations Special Equipment, etc.): Track all dipsite locations/number of dips/gallons taken. Track all drop locations/number of drops/gallons dropped. All GPS data to be collected in DEGREES, DECIMAL MINUTES format. AVOID Aerial Application of Retardant/Foam/Agent within 300' of Waterways, Bodies of Water, etc. If Retardant/Foam/Agent is dropped within these areas immediately notify the AOB and provide the following information: Lat/Long, estimated number of gallons and a map detailing the area. Idaho water on Idaho parts of fires MT water on MT parts of fires Clean and dry buckets to prevent cross contamination Avoid Mary's Frog Pond Lat 46 42.232N X 114 21.039W Fly with Transponder 1255.</p>	<p>4. Helibase Information: Name: Missoula Airport Latitude Longitude:</p>	<p>5. TFR's: Circle: 7NM Radius Altitude: 10000' MSL NOTAMS: 1/3587 Frequency: 118.1500 http://tfr.faa.gov/tfr2/list.html</p>
--	---	--

6. PERSONNEL	NAME	PHONE #	7. FREQUENCIES	TX	TONE	RX	TONE	AM/FM	8. MEDIVAC SHIP INFORMATION Day: Night:
AOBD	John McKee	406-370-7028	AIR TO GROUND Pri Tactical	171.0250		171.0250		FM	2 Bear Air 24 hr hoist FLIRS, EMT Whitefish, MT 1.5hrs ETA
			AIR TO GROUND Sec Command	171.8250		171.8250		FM	Life Flight 88 Air Amb 24 hr, Missoula, MT
ASGS			A/A F/W TFR VIC	118.1500		118.1500		AM	Alert Air Amb 24 hr, Kalispell, MT
ATGS			A/A ROTOR VIC	128.2000		128.2000		AM	Short Haul On request Helena or Salmon 45 min ETA
ATGS (t)			DECK					FM	
			A/G Tan Medical	155.3400	156.7	155.3400		FM	
			AIR GUARD	168.6250	110.9 (1)	168.6250		FM	

HELICOPTERS

FAA N#	T	MAKE/ MODEL	BASE	START	AVAIL	REMARKS	FAA N#	T	MAKE/MODEL	BASE	START	AVAIL	REMARKS
N160NW	I	UH-60	MSO	0800	0830	Bucket	N407TD	3	Bell 407	MSO	0800	0830	EU Local Loan
N617AC	3	Bell 407	MSO	0800	0830	IR, map, recon	0CH	1	CH-47	MSO	0800	0830	Surge IA Loan

FIXED WING

--	--	--	--	--	--	--	--	--	--	--	--	--	--	--

Missions:	Aircraft	AVAIL	Departure Point	Destination	
Air Attack	On request	0800		Fire	Provide Tactical Aerial Support
Bucket Support	Varies	0800	MSO	Fire	Bucket support requested by Ops, Branch, Division or Air Attack
Cargo		0800	TBD	Fire	As requested
PAX		0800	TBD	Fire	As requested
MEDIVAC	TBD	0800	TBD	TBD	Request through Communications on Command Repeater. Give location: lat/long. Check Medical plan/IAP.
Smokejumpers	TBD	0800	MSO	Fire	Jumpers, Paracargo, Jpads
UAS					
Retardant & Lead Plane	Varies	Varies	Various Tanker Bases	Fire	Request through Air Attack via Air/Ground. Give location and ground contact.
IA	Varies	Varies	Various	IA Fire	Within TFR

INCIDENT RADIO COMMUNICATIONS PLAN			Incident Name GRANITE PASS COMPLEX			Date/Time Prepared 7/30/21			Operational Period Date/Time 7/31/21 0530 - 2200		
Ch #	Function	Channel Name/Trunked Radio System Talkgroup	Assignment	RX Freq N or W	RX Tone/NAC	TX Freq N or W	Tx Tone/NAC	Mode A, D or M	Remarks		
1	COMMAND RPT	C51	ALL DIVISIONS	171.03750	114.8-T11	164.18750	114.8-T11	A	CMD RPT POINT 118		
2	COMMAND RPT	C55	ICP	173.93750	114.8-T11	167.52500	114.8-T11	A	CMD RPT BLUE MOUNTAIN		
3	COMMAND RPT	C68	ALL DIVISIONS	172.08750	114.8-T11	162.36250	114.8-T11	A	CMD RPT SPOK LOOKOUT		
4	TACTICAL	NIFC T1	DIV A	168.05000	114.8-T11	168.05000	114.8-T11	A	DIV A		
5	TACTICAL	NIFC T2	FOREST TAC IA	168.20000	CSQ	168.2000	CSQ	A	FOREST TAC IA		
6	TACTICAL	NIFC T3	DIV F	168.60000	114.8-T11	168.60000	114.8-T11	A	DIV F UNSTAFFED		
7	TACTICAL	NIFC T5	DIV L	166.72500	114.8-T11	166.72500	114.8-T11	A	DIV L		
8	TACTICAL	NIFC T6	CONTINGENCY	166.77500	114.8-T11	166.77500	114.8-T11	A	CONTINGENCY/STRUCTURE		
9	TACTICAL	NIFC T7		168.25000	114.8-T11	168.25000	114.8-T11	A	UNASSIGNED		
10	UNASSIGNED			UNASSIGNED		UNASSIGNED			UNASSIGNED		
11	COMMAND	LNF CMD	ALL DIVISIONS	172.3750	NAC \$F7E	164.1000	NAC \$430	D	LINKED TO MSO DISPATCH		
12	A/G TAC	A/G PRIMARY	ALL DIVISIONS	171.0250	CSQ	171.0250	CSQ	A	AIR TO GROUND PRI		
13	A/G CMD	A/G SECONDARY	ALL DIVISIONS	171.8250	CSQ	171.8250	CSQ	A	AIR TO GROUND SEC		
14	A/G TAC IA	A/G 48	ALL DIVISIONS	167.8875	CSQ	167.8875	CSQ	A	FS A/G TAC IA		
15	MEDEVAC A/G	TAN	ALL DIVISIONS	155.3400	156.7-T-6	155.3400	156.7-T-6	A	MED A/G PRI		
16	AIR GUARD	GUARD	ALL DIVISIONS	168.6250	CSQ	168.6250	110.9-T-1	A	AIR GUARD		
Prepared by (Communications Unit) W LOLO COMMUNICATIONS 720-428-0546 / COML SENE 406-581-9816					Incident Location LOLO NF, CONTROLLED UNCLASSIFIED INFORMATION//BASIC County State MT Latitude N Longitude 3-7-77 W						

The convention calls for frequency lists to show four digits after the decimal place, followed by either an "N" or a "W", depending on whether the frequency is narrow or wide band. Mode refers to either "A" or "D" indicating analog or digital (e.g. Project 25) or "M" indicating mixed mode. All channels are shown as if programmed in a control station, mobile or portable radio. Repeater and base stations must be programmed with the Rx and Tx reversed.

MEDICAL PLAN ICS 206	1. INCIDENT NAME	2. DATE PREPARED	3. TIME PREPARED	4. OPERATIONAL PERIOD				
	Granite Pass Complex	7/30/21	1500	7/31/21 0700 to 1900				
5. INCIDENT MEDICAL AID STATIONS								
MEDICAL AID STATIONS	LOCATION			PARAMEDICS				
None				YES		NO		
6. TRANSPORTATION								
A. AIR AMBULANCES								
NAME	LOCATION	PHONE		PARAMEDICS				
Life Flight Network	Missoula, MT	911 or Missoula Dispatch		YES		NO		
				X				
B. GROUND AMBULANCES & REM TEAMS								
NAME	LOCATION			PARAMEDICS				
				YES		NO		
Missoula Ambulance (MFD – E54)	DP 10 (Visitor's Center)			X				
Missoula Emergency Services, (MESI)	2680 Palmer, Missoula, MT 59808 Emergency 911 Office(406-549-2325)			X				
Missoula Rural Fire Dept. Station #5	12221 Hwy 93 South, Lolo MT 59847 Office # (406-549-6172)			X				
7. HOSPITALS								
NAME	ADDRESS	TRAVEL TIME		PHONE	HELIPAD		BURN CTR	
		AIR	GRND		YES	NO	YES	NO
Community Medical Center	2827 Fort Missoula Rd., Missoula, MT 59804	15 m	42 m	(406) 728-4100 For Helipad (406) 327-4171 Ext. 1	X			X
St. Patrick's Hospital	500 West Broadway, Missoula, MT 59804	17 m	50 m	(406) 543-7271 for Heli Pad (406) 329-2620	X			X
Seeley Swan Medical Center	3050 MT-Hwy 83, Seely, MT 59868 Open 8-5 Mon-Sat	32 m	1 h 40 m	406-677-2277	X			X
University Of Utah Health Center	50 Medical Dr. N Salt Lake City UT 84132	3h	7.35	801-581-2700	X		X	
8. MEDICAL EMERGENCY PROCEDURES								
LINE "MEDICAL-EMERGENCY" PLAN:				LINE "NON-EMERGENCY INCIDENT" PLAN:				
<ul style="list-style-type: none"> - Crew Supervisor to contact Division Supervisor/Operations with: <ul style="list-style-type: none"> • Patient Complaint, Condition and Location via Tactical or Command frequency. Priority 1/Red & 2/Yellow Patients • Triggers Incident within Incident (IWI) - Division Supervisor/Operations contacts Communications: <ul style="list-style-type: none"> • Division Supervisor or *POC will run "Medical-Emergency" on the Command frequency. • Division Supervisor or *POC to use "Medical Incident Report" worksheet on back of this page or in IRPG. • Communications contacts Medical Unit Leader on the Command frequency or cell phone (407-797-6600 or 805-319-5009) <p>*POC (Point of Contact) and/or Operations</p>				<ul style="list-style-type: none"> - Crew Supervisor to contact Division Supervisor with: <ul style="list-style-type: none"> • Patient Complaint, Condition and Location via Tactical or Command frequency. Priority 3/Green Patients • Does not trigger Incident within Incident (IWI) - Division Supervisor contacts Communications: <ul style="list-style-type: none"> • Division Supervisor or *POC will run "Non-Emergency Incident" on the Command frequency. • Division Supervisor or *POC to use "Medical Incident Report" worksheet on back of this page or in IRPG. • Communications contacts Medical Unit Leader on the Command frequency or cell phone (407-797-6600 or 805-319-5009) <p>IN-CAMP or ICP – 24 HOUR MEDICAL</p> <p>0600 to 2200 - Contact Communications with: Patient Complaint, Condition and Location via the Command frequency. Communications will notify the Medical Unit Leader Cell Phone (407-797-6600 or 805-319-5009)</p> <p>2200 to 0600 – Contact Communications with: Patient Complaint, Condition and Location via the Command frequency. Dial 911 to report medical if no contact with Communications.</p>				
ICS 206 6/2017	9. PREPARED BY: Rob Hammond MEDL (T)			10. REVIEWED BY: (Safety Officer) Troy Phelps SOF1 (t)				

FINANCE MESSAGE

OPTIONS FOR SUBMITTING TIME:

1. **Fillable PDF CTR/Shift Ticket:** Please use QR code on IAP and scroll to fillable CTR's & Shift Tickets button to access forms. If you do not have QR capabilities finance can e-mail you the forms directly.

TIP: **In order to use fillable pdf forms, you must have some version of Adobe Acrobat downloaded on your device. If you have any issues opening the documents call finance for assistance. **

2. **Hard Copy CTR/Shift Ticket:** Fill out a hard copy CTR, snap a picture and email into finance. If you send in a picture, please make sure it is legible and includes the supervisor's signature at the bottom! Please make sure to include your phone number in the **Remarks** in case we have questions.
3. OR if you do not have a smartphone/tablet you can fill out a hard copy.

FINANCE DEMOB PROCESS

- Email all finance documentation (time must be projected for travel home).
- Only 1 representative per resource to close out at finance at ICP.
- Abide by scheduled DMOB time or call finance for an unscheduled DMOB.
- **Government agency resources** that would like to close out their time 100% remotely should email their final CTR with travel, email and phone number listed on the CTR. If you have any questions or concerns about this process, please call 720-219-4538.

2021.westlolo.finance@firenet.gov

DEMOBILIZATION PROCESS

If you are scheduled to be released from this incident, please complete the following:

- Return all accountable property to Supply and/or Communications.
- Have vehicle/equipment inspected at Ground Support, if required, and go through the weed wash/aquatic invasive species station.
- Submit CTRs/shift tickets and finalize OF-288/OF-286 invoice with Finance.
- Scan QR code on IAP cover to complete DMOB Form.
- Demobilization process is complete – travel safe!

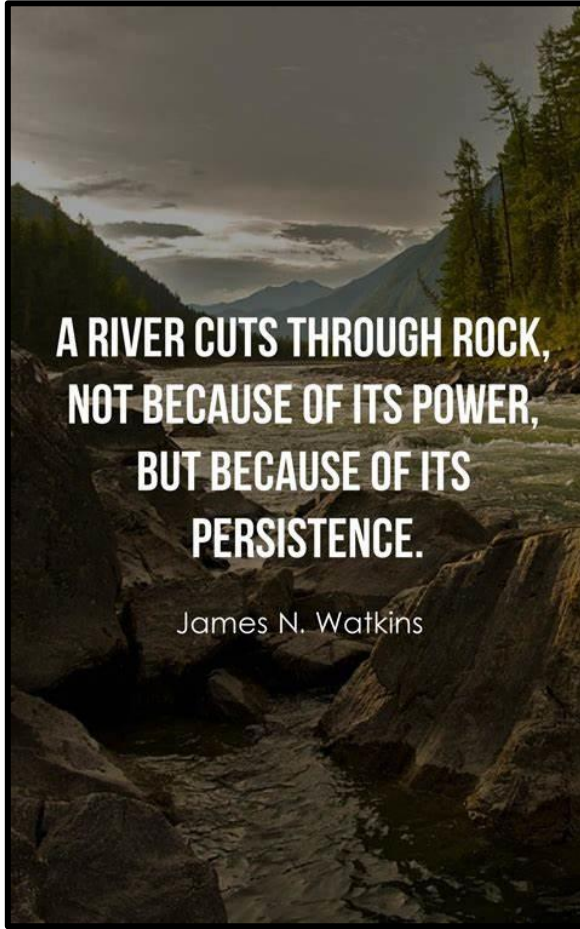
2021.westlolo.demob@firenet.gov

720-441-8211



HUMAN RESOURCE MESSAGE

There is zero tolerance for drugs or alcohol on this fire incident.



With ordinary talent and extraordinary perseverance, all things are attainable.

Never give up!

Debby Hassel, HRSP (979) 255-5513

hrspfire@gmail.com

West Lolo Complex Email Addresses

2021.westlolo.plans@firenet.gov

2021.westlolo.logistics@firenet.gov

2021.westlolo.demob@firenet.gov

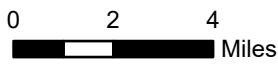
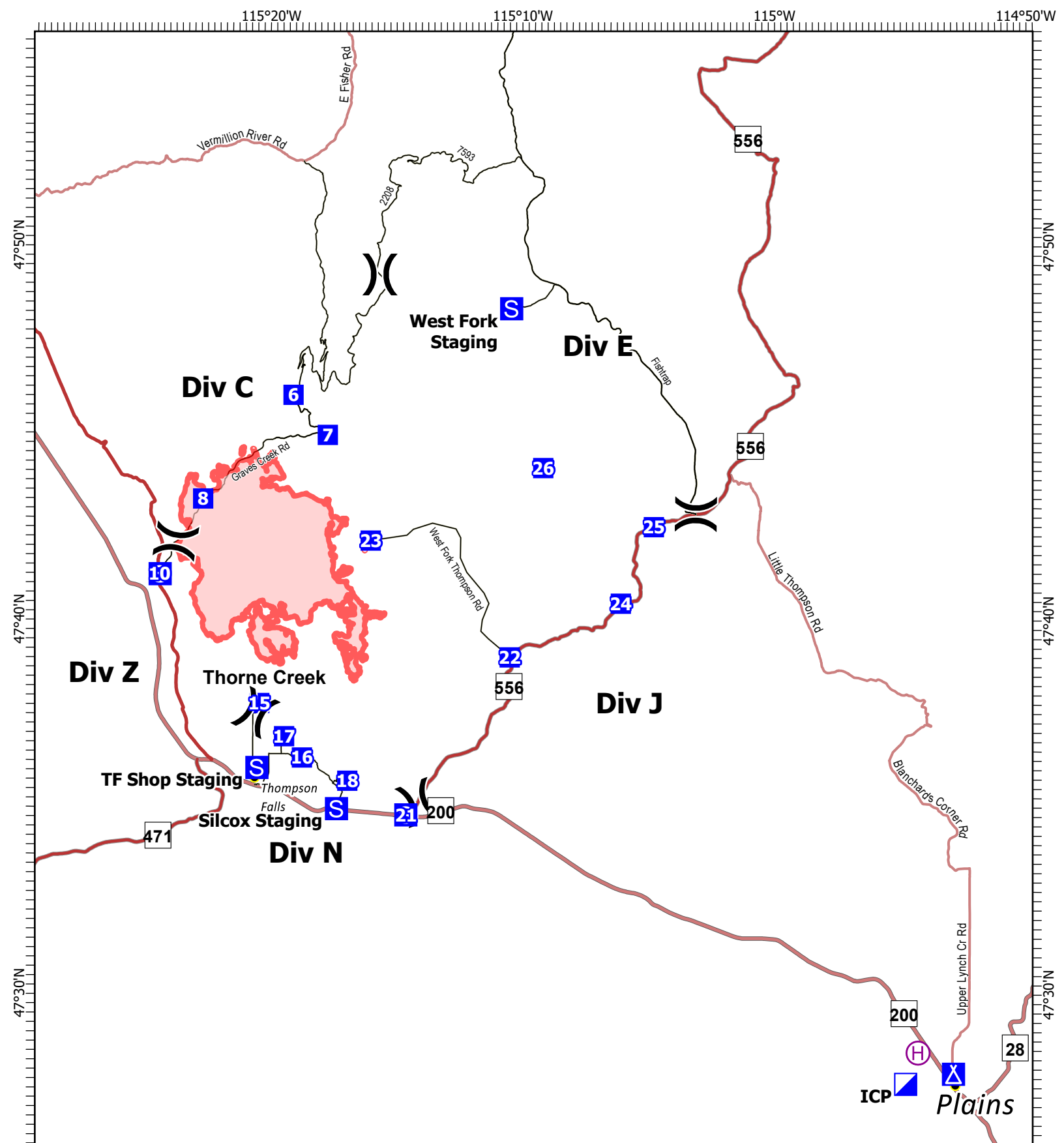
2021.westlolo.resources@firenet.gov

2021.westlolo.ordering@firenet.gov

2021.westlolo.finance@firenet.gov

West Lolo Complex Phone List

Phone Number	Contact	Location
720-326-2773	Dave Moore	Helibase
720-428-0546	Dustin Sene	Comms
720-818-2565	Lynda Pike	Time Equipment
720-520-2221	Aubrey Sullivan	Check-in
720-219-4538	Marta Lujan	Time
720-441-8211	Tanya Murphy	Demob



mmurphy
7/30/2021 1911
North American 1983 Datum. Lat/Long Grid

Transportation Map

West Lolo Complex-
Thorne
MT-LNF-000893
7/31/2021 Day

13,831 acres at 7/29/21 @ 2230

- Wildfire Daily Fire Perimeter
- Helibase
- Division Break
- Incident Command Post
- Drop Point
- Camp
- Staging Area

MEDICAL PLAN (ICS 206 WF)

Controlled Unclassified Information//Basic

Medical Incident Report

FOR A NON-EMERGENCY INCIDENT, WORK THROUGH CHAIN OF COMMAND TO REPORT AND TRANSPORT INJURED PERSONNEL AS NECESSARY.

FOR A MEDICAL EMERGENCY: IDENTIFY ON SCENE INCIDENT COMMANDER BY NAME AND POSITION AND ANNOUNCE "MEDICAL EMERGENCY" TO INITIATE RESPONSE FROM IMT COMMUNICATIONS/DISPATCH.

Use the following items to communicate situation to communications/dispatch.

1. CONTACT COMMUNICATIONS / DISPATCH (**Verify correct frequency prior to starting report**)

Ex: "Communications, Div. Alpha. Stand-by for Emergency Traffic."

2. INCIDENT STATUS: *Provide incident summary (including number of patients) and command structure.*

Ex: "Communications, I have a Red priority patient, unconscious, struck by a falling tree. Requesting air ambulance to Forest Road 1 at (Lat./Long.) This will be the Trout Meadow Medical, IC is TFLD Jones. EMT Smith is providing medical care."

Severity of Emergency / Transport Priority	<input type="checkbox"/> RED / PRIORITY 1 Life or limb threatening injury or illness. Evacuation need is IMMEDIATE <i>Ex: Unconscious, difficulty breathing, bleeding severely, 2° – 3° burns more than 4 palm sizes, heat stroke, disoriented.</i> <input type="checkbox"/> YELLOW / PRIORITY 2 Serious Injury or illness. Evacuation may be DELAYED if necessary. <i>Ex: Significant trauma, unable to walk, 2° – 3° burns not more than 1-3 palm sizes.</i> <input type="checkbox"/> GREEN / PRIORITY 3 Minor Injury or illness. Non-Emergency transport <i>Ex: Sprains, strains, minor heat-related illness.</i>	
Nature of Injury or Illness & Mechanism of Injury		<i>Brief Summary of Injury or Illness (Ex: Unconscious, Struck by Falling Tree)</i>
Transport Request		<i>Air Ambulance / Short Haul/Hoist Ground Ambulance / Other</i>
Patient Location		<i>Descriptive Location & Lat. / Long. (WGS84)</i>
Incident Name		<i>Geographic Name + "Medical" (Ex: Trout Meadow Medical)</i>
On-Scene Incident Commander		<i>Name of on-scene IC of Incident within an Incident (Ex: TFLD Jones)</i>
Patient Care		<i>Name of Care Provider (Ex: EMT Smith)</i>

3. INITIAL PATIENT ASSESSMENT: *Complete this section for each patient as applicable (start with the most severe patient)*

Patient Assessment: See IRPG page 106

Treatment:

4. TRANSPORT PLAN:

Evacuation Location (if different): *(Descriptive Location (drop point, intersection, etc.) or Lat. / Long.)* Patient's ETA to Evacuation Location:

Helispot / Extraction Site Size and Hazards:

5. ADDITIONAL RESOURCES / EQUIPMENT NEEDS:

Example: Paramedic/EMT, Crews, Immobilization Devices, AED, Oxygen, Trauma Bag, IV/Fluid(s), Splints, Rope rescue, Wheeled litter, HAZMAT, Extrication

6. COMMUNICATIONS: Identify State Air/Ground EMS Frequencies and Hospital Contacts as applicable

Function	Channel Name/Number	Receive (RX)	Tone/NAC *	Transmit (TX)	Tone/NAC *
COMMAND					
AIR-TO-GRND					
TACTICAL					

7. CONTINGENCY: **Considerations:** *If primary options fail, what actions can be implemented in conjunction with primary evacuation method? Be thinking ahead.*

8. ADDITIONAL INFORMATION: *Updates/Changes, etc.*

REMEMBER: Confirm ETA's of resources ordered. Act according to your level of training. Be Alert. Keep Calm. Think Clearly. Act Decisively.

