

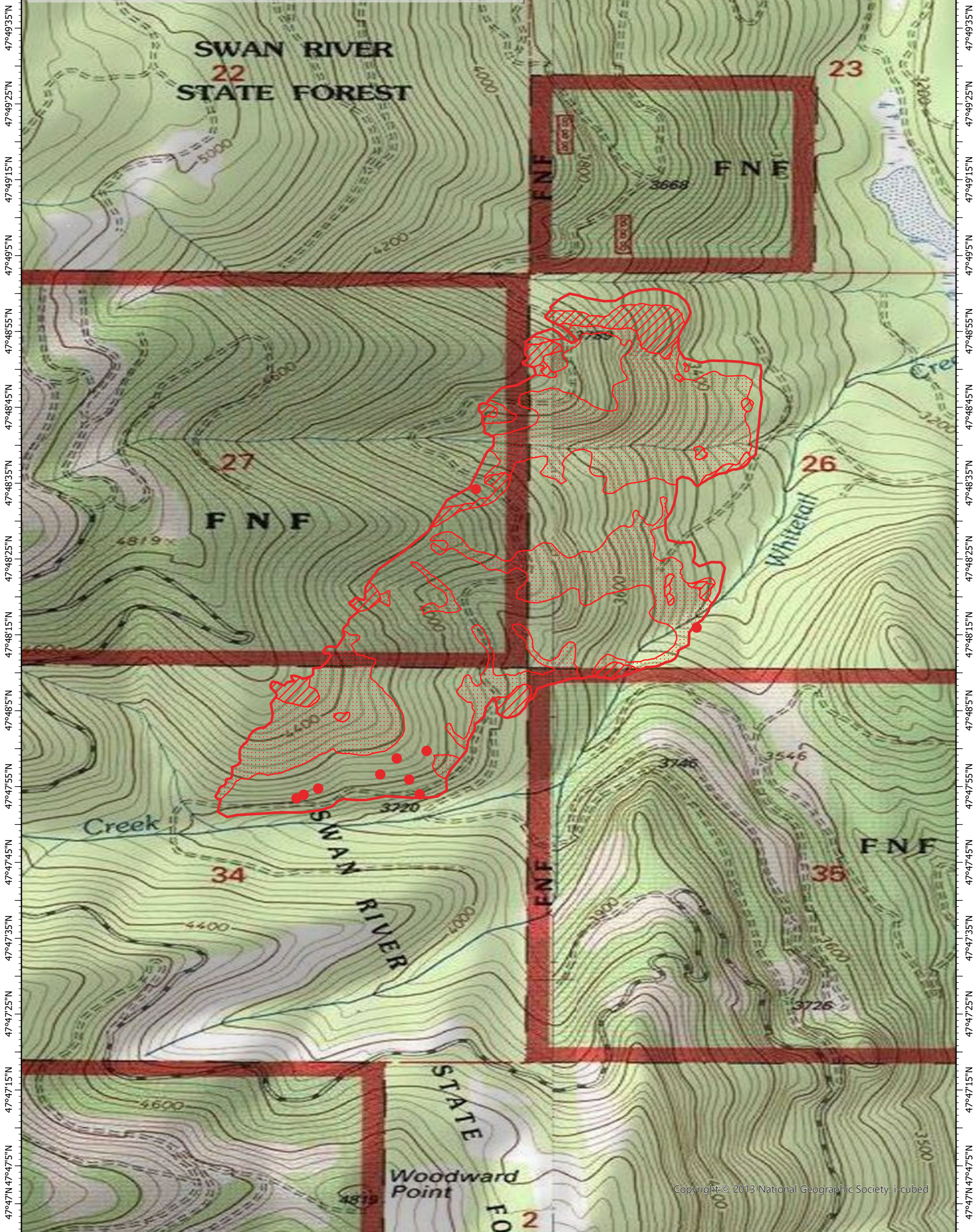
113°53'40"W 113°53'30"W 113°53'20"W 113°53'10"W 113°53"W 113°52'50"W 113°52'40"W 113°52'30"W 113°52'20"W 113°52'10"W 113°52"W 113°51'50"W

Whitetail Creek Fire IR Map

MT-NWS-000748

Thursday, 5 August 2021, 2109 MDT

358 Interpreted Acres

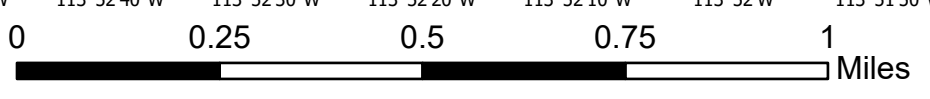


113°53'40"W 113°53'30"W 113°53'20"W 113°53'10"W 113°53"W 113°52'50"W 113°52'40"W 113°52'30"W 113°52'20"W 113°52'10"W 113°52"W 113°51'50"W

Legend

- IR Isolated Heat
- Burn Perimeter
- ▨ IR Intense Heat
- ▩ IR Scattered Heat

Scale: 1:15,000
 Projection: WGS 1984
 Produced by: Owyhee Air Research, LLC
 IR Interpreter: S. Osberg
 Contact: fire@owyheear.com (208) 442-5405



Copyright © 2013 National Geographic Society. i-cubed