

Woods Creek Fire

Air Operations Map

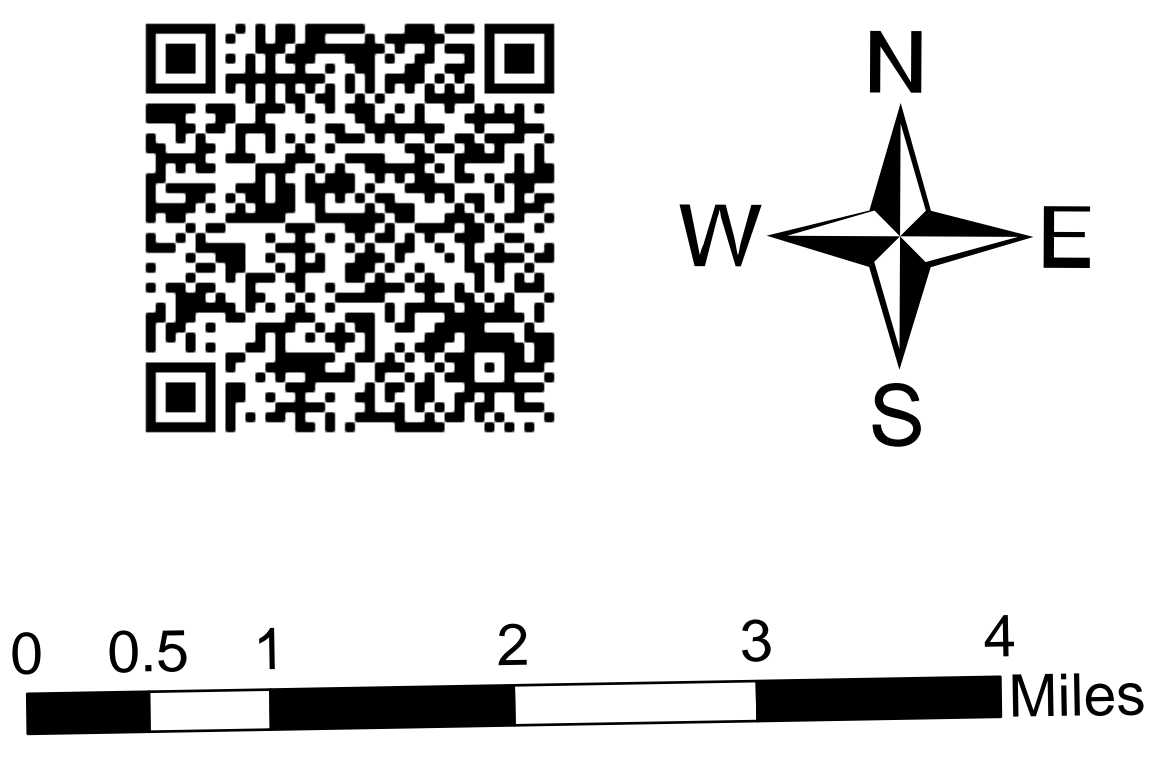
MT-HLF-258

Approx 15,252 GIS Acres @ 1400 7/31

Operational Shift
8/01/2021

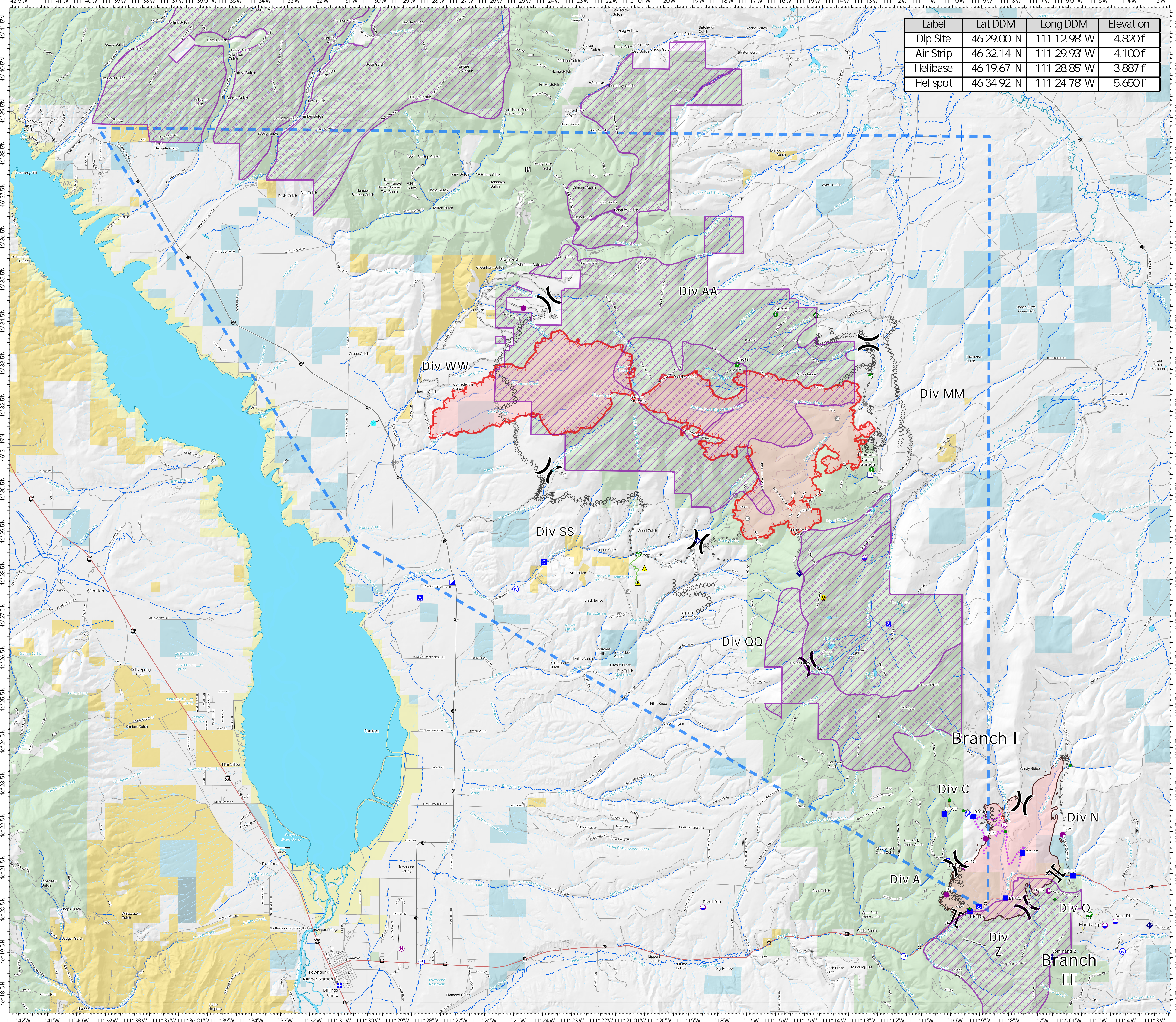


- Airstrip or Airport
- Dip Site
- Helispot
- Helibase
- Unimproved Landing Area
- Division Break
- Branch Break
- Medical
- Incident Command Post
- Drop Point
- Camp
- Staging Area
- Lookout
- Hot Spot - Spot Fire
- Value at Risk
- Other
- Landmark
- Gate
- Bridge
- Water Development or Draft Site
- Resource Location
- Repair Point
- Internet Access
- Repeater
- Safety Zone
- Hazard
- Water Source
- Trail
- Secondary Hwy
- Local Connector
- Local Road
- AWD
- Completed Burnout
- Completed Dozer Line
- Completed Fuel Break
- Completed Hand Line
- Completed Mixed Construction Line
- Completed Plow Line
- Completed Road as Line
- Planned Dozer Line
- Planned Mixed Construction Line
- Planned Road as Line
- Access or Improved Road
- Highlighted Feature
- Road Repair
- Escape Route
- Route
- Temporary Flight Restriction
- Fire Edge
- Contained Line
- Wildfire Daily Fire Perimeter
- Roadless Area



7/31/2021 2238
Acres from IR
North American 1983 Datum, Lat,Long
Grid

| Label | Lat DDM | Long DDM | Elevat on |
|-----------|-------------|--------------|-----------|
| Dip Site | 46 29.00' N | 111 12.98' W | 4,820f |
| Air Strip | 46 32.14' N | 111 29.93' W | 4,100f |
| Helibase | 46 19.67' N | 111 28.85' W | 3,887 f |
| Helispot | 46 34.92' N | 111 24.78' W | 5,650 f |



111°42'5"W 111°41'W 111°40'W 111°39'W 111°38'W 111°37'W 111°36'01"W 111°35'W 111°34'W 111°33'W 111°32'W 111°31'W 111°30'W 111°29'W 111°28'W 111°27'W 111°26'W 111°25'W 111°24'W 111°23'W 111°22'W 111°21'01"W 111°20'W 111°19'W 111°18'W 111°17'W 111°16'W 111°15'W 111°14'W 111°13'W 111°12'W 111°11'W 111°10'W 111°9'W 111°8'W 111°7'W 111°6'01"W 111°5'W 111°4'W 111°3'W