

Woods Creek Fire

Air Operations Map

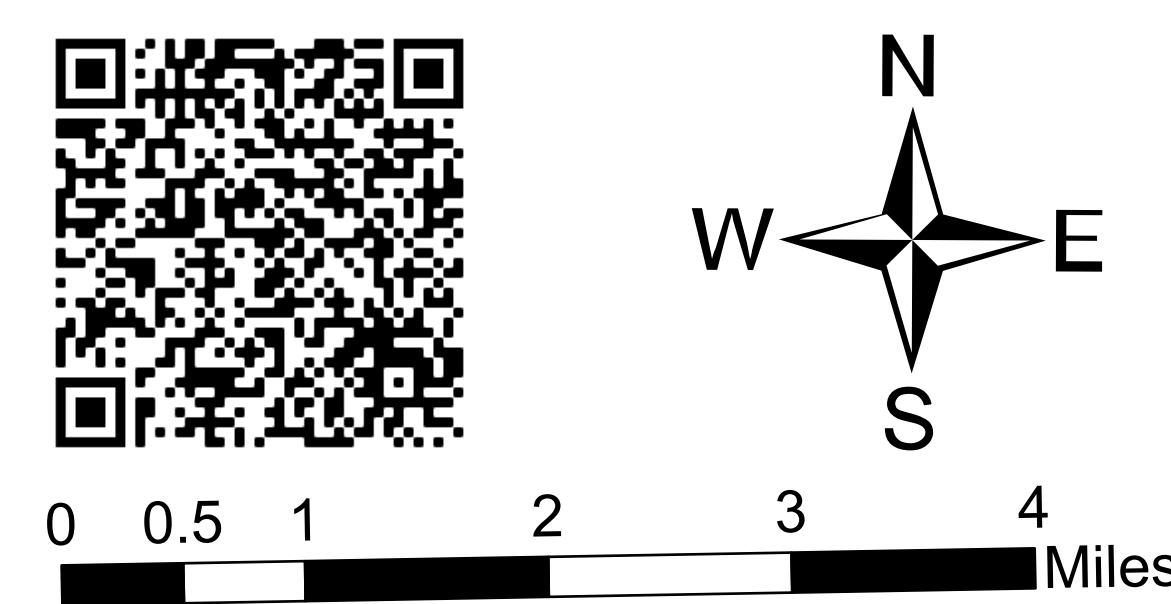
MT-HLF-258

Approx 20,761 GIS Acres @ 2343 08/04

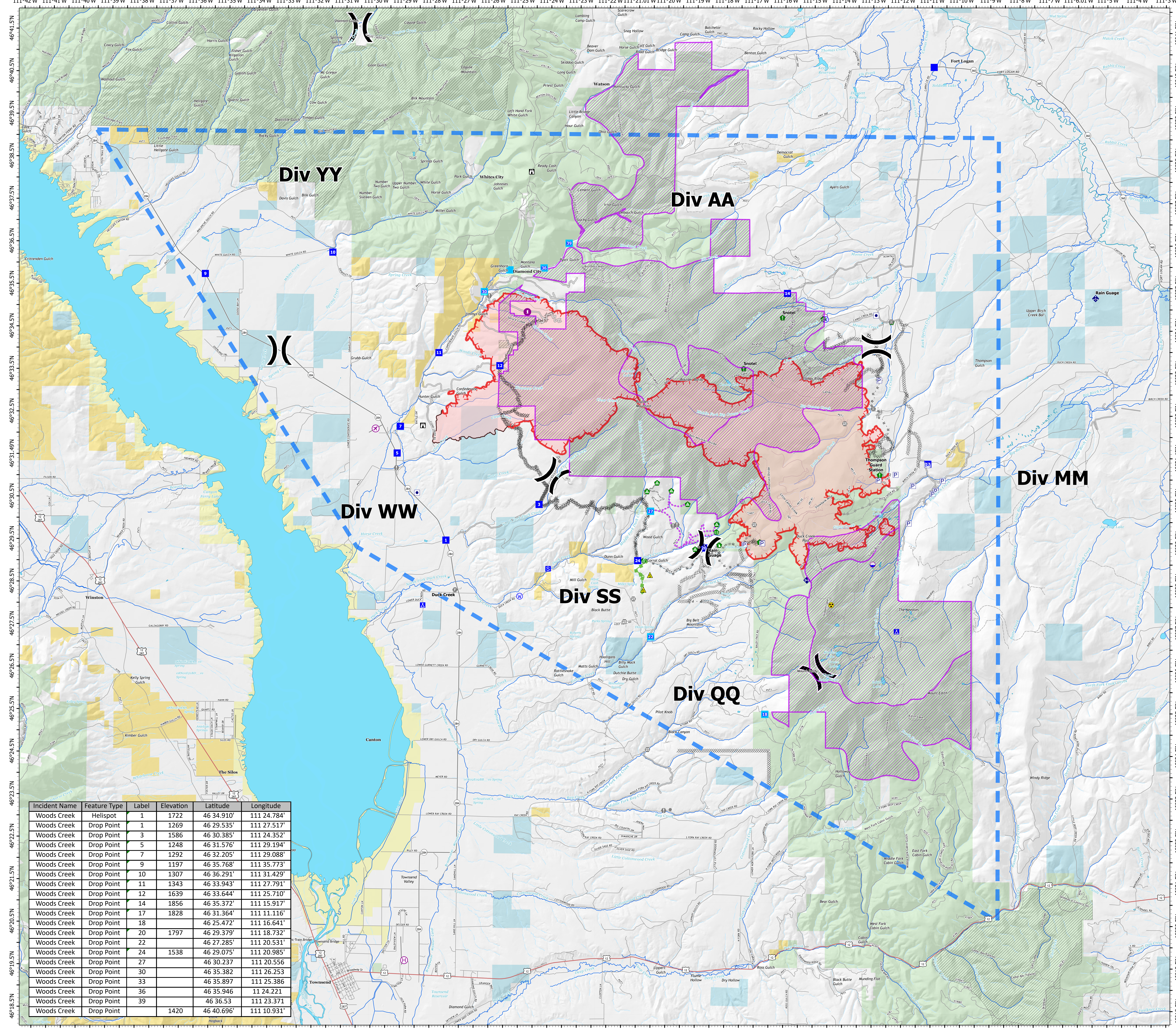
Operational Shift
8/06/2021



- Airstrip or Airport
- Dip Site
- Helispot
- Helibase
- Division Break
- Drop Point
- Camp
- Staging Area
- Lookout
- Hot Spot - Spot Fire
- Value at Risk
- Other
- Gate
- Fire Station
- Bridge
- Water Development or Draft Site
- Stream Crossing
- Resource Location
- Landing or Log Deck
- Dozer Push
- Mobile Weather Unit
- Internet Access
- Repeater
- Safety Zone
- Hazard
- Water Source
- Trail
- Secondary Hwy
- Local Connector
- Local Road
- 4WD
- Completed Dozer Line
- Completed Hand Line
- Completed Plow Line
- Completed Road as Line
- Planned Dozer Line
- Planned Mixed Construction Line
- Planned Road as Line
- Planned Secondary Line
- Access or Improved Road
- Other
- Escape Route
- Route
- Temporary Flight Restriction
- Fire Edge
- Contained Line



8/5/2021 2101
Acres from IIR
North American 1983 Datum, Lat,Long
Grid



Incident Name	Feature Type	Label	Elevation	Latitude	Longitude
Woods Creek	Helispot	1	1722	46 34.910'	111 24.784'
Woods Creek	Drop Point	1	1269	46 29.535'	111 27.517'
Woods Creek	Drop Point	3	1586	46 30.385'	111 24.352'
Woods Creek	Drop Point	5	1248	46 31.576'	111 29.194'
Woods Creek	Drop Point	7	1292	46 32.205'	111 29.088'
Woods Creek	Drop Point	9	1197	46 35.768'	111 35.773'
Woods Creek	Drop Point	10	1307	46 36.291'	111 31.429'
Woods Creek	Drop Point	11	1343	46 33.943'	111 27.791'
Woods Creek	Drop Point	12	1639	46 33.644'	111 25.710'
Woods Creek	Drop Point	14	1856	46 35.372'	111 15.917'
Woods Creek	Drop Point	17	1828	46 31.364'	111 11.116'
Woods Creek	Drop Point	18		46 25.472'	111 16.641'
Woods Creek	Drop Point	20	1797	46 29.379'	111 18.732'
Woods Creek	Drop Point	22		46 27.285'	111 20.531'
Woods Creek	Drop Point	24	1538	46 29.075'	111 20.985'
Woods Creek	Drop Point	27		46 30.237'	111 20.556'
Woods Creek	Drop Point	30		46 35.382'	111 26.253'
Woods Creek	Drop Point	33		46 35.897'	111 25.386'
Woods Creek	Drop Point	36		46 35.946'	11 24.221'
Woods Creek	Drop Point	39		46 36.53'	111 23.371'
Woods Creek	Drop Point		1420	46 40.696'	111 10.931'