

Woods Creek Fire MT-HLF-258

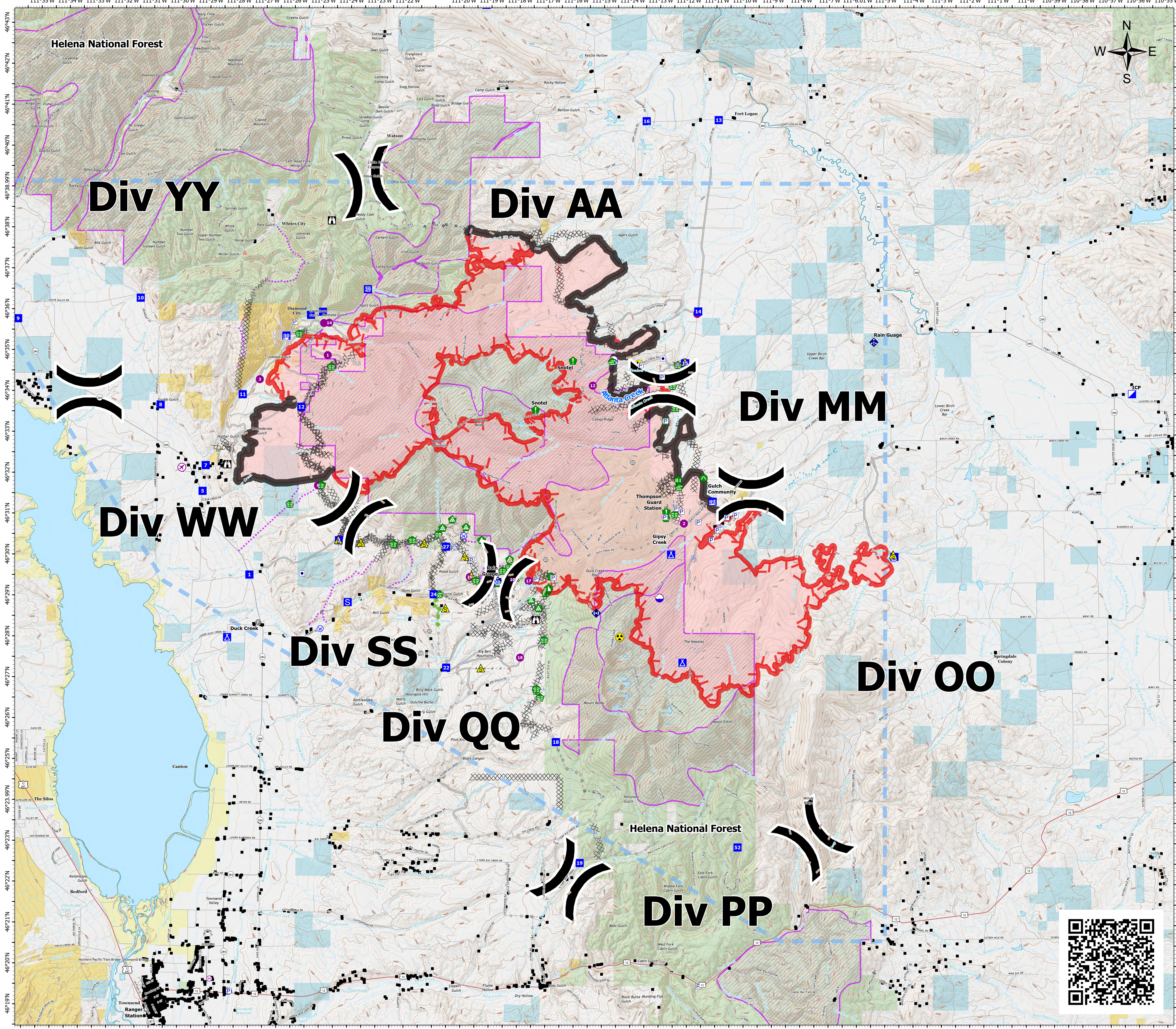
Briefing Map

Approx 48,524 GIS Acres @ 08/10 1700

Operational Shift
8/11/2021



- Structures
- Airstrip or Airport
- Dip Site
- Helispot
- Helibase
- Division Break
- Medical
- Incident Command Post
- Drop Point
- Camp
- Staging Area
- Lookout
- Hot Spot - Spot Fire
- Other
- Landmark
- Gate
- Fire Station
- Bridge
- Water Development or Draft Site
- Stream Crossing
- Resource Location
- Repair Point
- Landing or Log Deck
- Fence - Cut/Damaged
- Dozer Push
- Culvert
- Mobile Weather Unit
- Internet Access
- Repeater
- Safety Zone
- Hazard
- Water Source
- Trail
- Secondary Hwy
- Local Connector
- Local Road
- 4WD
- Completed Burnout
- Completed Dozer Line
- Completed Fuel Break
- Completed Hand Line
- Completed Plow Line
- Completed Road as Line
- Planned Dozer Line
- Planned Mixed Construction Line
- Planned Road as Line
- Planned Secondary Line
- Access or Improved Road
- Other
- Escape Route
- Route
- Temporary Flight Restriction
- Fire Edge
- Contained Line
- Wildfire Daily Fire Perimeter
- Roadless Area



Div YY

Div AA

Div MM

Div WW

Div SS

Div QQ

Div OO

Div PP

0 0.5 1 2 Miles

SA Red Team GIS
Date Exported: 8/10/2021 9:37 PM
North American 1983 Datum, LatLong Grid

