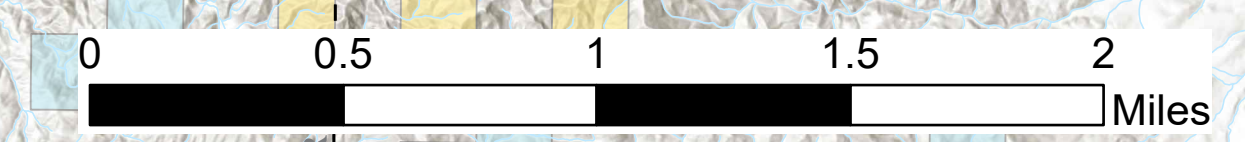


# Air Operations All Fires Overview With Hazards

American Fork - MT-HLF-005087  
Divide Complex: Balsinger & Ellis  
MT-HLF-005079  
Woods Creek - MT-HLF-000258

8/12/2021

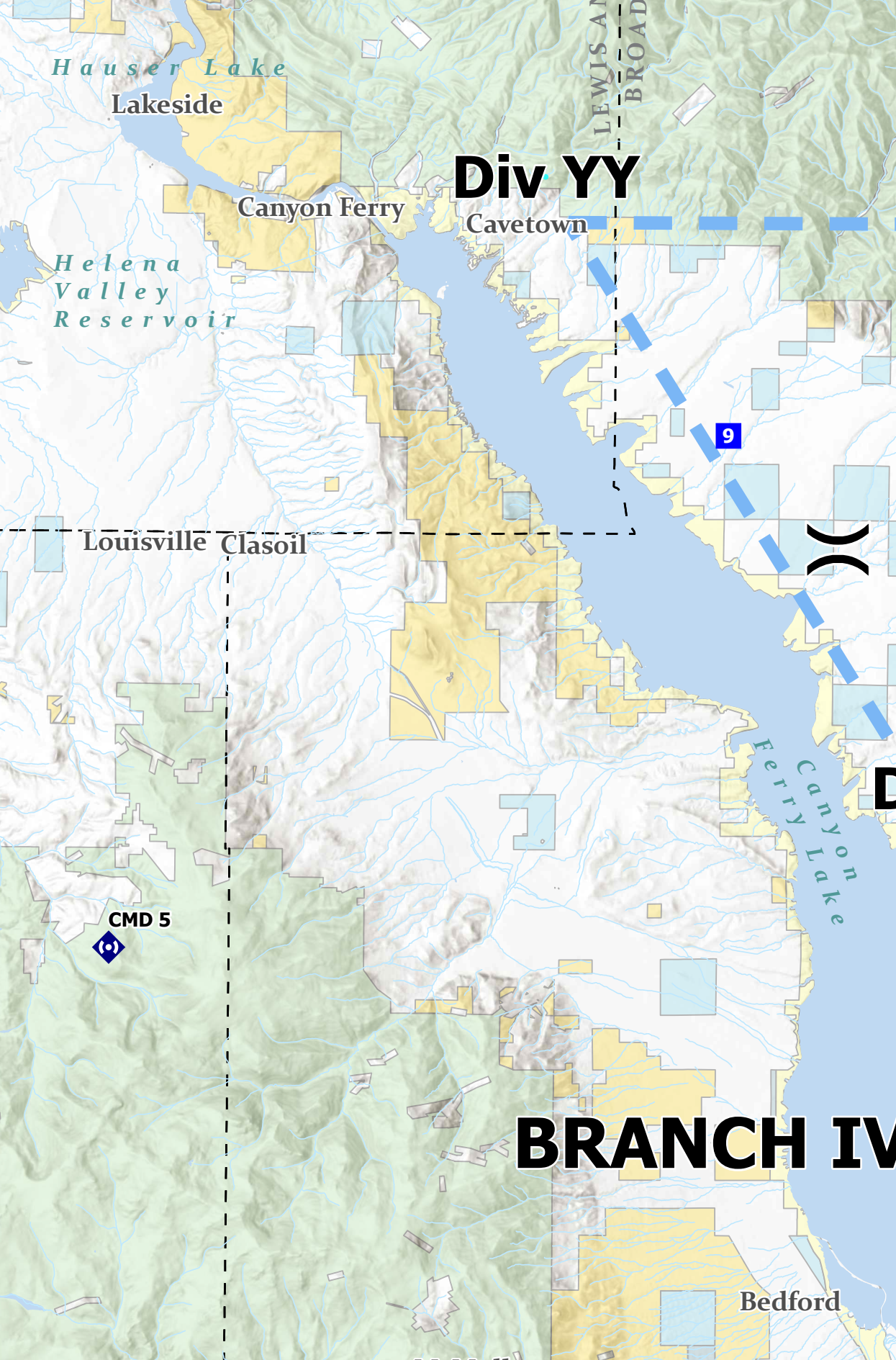


**Legend**

- Airstrip or Airport
- Dip Site
- Helispot
- Hillbase
- Division Break
- Branch Break
- Medical
- Incident Command Post
- Drop Point
- Closure
- Staging Area
- Water Development or Draft Site
- Culvert
- Mobile Weather Unit
- Internet Access
- Repeater
- Safety Zone
- Hazard
- Water Source
- Completed Burnout
- Completed Dozer Line
- Completed Fuel Break
- Completed Hand Line
- Completed PLOW Line
- Planned Dozer Line
- Planned Mixed Construction Line
- Planned Road as Line
- Planned Secondary Line
- Access or Improved Road
- Other
- Escape Route
- Route
- Temporary Flight Restriction
- Fire Edge
- Wildfire Daily Fire Perimeter
- Stream
- Ponds/Lakes
- County

**Land Ownership**

- Local Government
- State Government
- US Bureau of Land Management
- US Bureau of Reclamation
- US Dept of Agriculture
- US Dept of Defense
- US Fish and Wildlife Service
- US Forest Service
- Other US Government



**American Fork**

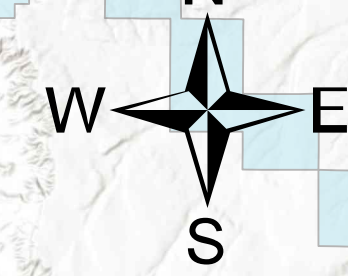
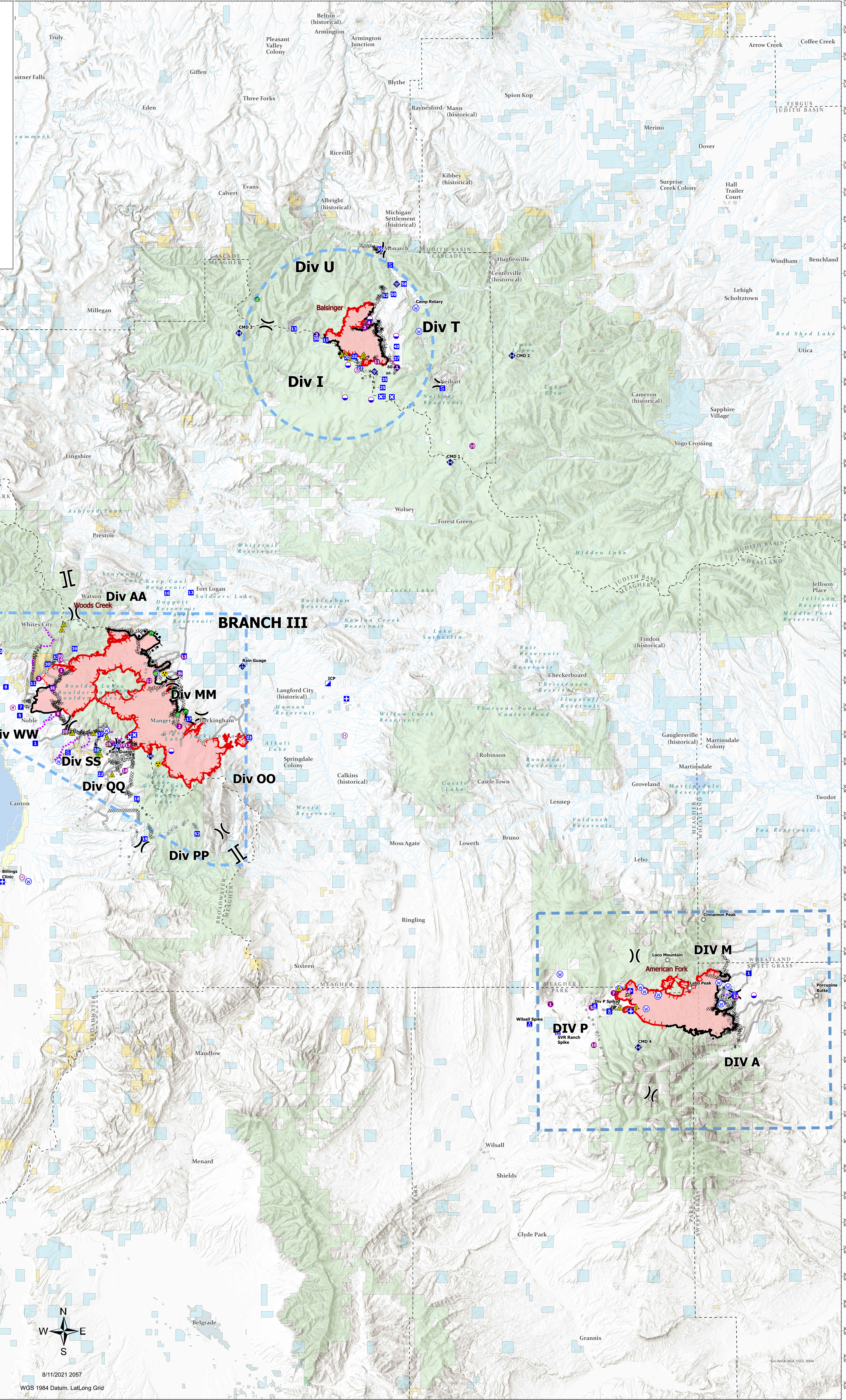
Feature Type	Label	Latitude	Longitude	Elev Feet
Drop Point	1	46° 12.452' N	110° 11.555' W	6,017
Drop Point	7	46° 09.748' N	110° 26.422' W	6,377
Drop Point	8	46° 10.143' N	110° 27.954' W	6,102
Helispot	1	46° 10.290' N	110° 22.646' W	6,782
Helispot	5	46° 10.015' N	110° 28.287' W	6,096
Helispot	7	46° 11.083' N	110° 25.936' W	
Helispot	8	46° 11.165' N	110° 24.296' W	
Helispot	10	46° 07.237' N	110° 26.853' W	6,756
Helispot	12	46° 10.753' N	110° 22.946' W	6,160
Repeater	CMD 4	46° 07.060' N	110° 23.369' W	

**Divide Complex**

Feature Type	Label	Latitude	Longitude	Elev Feet
Drop Point	10	N46° 58.116' W	W110° 53.378'	
Drop Point	11	N46° 59.339' W	W110° 56.472'	
Drop Point	13	N47° 00.162' W	W110° 59.893'	
Drop Point	20	N46° 58.037' W	W110° 54.156'	
Drop Point	22	N46° 58.117' W	W110° 53.379'	
Drop Point	23	N46° 57.261' W	W110° 52.789'	
Drop Point	25	N46° 55.820' W	W110° 53.337'	
Drop Point	30	N46° 59.429' W	W110° 57.693'	
Drop Point	35	N46° 56.430' W	W110° 50.124'	
Drop Point	37	N46° 57.971' W	W110° 48.825'	
Drop Point	40	N46° 58.847' W	W110° 48.823'	
Drop Point	50	N47° 02.697' W	W110° 49.143'	
Drop Point	52	N47° 02.605' W	W110° 50.030'	
Drop Point	54	N47° 03.476' W	W110° 48.003'	
Drop Point	55	N47° 06.037' W	W110° 50.572'	
Helispot	1	N46° 57.307' W	W110° 48.777'	
Helispot	10	N46° 53.467' W	W110° 49.703'	
Helispot	2	N46° 59.712' W	W110° 57.435'	
Helispot	3	N47° 00.256' W	W110° 52.255'	
Helispot	4	N47° 00.615' W	W110° 51.804'	
Helispot	11	N46° 57.735' W	W110° 50.923'	
Repeater	CMD 1	N46° 50.293' W	W110° 43.089'	
Repeater	CMD 2	N46° 58.144' W	W110° 36.392'	
Repeater	CMD 3	N46° 59.845' W	W111° 5.814'	

**Woods Creek**

Feature Type	Label	Latitude	Longitude	Elevation
Helispot	1	46 34.910'	111 24.784'	1722
Helispot	2	46 30.823'	111 12.131'	2061
Helispot	3	46 31.313'	111 27.085'	1415
Helispot	4	46 33.646'	111 25.687'	1640
Helispot	8	46 34.745'	111 12.129'	
Helispot	9	46 31.723'	111 25.105'	
Helispot	10	46 29.444'	111 18.197'	
Helispot	11	46 33.615'	111 25.702'	
Helispot	12	46 34.192'	111 15.374'	
Helispot	13	46 35.956'	111 11.677'	
Helispot	14	46 35.706'	111 24.735'	
Helispot	15	46 34.141'	111 24.941'	
Helispot	16	46 29.502'	111 19.708'	
Helispot	17	46 29.411'	111 17.627'	
Helispot	18	46 27.539'	111 17.916'	
Helispot	19	46 35.899'	111 24.92	
Drop Point	1	46 35.899'	111 27.517'	1269
Drop Point	3	46 30.385'	111 24.352'	1586
Drop Point	5	46 31.576'	111 29.194'	1248
Drop Point	7	46 32.205'	111 29.088'	1292
Drop Point	8	46 33.682'	111 30.899'	
Drop Point	9	46 35.768'	111 35.773'	1197
Drop Point	10	46 36.291'	111 31.429'	1307
Drop Point	11	46 33.943'	111 27.791'	1343
Drop Point	12	46 33.644'	111 25.710'	1638
Drop Point	13	46 40.686'	111 10.931'	1420
Drop Point	14	46 35.372'	111 15.917'	1856
Drop Point	15	46 34.744'	111 12.1	1619
Drop Point	16	46 40.685'	111 13.49	1474
Drop Point	17	46 31.364'	111 11.116'	1628
Drop Point	18	46 25.472'	111 16.641'	1974
Drop Point	19	46 22.516'	111 15.784'	1676
Drop Point	20	46 29.379'	111 18.732'	1797
Drop Point	21	46 30.019'	111 4.674'	1579
Drop Point	22	46 27.285'	111 20.531'	1965
Drop Point	24	46 29.075'	111 20.985'	1538
Drop Point	27	46 30.237'	111 20.556'	1796
Drop Point	30	46 35.382'	111 26.253'	1442
Drop Point	33	46 35.897'	111 25.386'	1506
Drop Point	36	46 35.946'	111 24.221'	1530
Drop Point	39	46 36.53'	111 23.371'	1569
Drop Point	52	46 22.906'	111 10.208'	1910
Drop Point	54	46 40.686'	111 10.931'	1420
Repeater	CMD 5	46 27.285'	111 43.029'	1933
Repeater	Duck Creek Comm	46 28.629'	111 15.225'	2545



8/11/2021 2057  
WGS 1984 Datum, Lat/Long Grid

© NASA, NOAA, FEMA