

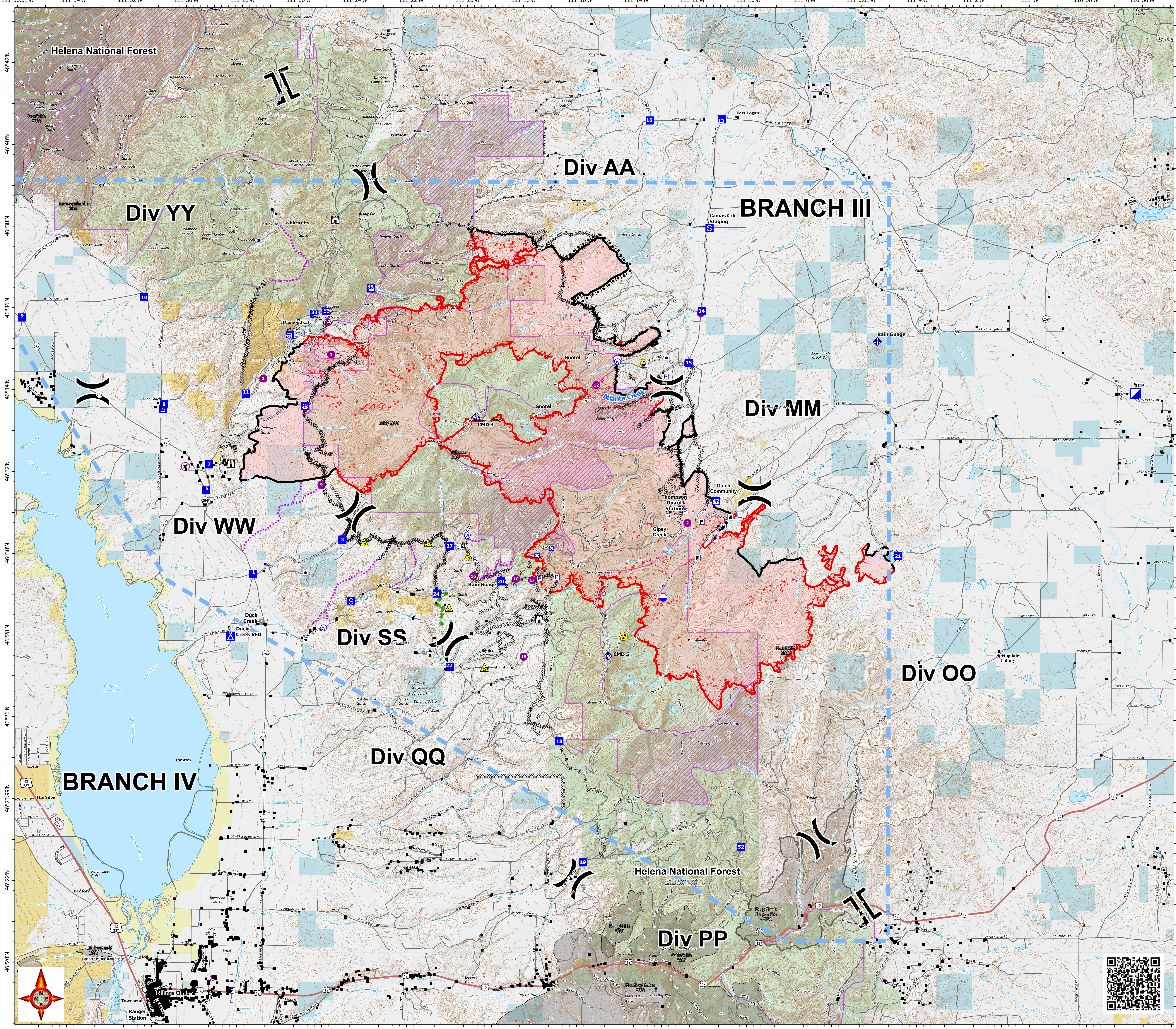
# Woods Creek Fire MT-HLF-258 Operations Map

IR 48,806 GIS Acres @ 08/12 2148

Operational Shift  
8/13/2021



- Structures
- ⊗ Airstrip or Airport
- Dip Site
- ⊕ Helispot
- ⊕ Helibase
- ⌘ Division Break
- ⌘ Branch Break
- ⊕ Medical
- ⊕ Incident Command Post
- ⊕ Drop Point
- ⊕ Closure
- ⊕ Camp
- ⊕ Staging Area
- ⊕ Lookout
- Hot Spot - Spot Fire
- Other
- Landmark
- Gate
- Fire Station
- Bridge
- Mobile Weather Unit
- Internet Access
- Repeater
- Safety Zone
- Hazard
- Water Source
- Trail
- Secondary Hwy
- Local Connector
- Local Road
- 4WD
- Completed Burnout
- Completed Dozer Line
- Completed Fuel Break
- Completed Hand Line
- Completed Mixed Construction Line
- Completed Plow Line
- Completed Road as Line
- Planned Dozer Line
- Planned Mixed Construction Line
- Planned Road as Line
- Planned Secondary Line
- Access or Improved Road
- Other
- Road Repair
- Escape Route
- Route
- Temporary Flight Restriction
- Fire Edge
- Contained Line
- Wildfire Daily Fire Perimeter
- Roadless Area
- Fire History
- IR 20210812 2148 Isolated Heat Sources
- IR 20210812 2148 Intense Heat
- IR 20210812 2148 Scattered Heat



RMINT Type 1 GIS  
Date Exported: 8/13/2021 5:55 AM  
North American 1983 Datum, LatLong Grid

