

Woods Creek

Transportation Map

MT-HLF-000258

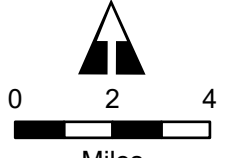
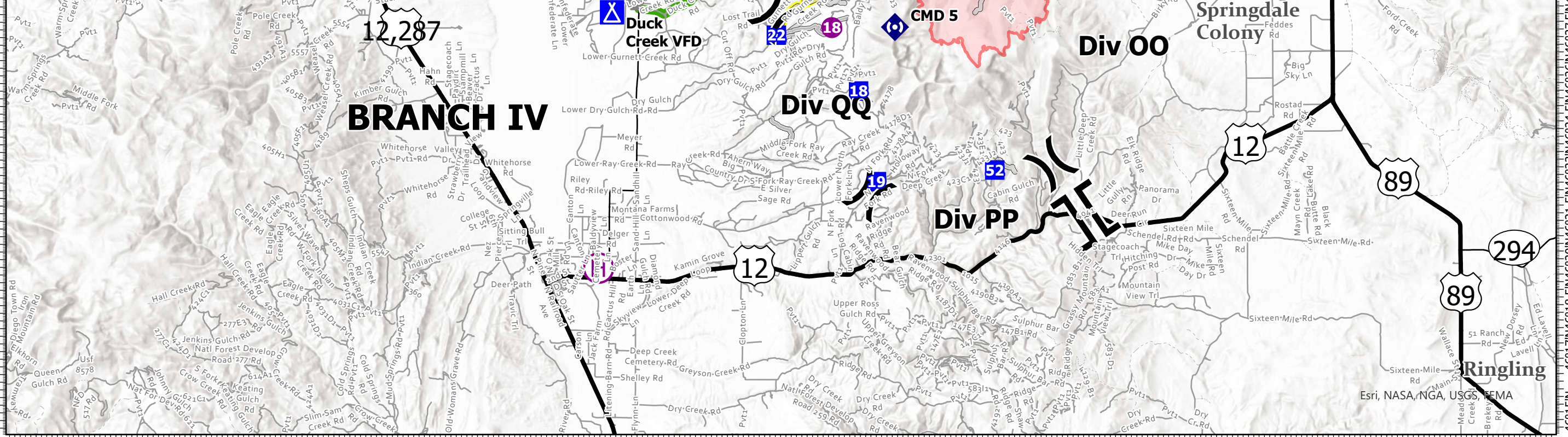


Operational Shift:
08/13 Day

48,679 Acres:
08/11/2021 @ 2231

- Airstrip or Airport
- Helispot
- Helibase
- Division Break
- Branch Break
- Incident Command Post
- Drop Point
- Camp
- Staging Area
- Fire Station
- Repeater
- Access or Improved Road
- Wildfire Daily Fire Perimeter
- Primary Route
- Secondary Route
- Controlled-access Highway
- Major Road
- Local Connecting Road
- Local Road
- 4WD
- Local Government
- State Government
- US Bureau of Land Management
- US Bureau of Reclamation
- US Dept of Agriculture
- US Dept of Defense
- US Fish and Wildlife Service
- US Forest Service
- Other US Government

FC Point Type	Label	Latitude	Longitude
Camp	Duck Creek VFD	46° 28.004' N	111° 28.294' W
Drop Point	1	46° 29.535' N	111° 27.517' W
Drop Point	10	46° 36.291' N	111° 31.429' W
Drop Point	11	46° 33.943' N	111° 27.791' W
Drop Point	12	46° 33.644' N	111° 25.710' W
Drop Point	13	46° 40.696' N	111° 10.931' W
Drop Point	14	46° 36.014' N	111° 11.643' W
Drop Point	15	46° 34.744' N	111° 12.100' W
Drop Point	16	46° 40.665' N	111° 13.490' W
Drop Point	17	46° 31.364' N	111° 11.116' W
Drop Point	18	46° 25.472' N	111° 16.641' W
Drop Point	19	46° 22.516' N	111° 15.784' W
Drop Point	20	46° 29.379' N	111° 18.732' W
Drop Point	21	46° 30.019' N	111° 04.674' W
Drop Point	22	46° 27.285' N	111° 20.531' W
Drop Point	24	46° 29.075' N	111° 20.985' W
Drop Point	27	46° 30.237' N	111° 20.556' W
Drop Point	3	46° 30.385' N	111° 24.352' W
Drop Point	30	46° 35.382' N	111° 26.253' W
Drop Point	33	46° 35.897' N	111° 25.386' W
Drop Point	36	46° 35.974' N	111° 24.961' W
Drop Point	39	46° 36.530' N	111° 23.371' W
Drop Point	5	46° 31.576' N	111° 29.194' W
Drop Point	52	46° 22.906' N	111° 10.208' W
Drop Point	7	46° 32.205' N	111° 29.088' W
Drop Point	8	46° 33.682' N	111° 30.699' W
Drop Point	9	46° 35.767' N	111° 35.773' W
Helispot	1	46° 34.910' N	111° 24.784' W
Helispot	10	46° 29.444' N	111° 18.197' W
Helispot	11	46° 33.615' N	111° 25.702' W
Helispot	12	46° 34.192' N	111° 15.374' W
Helispot	16	46° 29.502' N	111° 19.708' W
Helispot	17	46° 29.410' N	111° 17.627' W
Helispot	18	46° 27.539' N	111° 17.916' W
Helispot	2	46° 30.823' N	111° 12.131' W
Helispot	3	46° 34.313' N	111° 27.186' W
Helispot	4	46° 33.646' N	111° 25.687' W
Helispot	9	46° 31.723' N	111° 25.105' W
Helispot	H-13	46° 35.956' N	111° 11.677' W
Helispot	H-15	46° 30.414' N	111° 24.341' W
Helispot	H-19	46° 35.699' N	111° 24.920' W
Helispot	H-20	46° 35.983' N	111° 24.899' W
Helispot	H-8	46° 34.745' N	111° 12.129' W
Staging Area		46° 28.874' N	111° 24.034' W
Staging Area		46° 33.554' N	111° 30.735' W
Staging Area	Camas Crk	46° 38.036' N	111° 11.374' W



RM IMT 1
8/12/2021 2310
Acres from IR

North American 1983 Datum. LatLong Grid

111°57'W 111°54'W 111°51.01'W 111°48'W 111°45'W 111°42'W 111°39'W 111°36.01'W 111°33'W 111°30'W 111°27'W 111°24'W 111°21.01'W 111°18'W 111°15'W 111°12'W 111°9.5'W 111°7'W 111°4.5'W 111°2'W 111°0'W 110°57.5'W 110°54.5'W 110°51.5'W 110°48.5'W 110°45.5'W

111°56.5'W 111°53.5'W 111°50.5'W 111°47.5'W 111°44.5'W 111°41.5'W 111°38.5'W 111°35.5'W 111°32.5'W 111°29.5'W 111°26.5'W 111°23.5'W 111°20.5'W 111°17.5'W 111°14.5'W 111°11.5'W 111°9'W 111°6.5'W 111°4'W 111°1.5'W 110°59'W 110°56'W 110°53'W 110°50'W 110°47'W 110°44'W