

# Woods Creek Fire MT-HLF-258

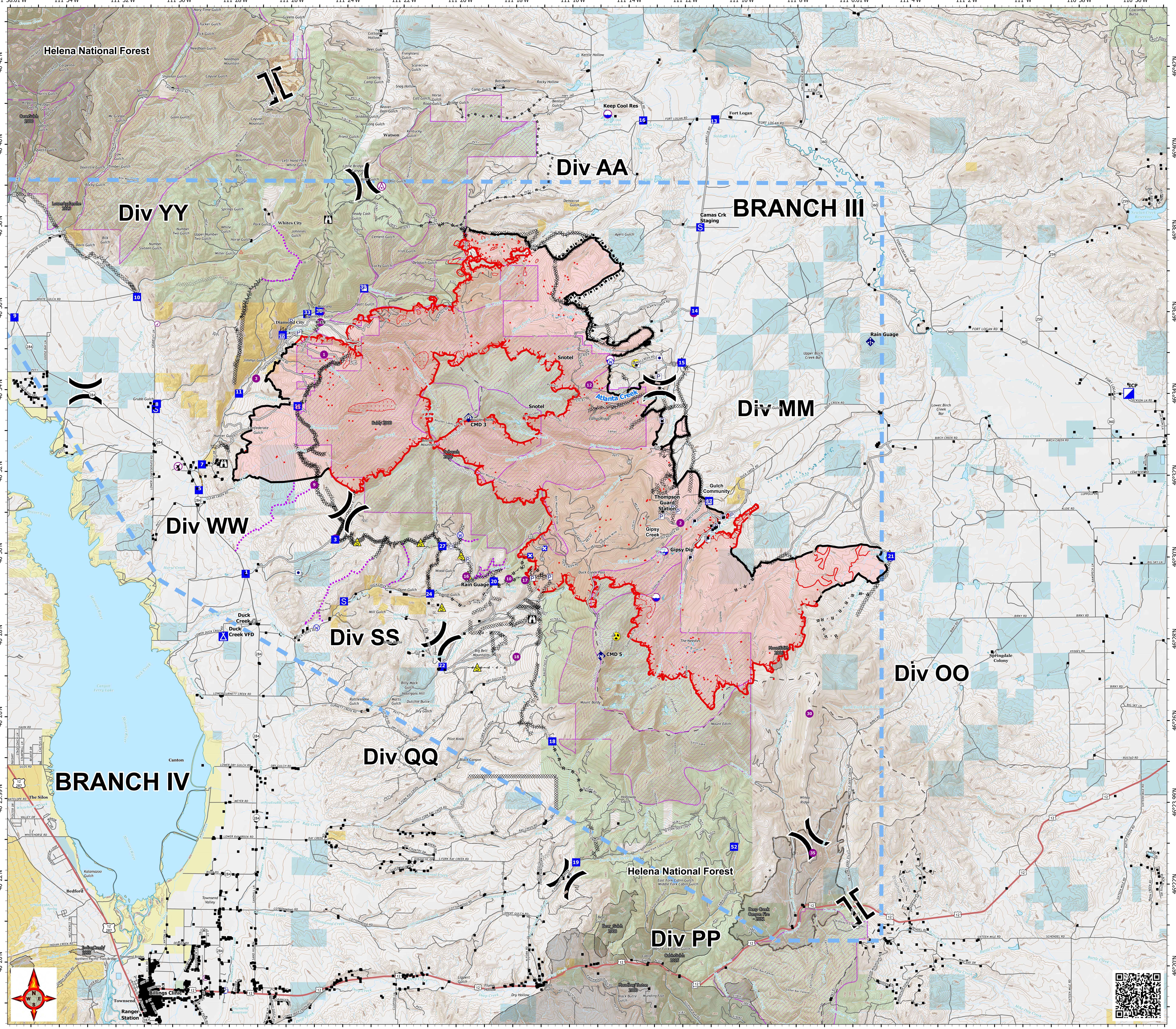
## Operations Map

48,770 GIS Acres @ 2148, 8/12  
New IR 48,996 ac. @ 2307, 8/13

Operational Shift  
8/14/2021



- Structures
- ⊗ Aerial Hazard
- ⊗ Airstrip or Airport
- ⊗ Check Point
- ⊗ Dip Site
- ⊗ Helispot
- ⊗ Helibase
- ⊗ Division Break
- ⊗ Branch Break
- ⊗ Medical
- ⊗ Incident Command Post
- ⊗ Drop Point
- ⊗ Closure
- ⊗ Camp
- ⊗ Staging Area
- ⊗ Lookout
- ⊗ Hot Spot - Spot Fire
- Other
- Landmark
- ⊗ Gate
- ⊗ Fire Station
- ⊗ Bridge
- ⊗ Mobile Weather Unit
- ⊗ Internet Access
- ⊗ Repeater
- ⊗ Safety Zone
- ⊗ Hazard
- ⊗ Water Source
- ⋯ Trail
- Secondary Hwy
- Local Connector
- Local Road
- 4WD
- ⊗ Completed Burnout
- ⊗ Completed Dozer Line
- ⊗ Completed Fuel Break
- ⊗ Completed Hand Line
- ⊗ Completed Mixed Construction Line
- ⊗ Completed Plow Line
- ⊗ Completed Road as Line
- ⊗ Planned Dozer Line
- ⊗ Planned Mixed Construction Line
- ⊗ Planned Road as Line
- ⊗ Planned Secondary Line
- ⊗ Access or Improved Road
- ⊗ Other
- ⊗ Road Repair
- ⊗ Route
- ⊗ Temporary Flight Restriction
- ⊗ Fire Edge
- ⊗ Contained Line
- ⊗ Wildfire Daily Fire Perimeter
- ⊗ Roadless Area
- ⊗ Fire History
- ⊗ Fuel Treatments
- ⊗ Exclusions = Rx, no slashing
- ⊗ IR 20210813 2307 Scattered Heat
- ⊗ IR 20210813 2307 Intense Heat
- ⊗ IR 20210813 2307 Isolated Heat Sources



0 1 2 3 Miles

