

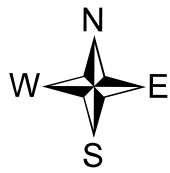
Woods Creek Fire MT-HLF-258

Pilot Map

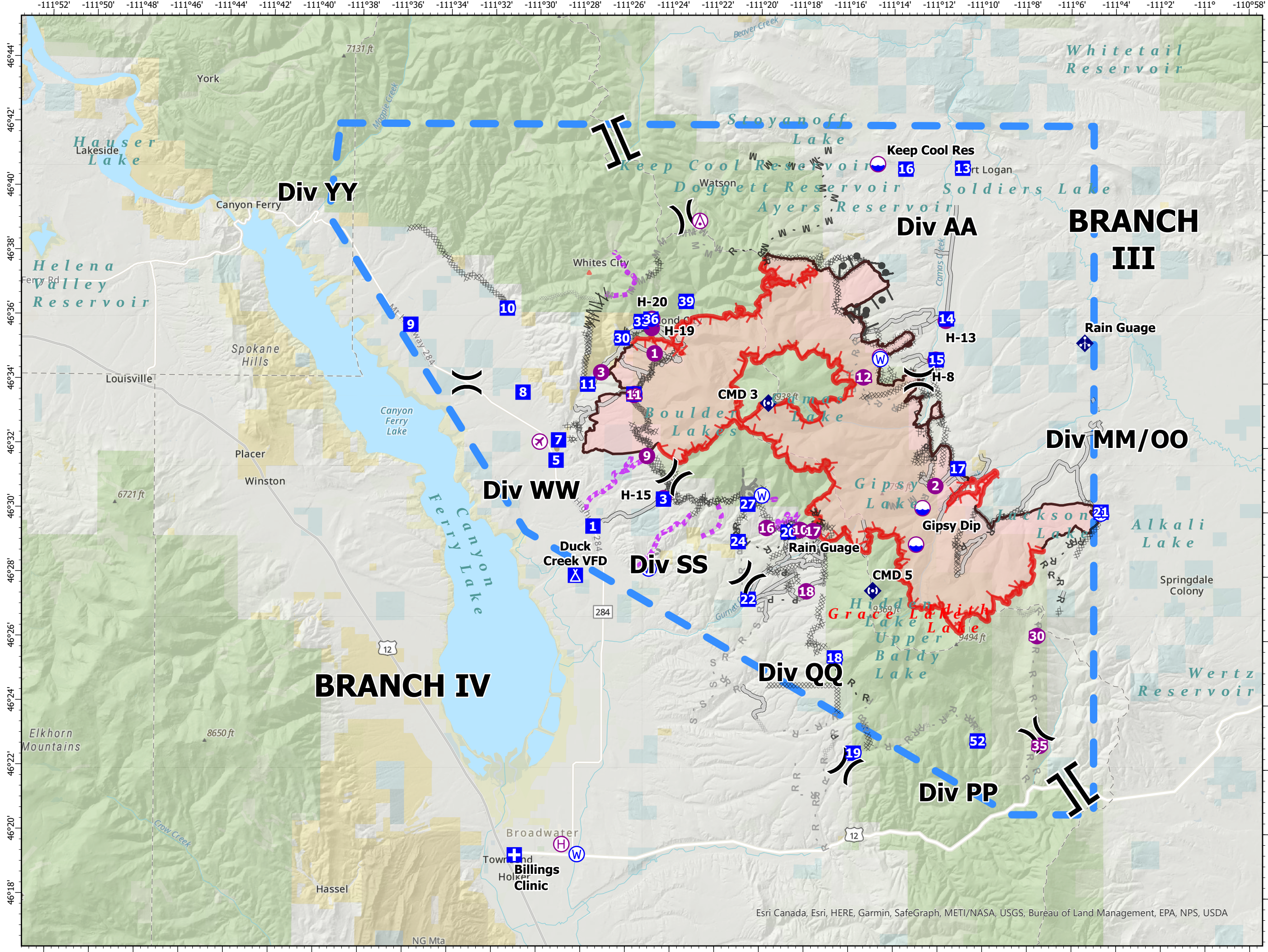
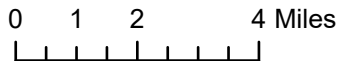
Approx 49,721 GIS Acres
@ 08/13 1615
Operational Shift
8/14/2021



- Aerial Hazard
- Airstrip or Airport
- Dip Site
- Helispot
- Helibase
- Division Break
- Branch Break
- Medical
- Incident Command Post
- Drop Point
- Camp
- Mobile Weather Unit
- Repeater
- Water Source
- Completed Burnout
- Completed Dozer Line
- Completed Fuel Break
- Completed Hand Line
- Completed Mixed Construction Line
- Completed Plow Line
- Completed Road as Line
- Planned Dozer Line
- Planned Mixed Construction Line
- Planned Road as Line
- Planned Secondary Line
- Access or Improved Road
- Other
- Road Repair
- Route
- Fire Edge
- Contained Line



8/14/2021 0924
Acres from IR
North American 1983 Datum. LatLong Grid



FC Point Type	Label	Comments	Latitude WGS84	Longitude WGS84	Elevation (Feet)
Aerial Hazard			46° 39.031' N	111° 22.768' W	
Airstrip or Airport		AIRPORT	46° 32.150' N	111° 29.933' W	
Camp	Duck Creek VFD	Duck Creek VFD	46° 28.004' N	111° 28.294' W	
Dip Site			46° 29.002' N	111° 12.988' W	
Dip Site			46° 34.823' N	111° 14.636' W	
Dip Site		Approved by HMGB	46° 35.950' N	111° 24.918' W	
Dip Site	Gipsy Dip		46° 30.134' N	111° 12.701' W	
Dip Site	Keep Cool Res		46° 40.817' N	111° 14.751' W	
Drop Point	1	Please approve and	46° 29.535' N	111° 27.517' W	
Drop Point	10		46° 36.291' N	111° 31.429' W	
Drop Point	11	Proposed	46° 33.943' N	111° 27.791' W	
Drop Point	12		46° 33.644' N	111° 25.710' W	
Drop Point	13	label as DP 13 as per	46° 40.696' N	111° 10.931' W	
Drop Point	14	move DP 14 as per	46° 36.014' N	111° 11.643' W	
Drop Point	15	DP 15 as per Divs	46° 34.744' N	111° 12.100' W	
Drop Point	16	Proposed	46° 40.665' N	111° 13.490' W	
Drop Point	17	Division MM	46° 31.364' N	111° 11.116' W	
Drop Point	18		46° 25.472' N	111° 16.641' W	
Drop Point	19	New Drop Point for Div	46° 22.516' N	111° 15.784' W	
Drop Point	20		46° 29.379' N	111° 18.732' W	
Drop Point	21	Would like this	46° 30.019' N	111° 04.674' W	
Drop Point	22		46° 27.285' N	111° 20.531' W	
Drop Point	24	Drop point for approval	46° 29.075' N	111° 20.985' W	
Drop Point	27		46° 30.237' N	111° 20.556' W	
Drop Point	3	Drop point for approval	46° 30.385' N	111° 24.352' W	
Drop Point	30	Proposed	46° 35.382' N	111° 26.253' W	
Drop Point	33	Proposed	46° 35.897' N	111° 25.386' W	
Drop Point	36	Proposed	46° 35.974' N	111° 24.961' W	
Drop Point	39	Proposed	46° 36.530' N	111° 23.371' W	
Drop Point	5	Proposed DP staging	46° 31.576' N	111° 29.194' W	
Drop Point	52		46° 22.906' N	111° 10.208' W	
Drop Point	7		46° 32.205' N	111° 29.088' W	

FC Point Type	Label	Comments	Latitude WGS84	Longitude WGS84	Elevation (Feet)
Drop Point	8		46° 33.682' N	111° 30.699' W	
Drop Point	9		46° 35.767' N	111° 35.773' W	
Helibase			46° 19.650' N	111° 28.853' W	3887
Helibase			46° 30.160' N	110° 54.472' W	
Helispot	1		46° 34.910' N	111° 24.784' W	
Helispot	10	Dust abatement	46° 29.444' N	111° 18.197' W	
Helispot	11		46° 33.615' N	111° 25.702' W	
Helispot	12		46° 34.192' N	111° 15.374' W	
Helispot	16		46° 29.502' N	111° 19.708' W	
Helispot	17		46° 29.410' N	111° 17.627' W	
Helispot	18	Needs improvement	46° 27.539' N	111° 17.916' W	
Helispot	2		46° 30.823' N	111° 12.131' W	
Helispot	3	No longer viable	46° 34.313' N	111° 27.186' W	
Helispot	30	North end of windy	46° 26.167' N	111° 07.549' W	8000
Helispot	35	South end of windy	46° 22.760' N	111° 07.424' W	6500
Helispot	4	per Tommy Barnes	46° 33.646' N	111° 25.687' W	
Helispot	9		46° 31.723' N	111° 25.105' W	
Helispot	H-13		46° 35.956' N	111° 11.677' W	
Helispot	H-15		46° 30.414' N	111° 24.341' W	
Helispot	H-19		46° 35.699' N	111° 24.920' W	
Helispot	H-20		46° 35.983' N	111° 24.899' W	
Helispot	H-8		46° 34.745' N	111° 12.129' W	
Medical		Mt View Medical Clinic	46° 32.877' N	110° 54.270' W	
Medical	Billings Clinic		46° 19.307' N	111° 30.959' W	
Repeater	CMD 3		46° 33.381' N	111° 19.650' W	
Repeater	CMD 5	Per Comm. 8/11	46° 27.564' N	111° 14.932' W	
Water Source		Draft site out of	46° 19.343' N	111° 28.162' W	
Water Source		Haynes ranch 4"	46° 28.226' N	111° 25.000' W	
Water Source		Teague Ranch	46° 34.762' N	111° 14.620' W	
Water Source		Creek that could be	46° 30.509' N	111° 19.927' W	
Water Source		Jackson Lake on Dalt	46° 29.973' N	111° 04.687' W	