

Woods Creek

Transportation Map

MT-HLF-000258



Operational Shift:
08/14 Day

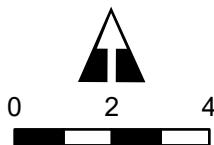
Approx. 48,770 GIS Acres
at 08/13 1615

- Airstrip or Airport
- Helispot
- Helibase
- Division Break
- Branch Break
- Incident Command Post
- Drop Point
- Camp
- Staging Area
- Fire Station
- Repeater
- Access or Improved Road
- Wildfire Daily Fire Perimeter
- Primary Route
- Secondary Route
- Controlled-access Highway
- Major Road
- Local Connecting Road
- Local Road
- 4WD
- Local Government
- State Government
- US Bureau of Land Management
- US Bureau of Reclamation
- US Forest Service
- Other US Government

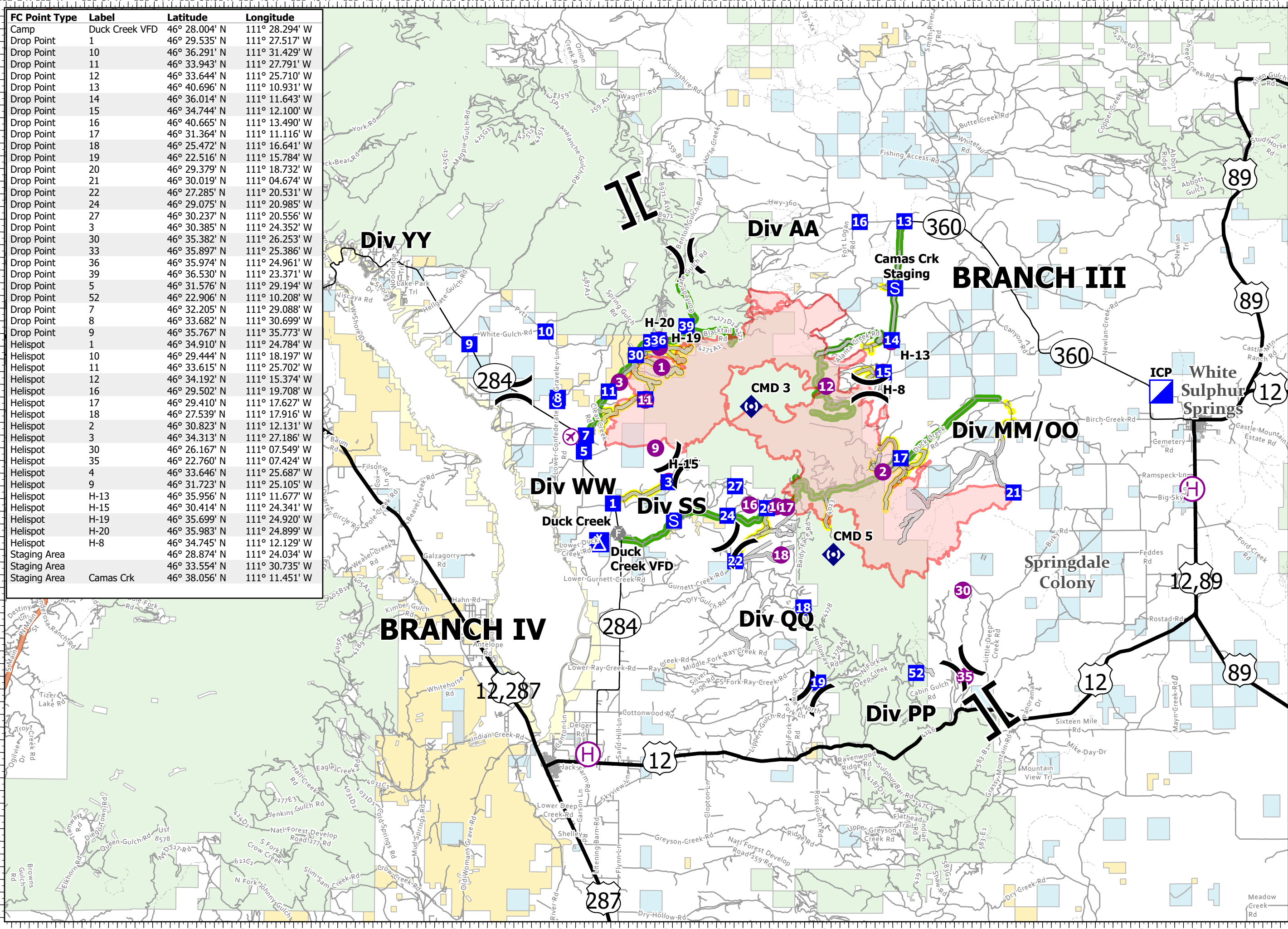
FC Point Type	Label	Latitude	Longitude
Camp	Duck Creek VFD	46° 28.004' N	111° 28.294' W
Drop Point	1	46° 29.535' N	111° 27.517' W
Drop Point	10	46° 36.291' N	111° 31.429' W
Drop Point	11	46° 33.943' N	111° 27.791' W
Drop Point	12	46° 33.644' N	111° 25.710' W
Drop Point	13	46° 40.696' N	111° 10.931' W
Drop Point	14	46° 36.014' N	111° 11.643' W
Drop Point	15	46° 34.744' N	111° 12.100' W
Drop Point	16	46° 40.665' N	111° 13.490' W
Drop Point	17	46° 31.364' N	111° 11.116' W
Drop Point	18	46° 25.472' N	111° 16.641' W
Drop Point	19	46° 22.516' N	111° 15.784' W
Drop Point	20	46° 29.379' N	111° 18.732' W
Drop Point	21	46° 30.019' N	111° 04.674' W
Drop Point	22	46° 27.285' N	111° 20.531' W
Drop Point	24	46° 29.075' N	111° 20.985' W
Drop Point	27	46° 30.237' N	111° 20.556' W
Drop Point	3	46° 30.385' N	111° 24.352' W
Drop Point	30	46° 35.382' N	111° 26.253' W
Drop Point	33	46° 35.897' N	111° 25.386' W
Drop Point	36	46° 35.974' N	111° 24.961' W
Drop Point	39	46° 36.530' N	111° 23.371' W
Drop Point	5	46° 31.576' N	111° 29.194' W
Drop Point	52	46° 22.906' N	111° 10.208' W
Drop Point	7	46° 32.205' N	111° 29.088' W
Drop Point	8	46° 33.682' N	111° 30.699' W
Drop Point	9	46° 35.767' N	111° 35.773' W
Helispot	1	46° 34.910' N	111° 24.784' W
Helispot	10	46° 29.444' N	111° 18.197' W
Helispot	11	46° 33.615' N	111° 25.702' W
Helispot	12	46° 34.192' N	111° 15.374' W
Helispot	16	46° 29.502' N	111° 19.708' W
Helispot	17	46° 29.410' N	111° 17.627' W
Helispot	18	46° 27.539' N	111° 17.916' W
Helispot	2	46° 30.823' N	111° 12.131' W
Helispot	3	46° 34.313' N	111° 27.186' W
Helispot	30	46° 26.167' N	111° 07.549' W
Helispot	35	46° 22.760' N	111° 07.424' W
Helispot	4	46° 33.646' N	111° 25.687' W
Helispot	9	46° 31.723' N	111° 25.105' W
Helispot	H-13	46° 35.956' N	111° 11.677' W
Helispot	H-15	46° 30.414' N	111° 24.341' W
Helispot	H-19	46° 35.699' N	111° 24.920' W
Helispot	H-20	46° 35.983' N	111° 24.899' W
Helispot	H-8	46° 34.745' N	111° 12.129' W
Staging Area		46° 28.874' N	111° 24.034' W
Staging Area		46° 33.554' N	111° 30.735' W
Staging Area	Camas Crk	46° 38.056' N	111° 11.451' W

46°25'N
46°23'N
46°21'N
46°19'N
46°17'N
46°15'N
46°13'N
46°11'N
46°09'N
46°07'N
46°05'N
46°03'N
46°01'N
46°00'N

112°1'W 111°58'W 111°55'W 111°52'W 111°49'W 111°46'W 111°43'W 111°40'W 111°37'W 111°34'W 111°31'W 111°28'W 111°25'W 111°22'W 111°19'W 111°16'W 111°13'W 111°10'W 111°07'W 111°04'W 111°01'W 110°58'W 110°55'W 110°52'W



Miles
RM IMT 1
8/13/2021 2146
Acres from IR
North American 1983 Datum. LatLong G



46°48'N
46°46'N
46°44'N
46°42'N
46°40'N
46°38'N
46°36'N
46°34'N
46°32'N
46°30'N
46°28'N
46°26'N
46°23'N
46°22'N
46°20'N
46°18'N
46°16'N
46°14'N