

Woods Creek Fire MT-HLF-258

Pilot Map

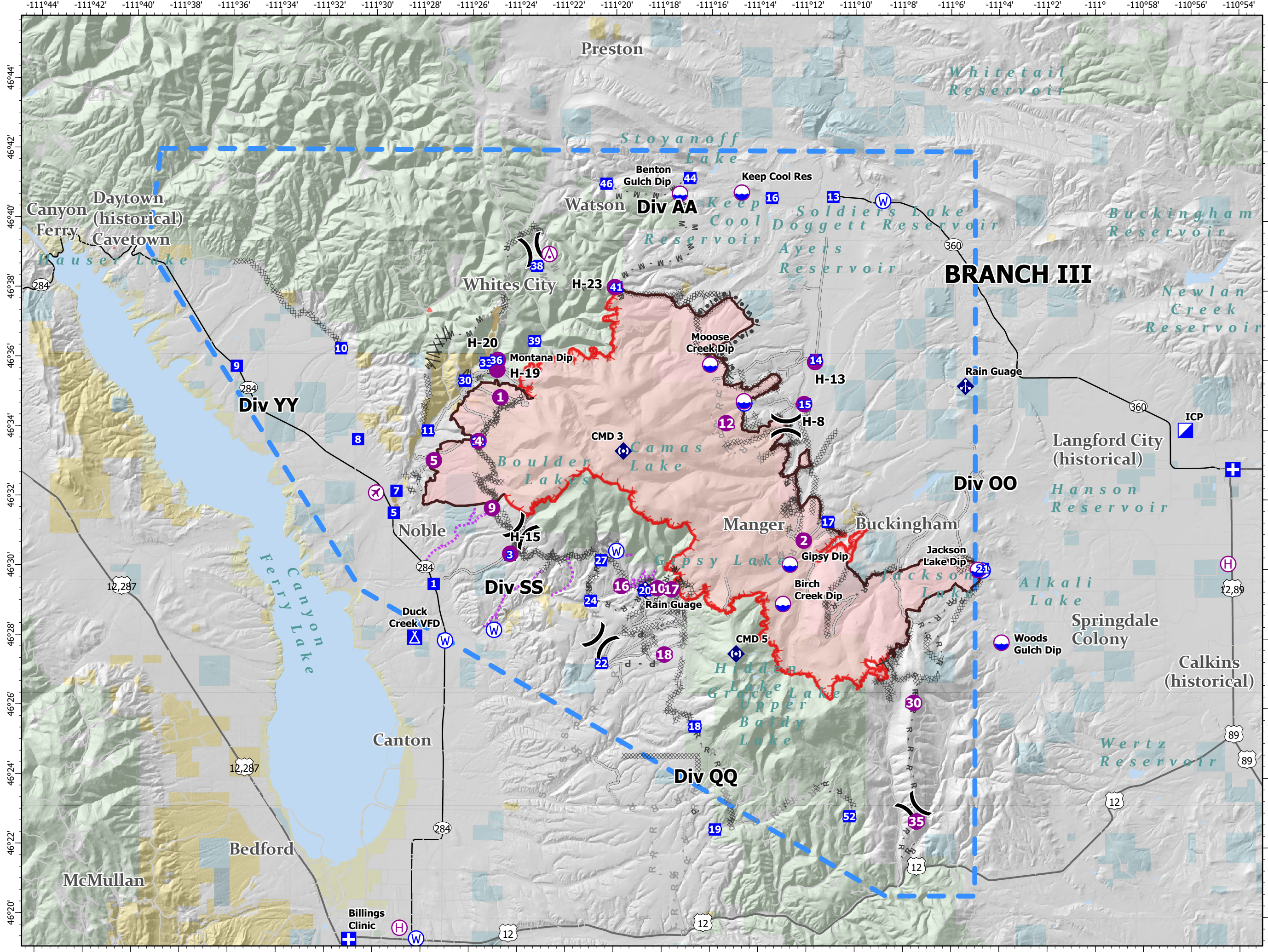
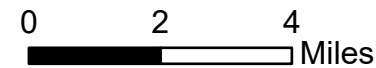
Approx 55,834 GIS Acres
@ 1938 8/16
Operational Shift
8/19/2021



- Aerial Hazard
- Airstrip or Airport
- Dip Site
- Helispot
- Helibase
- Division Break
- Medical
- Incident Command Post
- Drop Point
- Camp
- Mobile Weather Unit
- Repeater
- Water Source
- Completed Burnout
- Completed Dozer Line
- Completed Fuel Break
- Completed Hand Line
- Completed Mixed Construction Line
- Completed Plow Line
- Completed Road as Line
- Planned Dozer Line
- Planned Mixed Construction Line
- Planned Road as Line
- Planned Secondary Line
- Access or Improved Road
- Other
- Road Repair
- Route
- Fire Edge
- Contained Line
- Cities and Towns
- NHD Flowline



8/18/2021 1857
Acres from IR
North American 1983 Datum. LatLong Grid



| FC Point Type | Label | Comments | Latitude WGS84 | Longitude WGS84 | Elevation (Feet) |
|---------------------|------------------|-------------------------|----------------|-----------------|------------------|
| Aerial Hazard | | | 46° 39.031' N | 111° 22.768' W | |
| Airstrip or Airport | | AIRPORT | 46° 32.150' N | 111° 29.933' W | |
| Camp | Duck Creek VFD | Duck Creek VFD | 46° 28.004' N | 111° 28.294' W | |
| Dip Site | | | 46° 34.823' N | 111° 14.636' W | |
| Dip Site | | Approved by HMGB, | 46° 35.950' N | 111° 24.918' W | |
| Dip Site | Benton Gulch Dip | | 46° 40.780' N | 111° 17.330' W | |
| Dip Site | Birch Creek Dip | | 46° 29.002' N | 111° 12.988' W | |
| Dip Site | Gipsy Dip | | 46° 30.134' N | 111° 12.701' W | |
| Dip Site | Jackson Lake Dip | Jackson Lake Dip | 46° 29.988' N | 111° 04.888' W | |
| Dip Site | Keep Cool Res | | 46° 40.817' N | 111° 14.751' W | |
| Dip Site | Montana Dip | Pumpkin | 46° 35.950' N | 111° 24.919' W | |
| Dip Site | Moosoe Creek Dip | Moose Creek Dip | 46° 35.872' N | 111° 16.046' W | |
| Dip Site | Woods Gulch Dip | | 46° 27.900' N | 111° 03.901' W | |
| Drop Point | 1 | Please approve and | 46° 29.535' N | 111° 27.517' W | |
| Drop Point | 10 | | 46° 36.291' N | 111° 31.429' W | |
| Drop Point | 11 | Proposed | 46° 33.943' N | 111° 27.791' W | |
| Drop Point | 12 | | 46° 33.644' N | 111° 25.710' W | |
| Drop Point | 13 | label as DP 13 as per | 46° 40.696' N | 111° 10.931' W | |
| Drop Point | 14 | move DP 14 as per | 46° 36.014' N | 111° 11.643' W | |
| Drop Point | 15 | DP 15 as per Divs | 46° 34.744' N | 111° 12.100' W | |
| Drop Point | 16 | Proposed | 46° 40.665' N | 111° 13.490' W | |
| Drop Point | 17 | Division MM | 46° 31.364' N | 111° 11.116' W | |
| Drop Point | 18 | | 46° 25.472' N | 111° 16.641' W | |
| Drop Point | 19 | New Drop Point for Div | 46° 22.516' N | 111° 15.784' W | |
| Drop Point | 20 | | 46° 29.379' N | 111° 18.732' W | |
| Drop Point | 21 | Would like this | 46° 30.019' N | 111° 04.674' W | |
| Drop Point | 22 | | 46° 27.285' N | 111° 20.531' W | |
| Drop Point | 24 | Drop point for approval | 46° 29.075' N | 111° 20.985' W | |
| Drop Point | 27 | | 46° 30.237' N | 111° 20.556' W | |
| Drop Point | 3 | Drop point for approval | 46° 30.385' N | 111° 24.352' W | |
| Drop Point | 30 | Proposed | 46° 35.382' N | 111° 26.253' W | |
| Drop Point | 33 | Proposed | 46° 35.897' N | 111° 25.386' W | |
| Drop Point | 36 | Proposed | 46° 35.974' N | 111° 24.961' W | |
| Drop Point | 38 | | 46° 38.688' N | 111° 23.283' W | |
| Drop Point | 39 | Proposed | 46° 36.530' N | 111° 23.371' W | |
| Drop Point | 41 | | 46° 38.084' N | 111° 19.970' W | |
| Drop Point | 44 | | 46° 41.233' N | 111° 16.905' W | |

| FC Point Type | Label | Comments | Latitude WGS84 | Longitude WGS84 | Elevation (Feet) |
|---------------|-----------------|-------------------------|----------------|-----------------|------------------|
| Drop Point | 46 | new drop point | 46° 41.059' N | 111° 20.403' W | |
| Drop Point | 5 | Proposed DP staging | 46° 31.576' N | 111° 29.194' W | |
| Drop Point | 52 | | 46° 22.906' N | 111° 10.208' W | |
| Drop Point | 7 | | 46° 32.205' N | 111° 29.088' W | |
| Drop Point | 8 | | 46° 33.682' N | 111° 30.699' W | |
| Drop Point | 9 | | 46° 35.767' N | 111° 35.773' W | |
| Helibase | | | 46° 19.650' N | 111° 28.853' W | 3887 |
| Helibase | | | 46° 30.160' N | 110° 54.472' W | |
| Helispot | 1 | | 46° 34.910' N | 111° 24.784' W | |
| Helispot | 10 | Dust abatement | 46° 29.444' N | 111° 18.197' W | |
| Helispot | 12 | | 46° 34.192' N | 111° 15.374' W | |
| Helispot | 16 | | 46° 29.502' N | 111° 19.708' W | |
| Helispot | 17 | | 46° 29.410' N | 111° 17.627' W | |
| Helispot | 18 | Needs improvement | 46° 27.539' N | 111° 17.916' W | |
| Helispot | 2 | | 46° 30.823' N | 111° 12.131' W | |
| Helispot | 30 | North end of windy | 46° 26.167' N | 111° 07.549' W | 8000 |
| Helispot | 35 | South end of windy | 46° 22.760' N | 111° 07.424' W | 6500 |
| Helispot | 4 | per Tommy Barnes | 46° 33.646' N | 111° 25.687' W | |
| Helispot | 5 | Type II, III | 46° 33.087' N | 111° 27.541' W | 4600 |
| Helispot | 9 | | 46° 31.723' N | 111° 25.105' W | |
| Helispot | H-13 | | 46° 35.956' N | 111° 11.677' W | |
| Helispot | H-15 | | 46° 30.414' N | 111° 24.341' W | |
| Helispot | H-19 | | 46° 35.699' N | 111° 24.920' W | |
| Helispot | H-20 | | 46° 35.983' N | 111° 24.899' W | |
| Helispot | H-23 | Type II, III | 46° 38.090' N | 111° 20.033' W | 6700 |
| Helispot | H-8 | | 46° 34.745' N | 111° 12.129' W | |
| Medical | | Mt View Medical Clinic | 46° 32.877' N | 110° 54.270' W | |
| Medical | Billings Clinic | | 46° 19.307' N | 111° 30.959' W | |
| Repeater | CMD 3 | | 46° 33.381' N | 111° 19.650' W | |
| Repeater | CMD 5 | Per Comm. 8/11 | 46° 27.564' N | 111° 14.932' W | |
| Water Source | | Draft site out of | 46° 19.343' N | 111° 28.162' W | |
| Water Source | | Haynes ranch 4" | 46° 28.226' N | 111° 25.000' W | |
| Water Source | | Teague Ranch | 46° 34.762' N | 111° 14.620' W | |
| Water Source | | Creek that could be | 46° 30.509' N | 111° 19.927' W | |
| Water Source | | Jackson Lake on Dalt | 46° 29.973' N | 111° 04.687' W | |
| Water Source | | | 46° 40.590' N | 111° 08.856' W | |
| Water Source | | Stand Pipe on east side | 46° 27.912' N | 111° 27.029' W | |