

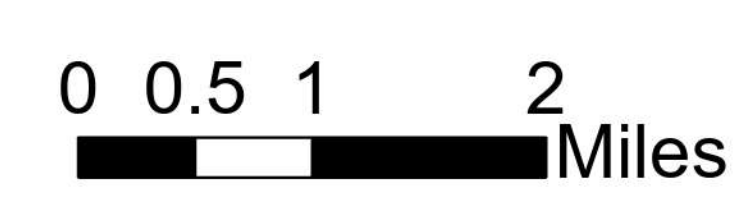
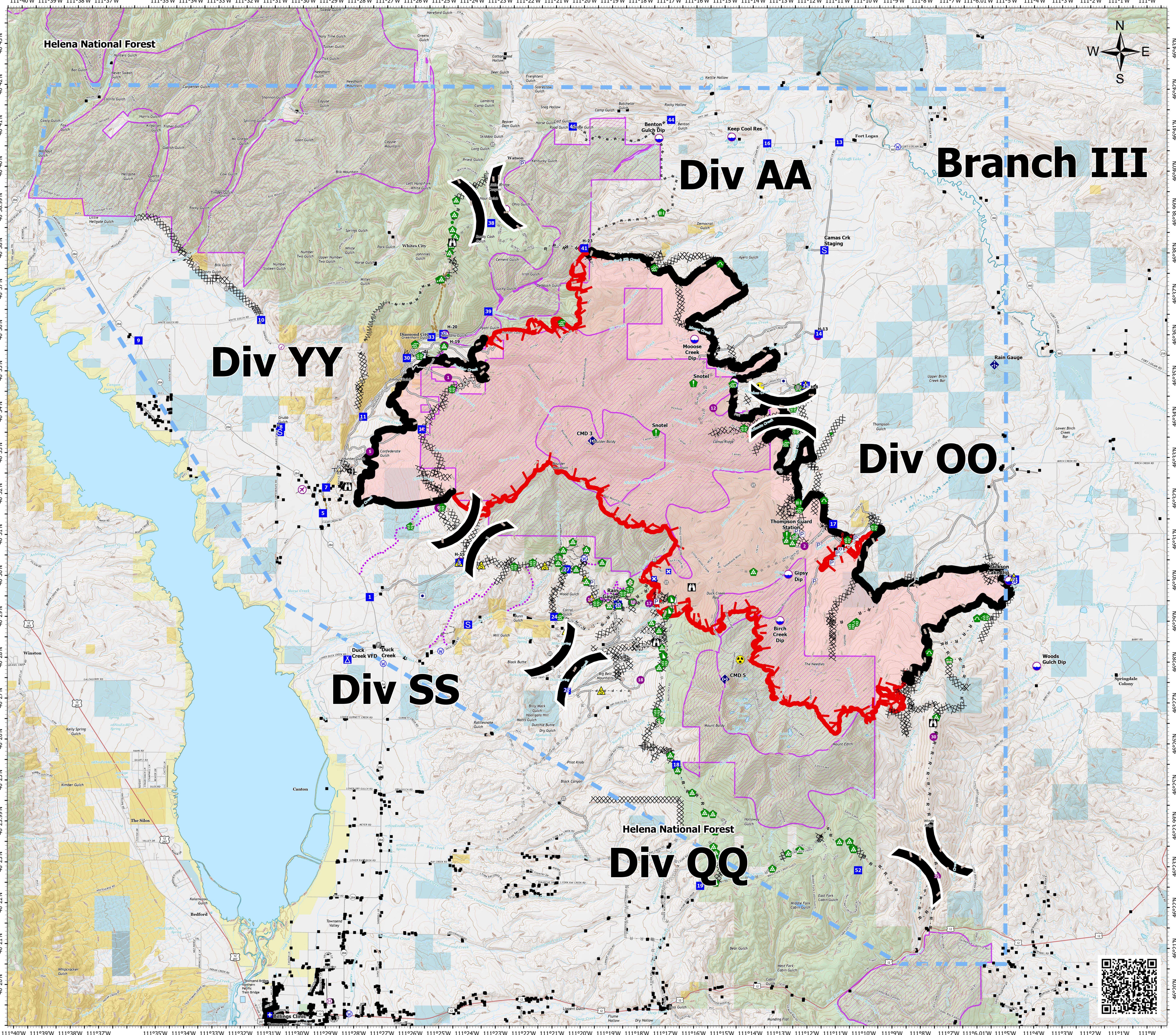
# Woods Creek Fire MT-HLF-258

## Briefing Map

Approx. 55,834 GIS Acres  
@ 08/16/2021 1938 hrs  
Operational Shift  
8/20/2021



- Structures
- Aerial Hazard
- Airstrip or Airport
- Check Point
- Dip Site
- Helispot
- Helibase
- Division Break
- Medical
- Drop Point
- Closure
- Camp
- Staging Area
- Lookout
- Hot Spot - Spot Fire
- Other
- Landmark
- Gate
- Fire Station
- Bridge
- Water Development or Draft Site
- Stream Crossing
- Resource Location
- Repair Point
- Landing or Log Deck
- Fence - Cut/Damaged
- Dozer Push
- Culvert
- Mobile Weather Unit
- Internet Access
- Repeater
- Safety Zone
- Hazard
- Water Source
- Trail
- Secondary Hwy
- Local Connector
- Local Road
- 4WD
- Completed Burnout
- Completed Dozer Line
- Completed Fuel Break
- Completed Hand Line
- Completed Mixed Construction Line
- Completed Plow Line
- Completed Road as Line
- Planned Dozer Line
- Planned Mixed Construction Line
- Planned Road as Line
- Planned Secondary Line
- Access or Improved Road
- Other
- Road Repair
- Route
- Temporary Flight Restriction
- Fire Edge
- Contained Line
- Wildfire Daily Fire Perimeter
- Roadless Area



RMIMT Type 1 GIS  
Date Exported: 8/19/2021 4:55 PM  
North American 1983 Datum, LatLong Grid

