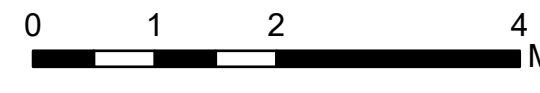


Air Operations All Fires Overview

Operational Period 8/29/2021

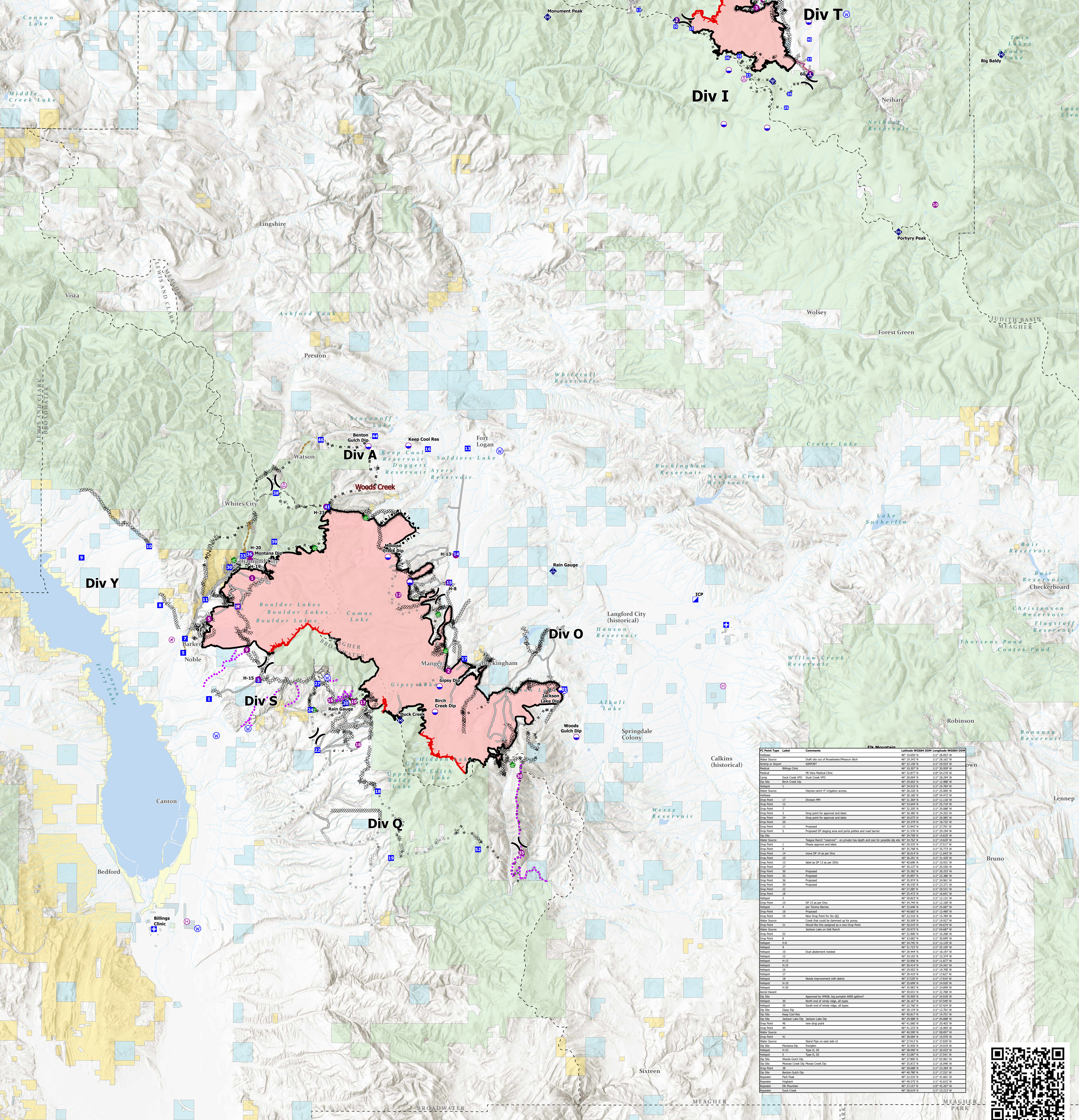
Divide Complex: Balsinger MT-HLF-005079
8,584 Acres @ 1547 8/20
Woods Creek - MT-HLF-000258
55,411 Acres @ 2143 8/27



FC Point Type	Label	Comments	Latitude WGS84 UTM	Longitude WGS84 UTM	Elevation (Feet)
Camp	Show Down		46° 50.500' N	110° 41.824' W	59,500
Dip Site			46° 50.627' N	110° 48.869' W	59,627
Dip Site			46° 53.095' N	110° 54.387' W	59,095
Dip Site		Dillon Park Pumping Dip Site - (26,000 gallon pump)	46° 54.930' N	110° 53.379' W	54,930
Dip Site		Iron Mines Dip (2) 6,000 gallon pumps	46° 57.490' N	110° 54.059' W	57,490
Dip Site		Drop Point 10	47° 00.930' N	110° 53.694' W	50,930
Dip Point	11	Drop Point 11, Balsinger trail parking area. Good parking area in the back, with cell phone reception.	46° 58.110' N	110° 53.378' W	58,110
Dip Point	13	Drop point 13	47° 00.162' N	110° 50.894' W	50,162
Dip Point	20	Drop Point 20	46° 58.038' N	110° 54.157' W	58,038
Dip Point	22	Drop Point 22, wide "pullout" area at trail on bars, limited parking. Weak cell phone reception.	46° 57.261' N	110° 53.379' W	57,261
Dip Point	23	Drop Point 23, also a med size battery zone S of DP.	46° 57.261' N	110° 53.378' W	57,261
Dip Point	25	Drop Point 25, per lead 10/10/2010 there are vehicles out of large park, or "Fusion" SW of DP. Many arch sites found in meadow.	46° 55.821' N	110° 50.337' W	55,821
Dip Point	30		46° 59.427' N	110° 57.905' W	59,427
Dip Point	35		46° 58.431' N	110° 53.238' W	58,431
Dip Point	37		46° 57.971' N	110° 48.825' W	57,971
Dip Point	40		46° 58.847' N	110° 48.824' W	58,847
Dip Point	50	Label as DP50	47° 03.097' N	110° 48.143' W	53,097
Dip Point	52	New drop point	47° 02.600' N	110° 50.020' W	52,600
Dip Point	54	Label as DP54	47° 03.477' N	110° 48.003' W	53,477
Dip Point	55	Potential DP 55	47° 05.037' N	110° 50.572' W	55,037
Helipoint	1	Forest West Side	46° 57.807' N	110° 48.778' W	7012
Helipoint	10		46° 51.497' N	110° 48.704' W	51,497
Helipoint	2		46° 59.112' N	110° 57.430' W	7500
Helipoint	3		47° 00.250' N	110° 52.250' W	5863
Helipoint	4		47° 00.615' N	110° 51.805' W	5779
Repeater	Big Baldy		46° 58.144' N	110° 36.393' W	58,144
Repeater	Monument Peak		46° 59.840' N	110° 48.814' W	59,840
Repeater	Porphyry Peak		46° 50.293' N	110° 43.000' W	50,293
Water Source		Gravelly sock for gravel system around Barn and Tree Colter	46° 50.963' N	110° 46.417' W	50,963
Water Source	Camp Rotary		47° 01.680' N	110° 46.722' W	51,680

Land Ownership

- Local Government
- State Government
- US Bureau of Land Management
- US Bureau of Reclamation
- US Dept of Agriculture
- US Dept of Defense
- US Fish and Wildlife Service
- US Forest Service
- Other US Government



FC Point Type	Label	Comments	Latitude WGS84 UTM	Longitude WGS84 UTM	Elevation (Feet)
Water Source		Drift site out of Broadwater Reservoir ditch	46° 19.243' N	110° 28.162' W	49,243
Water Source		ADPNET	46° 22.028' N	110° 29.258' W	52,028
Water Source		Billings Clinic	46° 19.102' N	110° 30.509' W	49,102
Medical		18. Vets Medical Clinic	46° 32.877' N	110° 54.270' W	32,877
Water Source		Drop point for approval and label	46° 29.602' N	110° 13.989' W	29,602
Dip Site		Beck Creek Dip	46° 28.282' N	110° 25.807' W	28,282
Water Source		Haynes search #1 Engstrom access	46° 28.282' N	110° 25.807' W	28,282
Dip Point	17	Drop Point 17	46° 31.284' N	110° 11.140' W	31,284
Dip Point	18	Drop point for approval and label	46° 33.848' N	110° 29.258' W	33,848
Dip Point	7	Proposed	46° 32.285' N	110° 29.888' W	32,285
Dip Point	20	Proposed	46° 29.539' N	110° 18.750' W	29,539
Dip Point	11	Proposed	46° 31.526' N	110° 29.294' W	31,526
Dip Point	24	Proposed	46° 29.053' N	110° 26.985' W	29,053
Dip Point	25	Proposed	46° 29.539' N	110° 18.750' W	29,539
Dip Point	31	Proposed	46° 31.526' N	110° 29.294' W	31,526
Dip Point	32	Proposed	46° 29.053' N	110° 26.985' W	29,053
Water Source		Thayer Ranch "reservoir" - on private land search and see for possible dip site	46° 34.742' N	110° 14.827' W	34,742
Dip Point	5	Phone location and label	46° 34.742' N	110° 14.827' W	34,742
Dip Point	9	Phone location and label	46° 35.748' N	110° 25.772' W	35,748
Dip Point	14	Phone location and label	46° 30.248' N	110° 14.827' W	30,248
Dip Point	10	Phone location and label	46° 30.248' N	110° 14.827' W	30,248
Dip Point	12	Phone location and label	46° 30.248' N	110° 14.827' W	30,248
Dip Point	27	Phone location and label	46° 30.248' N	110° 14.827' W	30,248
Dip Point	33	Phone location and label	46° 30.248' N	110° 14.827' W	30,248
Dip Point	34	Phone location and label	46° 30.248' N	110° 14.827' W	30,248
Dip Point	35	Phone location and label	46° 30.248' N	110° 14.827' W	30,248
Dip Point	36	Phone location and label	46° 30.248' N	110° 14.827' W	30,248
Dip Point	37	Phone location and label	46° 30.248' N	110° 14.827' W	30,248
Dip Point	22	Phone location and label	46° 27.802' N	110° 15.512' W	27,802
Dip Point	16	Phone location and label	46° 24.248' N	110° 14.827' W	24,248
Water Source		DP 15, 16 per DP	46° 30.823' N	110° 13.131' W	30,823
Water Source		per Thayer Ranch	46° 33.446' N	110° 23.487' W	33,446
Dip Point	6	Phone location and label	46° 33.446' N	110° 23.487' W	33,446
Dip Point	19	Phone location and label	46° 22.516' N	110° 15.794' W	22,516
Dip Point	38	Phone location and label	46° 22.516' N	110° 15.794' W	22,516
Dip Point	23	Phone location and label	46° 22.516' N	110° 15.794' W	22,516
Water Source		Creek flow could be diverted up to dip point	46° 22.516' N	110° 15.794' W	22,516
Dip Point	21	Phone location and label	46° 30.823' N	110° 13.131' W	30,823
Water Source		Jackson Lake on Oak Ranch	46° 29.977' N	110° 14.849' W	29,977
Dip Point	52	Phone location and label	46° 29.977' N	110° 14.849' W	29,977
Dip Point	39	Phone location and label	46° 31.462' N	110° 25.268' W	31,462
Dip Point	40	Phone location and label	46° 31.462' N	110° 25.268' W	31,462
Dip Point	41	Phone location and label	46° 31.462' N	110° 25.268' W	31,462
Dip Point	42	Phone location and label	46° 31.462' N	110° 25.268' W	31,462
Dip Point	43	Phone location and label	46° 31.462' N	110° 25.268' W	31,462
Dip Point	44	Phone location and label	46° 31.462' N	110° 25.268' W	31,462
Dip Point	45	Phone location and label	46° 31.462' N	110° 25.268' W	31,462
Dip Point	46	Phone location and label	46° 31.462' N	110° 25.268' W	31,462
Dip Point	47	Phone location and label	46° 31.462' N	110° 25.268' W	31,462
Dip Point	48	Phone location and label	46° 31.462' N	110° 25.268' W	31,462
Dip Point	49	Phone location and label	46° 31.462' N	110° 25.268' W	31,462
Dip Point	50	Phone location and label	46° 31.462' N	110° 25.268' W	31,462
Dip Point	51	Phone location and label	46° 31.462' N	110° 25.268' W	31,462
Dip Point	53	Phone location and label	46° 31.462' N	110° 25.268' W	31,462
Dip Point	54	Phone location and label	46° 31.462' N	110° 25.268' W	31,462
Dip Point	55	Phone location and label	46° 31.462' N	110° 25.268' W	31,462
Dip Point	56	Phone location and label	46° 31.462' N	110° 25.268' W	31,462
Dip Point	57	Phone location and label	46° 31.462' N	110° 25.268' W	31,462
Dip Point	58	Phone location and label	46° 31.462' N	110° 25.268' W	31,462
Dip Point	59	Phone location and label	46° 31.462' N	110° 25.268' W	31,462
Dip Point	60	Phone location and label	46° 31.462' N	110° 25.268' W	31,462
Dip Point	61	Phone location and label	46° 31.462' N	110° 25.268' W	31,462
Dip Point	62	Phone location and label	46° 31.462' N	110° 25.268' W	31,462
Dip Point	63	Phone location and label	46° 31.462' N	110° 25.268' W	31,462
Dip Point	64	Phone location and label	46° 31.462' N	110° 25.268' W	31,462
Dip Point	65	Phone location and label	46° 31.462' N	110° 25.268' W	31,462
Dip Point	66	Phone location and label	46° 31.462' N	110° 25.268' W	31,462
Dip Point	67	Phone location and label	46° 31.462' N	110° 25.268' W	31,462
Dip Point	68	Phone location and label	46° 31.462' N	110° 25.268' W	31,462
Dip Point	69	Phone location and label	46° 31.462' N	110° 25.268' W	31,462
Dip Point	70	Phone location and label	46° 31.462' N	110° 25.268' W	31,462
Dip Point	71	Phone location and label	46° 31.462' N	110° 25.268' W	31,462
Dip Point	72	Phone location and label	46° 31.462' N	110° 25.268' W	31,462
Dip Point	73	Phone location and label	46° 31.462' N	110° 25.268' W	31,462
Dip Point	74	Phone location and label	46° 31.462' N	110° 25.268' W	31,462
Dip Point	75	Phone location and label	46° 31.462' N	110° 25.268' W	31,462
Dip Point	76	Phone location and label	46° 31.462' N	110° 25.268' W	31,462
Dip Point	77	Phone location and label	46° 31.462' N	110° 25.268' W	31,462
Dip Point	78	Phone location and label	46° 31.462' N	110° 25.268' W	31,462
Dip Point	79	Phone location and label	46° 31.462' N	110° 25.268' W	31,462
Dip Point	80	Phone location and label	46° 31.462' N	110° 25.268' W	31,462
Dip Point	81	Phone location and label	46° 31.462' N	110° 25.268' W	31,462
Dip Point	82	Phone location and label	46° 31.462' N	110° 25.268' W	31,462
Dip Point	83	Phone location and label	46° 31.462' N	110° 25.268' W	31,462
Dip Point	84	Phone location and label	46° 31.462' N	110° 25.268' W	31,462
Dip Point	85	Phone location and label	46° 31.462' N	110° 25.268' W	31,462
Dip Point	86	Phone location and label	46° 31.462' N	110° 25.268' W	31,462
Dip Point	87	Phone location and label	46° 31.462' N	110° 25.268' W	31,462
Dip Point	88	Phone location and label	46° 31.462' N	110° 25.268' W	31,462
Dip Point	89	Phone location and label	46° 31.462' N	110° 25.268' W	31,462
Dip Point	90	Phone location and label	46° 31.462' N	110° 25.268' W	31,462
Dip Point	91	Phone location and label	46° 31.462' N	110° 25.268' W	31,462
Dip Point	92	Phone location and label	46° 31.462' N	110° 25.268' W	31,462
Dip Point	93	Phone location and label	46° 31.462' N	110° 25.268' W	31,462
Dip Point	94	Phone location and label	46° 31.462' N	110° 25.268' W	31,462
Dip Point	95	Phone location and label	46° 31.462' N	110° 25.268' W	31,462
Dip Point	96	Phone location and label	46° 31.462' N	110° 25.268' W	31,462
Dip Point	97	Phone location and label	46° 31.462' N	110° 25.268' W	31,462
Dip Point	98	Phone location and label	46° 31.462' N	110° 25.268' W	31,462
Dip Point	99	Phone location and label	46° 31.462' N	110° 25.268' W	31,462
Dip Point	100	Phone location and label	46° 31.462' N	110° 25.268' W	31,462

