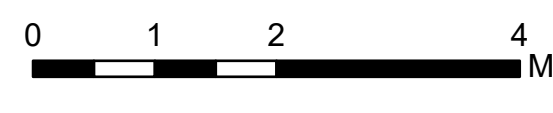


Air Operations All Fires Overview

Operational Period 8/30/2021

Divide Complex: Balsinger MT-HLF-005079
8,584 Acres @ 1547 8/20
Woods Creek - MT-HLF-000258
55,411 Acres @ 2143 8/27



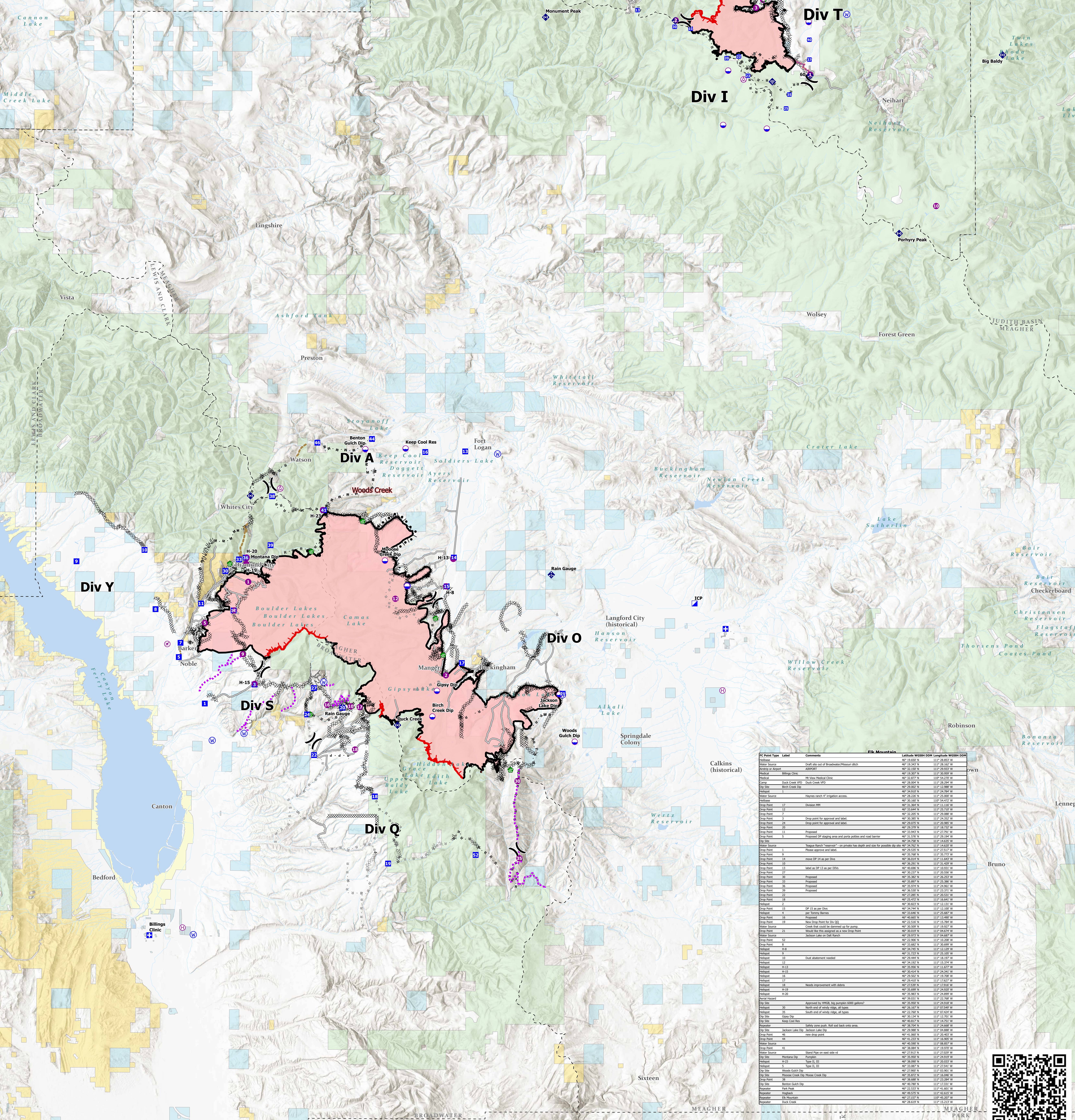
FC Point Type	Label	Comments	Latitude WGS84 UTM	Longitude WGS84 UTM	Elevation (Feet)
Camp	Show Down		46° 50.500' N	110° 41.824' W	5627
Dip Site			46° 50.627' N	110° 48.869' W	5627
Dip Site			46° 53.995' N	110° 54.378' W	5627
Dip Site		Dillon Park Pumping Dip Site - (26,000 gallon pump)	46° 54.930' N	110° 54.378' W	5627
Dip Site		Iron Mines Dip (2) 6,000 gallon pump	46° 57.490' N	110° 54.059' W	5627
Dip Site		Drop Point 10	47° 00.932' N	110° 55.694' W	5627
Dip Point	11	Drop Point 11: Balsinger trail parking area. Good parking area in the back, with cell phone reception.	46° 58.110' N	110° 54.973' W	5627
Dip Point	13	Drop Point 13	47° 00.162' N	110° 59.894' W	5627
Dip Point	20	Drop Point 20	46° 58.038' N	110° 54.157' W	5627
Dip Point	22	Drop Point 22: DP 22, wide "pullout" area at trail on bars, limited parking. Weak cell phone reception.	46° 57.261' N	110° 52.788' W	5627
Dip Point	23	Drop Point 23: DP 23, also a med size parking area.	46° 57.261' N	110° 52.788' W	5627
Dip Point	25	Drop Point 25: per lead (P3) keep all vehicles out of large park, or "Pawnee" SW of Fawcett SW of Fawcett. Many arch sites found in moose.	46° 55.821' N	110° 50.337' W	5627
Dip Point	30	Drop Point 30	46° 59.427' N	110° 57.905' W	5627
Dip Point	35	Drop Point 35	46° 58.431' N	110° 53.238' W	5627
Dip Point	37	Drop Point 37	46° 57.971' N	110° 49.825' W	5627
Dip Point	40	Drop Point 40	46° 58.887' N	110° 48.824' W	5627
Dip Point	50	Drop Point 50	47° 02.097' N	110° 56.143' W	5627
Dip Point	52	Drop Point 52	47° 02.660' N	110° 55.020' W	5627
Dip Point	54	Drop Point 54	47° 03.477' N	110° 48.003' W	5627
Dip Point	55	Drop Point 55	47° 05.037' N	110° 56.572' W	5627
Helipoint	1	Helipoint 1	46° 52.827' N	110° 48.778' W	7012
Helipoint	10	Helipoint 10	46° 51.497' N	110° 48.704' W	5627
Helipoint	2	Helipoint 2	46° 59.112' N	110° 57.430' W	7500
Helipoint	3	Helipoint 3	47° 00.250' N	110° 52.250' W	5863
Helipoint	4	Helipoint 4	47° 00.615' N	110° 51.805' W	5779
Repeater	Big Baldy	Repeater	46° 58.144' N	110° 36.393' W	5627
Repeater	Monument Peak	Repeater	46° 59.862' N	110° 45.814' W	5627
Repeater	Porphyry Peak	Repeater	46° 59.293' N	110° 43.000' W	5627
Water Source		Gravelly sock for gravel system around barn and Tree Colter	46° 59.963' N	110° 46.417' W	5627
Water Source	Camp Rotary		47° 01.680' N	110° 46.732' W	5627

- Aerial Hazard
- Strip or Airport
- Dip Site
- Helipoint
- Helibase
- + Medical
- + Incident Command Post
- + Drop Point
- + Water Development or Draft Site
- + Mobile Weather Unit
- + Internet Access
- + Repeater
- + Water Source
- + Completed Burnout
- + Completed Fuel Break
- + Completed Hand Line
- + Completed Mixed Construction Line
- + Completed Flow Line
- + Completed Road as Line

- Planned Dozer Line
- Planned Mixed Construction Line
- Planned Road as Line
- Planned Secondary Line
- Access or Improved Road
- Other
- Road Repair
- Fire Edge
- Contained Line
- Wildfire Daily Fire Perimeter
- Stream
- Ponds/Lakes
- County

Land Ownership

- Local Government
- State Government
- US Bureau of Land Management
- US Bureau of Reclamation
- US Dept of Agriculture
- US Dept of Defense
- US Fish and Wildlife Service
- US Forest Service
- Other US Government



FC Point Type	Label	Comments	Latitude WGS84 UTM	Longitude WGS84 UTM	Elevation (Feet)
Water Source	Crut. site, out of Broadwater Reservoir ditch		46° 19.243' N	110° 28.352' W	5627
Water Source	ADPPT		46° 22.282' N	110° 29.228' W	5627
Medical	Billings Clinic		46° 18.102' N	110° 35.959' W	5627
Medical	18, Vasa Medical Clinic		46° 32.877' N	110° 54.270' W	5627
Drop Site	Duck Creek VTD	Duck Creek VTD	46° 29.662' N	110° 13.988' W	5627
Drop Site	Bark Creek Dip		46° 29.292' N	110° 25.897' W	5627
Water Source		Haystack search #1 - Engstrom access	46° 28.282' N	110° 25.897' W	5627
Dip Point	12	Drop Point 12	46° 31.384' N	110° 13.135' W	5627
Dip Point	17	Drop Point 17	46° 31.384' N	110° 13.135' W	5627
Dip Point	7	Drop Point 7	46° 32.285' N	110° 29.888' W	5627
Dip Point	20	Drop Point 20	46° 29.292' N	110° 25.897' W	5627
Dip Point	11	Proposed	46° 31.576' N	110° 29.294' W	5627
Dip Point	5	Proposed	46° 31.576' N	110° 14.820' W	5627
Water Source		Trapper Ranch "reservoir" - on prairie has depth and stem for possible dip site	46° 34.762' N	110° 14.820' W	5627
Dip Point	1	Proposed	46° 35.242' N	110° 27.012' W	5627
Dip Point	9	Proposed	46° 35.242' N	110° 27.012' W	5627
Dip Point	14	Proposed	46° 36.143' N	110° 14.820' W	5627
Dip Point	10	Proposed	46° 36.243' N	110° 14.820' W	5627
Dip Point	27	Proposed	46° 30.272' N	110° 25.558' W	5627
Dip Point	35	Proposed	46° 29.292' N	110° 25.897' W	5627
Dip Point	36	Proposed	46° 29.292' N	110° 25.897' W	5627
Dip Point	37	Proposed	46° 30.272' N	110° 25.558' W	5627
Dip Point	38	Proposed	46° 30.272' N	110° 25.558' W	5627
Dip Point	22	Proposed	46° 27.282' N	110° 13.988' W	5627
Dip Point	18	Proposed	46° 28.282' N	110° 13.988' W	5627
Water Source		DP 15, on per dip	46° 30.821' N	110° 13.135' W	5627
Water Source		per Tennyson Dam	46° 33.446' N	110° 23.487' W	5627
Water Source		Drop Point 19	46° 22.516' N	110° 15.794' W	5627
Water Source		Creek flow could be diverted up to drop point	46° 22.516' N	110° 15.794' W	5627
Water Source		Drop Point 23	46° 30.272' N	110° 25.558' W	5627
Water Source		Drop Point 34	46° 29.292' N	110° 25.897' W	5627
Water Source		Drop Point 41	46° 29.292' N	110° 25.897' W	5627
Water Source		Drop Point 42	46° 29.292' N	110° 25.897' W	5627
Water Source		Drop Point 43	46° 29.292' N	110° 25.897' W	5627
Water Source		Drop Point 44	46° 29.292' N	110° 25.897' W	5627
Water Source		Drop Point 45	46° 29.292' N	110° 25.897' W	5627
Water Source		Drop Point 46	46° 29.292' N	110° 25.897' W	5627
Water Source		Drop Point 47	46° 29.292' N	110° 25.897' W	5627
Water Source		Drop Point 48	46° 29.292' N	110° 25.897' W	5627
Water Source		Drop Point 49	46° 29.292' N	110° 25.897' W	5627
Water Source		Drop Point 50	46° 29.292' N	110° 25.897' W	5627
Water Source		Drop Point 51	46° 29.292' N	110° 25.897' W	5627
Water Source		Drop Point 52	46° 29.292' N	110° 25.897' W	5627
Water Source		Drop Point 53	46° 29.292' N	110° 25.897' W	5627
Water Source		Drop Point 54	46° 29.292' N	110° 25.897' W	5627
Water Source		Drop Point 55	46° 29.292' N	110° 25.897' W	5627
Water Source		Drop Point 56	46° 29.292' N	110° 25.897' W	5627
Water Source		Drop Point 57	46° 29.292' N	110° 25.897' W	5627
Water Source		Drop Point 58	46° 29.292' N	110° 25.897' W	5627
Water Source		Drop Point 59	46° 29.292' N	110° 25.897' W	5627
Water Source		Drop Point 60	46° 29.292' N	110° 25.897' W	5627
Water Source		Drop Point 61	46° 29.292' N	110° 25.897' W	5627
Water Source		Drop Point 62	46° 29.292' N	110° 25.897' W	5627
Water Source		Drop Point 63	46° 29.292' N	110° 25.897' W	5627
Water Source		Drop Point 64	46° 29.292' N	110° 25.897' W	5627
Water Source		Drop Point 65	46° 29.292' N	110° 25.897' W	5627
Water Source		Drop Point 66	46° 29.292' N	110° 25.897' W	5627
Water Source		Drop Point 67	46° 29.292' N	110° 25.897' W	5627
Water Source		Drop Point 68	46° 29.292' N	110° 25.897' W	5627
Water Source		Drop Point 69	46° 29.292' N	110° 25.897' W	5627
Water Source		Drop Point 70	46° 29.292' N	110° 25.897' W	5627
Water Source		Drop Point 71	46° 29.292' N	110° 25.897' W	5627
Water Source		Drop Point 72	46° 29.292' N	110° 25.897' W	5627
Water Source		Drop Point 73	46° 29.292' N	110° 25.897' W	5627
Water Source		Drop Point 74	46° 29.292' N	110° 25.897' W	5627
Water Source		Drop Point 75	46° 29.292' N	110° 25.897' W	5627
Water Source		Drop Point 76	46° 29.292' N	110° 25.897' W	5627
Water Source		Drop Point 77	46° 29.292' N	110° 25.897' W	5627
Water Source		Drop Point 78	46° 29.292' N	110° 25.897' W	5627
Water Source		Drop Point 79	46° 29.292' N	110° 25.897' W	5627
Water Source		Drop Point 80	46° 29.292' N	110° 25.897' W	5627
Water Source		Drop Point 81	46° 29.292' N	110° 25.897' W	5627
Water Source		Drop Point 82	46° 29.292' N	110° 25.897' W	5627
Water Source		Drop Point 83	46° 29.292' N	110° 25.897' W	5627
Water Source		Drop Point 84	46° 29.292' N	110° 25.897' W	5627
Water Source		Drop Point 85	46° 29.292' N	110° 25.897' W	5627
Water Source		Drop Point 86	46° 29.292' N	110° 25.897' W	5627
Water Source		Drop Point 87	46° 29.292' N	110° 25.897' W	5627
Water Source		Drop Point 88	46° 29.292' N	110° 25.897' W	5627
Water Source		Drop Point 89	46° 29.292' N	110° 25.897' W	5627
Water Source		Drop Point 90	46° 29.292' N	110° 25.897' W	5627
Water Source		Drop Point 91	46° 29.292' N	110° 25.897' W	5627
Water Source		Drop Point 92	46° 29.292' N	110° 25.897' W	5627
Water Source		Drop Point 93	46° 29.292' N	110° 25.897' W	5627
Water Source		Drop Point 94	46° 29.292' N	110° 25.897' W	5627
Water Source		Drop Point 95	46° 29.292' N	110° 25.897' W	5627
Water Source		Drop Point 96	46° 29.292' N	110° 25.897' W	5627
Water Source		Drop Point 97	46° 29.292' N	110° 25.897' W	5627
Water Source		Drop Point 98	46° 29.292' N	110° 25.897' W	5627
Water Source		Drop Point 99	46° 29.292' N	110° 25.897' W	5627
Water Source		Drop Point 100	46° 29.292' N	110° 25.897' W	5627

