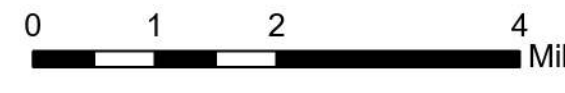


Air Operations All Fires Overview

Operational Period 8/30/2021

Divide Complex: Balsinger MT-HLF-005079
8,584 Acres @ 1547 8/20
Woods Creek - MT-HLF-000258
55,411 Acres @ 2143 8/27



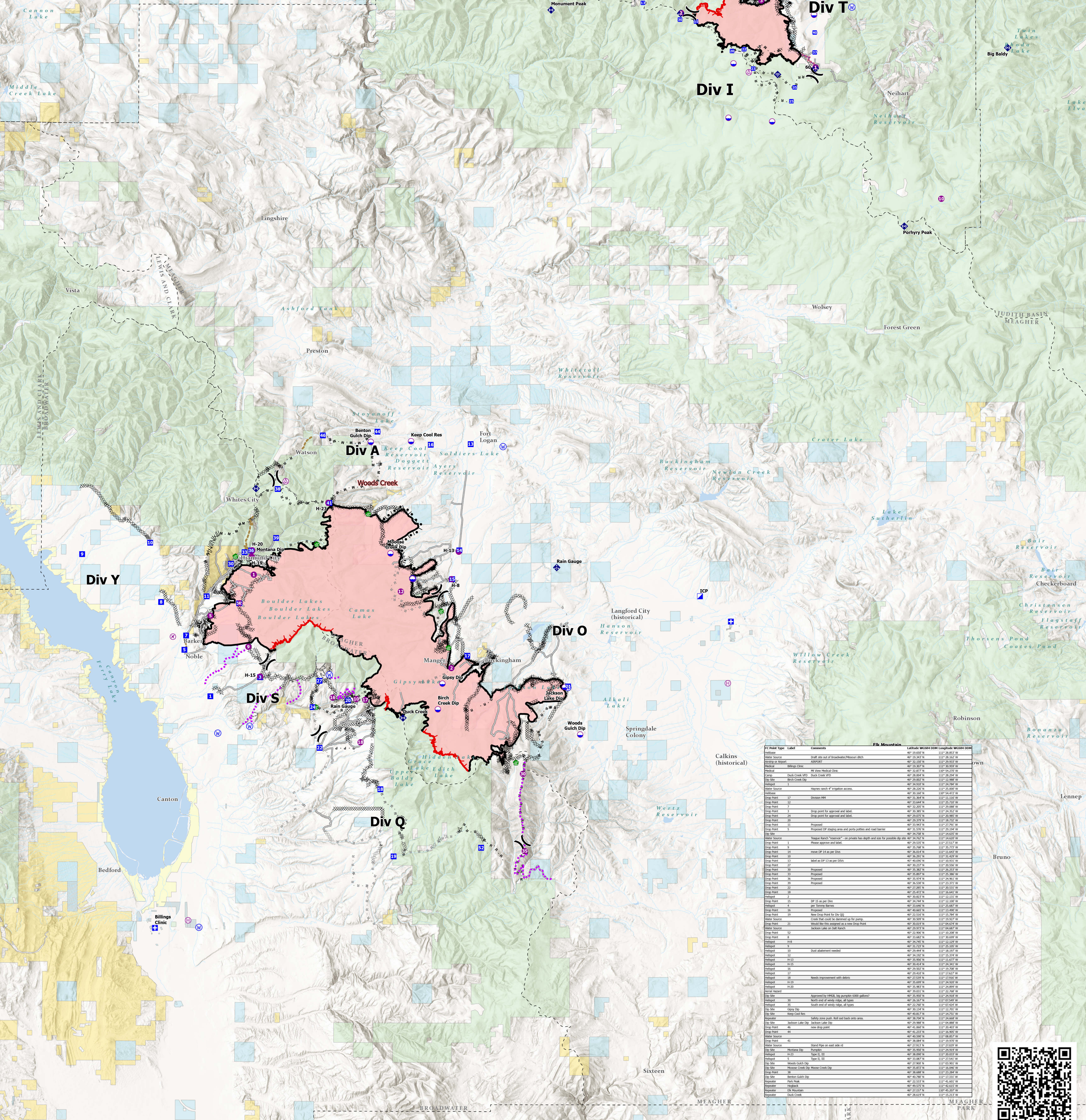
FC Point Type	Label	Comments	Latitude WGS84 (N)	Longitude WGS84 (W)	Elevation (Feet)
Camp	Show Down		46° 50.500' N	110° 41.824' W	
Dip Site			46° 50.627' N	110° 48.869' W	
Dip Site			46° 50.995' N	110° 54.367' W	
Dip Site		Orion Park Pumping Dip Site (25,000 gallon capacity)	46° 54.600' N	110° 51.370' W	
Dip Site		Iron Mine Dip (2) 6,000 gallon capacity	46° 57.490' N	110° 54.059' W	
Dip Site			47° 00.937' N	110° 53.694' W	
Dip Point	10		46° 58.110' N	110° 53.378' W	
Dip Point	11	Drop point 11, Balsinger trail parking area. Good parking area in the back with cell phone reception.	46° 59.340' N	110° 56.473' W	
Dip Point	13		47° 00.167' N	110° 59.894' W	
Dip Point	20		46° 58.030' N	110° 54.157' W	
Dip Point	22	DP 22, wide "pullout" area at trail turn, limited parking. Weak cell phone reception.	46° 58.110' N	110° 53.379' W	
Dip Point	23	DP 23, also a good size pullout area, good cell phone reception.	46° 57.261' N	110° 52.788' W	
Dip Point	25	Drop point 25, per lead H-10 keep all vehicles out of back park, or "pullout" SW of dip due to new stand and many arches also found in meadow.	46° 58.821' N	110° 50.337' W	
Dip Point	30		46° 59.427' N	110° 57.959' W	
Dip Point	35		46° 58.431' N	110° 53.218' W	
Dip Point	37		46° 59.971' N	110° 48.825' W	
Dip Point	40		46° 58.847' N	110° 48.824' W	
Dip Point	50	Label as DP50	47° 02.097' N	110° 48.143' W	
Dip Point	52	New drop point	47° 02.660' N	110° 50.020' W	
Dip Point	54	Label as DP54	47° 03.477' N	110° 48.003' W	
Dip Point	55	Historical DP 55	47° 05.037' N	110° 50.572' W	
Helipoint	1	Force West Side	46° 57.807' N	110° 48.778' W	7012
Helipoint	10		46° 51.497' N	110° 49.704' W	
Helipoint	2		46° 59.712' N	110° 57.130' W	7500
Helipoint	3		47° 00.299' N	110° 52.256' W	5863
Helipoint	4		47° 00.612' N	110° 51.805' W	5779
Separator	Big Baldy		46° 58.144' N	110° 36.393' W	
Separator	Measurement Peak		46° 59.840' N	111° 02.814' W	
Separator	Porphyry Peak		46° 50.292' N	110° 43.000' W	
Water Source		Gravity work for existing system around Barn and Tree Colter.	46° 59.962' N	110° 46.417' W	
Water Source	Camp Rotary		47° 01.680' N	110° 46.722' W	

- Aerial Hazard
- Airstrip or Airport
- Dip Site
- Helipoint
- Helibase
- Medical
- Incident Command Post
- Drop Point
- Water Development or Draft Site
- Mobile Weather Unit
- Internet Access
- Repeater
- Water Source
- Completed Burnout
- Completed Dozer Line
- Completed Fuel Break
- Completed Hand Line
- Completed Mixed Construction Line
- Completed Flow Line
- Completed Road as Line

- Planned Dozer Line
- Planned Mixed Construction Line
- Planned Road as Line
- Planned Secondary Line
- Access or Improved Road
- Other
- Road Repair
- Route
- Fire Edge
- Contained Line
- Wildfire Daily Fire Perimeter
- Stream
- Ponds/Lakes
- County

Land Ownership

- Local Government
- State Government
- US Bureau of Land Management
- US Bureau of Reclamation
- US Dept of Agriculture
- US Dept of Defense
- US Fish and Wildlife Service
- US Forest Service
- Other US Government



FC Point Type	Label	Comments	Latitude WGS84 (N)	Longitude WGS84 (W)	Elevation (Feet)
Water Source		Draft site out of Broadwater Reservoir ditch	46° 15.242' N	110° 28.152' W	
Medical	Adopted		46° 22.250' N	110° 27.250' W	
Medical	Hillside Clinic		46° 18.307' N	110° 30.500' W	
Medical		18. West Medical Clinic	46° 12.877' N	109° 54.250' W	
Camp	Duck Creek VFD	Duck Creek VFD	46° 20.802' N	110° 13.980' W	
Dip Site	Bark Creek Dip		46° 24.800' N	110° 14.800' W	
Water Source		Haynes search #1 irrigation access	46° 38.200' N	110° 25.800' W	
Dip Point	17	Drop point 17	46° 31.244' N	110° 11.150' W	
Dip Point	12	Proposed	46° 33.400' N	110° 25.200' W	
Dip Point	7	Proposed	46° 32.205' N	110° 29.080' W	
Dip Point	6	Drop point for approval and label	46° 33.400' N	110° 25.200' W	
Dip Point	24	Drop point for approval and label	46° 29.055' N	110° 26.980' W	
Dip Point	20	Proposed	46° 29.200' N	110° 27.750' W	
Dip Point	11	Proposed	46° 31.500' N	110° 29.200' W	
Dip Point	5	Proposed	46° 31.500' N	110° 29.200' W	
Water Source		"Trapper Ranch" reservoir" see position has depth and see for possible dip site	46° 34.742' N	110° 14.422' W	
Dip Point	1	Force West Side	46° 29.800' N	110° 27.210' W	
Dip Point	9	Force West Side	46° 35.240' N	110° 29.272' W	
Dip Point	14	Force West Side	46° 30.800' N	110° 14.422' W	
Dip Point	30	Force West Side	46° 36.200' N	110° 14.422' W	
Dip Point	27	Force West Side	46° 30.272' N	110° 25.500' W	
Dip Point	32	Force West Side	46° 30.272' N	110° 25.500' W	
Dip Point	33	Force West Side	46° 30.272' N	110° 25.500' W	
Dip Point	34	Force West Side	46° 30.272' N	110° 25.500' W	
Dip Point	35	Force West Side	46° 30.272' N	110° 25.500' W	
Dip Point	36	Force West Side	46° 30.272' N	110° 25.500' W	
Dip Point	37	Force West Side	46° 30.272' N	110° 25.500' W	
Dip Point	38	Force West Side	46° 30.272' N	110° 25.500' W	
Dip Point	39	Force West Side	46° 30.272' N	110° 25.500' W	
Dip Point	40	Force West Side	46° 30.272' N	110° 25.500' W	
Dip Point	41	Force West Side	46° 30.272' N	110° 25.500' W	
Dip Point	42	Force West Side	46° 30.272' N	110° 25.500' W	
Dip Point	43	Force West Side	46° 30.272' N	110° 25.500' W	
Dip Point	44	Force West Side	46° 30.272' N	110° 25.500' W	
Dip Point	45	Force West Side	46° 30.272' N	110° 25.500' W	
Dip Point	46	Force West Side	46° 30.272' N	110° 25.500' W	
Dip Point	47	Force West Side	46° 30.272' N	110° 25.500' W	
Dip Point	48	Force West Side	46° 30.272' N	110° 25.500' W	
Dip Point	49	Force West Side	46° 30.272' N	110° 25.500' W	
Dip Point	50	Force West Side	46° 30.272' N	110° 25.500' W	
Dip Point	51	Force West Side	46° 30.272' N	110° 25.500' W	
Dip Point	52	Force West Side	46° 30.272' N	110° 25.500' W	
Dip Point	53	Force West Side	46° 30.272' N	110° 25.500' W	
Dip Point	54	Force West Side	46° 30.272' N	110° 25.500' W	
Dip Point	55	Force West Side	46° 30.272' N	110° 25.500' W	
Dip Point	56	Force West Side	46° 30.272' N	110° 25.500' W	
Dip Point	57	Force West Side	46° 30.272' N	110° 25.500' W	
Dip Point	58	Force West Side	46° 30.272' N	110° 25.500' W	
Dip Point	59	Force West Side	46° 30.272' N	110° 25.500' W	
Dip Point	60	Force West Side	46° 30.272' N	110° 25.500' W	
Dip Point	61	Force West Side	46° 30.272' N	110° 25.500' W	
Dip Point	62	Force West Side	46° 30.272' N	110° 25.500' W	
Dip Point	63	Force West Side	46° 30.272' N	110° 25.500' W	
Dip Point	64	Force West Side	46° 30.272' N	110° 25.500' W	
Dip Point	65	Force West Side	46° 30.272' N	110° 25.500' W	
Dip Point	66	Force West Side	46° 30.272' N	110° 25.500' W	
Dip Point	67	Force West Side	46° 30.272' N	110° 25.500' W	
Dip Point	68	Force West Side	46° 30.272' N	110° 25.500' W	
Dip Point	69	Force West Side	46° 30.272' N	110° 25.500' W	
Dip Point	70	Force West Side	46° 30.272' N	110° 25.500' W	
Dip Point	71	Force West Side	46° 30.272' N	110° 25.500' W	
Dip Point	72	Force West Side	46° 30.272' N	110° 25.500' W	
Dip Point	73	Force West Side	46° 30.272' N	110° 25.500' W	
Dip Point	74	Force West Side	46° 30.272' N	110° 25.500' W	
Dip Point	75	Force West Side	46° 30.272' N	110° 25.500' W	
Dip Point	76	Force West Side	46° 30.272' N	110° 25.500' W	
Dip Point	77	Force West Side	46° 30.272' N	110° 25.500' W	
Dip Point	78	Force West Side	46° 30.272' N	110° 25.500' W	
Dip Point	79	Force West Side	46° 30.272' N	110° 25.500' W	
Dip Point	80	Force West Side	46° 30.272' N	110° 25.500' W	
Dip Point	81	Force West Side	46° 30.272' N	110° 25.500' W	
Dip Point	82	Force West Side	46° 30.272' N	110° 25.500' W	
Dip Point	83	Force West Side	46° 30.272' N	110° 25.500' W	
Dip Point	84	Force West Side	46° 30.272' N	110° 25.500' W	
Dip Point	85	Force West Side	46° 30.272' N	110° 25.500' W	
Dip Point	86	Force West Side	46° 30.272' N	110° 25.500' W	
Dip Point	87	Force West Side	46° 30.272' N	110° 25.500' W	
Dip Point	88	Force West Side	46° 30.272' N	110° 25.500' W	
Dip Point	89	Force West Side	46° 30.272' N	110° 25.500' W	
Dip Point	90	Force West Side	46° 30.272' N	110° 25.500' W	
Dip Point	91	Force West Side	46° 30.272' N	110° 25.500' W	
Dip Point	92	Force West Side	46° 30.272' N	110° 25.500' W	
Dip Point	93	Force West Side	46° 30.272' N	110° 25.500' W	
Dip Point	94	Force West Side	46° 30.272' N	110° 25.500' W	
Dip Point	95	Force West Side	46° 30.272' N	110° 25.500' W	
Dip Point	96	Force West Side	46° 30.272' N	110° 25.500' W	
Dip Point	97	Force West Side	46° 30.272' N	110° 25.500' W	
Dip Point	98	Force West Side	46° 30.272' N	110° 25.500' W	
Dip Point	99	Force West Side	46° 30.272' N	110° 25.500' W	
Dip Point	100	Force West Side	46° 30.272' N	110° 25.500' W	

