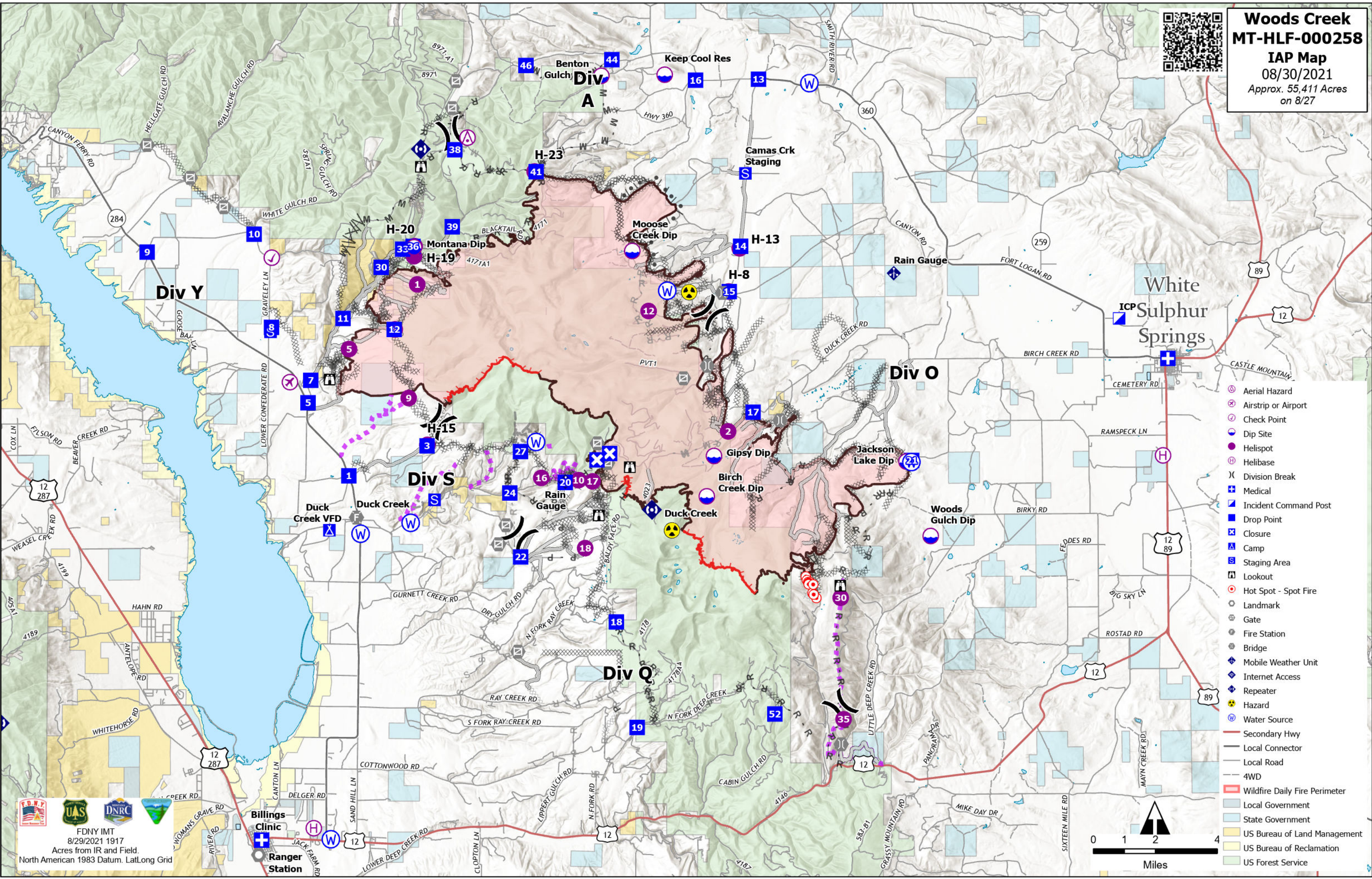




Woods Creek
MT-HLF-000258
IAP Map
 08/30/2021
 Approx. 55,411 Acres
 on 8/27



- Aerial Hazard
- Airstrip or Airport
- Check Point
- Dip Site
- Helispot
- Helibase
- Division Break
- Medical
- Incident Command Post
- Drop Point
- Closure
- Camp
- Staging Area
- Lookout
- Hot Spot - Spot Fire
- Landmark
- Gate
- Fire Station
- Bridge
- Mobile Weather Unit
- Internet Access
- Repeater
- Hazard
- Water Source
- Secondary Hwy
- Local Connector
- Local Road
- 4WD
- Wildfire Daily Fire Perimeter
- Local Government
- State Government
- US Bureau of Land Management
- US Bureau of Reclamation
- US Forest Service

FDNY IMT
 8/29/2021 1917
 Acres from IR and Field.
 North American 1983 Datum. Lat/Long Grid

Billings Clinic
 Ranger Station

