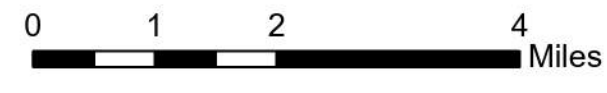


# Air Operations All Fires Overview

Operational Period 9/01/2021

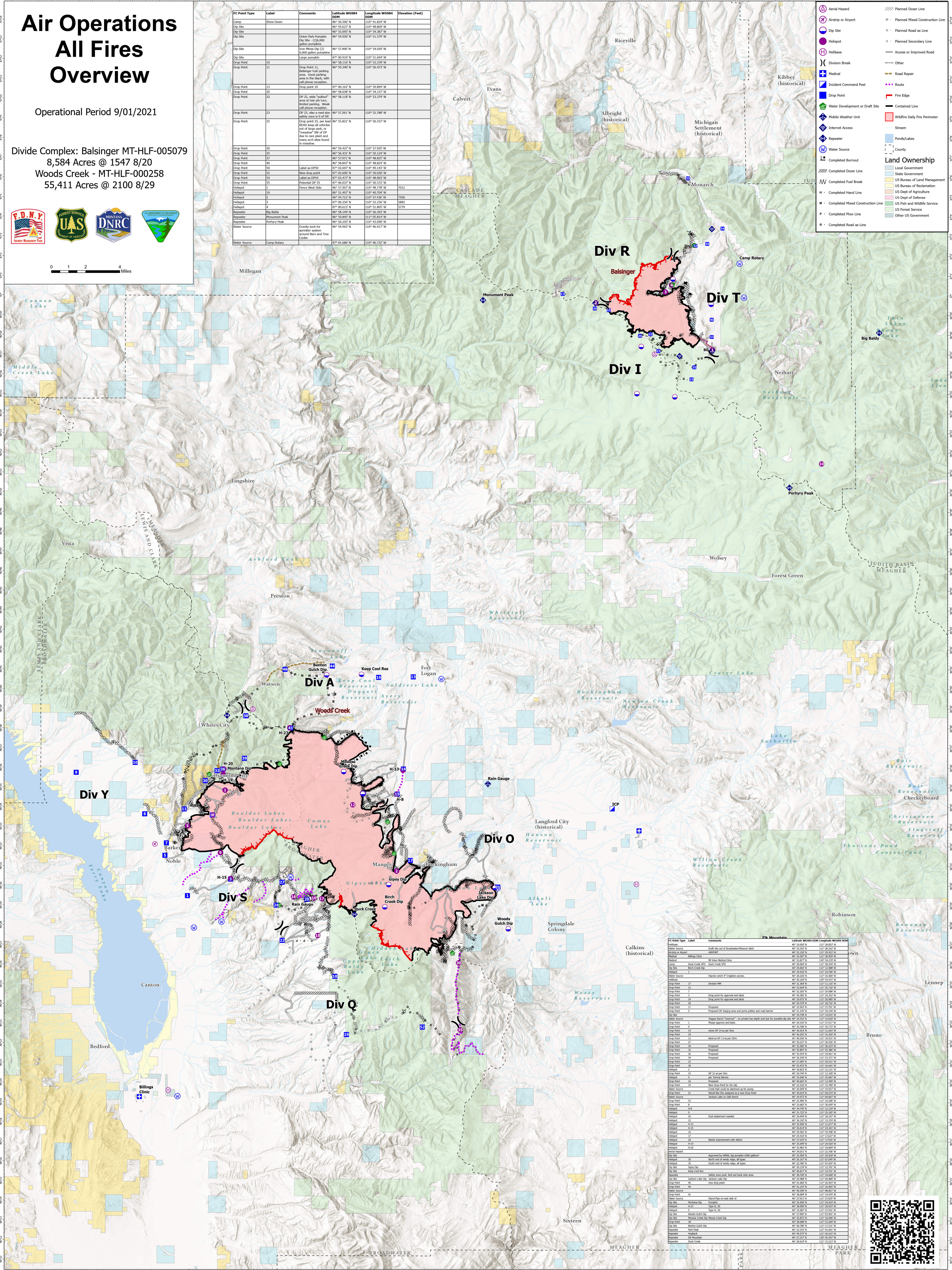
Divide Complex: Balsinger MT-HLF-005079  
8,584 Acres @ 1547 8/20  
Woods Creek - MT-HLF-000258  
55,411 Acres @ 2100 8/29



FC Point Type	Label	Comments	Latitude WGS84 UTM	Longitude WGS84 UTM	Elevation (Feet)
Camp	Show Down		46° 50.500' N	110° 41.824' W	
Dip Site			46° 50.627' N	110° 48.869' W	
Dip Site			46° 50.995' N	110° 54.367' W	
Dip Site		Olden Park Pumpkin Dip Site (25,000 gallon container)	46° 54.699' N	110° 51.379' W	
Dip Site		Iron Mine Dip (2) 6,000 gallon container	46° 57.490' N	110° 54.059' W	
Dip Site			47° 00.937' N	110° 53.694' W	
Dip Point	10		46° 58.110' N	110° 53.378' W	
Dip Point	11	Drop point 11, Balsinger trail parking area. Cool parking area in the back with cell phone reception.	46° 59.340' N	110° 56.473' W	
Dip Point	13	Drop point 13	47° 00.167' N	110° 59.894' W	
Dip Point	20		46° 58.038' N	110° 54.157' W	
Dip Point	22	DP 22, wide "pullout" limited parking. Weak cell phone reception.	46° 57.261' N	110° 52.788' W	
Dip Point	23	DP 23, also a med size pullout area with cell phone reception.	46° 57.821' N	110° 50.337' W	
Dip Point	25	Drop point 25, per lead 10-10 keep all vehicles out of large park, or "pullout" SW of DP due to new stand and many arch sites found in woods.	46° 59.427' N	110° 57.505' W	
Dip Point	35		46° 56.431' N	110° 50.124' W	
Dip Point	37		46° 57.971' N	110° 48.825' W	
Dip Point	40		46° 58.847' N	110° 48.824' W	
Dip Point	50	Label as DP50	47° 02.097' N	110° 46.143' W	
Dip Point	52	New drop point	47° 02.660' N	110° 50.020' W	
Dip Point	54	Label as DP54	47° 03.477' N	110° 48.003' W	
Dip Point	55	Historical DP 55	47° 05.037' N	110° 46.572' W	7012
Helipoint	1	Force West Side	46° 57.807' N	110° 48.778' W	5863
Helipoint	10		46° 51.497' N	110° 49.704' W	
Helipoint	2		46° 59.712' N	110° 57.130' W	7500
Helipoint	3		46° 59.209' N	110° 57.256' W	5863
Helipoint	4		47° 00.612' N	110° 51.805' W	5779
Separator	Big Baldy		46° 58.144' N	110° 36.393' W	
Separator	Measurement Peak		46° 59.842' N	110° 48.814' W	
Separator	Porphyry Peak		46° 59.292' N	110° 43.000' W	
Water Source		Gravelly sock for water system around Barn and Tree Colter.	46° 59.962' N	110° 46.417' W	
Water Source	Camp Rotary		47° 01.680' N	110° 46.722' W	

**Land Ownership**

- Local Government
- State Government
- US Bureau of Land Management
- US Bureau of Reclamation
- US Dept of Agriculture
- US Dept of Defense
- US Fish and Wildlife Service
- US Forest Service
- Other US Government



FC Point Type	Label	Comments	Latitude WGS84 UTM	Longitude WGS84 UTM	Elevation (Feet)
Water Source		Drift site out of Broadwater Reservoir ditch	46° 15.242' N	110° 28.152' W	
Medical	Adipert		46° 22.258' N	110° 27.258' W	
Medical	Hillside Clinic		46° 16.307' N	110° 30.509' W	
Medical		18. Vena Medical Clinic	46° 32.877' N	109° 54.259' W	
Camp	Duck Creek VED	Duck Creek VED	46° 29.802' N	110° 13.989' W	
Dip Site	Bark Creek Dip		46° 34.828' N	110° 14.828' W	
Water Source		Haynes search #1 irrigation access	46° 38.202' N	110° 25.802' W	
Dip Point	17	Drop point 17	46° 31.244' N	110° 11.120' W	
Dip Point	18	Drop point for approval and label	46° 32.205' N	110° 29.888' W	
Dip Point	7	Drop point for approval and label	46° 32.205' N	110° 29.888' W	
Dip Point	24	Drop point for approval and label	46° 29.053' N	110° 26.985' W	
Dip Point	20	Proposed	46° 29.204' N	110° 27.920' W	
Dip Point	11	Proposed	46° 31.526' N	110° 29.244' W	
Dip Point	5	Proposed DP staging area and porta potties and road barrier	46° 31.526' N	110° 14.828' W	
Water Source		"Trapper Ranch" Reservoir" see position has depth and see for possible dip site	46° 34.742' N	110° 14.422' W	
Dip Point	1	Force West Side	46° 29.802' N	110° 48.778' W	
Dip Point	9	Force West Side	46° 35.248' N	110° 29.272' W	
Dip Point	14	Force West Side	46° 30.828' N	110° 14.828' W	
Dip Point	39	Force West Side	46° 36.292' N	110° 14.422' W	
Dip Point	27	Force West Side	46° 30.272' N	110° 20.528' W	
Dip Point	32	Force West Side	46° 30.272' N	110° 20.528' W	
Dip Point	33	Force West Side	46° 30.272' N	110° 20.528' W	
Dip Point	36	Force West Side	46° 30.272' N	110° 20.528' W	
Dip Point	38	Force West Side	46° 30.272' N	110° 20.528' W	
Dip Point	22	Force West Side	46° 27.262' N	110° 25.512' W	
Dip Point	18	Force West Side	46° 24.242' N	110° 14.828' W	
Helipoint	2	Force West Side	46° 30.828' N	110° 11.120' W	
Helipoint	4	Force West Side	46° 33.444' N	110° 24.444' W	
Helipoint	38	Force West Side	46° 30.828' N	110° 11.120' W	
Helipoint	39	Force West Side	46° 22.514' N	110° 15.784' W	
Helipoint	18	Force West Side	46° 24.242' N	110° 14.828' W	
Helipoint	12	Force West Side	46° 34.102' N	110° 11.120' W	
Helipoint	11	Force West Side	46° 30.828' N	110° 11.120' W	
Helipoint	13	Force West Side	46° 30.828' N	110° 11.120' W	
Helipoint	15	Force West Side	46° 29.412' N	110° 11.120' W	
Helipoint	16	Force West Side	46° 27.262' N	110° 11.120' W	
Helipoint	19	Force West Side	46° 30.828' N	110° 20.528' W	
Helipoint	20	Force West Side	46° 30.828' N	110° 20.528' W	
Helipoint	21	Force West Side	46° 30.828' N	110° 20.528' W	
Helipoint	23	Force West Side	46° 29.412' N	110° 11.120' W	
Helipoint	24	Force West Side	46° 29.412' N	110° 11.120' W	
Helipoint	25	Force West Side	46° 29.412' N	110° 11.120' W	
Helipoint	26	Force West Side	46° 29.412' N	110° 11.120' W	
Helipoint	27	Force West Side	46° 29.412' N	110° 11.120' W	
Helipoint	28	Force West Side	46° 29.412' N	110° 11.120' W	
Helipoint	29	Force West Side	46° 29.412' N	110° 11.120' W	
Helipoint	30	Force West Side	46° 29.412' N	110° 11.120' W	
Helipoint	31	Force West Side	46° 29.412' N	110° 11.120' W	
Helipoint	34	Force West Side	46° 29.412' N	110° 11.120' W	
Helipoint	35	Force West Side	46° 29.412' N	110° 11.120' W	
Helipoint	37	Force West Side	46° 29.412' N	110° 11.120' W	
Helipoint	38	Force West Side	46° 29.412' N	110° 11.120' W	
Helipoint	39	Force West Side	46° 29.412' N	110° 11.120' W	
Helipoint	40	Force West Side	46° 29.412' N	110° 11.120' W	
Helipoint	41	Force West Side	46° 29.412' N	110° 11.120' W	
Helipoint	42	Force West Side	46° 29.412' N	110° 11.120' W	
Helipoint	43	Force West Side	46° 29.412' N	110° 11.120' W	
Helipoint	44	Force West Side	46° 29.412' N	110° 11.120' W	
Helipoint	45	Force West Side	46° 29.412' N	110° 11.120' W	
Helipoint	46	Force West Side	46° 29.412' N	110° 11.120' W	
Helipoint	47	Force West Side	46° 29.412' N	110° 11.120' W	
Helipoint	48	Force West Side	46° 29.412' N	110° 11.120' W	
Helipoint	49	Force West Side	46° 29.412' N	110° 11.120' W	
Helipoint	50	Force West Side	46° 29.412' N	110° 11.120' W	
Helipoint	51	Force West Side	46° 29.412' N	110° 11.120' W	
Helipoint	52	Force West Side	46° 29.412' N	110° 11.120' W	
Helipoint	53	Force West Side	46° 29.412' N	110° 11.120' W	
Helipoint	54	Force West Side	46° 29.412' N	110° 11.120' W	
Helipoint	55	Force West Side	46° 29.412' N	110° 11.120' W	
Helipoint	56	Force West Side	46° 29.412' N	110° 11.120' W	
Helipoint	57	Force West Side	46° 29.412' N	110° 11.120' W	
Helipoint	58	Force West Side	46° 29.412' N	110° 11.120' W	
Helipoint	59	Force West Side	46° 29.412' N	110° 11.120' W	
Helipoint	60	Force West Side	46° 29.412' N	110° 11.120' W	
Helipoint	61	Force West Side	46° 29.412' N	110° 11.120' W	
Helipoint	62	Force West Side	46° 29.412' N	110° 11.120' W	
Helipoint	63	Force West Side	46° 29.412' N	110° 11.120' W	
Helipoint	64	Force West Side	46° 29.412' N	110° 11.120' W	
Helipoint	65	Force West Side	46° 29.412' N	110° 11.120' W	
Helipoint	66	Force West Side	46° 29.412' N	110° 11.120' W	
Helipoint	67	Force West Side	46° 29.412' N	110° 11.120' W	
Helipoint	68	Force West Side	46° 29.412' N	110° 11.120' W	
Helipoint	69	Force West Side	46° 29.412' N	110° 11.120' W	
Helipoint	70	Force West Side	46° 29.412' N	110° 11.120' W	
Helipoint	71	Force West Side	46° 29.412' N	110° 11.120' W	
Helipoint	72	Force West Side	46° 29.412' N	110° 11.120' W	
Helipoint	73	Force West Side	46° 29.412' N	110° 11.120' W	
Helipoint	74	Force West Side	46° 29.412' N	110° 11.120' W	
Helipoint	75	Force West Side	46° 29.412' N	110° 11.120' W	
Helipoint	76	Force West Side	46° 29.412' N	110° 11.120' W	
Helipoint	77	Force West Side	46° 29.412' N	110° 11.120' W	
Helipoint	78	Force West Side	46° 29.412' N	110° 11.120' W	
Helipoint	79	Force West Side	46° 29.412' N	110° 11.120' W	
Helipoint	80	Force West Side	46° 29.412' N	110° 11.120' W	
Helipoint	81	Force West Side	46° 29.412' N	110° 11.120' W	
Helipoint	82	Force West Side	46° 29.412' N	110° 11.120' W	
Helipoint	83	Force West Side	46° 29.412' N	110° 11.120' W	
Helipoint	84	Force West Side	46° 29.412' N	110° 11.120' W	
Helipoint	85	Force West Side	46° 29.412' N	110° 11.120' W	
Helipoint	86	Force West Side	46° 29.412' N	110° 11.120' W	
Helipoint	87	Force West Side	46° 29.412' N	110° 11.120' W	
Helipoint	88	Force West Side	46° 29.412' N	110° 11.120' W	
Helipoint	89	Force West Side	46° 29.412' N	110° 11.120' W	
Helipoint	90	Force West Side	46° 29.412' N	110° 11.120' W	
Helipoint	91	Force West Side	46° 29.412' N	110° 11.120' W	
Helipoint	92	Force West Side	46° 29.412' N	110° 11.120' W	
Helipoint	93	Force West Side	46° 29.412' N	110° 11.120' W	
Helipoint	94	Force West Side	46° 29.412' N	110° 11.120' W	
Helipoint	95	Force West Side	46° 29.412' N	110° 11.120' W	
Helipoint	96	Force West Side	46° 29.412' N	110° 11.120' W	
Helipoint	97	Force West Side	46° 29.412' N	110° 11.120' W	
Helipoint	98	Force West Side	46° 29.412' N	110° 11.120' W	
Helipoint	99	Force West Side	46° 29.412' N	110° 11.120' W	
Helipoint	100	Force West Side	46° 29.412' N	110° 11.120' W	

