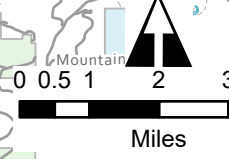
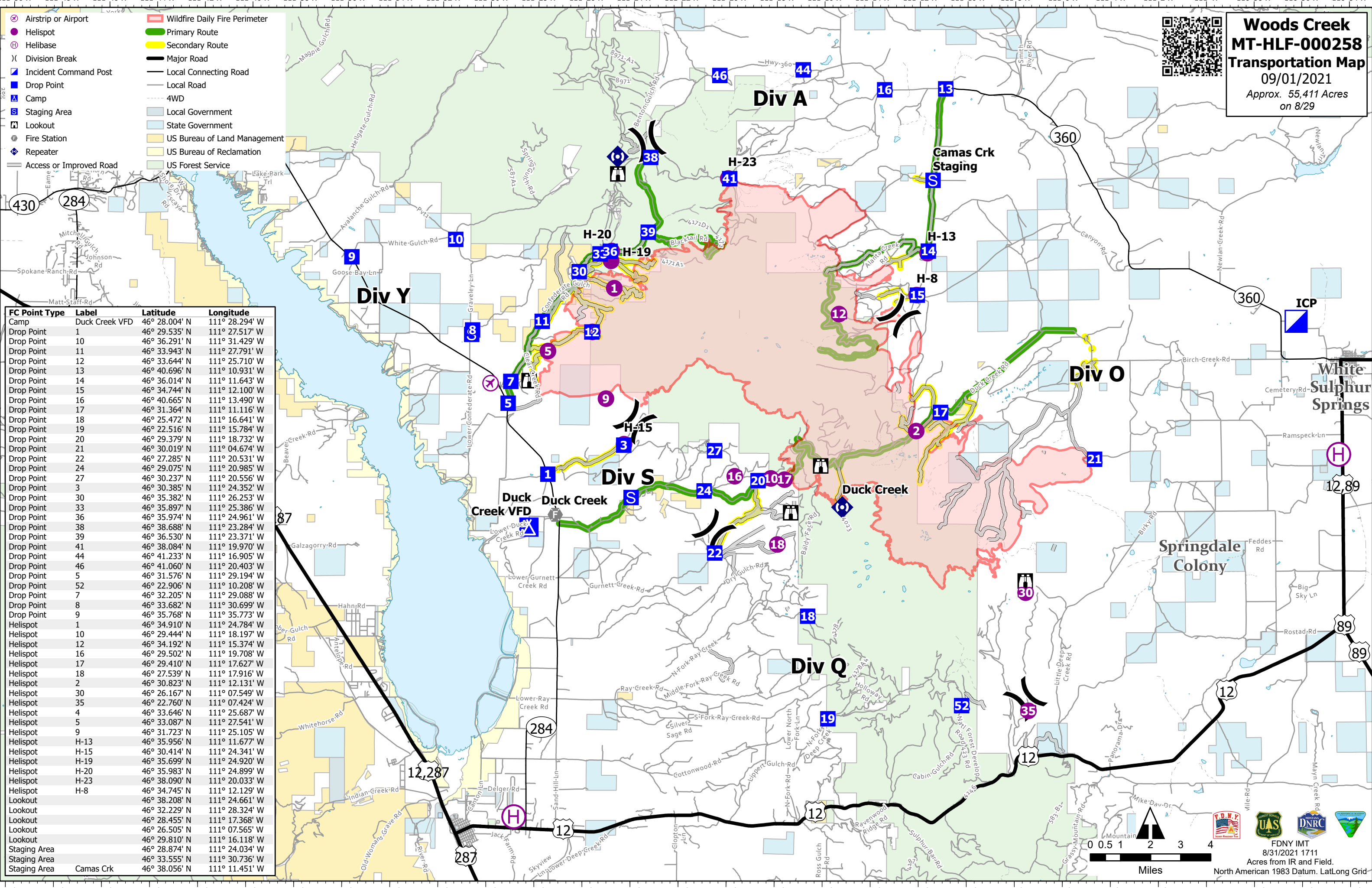


Woods Creek
MT-HLF-000258
Transportation Map
 09/01/2021
 Approx. 55,411 Acres
 on 8/29



- Airstrip or Airport
- Helispot
- Helibase
- Division Break
- Incident Command Post
- Drop Point
- Camp
- Staging Area
- Lookout
- Fire Station
- Repeater
- Access or Improved Road
- Wildfire Daily Fire Perimeter
- Primary Route
- Secondary Route
- Major Road
- Local Connecting Road
- Local Road
- 4WD
- Local Government
- State Government
- US Bureau of Land Management
- US Bureau of Reclamation
- US Forest Service

FC Point Type	Label	Latitude	Longitude
Camp	Duck Creek VFD	46° 28.004' N	111° 28.294' W
Drop Point	1	46° 29.535' N	111° 27.517' W
Drop Point	10	46° 36.291' N	111° 31.429' W
Drop Point	11	46° 33.943' N	111° 27.791' W
Drop Point	12	46° 33.644' N	111° 25.710' W
Drop Point	13	46° 40.696' N	111° 10.931' W
Drop Point	14	46° 36.014' N	111° 11.643' W
Drop Point	15	46° 34.744' N	111° 12.100' W
Drop Point	16	46° 40.665' N	111° 13.490' W
Drop Point	17	46° 31.364' N	111° 11.116' W
Drop Point	18	46° 25.472' N	111° 16.641' W
Drop Point	19	46° 22.516' N	111° 15.784' W
Drop Point	20	46° 29.379' N	111° 18.732' W
Drop Point	21	46° 30.019' N	111° 04.674' W
Drop Point	22	46° 27.285' N	111° 20.531' W
Drop Point	24	46° 29.075' N	111° 20.985' W
Drop Point	27	46° 30.237' N	111° 20.556' W
Drop Point	3	46° 30.385' N	111° 24.352' W
Drop Point	30	46° 35.382' N	111° 26.253' W
Drop Point	33	46° 35.897' N	111° 25.386' W
Drop Point	36	46° 35.974' N	111° 24.961' W
Drop Point	38	46° 38.688' N	111° 23.284' W
Drop Point	39	46° 36.530' N	111° 23.371' W
Drop Point	41	46° 38.084' N	111° 19.970' W
Drop Point	44	46° 41.233' N	111° 16.905' W
Drop Point	46	46° 41.060' N	111° 20.403' W
Drop Point	5	46° 31.576' N	111° 29.194' W
Drop Point	52	46° 22.906' N	111° 10.208' W
Drop Point	7	46° 32.205' N	111° 29.088' W
Drop Point	8	46° 33.682' N	111° 30.699' W
Drop Point	9	46° 35.768' N	111° 35.773' W
Helispot	1	46° 34.910' N	111° 24.784' W
Helispot	10	46° 29.444' N	111° 18.197' W
Helispot	12	46° 34.192' N	111° 15.374' W
Helispot	16	46° 29.502' N	111° 19.708' W
Helispot	17	46° 29.410' N	111° 17.627' W
Helispot	18	46° 27.539' N	111° 17.916' W
Helispot	2	46° 30.823' N	111° 12.131' W
Helispot	30	46° 26.167' N	111° 07.549' W
Helispot	35	46° 22.760' N	111° 07.424' W
Helispot	4	46° 33.646' N	111° 25.687' W
Helispot	5	46° 33.087' N	111° 27.541' W
Helispot	9	46° 31.723' N	111° 25.105' W
Helispot	H-13	46° 35.956' N	111° 11.677' W
Helispot	H-15	46° 30.414' N	111° 24.341' W
Helispot	H-19	46° 35.699' N	111° 24.920' W
Helispot	H-20	46° 35.983' N	111° 24.899' W
Helispot	H-23	46° 38.090' N	111° 20.033' W
Helispot	H-8	46° 34.745' N	111° 12.129' W
Lookout		46° 38.208' N	111° 24.661' W
Lookout		46° 32.229' N	111° 28.324' W
Lookout		46° 28.455' N	111° 17.368' W
Lookout		46° 26.505' N	111° 07.565' W
Lookout		46° 29.810' N	111° 16.118' W
Staging Area		46° 28.874' N	111° 24.034' W
Staging Area		46° 33.555' N	111° 30.736' W
Staging Area	Camas Crk	46° 38.056' N	111° 11.451' W



FDNY IMT
 8/31/2021 1711
 Acres from IR and Field.
 North American 1983 Datum. Lat/Long Grid