

Woods Creek Fire MT-HLF-258

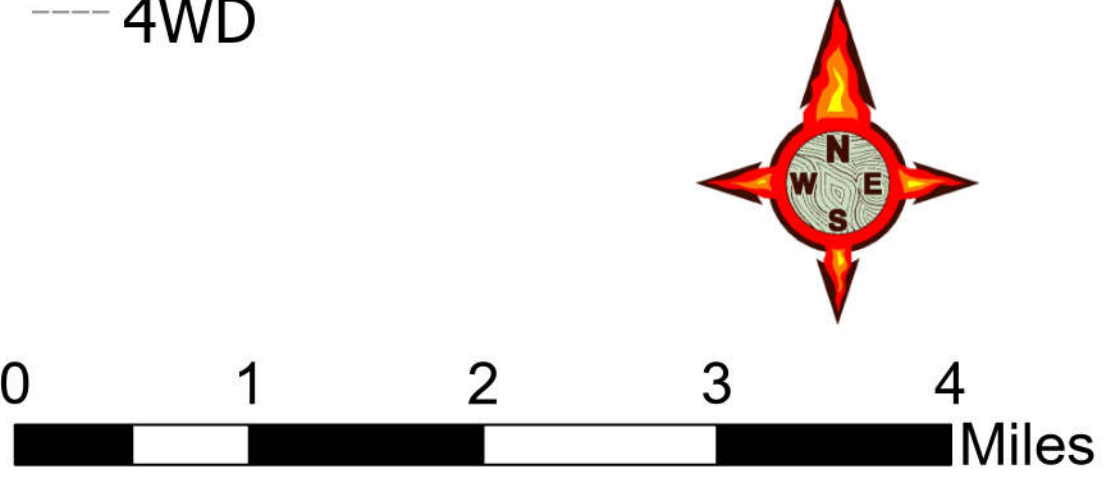
Management Action Points Existing & Proposed 8/21/21

Approx 55,882 acres @ 1058 8/21

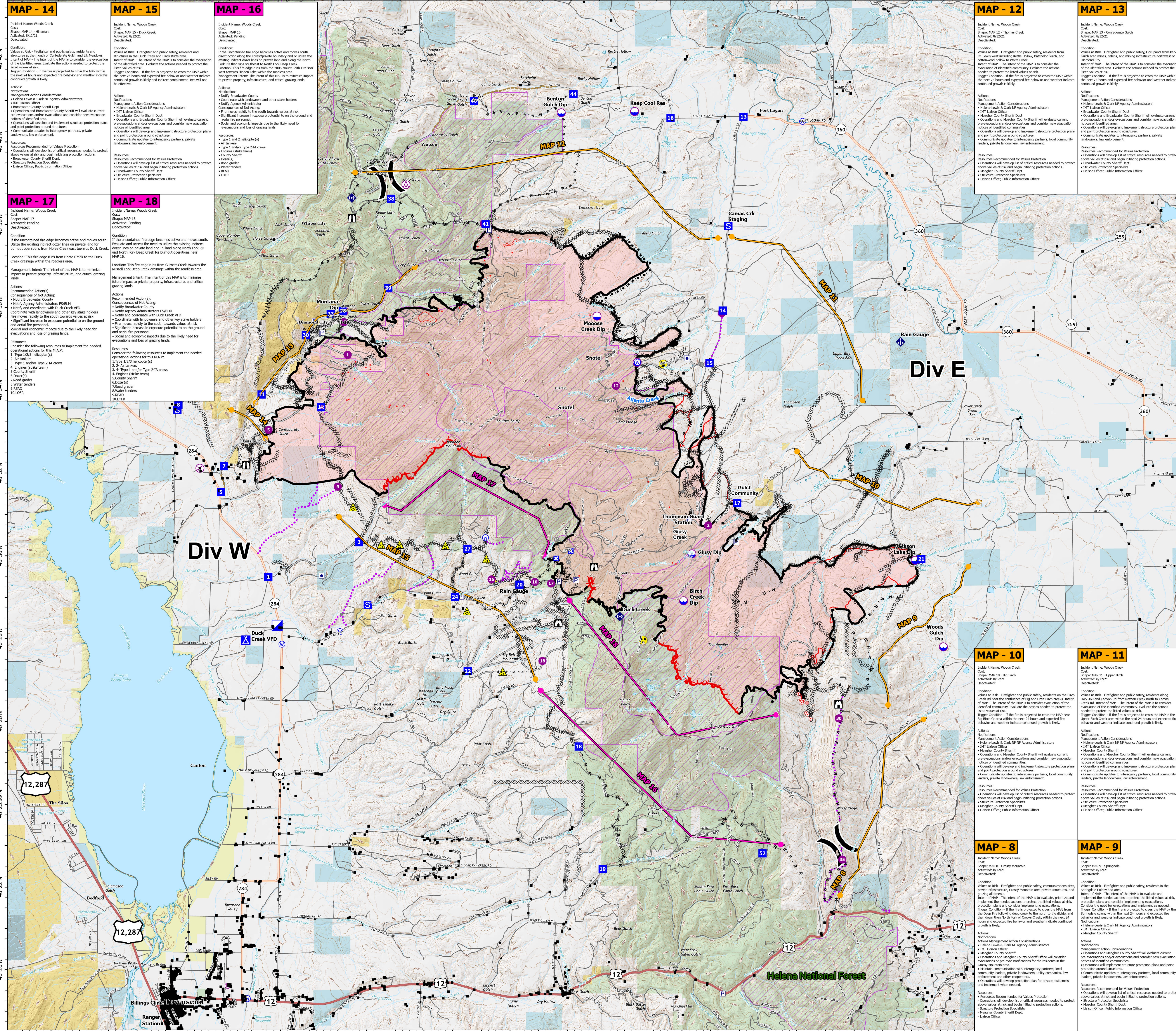


MAP WFDSS 8/16

- Active MAP
- Pending MAP
- Structures
- Aerial Hazard
- Airstrip or Airport
- Check Point
- Dip Site
- Helispot
- Helibase
- Division Break
- Medical
- Incident Command Post
- Drop Point
- Closure
- Camp
- Staging Area
- Lookout
- Hot Spot - Spot Fire
- Other
- Landmark
- Gate
- Bridge
- Mobile Weather Unit
- Internet Access
- Repeater
- Safety Zone
- Hazard
- Water Source
- Trail
- Completed Burnout
- Completed Dozer Line
- Completed Fuel Break
- Completed Hand Line
- Completed Mixed Construction Line
- Completed Plow Line
- Completed Road as Line
- Planned Dozer Line
- Planned Mixed Construction Line
- Planned Road as Line
- Planned Secondary Line
- Access or Improved Road
- Other
- Road Repair
- Route
- Fire Edge
- Contained Line
- Wildfire Daily Fire Perimeter
- Roadless Area
- Fire History
- US Route
- State Route
- Local Road
- 4WD



Date Exported: 9/1/2021 12:06 PM
North American 1983 Datum, LatLong Grid



MAP - 14

Incident Name: Woods Creek
Code: MT-HLF-258
Shape: MAP 14 - Human
Activated: 8/12/21
Deactivated:

Condition:
Values at Risk - Firefighter and public safety, residents and structures at the mouth of Confederate Gulch and Elk River. Intention of MAP - 14 is to consider the evacuation of the identified area. Evaluate the actions needed to protect the labeled values at risk.

Trigger Condition - If the fire is projected to cross the MAP within the next 24 hours and expected fire behavior and weather indicate continued growth is likely.

Actions:
Management Action Considerations
• Helena Lewis & Clark NF Agency Administrators
• IMT Liaison Officer
• Broadwater County Sheriff Dept
• Operations and Broadwater County Sheriff will evaluate current pre-evacuation and/or evacuations and consider new evacuation notices of identified areas.
• Operations will develop and implement structure protection plans and point protection around structures.
• Communicate updates to interagency partners, private landowners, law enforcement.

Resources:
Resources Recommended for Values Protection
• Operations will develop list of critical resources needed to protect above values at risk and begin initiating protection actions.
• Structure Protection Specialists
• Liaison Officer, Public Information Officer

MAP - 15

Incident Name: Woods Creek
Code: MT-HLF-258
Shape: MAP 15 - Duck Creek
Activated: 8/12/21
Deactivated:

Condition:
Values at Risk - Firefighter and public safety, residents and structures at the mouth of Duck Creek and Elk River. Intention of MAP - 15 is to consider the evacuation of the identified area. Evaluate the actions needed to protect the labeled values at risk.

Trigger Condition - If the fire is projected to cross the MAP within the next 24 hours and expected fire behavior and weather indicate continued growth is likely.

Actions:
Management Action Considerations
• Helena Lewis & Clark NF Agency Administrators
• IMT Liaison Officer
• Broadwater County Sheriff Dept
• Operations and Broadwater County Sheriff will evaluate current pre-evacuation and/or evacuations and consider new evacuation notices of identified areas.
• Operations will develop and implement structure protection plans and point protection around structures.
• Communicate updates to interagency partners, private landowners, law enforcement.

Resources:
Resources Recommended for Values Protection
• Operations will develop list of critical resources needed to protect above values at risk and begin initiating protection actions.
• Structure Protection Specialists
• Liaison Officer, Public Information Officer

MAP - 16

Incident Name: Woods Creek
Code: MT-HLF-258
Shape: MAP 16
Activated: Pending
Deactivated:

Condition:
If the uncontained fire edge becomes active and moves south, fire will advance along the Forest/State boundary and in the vicinity of the existing indirect door lines on private land and along the North Fork Elk River. Intention of MAP - 16 is to consider the evacuation of the identified area. Evaluate the actions needed to protect the labeled values at risk.

Trigger Condition - If the fire is projected to cross the MAP within the next 24 hours and expected fire behavior and weather indicate continued growth is likely.

Management Intention - The intent of this MAP is to minimize impact to private property, infrastructure, and critical grazing lands.

Actions:
Management Action Considerations
• Helena Lewis & Clark NF Agency Administrators
• IMT Liaison Officer
• Broadwater County Sheriff Dept
• Operations and Broadwater County Sheriff will evaluate current pre-evacuation and/or evacuations and consider new evacuation notices of identified areas.
• Operations will develop and implement structure protection plans and point protection around structures.
• Communicate updates to interagency partners, private landowners, law enforcement.

Resources:
Resources Recommended for Values Protection
• Operations will develop list of critical resources needed to protect above values at risk and begin initiating protection actions.
• Structure Protection Specialists
• Liaison Officer, Public Information Officer

MAP - 17

Incident Name: Woods Creek
Code: MT-HLF-258
Shape: MAP 17
Activated: Pending
Deactivated:

Condition:
If the uncontained fire edge becomes active and moves south, fire will advance along the Forest/State boundary and in the vicinity of the existing indirect door lines on private land and along the North Fork Elk River. Intention of MAP - 17 is to consider the evacuation of the identified area. Evaluate the actions needed to protect the labeled values at risk.

Trigger Condition - If the fire is projected to cross the MAP within the next 24 hours and expected fire behavior and weather indicate continued growth is likely.

Management Intention - The intent of this MAP is to minimize impact to private property, infrastructure, and critical grazing lands.

Actions:
Management Action Considerations
• Helena Lewis & Clark NF Agency Administrators
• IMT Liaison Officer
• Broadwater County Sheriff Dept
• Operations and Broadwater County Sheriff will evaluate current pre-evacuation and/or evacuations and consider new evacuation notices of identified areas.
• Operations will develop and implement structure protection plans and point protection around structures.
• Communicate updates to interagency partners, private landowners, law enforcement.

Resources:
Resources Recommended for Values Protection
• Operations will develop list of critical resources needed to protect above values at risk and begin initiating protection actions.
• Structure Protection Specialists
• Liaison Officer, Public Information Officer

MAP - 18

Incident Name: Woods Creek
Code: MT-HLF-258
Shape: MAP 18
Activated: Pending
Deactivated:

Condition:
If the uncontained fire edge becomes active and moves south, fire will advance along the Forest/State boundary and in the vicinity of the existing indirect door lines on private land and along the North Fork Elk River. Intention of MAP - 18 is to consider the evacuation of the identified area. Evaluate the actions needed to protect the labeled values at risk.

Trigger Condition - If the fire is projected to cross the MAP within the next 24 hours and expected fire behavior and weather indicate continued growth is likely.

Management Intention - The intent of this MAP is to minimize impact to private property, infrastructure, and critical grazing lands.

Actions:
Management Action Considerations
• Helena Lewis & Clark NF Agency Administrators
• IMT Liaison Officer
• Broadwater County Sheriff Dept
• Operations and Broadwater County Sheriff will evaluate current pre-evacuation and/or evacuations and consider new evacuation notices of identified areas.
• Operations will develop and implement structure protection plans and point protection around structures.
• Communicate updates to interagency partners, private landowners, law enforcement.

Resources:
Resources Recommended for Values Protection
• Operations will develop list of critical resources needed to protect above values at risk and begin initiating protection actions.
• Structure Protection Specialists
• Liaison Officer, Public Information Officer

MAP - 12

Incident Name: Woods Creek
Code: MT-HLF-258
Shape: MAP 12 - Thomas Creek
Activated: 8/12/21
Deactivated:

Condition:
Values at Risk - Firefighter and public safety, residents from Park Gulch area, residents, cabins, and structures. Infrastructure northwest of Diamond City. Intention of MAP - 12 is to consider the evacuation of the identified area. Evaluate the actions needed to protect the labeled values at risk.

Trigger Condition - If the fire is projected to cross the MAP within the next 24 hours and expected fire behavior and weather indicate continued growth is likely.

Actions:
Management Action Considerations
• Helena Lewis & Clark NF Agency Administrators
• IMT Liaison Officer
• Broadwater County Sheriff Dept
• Operations and Broadwater County Sheriff will evaluate current pre-evacuation and/or evacuations and consider new evacuation notices of identified areas.
• Operations will develop and implement structure protection plans and point protection around structures.
• Communicate updates to interagency partners, private landowners, law enforcement.

Resources:
Resources Recommended for Values Protection
• Operations will develop list of critical resources needed to protect above values at risk and begin initiating protection actions.
• Structure Protection Specialists
• Liaison Officer, Public Information Officer

MAP - 13

Incident Name: Woods Creek
Code: MT-HLF-258
Shape: MAP 13 - Confederate Gulch
Activated: 8/12/21
Deactivated:

Condition:
Values at Risk - Firefighter and public safety, occupants from Park Gulch area, residents, cabins, and structures. Infrastructure northwest of Diamond City. Intention of MAP - 13 is to consider the evacuation of the identified area. Evaluate the actions needed to protect the labeled values at risk.

Trigger Condition - If the fire is projected to cross the MAP within the next 24 hours and expected fire behavior and weather indicate continued growth is likely.

Actions:
Management Action Considerations
• Helena Lewis & Clark NF Agency Administrators
• IMT Liaison Officer
• Broadwater County Sheriff Dept
• Operations and Broadwater County Sheriff will evaluate current pre-evacuation and/or evacuations and consider new evacuation notices of identified areas.
• Operations will develop and implement structure protection plans and point protection around structures.
• Communicate updates to interagency partners, private landowners, law enforcement.

Resources:
Resources Recommended for Values Protection
• Operations will develop list of critical resources needed to protect above values at risk and begin initiating protection actions.
• Structure Protection Specialists
• Liaison Officer, Public Information Officer

MAP - 10

Incident Name: Woods Creek
Code: MT-HLF-258
Shape: MAP 10 - Upper Birch
Activated: 8/12/21
Deactivated:

Condition:
Values at Risk - Firefighter and public safety, residents along Hwy 30 and Hwy 60 from Birch Creek north to Camas Creek Rd. Intention of MAP - 10 is to consider the evacuation of the identified area. Evaluate the actions needed to protect the labeled values at risk.

Trigger Condition - If the fire is projected to cross the MAP in the Upper Birch Creek area within the next 24 hours and expected fire behavior and weather indicate continued growth is likely.

Actions:
Management Action Considerations
• Helena Lewis & Clark NF Agency Administrators
• IMT Liaison Officer
• Broadwater County Sheriff Dept
• Operations and Broadwater County Sheriff will evaluate current pre-evacuation and/or evacuations and consider new evacuation notices of identified areas.
• Operations will develop and implement structure protection plans and point protection around structures.
• Communicate updates to interagency partners, local community leaders, private landowners, law enforcement.

Resources:
Resources Recommended for Values Protection
• Operations will develop list of critical resources needed to protect above values at risk and begin initiating protection actions.
• Structure Protection Specialists
• Liaison Officer, Public Information Officer

MAP - 11

Incident Name: Woods Creek
Code: MT-HLF-258
Shape: MAP 11 - Upper Birch
Activated: 8/12/21
Deactivated:

Condition:
Values at Risk - Firefighter and public safety, residents along Hwy 30 and Hwy 60 from Birch Creek north to Camas Creek Rd. Intention of MAP - 11 is to consider the evacuation of the identified area. Evaluate the actions needed to protect the labeled values at risk.

Trigger Condition - If the fire is projected to cross the MAP in the Upper Birch Creek area within the next 24 hours and expected fire behavior and weather indicate continued growth is likely.

Actions:
Management Action Considerations
• Helena Lewis & Clark NF Agency Administrators
• IMT Liaison Officer
• Broadwater County Sheriff Dept
• Operations and Broadwater County Sheriff will evaluate current pre-evacuation and/or evacuations and consider new evacuation notices of identified areas.
• Operations will develop and implement structure protection plans and point protection around structures.
• Communicate updates to interagency partners, local community leaders, private landowners, law enforcement.

Resources:
Resources Recommended for Values Protection
• Operations will develop list of critical resources needed to protect above values at risk and begin initiating protection actions.
• Structure Protection Specialists
• Liaison Officer, Public Information Officer

MAP - 8

Incident Name: Woods Creek
Code: MT-HLF-258
Shape: MAP 8 - Grassy Mountain
Activated: 8/12/21
Deactivated:

Condition:
Values at Risk - Firefighter and public safety, communications sites, power infrastructure, Grassy Mountain area private structures, and private residences. Intention of MAP - 8 is to evaluate, prioritize and implement the needed actions to protect the labeled values at risk, protection plans and consider implementing evacuations.

Trigger Condition - If the fire is projected to cross the MAP from the Deep Fire following deep creek to the north to the divide, and then down there North Fork of Snake Creek, within the next 24 hours and expected fire behavior and weather indicate continued growth is likely.

Actions:
Management Action Considerations
• Helena Lewis & Clark NF Agency Administrators
• IMT Liaison Officer
• Broadwater County Sheriff Dept
• Operations and Broadwater County Sheriff will evaluate current pre-evacuation and/or evacuations and consider new evacuation notices of identified areas.
• Operations will develop and implement structure protection plans and point protection around structures.
• Communicate updates to interagency partners, local community leaders, private landowners, law enforcement.

Resources:
Resources Recommended for Values Protection
• Operations will develop list of critical resources needed to protect above values at risk and begin initiating protection actions.
• Structure Protection Specialists
• Liaison Officer, Public Information Officer

MAP - 9

Incident Name: Woods Creek
Code: MT-HLF-258
Shape: MAP 9 - Sprinkle Gulch
Activated: 8/12/21
Deactivated:

Condition:
Values at Risk - Firefighter and public safety, residents in the Sprinkle Gulch area. Intention of MAP - 9 is to evaluate and implement the needed actions to protect the labeled values at risk, protection plans and consider implementing evacuations.

Trigger Condition - If the fire is projected to cross the MAP in the Sprinkle Gulch area within the next 24 hours and expected fire behavior and weather indicate continued growth is likely.

Actions:
Management Action Considerations
• Helena Lewis & Clark NF Agency Administrators
• IMT Liaison Officer
• Broadwater County Sheriff Dept
• Operations and Broadwater County Sheriff will evaluate current pre-evacuation and/or evacuations and consider new evacuation notices of identified areas.
• Operations will develop and implement structure protection plans and point protection around structures.
• Communicate updates to interagency partners, local community leaders, private landowners, law enforcement.

Resources:
Resources Recommended for Values Protection
• Operations will develop list of critical resources needed to protect above values at risk and begin initiating protection actions.
• Structure Protection Specialists
• Liaison Officer, Public Information Officer