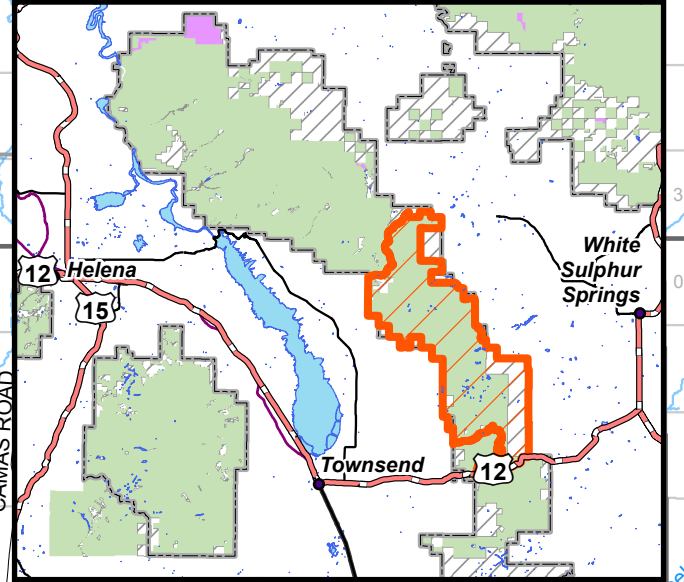
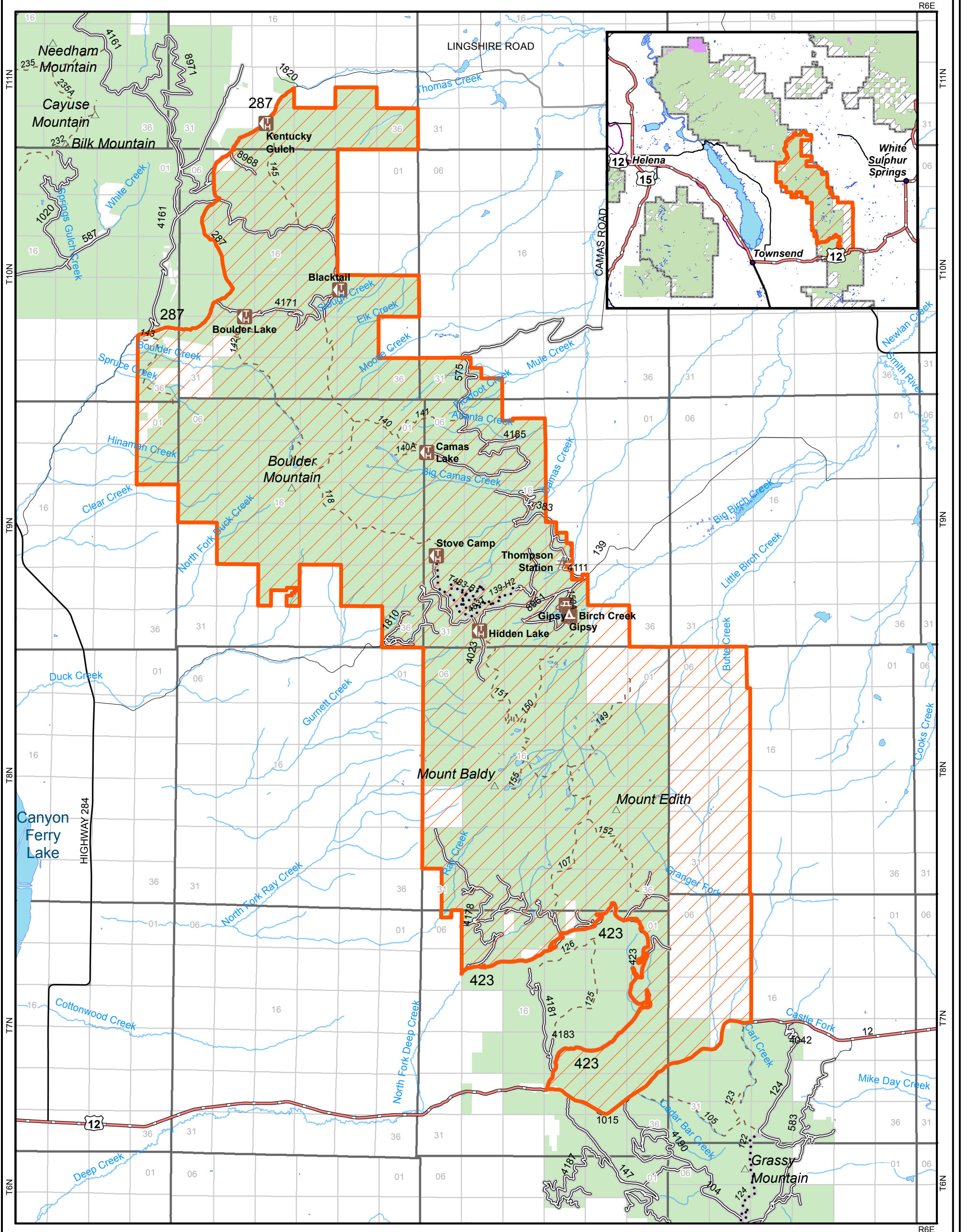
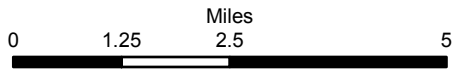


# Woods Creek Fire Area Closure Forest Order 01-15-11-21-34

Townsend Ranger District

- Area Closure
- Major Highways
- Highways
- Non-motorized Trail
- Other Public Route
- USFS Motorized Routes
- State or US Hwy
- △ Mt or Peak
- USFS
- Motorized Trail



The Forest Service uses the most current and complete data available. GIS data and product accuracy may vary. They may be: developed from sources of differing accuracy, accurate only at certain scales, based on modeling or interpretation, incomplete while being created or revised, etc. Using GIS products for purposes other than those, for which they were created, may yield inaccurate or misleading results. The Forest Service reserves the right to correct, update, modify, or replace, GIS products without notification. For more information please contact:  
 Helena-Lewis and Clark National Forest, 2880 Skyway Drive, Helena, MT 59602, Phone (406) 449-5201  
 By: jfraser, 9/3/2021  
 T:\FS\FNS\HelenaLewisClark\Program\6800\Information\Mgmt\GIS\ClosureMaps\2021\_WoodsCreekFire\MXD\WoodsCreekFireAreaClosure\_20210827\_11x17.mxd\WoodsCreekFireAreaClosure\_20210827\_11x17