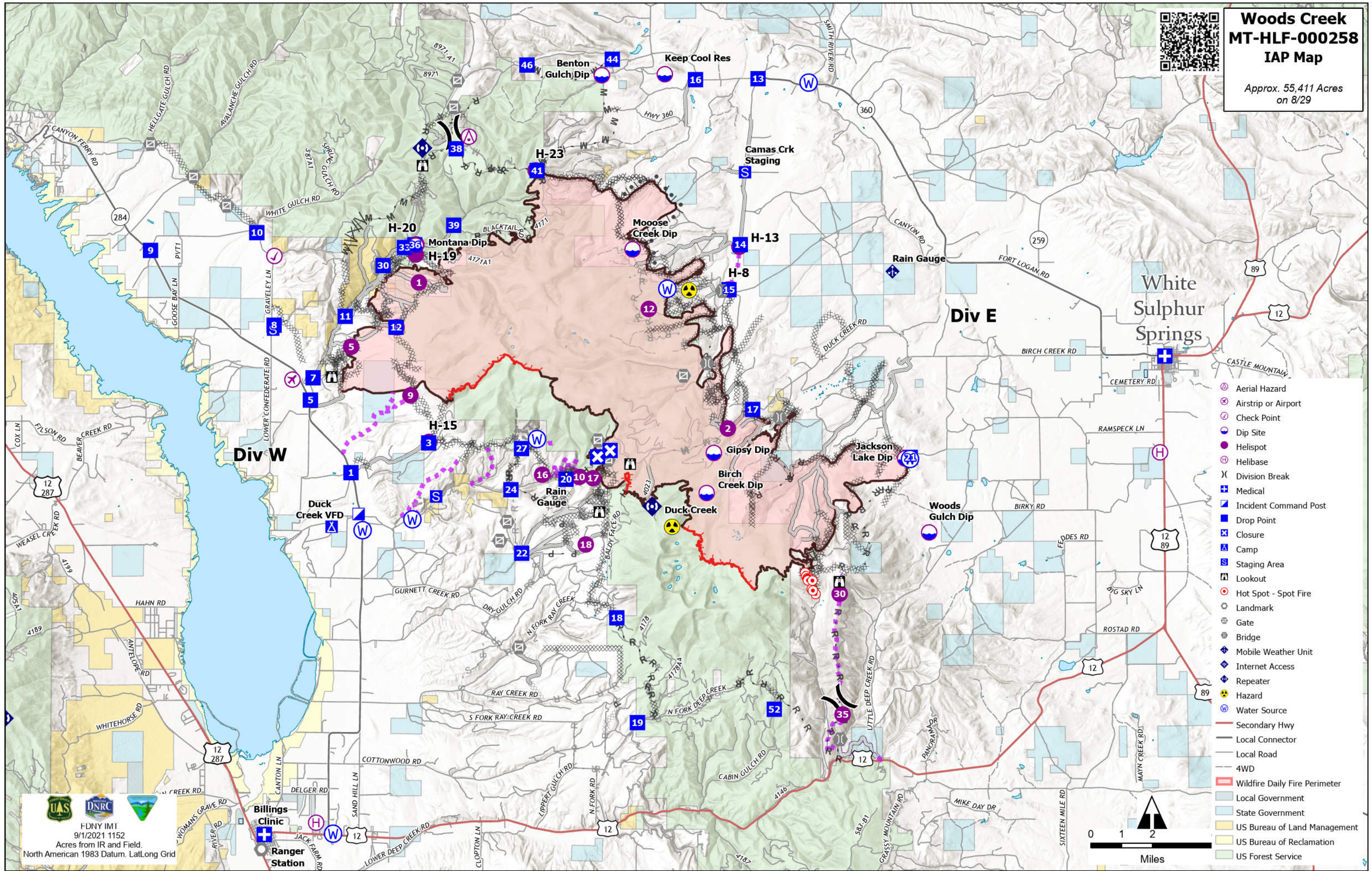




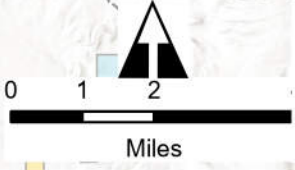
Woods Creek MT-HLF-000258 IAP Map

Approx. 55,411 Acres
on 8/29



- Aerial Hazard
- Airstrip or Airport
- Check Point
- Dip Site
- Helispot
- Helibase
- Division Break
- Medical
- Incident Command Post
- Drop Point
- Closure
- Camp
- Staging Area
- Lookout
- Hot Spot - Spot Fire
- Landmark
- Gate
- Bridge
- Mobile Weather Unit
- Internet Access
- Repeater
- Hazard
- Water Source
- Secondary Hwy
- Local Connector
- Local Road
- 4WD
- Wildfire Daily Fire Perimeter
- Local Government
- State Government
- US Bureau of Land Management
- US Bureau of Reclamation
- US Forest Service

FDNY IMT
 9/1/2021 1152
 Acres from IR and Field.
 North American 1983 Datum. Lat/Long Grid



Billings Clinic
 Ranger Station