

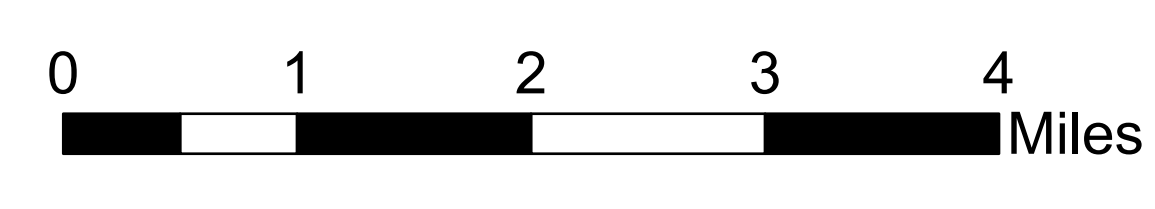
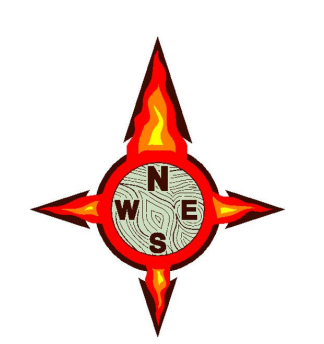
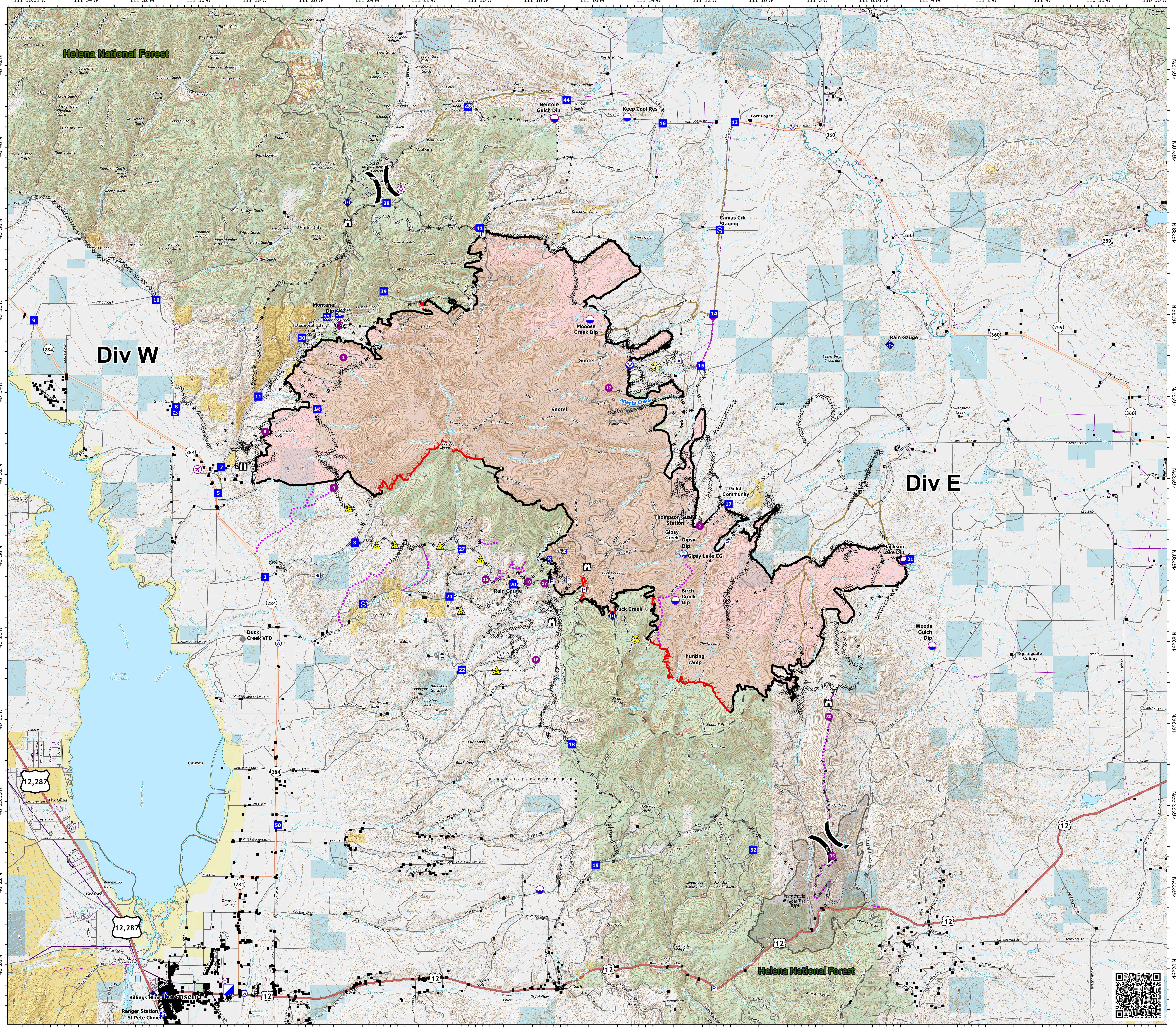
Woods Creek Fire MT-HLF-000258 Operations Map

Approx. 55,448 acres (+16ac)
@ 2230, 9/13 IR



Operational Shift
09/14/21 @1130

- Structures
- Aerial Hazard
- Airstrip or Airport
- Check Point
- Dip Site
- Helispot
- Helibase
- Division Break
- Medical
- Incident Command Post
- Drop Point
- Closure
- Staging Area
- Lookout
- Other
- Landmark
- Gate
- Fire Station
- Bridge
- Mobile Weather Unit
- Internet Access
- Repeater
- Safety Zone
- Hazard
- Water Source
- Trail
- Completed Dozer Line
- Completed Fuel Break
- Completed Hand Line
- Completed Mixed Construction Line
- Completed Plow Line
- Completed Road as Line
- Planned Dozer Line
- Planned Mixed Construction Line
- Planned Road as Line
- Planned Secondary Line
- Access or Improved Road
- Other
- Repair Line
- Road Repair
- Route
- Fire Edge
- Contained Line
- Wildfire Daily Fire Perimeter
- Fire History
- US Route
- State Route
- Local Road
- 4WD
- Transmission Line
- Distribution Line



Date Exported: 9/14/2021 11:29 AM
North American 1983 Datum, Lat/Long Grid

