

Woods Creek Fire MT-HLF-258

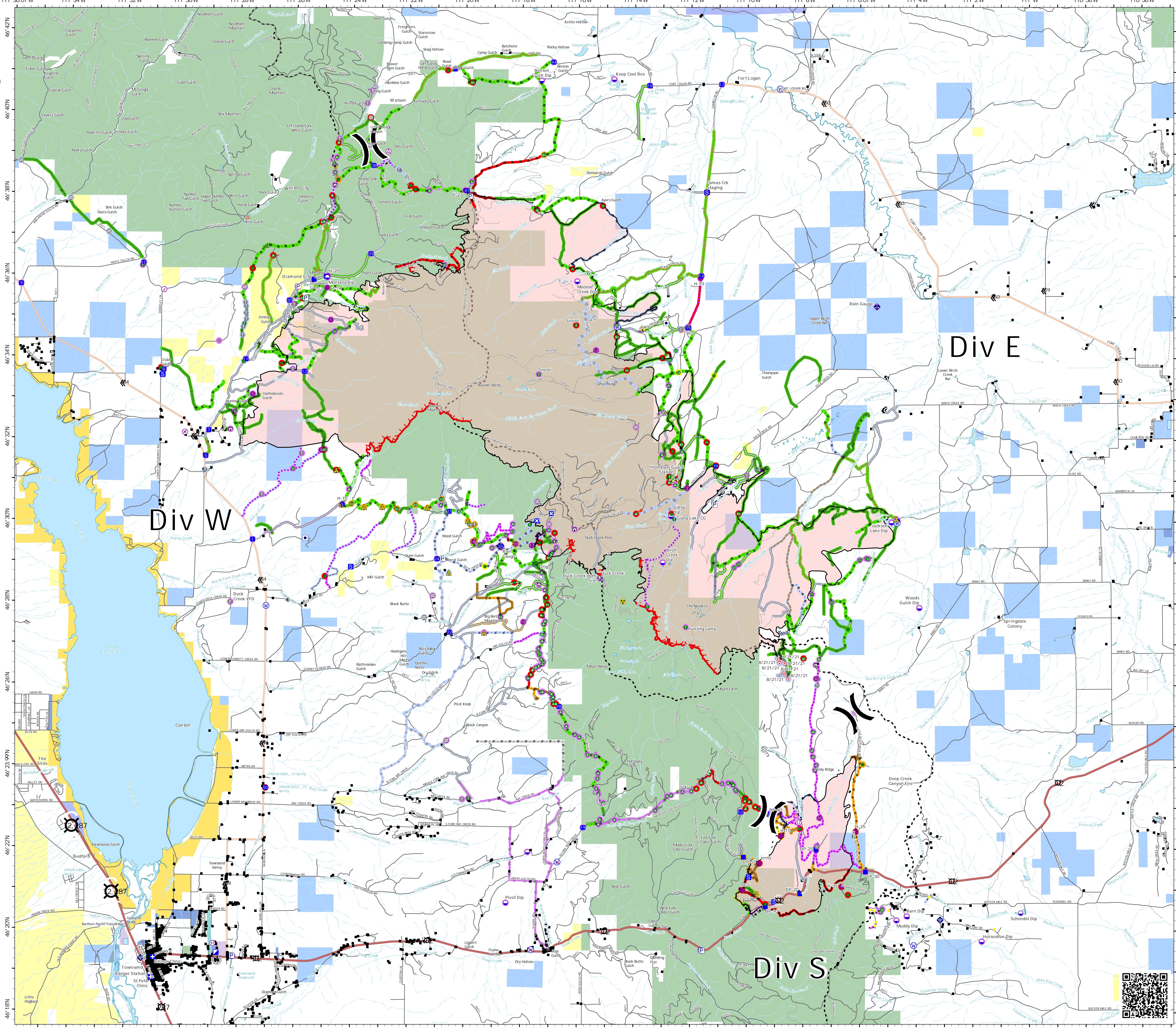
Repair By Ownership

Approx. 55,449 acres (+ 1ac)
9/21 @ 2237, from IR

Operational Shift
10/01/2021



- Accountable Property**
 - Other Property
- Air Operations**
 - Aerial Hazard
 - Airship or Airport
 - Check Point
 - Dip Site
 - Helipad
 - Helibase
 - Unimproved Landing Area
- Assignment Breaks**
 - Division Break
- Logistics**
 - Medical
 - Incident Command Post
 - Drop Point
 - Closure
 - Staging Area
- Operations**
 - Lookout
- Fire**
 - Hot Spot - Spot Fire
- Reference**
 - Value at Risk
 - Other
 - Landmark
 - Gate
 - Fire Station
 - Bridge
- Repair**
 - Water Development or Draft Site
 - Stream Crossing
 - Road Repair
 - Resource Location
 - Repair Point
 - Landing or Log Deck
 - Fence - Out/Damaged
 - Diesel Pumphouse
 - Culvert
 - Clean up Area
- Communications**
 - Mobile Weather Unit
 - Internet Access
 - Repeater
- Safety**
 - Safety Zone
 - Hazard
- Water**
 - Water Source
 - Restricted Water Source
- Ops Completed**
 - Completed Burnout
 - Completed Doser Line
 - MWV Completed Fuel Break
 - H - H Completed Hand Line
 - M - M Completed Mixed Construction Line
 - P - P Completed Flow Line
 - R - R Completed Road as Line
 - S - S Planned Secondary Line
- Ops Planned**
 - M - M Planned Mixed Construction Line
 - R - R Planned Road as Line
 - S - S Planned Secondary Line
- Reference**
 - Access or Improved Road
 - Highlighted Feature
 - Other
- Repair**
 - Road Repair
 - Road Repair
- Air Ops**
 - Route
 - Fire Edge
- Fire Perimeter**
 - Fire Edge
- Reference**
 - Structures
 - Completed - Inspected
 - Completed - Ready for Inspection
 - In Progress
 - Repair Needed
 - No Repair Needed
 - Other - See Comments
 - Unknown
 - Completed - Inspected
 - Completed - Ready for Inspection
 - In Progress
 - Repair Needed
 - No Repair Needed
 - Other - See Comments
 - Unknown
- TNMFRC**
 - US Route
 - State Road
 - Local Road
 - 4WD
- Polygon Type**
 - Wildfire Daily Fire Perimeter
 - County Boundary
 - Public Lands
- OWNER**
 - Bureau of Indian Affairs Trust Land
 - City Government
 - County Government
 - Local Government
 - Montana Dept of Corrections
 - Montana Dept of Natural Resources Water Projects
 - Montana Dept of Transportation
 - Montana Fish, Wildlife, and Parks
 - Montana State Trust Lands
 - Montana University System
 - National Park Service
 - State of Montana
 - US Army Corps of Engineers
 - US Bureau of Land Management
 - US Bureau of Reclamation
 - US Dept of Agriculture
 - US Dept of Defense
 - US Fish and Wildlife Service
 - US Forest Service
 - US Government
 - Unknown



Div W

Div E

Div S

