

Incident Action Plan



Day Operational Period
Sunday 08/01/2021 0600 - 2100

Night Operational Period
Sunday 08/01/2021 1800 – Monday 08/02/2021 1000

American Fork	Woods Creek	Divide Complex
MT-HLF-005087 P1N57E (0115)	MT-HLF-000258 P1N5JY (0115)	MT-HLF-005079 P1N5FU (0115)

2021.divide.finance@firenet.gov
2021.americanfork.finance@firenet.gov

Morning Ops Briefing (0700) Zoom ID: 160 768 9452
Dial in # 1-551-285-1373

Check-in



American Fork Maps



Divide Complex Maps



Woods Creek Maps



1 INCIDENT NAME American Fork Fire, Divide Complex and Woods Creek	2. OPERATIONAL PERIOD: DAY / NIGHT 08/01/2021 Sunday 0600 - 08/02/2021 Monday 1000	2. DATE PREPARED 07/31/2021	3. TIME PREPARED 1800
--	---	---------------------------------------	---------------------------------

3. GENERAL CONTROL OBJECTIVES FOR THE INCIDENT (INCLUDE ALTERNATIVES)

Management Objectives

- 1) Protection of human life and safety is the first priority for all actions taken on a wildfire and can overrule all other strategic/management objectives and incident requirements.
- 2) Base management decisions on meeting objectives while also minimizing the risk of COVID-19 exposures to responders and the public. COVID-19 considerations may alter how you meet goals but should not lead to higher risk tactics.
- 3) Maintain and strengthen relationships with the Helena-Lewis and Clark NF, Custer-Gallatin NF, private landowners, the public, cooperators and partners by providing timely and accurate information.
- 4) Use management actions that ensure fire personnel safety from contact with bears through compliance with the Food Storage Special Order.
- 5) Protect the unique attributes of impacted watersheds through actions that minimize sedimentation and invasive species movement.
- 6) Protect impact to cultural resources through consultation with local forest specialists.

Control Objectives

Divide Complex

- 1) Protection of human life and safety is the first priority for all actions taken and shall override all other incident control objectives. Evaluate risk vs. benefit in strategic and tactical planning and only commit operational resources to actions that have the highest probability of success.
- 2) Protect Tenderfoot Experimental Forest infrastructure within the tenderfoot drainage.
- 3) Protect the communities of Belt Park, Deer Creek Estates, Monarch, Neihart and the Hwy 89 corridor to avoid loss or damage to private lands and critical infrastructure.
- 4) Use mechanized equipment to establish and improve control lines where approved to minimize risk and exposure to firefighting resources.
- 5) Provide initial attack resources to respond to any new ignitions within the TFR area to limit potential size and growth.

American Fork Fire

- 1) Protection of human life and safety is the first priority for all actions taken and shall override all other incident control objectives. Evaluate risk vs. benefit in strategic and tactical planning and only commit operational resources to actions that have the highest probability of success.
- 2) Keep fire on Forest Service lands to protect and limit impact to adjacent landowner property and values at risk.
- 3) Provide initial attack resources to respond to any new ignitions within the TFR area to limit potential size and growth.

4. Operational Period Command Emphasis:

***** L C E S *****

5. General Situational Awareness:

****Erratic and gusty winds to 45 mph possible with any shower or storm. Keep in mind gusty winds are possible far away from the nearest precipitation.****

WEATHER DISCUSSION: Mostly clear skies in the morning will give way to increasing clouds in the afternoon. Moisture pushing in from the southwest will enhance thunderstorm chances through the day. High temps will remain above average with min RH's in 20's. The primary threats will be erratic and gusty winds to 45 mph with any nearby rainfall. Ridgetop winds will turn from the southeast and remain gusty while sheltered slopes will remain terrain driven. Good RH recoveries are expected tonight.

7. GENERAL MESSAGE

See the attached Safety Message for more information.

- | | | |
|--|--|---|
| <input checked="" type="checkbox"/> ORGANIZATION LIST (ICS 203) | <input checked="" type="checkbox"/> MEDICAL PLAN (ICS 206) | <input checked="" type="checkbox"/> WEATHER SPOT FORECAST |
| <input checked="" type="checkbox"/> ASSIGNMENT LIST (ICS 204) | <input checked="" type="checkbox"/> AIR OPS. SUMMARY (ICS 220) | <input checked="" type="checkbox"/> FIRE BEHAVIOR FORECAST |
| <input checked="" type="checkbox"/> COMMUNICATION PLAN (ICS 205) | <input checked="" type="checkbox"/> SAFETY MESSAGE | <input checked="" type="checkbox"/> INCIDENT EMERGENCY PLAN |

ICS 202	9. PREPARED BY (PLANNING SECTION CHIEF) Dave Berens <i>Dave Berens</i>	10. APPROVED BY (INCIDENT COMMANDER) Steve Parrish <i>Steve Parrish</i>
---------	--	---

1. Incident Name: American Fork Fire, Divide Complex, and Woods Creek Fire		2. Operational Period: DAY-NIGHT To: MON 08/02/2021 1000		From: SUN 08/01/2021 0600	
3. Incident Commander(s) and Command Staff:			7. Operations Section:		
IC/UCs	Steve Parrish, Pat Pearson (t)	Ops Section Chief	Peter Myers, David Walker, Mike Davis Shane Sturgill (t), Brian Browning (t)		
Safety Officer	Tommy Hawkins, Michael Cook, Jose Castro (t), John Fugitt (t)	Planning Ops	Troy Floyd, Tyler VanOrmer (t)		
Information Officer	Catherine Hibbard, Bonnie Strawser, John Nichols, Tim Webb (t)	Branch	I American Fork		
Liaison Officer	Divide Complex-David Parker, American Fork -Jim Cooper, Woods Creek -Ed Christopher (t), Paul Stevens, Stephanie Allison (t)	Branch Director	Chad Cook		
Covid Coordinator	Birk Roseman	Division/Group	Mike Davis		
4. Agency/Organization Representatives:			Division/Group	A	Abe Philipson
USFS	Carol Hatfield, Corey Lewellen, Mike Welker	Division/Group	M	Jeremy Kolasks, Curt Littlefield (t)	
DNRC	Jocee Hedrick, Heidi Crum	Division/Group	P	John Fry, Jason Martin(t)	
			Branch	II Divide Complex - Ellis	
			Field Ops	Mike Davis	
5. Planning Section:			Division/Group	E/Q	Brian Delasantas
Chief	David Berens, Jason Braunstein (t)	Branch	III Divide Complex - Balsinger		
Resources Unit	Jessica Valdez, Brittany Phillips (Virtual), Ed Bratcher (t), Sue Sobieski (t)	Branch Director	Mike Davis, Shane Sturgill (t)		
		Division/Group	I	Mike Ward, Alex Scronze (t)	
		Division/Group	T	Steve Grader, Matthew Klindt (t), Ethan Heugen (t)	
Situation Unit	Eric Schmeckpeper	Division/Group	U	Wayne Rushing Gabriel Templeton (t)	
Training Specialist	Al Hoke (virtual)	Division/Group	Structure Protection	Brad Harden (t)	
Demobilization Unit	Marg Olson	Division/Group	IA	Mike Willardson TFLD	
Fire Behavior Analyst	Greg Titus	Division/Group	NIGHT SHIFT	Darin Groff TFLD	
GIS Specialist	Tommy Barnes, Clint Roberts	Branch	IV Woods Creek		
Tech Support Specialist	Joe Ashby, Tony Farmer, Bridgette Webb (t)	Branch Director	Brian Browning		
		Field Ops	Dave Walker		
Incident Meteorologist	Ian Morrison	Division/Group	AA/MM	Chad Stover	
Status Check-in	Laura Vann, Sara Bridges (t), Kandra Scott (t - virtual)	Division/Group	SS/WW	Craig Robertson, TK Kennedy, Craig Kastrezewski (t)	
		Division/Group	QQ	Jason Jensen, Brad Hardesty (t)	
6. Logistics Section:			Division/Group	Night Shift	Anthony Martinez
Chief	Leslie Morgan, Jane Arteaga, Sally Browning, Chris Revels (t)	Division/Group			
			Air Operations Branch		
Support Branch			Air Ops Branch Dir.	John Fish,	
Supply Unit	Nina Donley		ASGS	Jack Finley	
Receiving/Dist. Manager	Lisa Meekins, Andrew Thompson (t)				
Facilities Unit	Susanne Adams		Air Tac Group Sup	David Robinson, Chad Smitherman (t)	
Ground Support Unit	Pat Wright				
Security Unit	Karen Bradford, Michael Esters (t)	8. Finance/Administration Section:			
Service Branch			Chief	Sandra Morris, John Warner (t)	
Communication Unit	Jerry Patrick, David Radzivil (t)	Time Unit	Kimberly Winkler		
Ordering Manager	Darius Truss, Coreen Francis (t)	Procurement Unit	Shawn Hendrickson (t)		
Medical Unit	Fred Adler, Richard D'Orazio (t)	Comp/Claims Unit	Diane Lowder		
Food Unit	David Malone (t)	Cost Unit			
9. Prepared by: Name: <i>D. B. [Signature]</i> Position/Title: <i>IC/UC</i> Signature: <i>[Signature]</i>					
ICS 203	IAP Page _____	Date/Time:	7/31/21 2100		

Human Resource Message

The mission of the Red Team is to safely, effectively and efficiently manage the American Fork Fire, Divide Complex and Woods Creek Fire by maintaining a team of skilled and productive personnel. During this incident we will strive to successfully complete our mission and achieve our objectives while creating a positive, drug and alcohol free work environment for all assigned incident personnel.

Consumption of drugs that alter decision making abilities, such as marijuana and alcohol, is prohibited while assigned to the incident.

The Red Team fully supports EEO and will not tolerate sexual harassment or any form of discrimination!

All inappropriate behavior will be dealt with promptly. Disciplinary action and reporting back to an individual's home unit will be initiated as necessary.

Please report any incidents of inappropriate behavior to your supervisor, Pat Pearson or myself immediately.

Steve Parrish, Incident Commander





←Submit Wx Obs!

INCIDENT Weather Forecast



View Local Obs →

FORECAST NO: 10
PREDICTION FOR: Sunday

NAME OF FIRE: Am Fork/Divide/Woods Crk
UNIT: Helena/Lewis & Clark NF and Custer Gallatin NF
SHIFT DATE: August 01, 2021
SIGNED: Ian Morrison

FORECAST ISSUED: 1800 July 31, 2021

Incident Meteorologist

****Erratic and gusty winds to 45 mph possible with any shower or storm. Keep in mind gusty winds are possible far away from the nearest precipitation.****

WEATHER DISCUSSION: Mostly clear skies in the morning will give way to increasing clouds in the afternoon. Moisture pushing in from the southwest will enhance thunderstorm chances through the day. High temps will remain above average with min RH's in 20's. The primary threats will be erratic and gusty winds to 45 mph with any nearby rainfall. Ridgetop winds will turn from the southeast and remain gusty while sheltered slopes will remain terrain driven. Good RH recoveries are expected tonight.

FOR THE DIVIDE COMPLEX, AMERICAN FORK AND WOODS CREEK:

WEATHER: Above normal temperatures with a chance of afternoon showers and thunderstorms. Isolated areas of wetting rain. *Erratic wind gusts to 45 mph possible with any shower/storm.*

TEMPERATURES: 75-80 ridges and 85-90 valleys

HUMIDITY: Minimums 22 to 30%

20 FT WINDS:

RIDGETOP - ESE 10 to 20 mph with gusts to 30 mph for exposed locations.

PROTECTED SLOPES - Upslope/upvalley at 8 to 12 mph.

LOWER ELEVATIONS - SE 10 to 20 mph with higher gusts.

HAINES INDEX: 3 (Very low chance of plume dominated activity)

CHANCE OF WETTING RAIN (> .10): 15%

LAL: 2

STABILITY/INVERSION: Weak inversion breaking by 0900.

OUTLOOK FOR TONIGHT:

Increasing clouds and showers overnight with a slight chance of thunderstorms. RH recoveries will reach 50-60%. Temperatures will fall to the low mid 60s for most areas and upper 50s for the lowest elevations. Downslope/downvalley winds 4-8 mph. Ridgetop and exposed areas SE winds 10 to 15 mph.

OUTLOOK FOR MONDAY AND TUESDAY:

Slow moving showers and thunderstorms will move in from the southwest Monday bringing the potential for **heavy rainfall and flash flooding**. Winds will turn from the west at 10 to 20 mph and high temperatures will be in the upper 70s with lows in the 60's. Tuesday, showers likely with mostly cloudy skies. West winds 10 to 20 mph.

FIRE BEHAVIOR FORECAST

FORECAST NUMBER: 10	TYPE OF FIRE: Wildland
FIRE NAME: Divide Complex, American Fork, & Wood Creek	OPERATIONAL PERIOD: Day & Night Shift
DATE ISSUED: 07/31/2021 TIME ISSUED: 1600	SHIFT DATE: Sunday, August 1, 2021
UNIT: Helena, Lewis & Clark, and Custer Gallatin NF	SIGNED: Greg Titus, FBAN

WEATHER SUMMARY:

See weather forecast in IAP for detailed forecast.

Local Thresholds – Watch Out

20-foot winds over **13 mph**, RH under **17%**, Temperature over **82°**, 1,000-hour fuel moisture less than **14%**.

FIRE BEHAVIOR:

GENERAL: The dominant fuel types found in the fire areas are heavy mixed conifer stands and short grass outside the forested areas. Fuel moisture are at critical levels that can promote extreme fire behavior. Beware of approaching storms that may bring erratic winds ahead of the storm.

Fine Dead Fuel Moisture = 4-5%, 1,000 Hour Fuel Moisture = 6-8%, Live Fuel Moisture = 115-125%
Live fuels are nearly cured and very volatile.

ERC's are above the 97th percentile and at near record daily highs for RAWs in the area.

Fuel Model	Average Rate of Spread	Average Flame Length
Grass (GS2)	3 feet/minute 3 ch/hr	1 foot
Mixed Conifer (TU5)	17 feet/minute 20 ch/hr Extreme 31 ch/hr	10 feet Extreme 13 feet

Spotting can dramatically increase rates of spread. Possible spotting distance: 0.25 to 0.75 during gusts.
New spot fires can reach **15 acres** in one hour. Probability of Ignition = **80%**

Specific Areas of Concern:

Balsinger

Southeast corner (Div. I) fire has the potential to move south up the Tillinghast Creek drainage. Fire could move further into the Pilgrim Creek drainage to the northwest in Div. U. Also, in Div. U the fire will continue to move north down the west side of the Tillinghast Creek drainage.

American Fork

Fire will continue to move west in the Shields River drainage in Div. P. Areas of special concern are Crandell and Smith Creek. Additional fire from spotting across the Shields River is possible especially during gusty periods.

Woods Creek

In Div. W stringers of heavy timber east of Confederate Gulch are of concern as fire will burn readily in this heavy timber. Fire in Div Q will continue to move slowly down the Duck Creek drainage in the southeast area of the fire.

Ellis

No special areas of concern.

AIR OPERATIONS:

No issues for Air Operations this operational period. Light inversion will lift by 0900.

SAFETY:

Approaching storms can bring outflow winds that are gusty and variable in direction. Spotting and erratic fire behavior can occur due to these storm associated winds. Keep an eye on the sky.



Division/Group Assignment List (ICS 204 WF)

1. Incident Name:		American Fork		3.		Branch: I	Division/Group A
2. Operational Period:							
Date/Time From: 8/01/2021 0600 SUN		Date/Time To: 08/02/2021 1000 MON					
4. Operations Personnel							
BRANCH DIRECTOR		Chad Cook		FIELD OPERATIONS		Mike Davis	
DIVISION/GROUP SUPERVISOR		Abe Philipson		LEAD OPERATIONS PLANNING OPERATIONS		Pete Myers Troy Floyd	
5. Resources Assigned this Period							
Strike Team / Task Force / Resource Designator	LWD	Leader	Number Persons	Drop Off PT./Time	Pick Up PT./Time		
O-9 TFLD	08/04	Danny Lowell	1	American Fork Spike/ 0600	American Fork Spike/ 2100		
O-53 TFLD	07/30	Rock Byrd	1	American Fork Spike/ 0600	American Fork Spike/ 2100		
C-5 HC2 OREGON WOODS	08/03	Alex Tomchak	20	American Fork Spike/ 0600	American Fork Spike/ 2100		
C-19 HC2I BEAR JAW	08/11	Shelby Erickson	21	American Fork Spike/ 0600	American Fork Spike/ 2100		
E-11 ENG6 CASTLE MOUNTAIN				American Fork Spike/0600	American Fork Spike/2100		
E-19 ENG6 SOLOMON FIRE				American Fork Spike/0600	American Fork Spike/2100		
E-9 ENG6 TEXAS FIRE	08/05	Carlos Magana	2	American Fork Spike/ 0600	American Fork Spike/ 2100		
E-10 ENG6 CEDAR MOUNTAIN	08/03	Manson w/EMT	4	American Fork Spike/ 0600	American Fork Spike/ 2100		
E-30 WAT2 CASTLE MOUNTAIN	08/06	Brendan Zelanka	1	American Fork Spike/ 0600	American Fork Spike/ 2100		
E-60 EMTF	07/31	Gabriel Mizrahi	2	American Fork Spike/ 0600	American Fork Spike/ 2100		
SOF1		Tommy Hawkins	1	American Fork Spike/ 0600	American Fork Spike/ 2100		
READ – LEAD FOR BRANCH 1		Rob Grassfield	1	American Fork Spike/ 0600	American Fork Spike/ 2100		
ARCH		Doug Kosik	1	American Fork Spike/ 0600	American Fork Spike/ 2100		
6. Control Operations/Work Assignments:							
<p>Task: Continue to construct hand line off of established dozer line from DIV A/M break west toward Fawn Creek. Scout and identify potential contingency line location options to the south from Blackberry Creek west toward Sweet Grass Creek Ridge.</p> <p>Purpose: To improve containment along the fires southern edge and begin construction of a contingency line to the south of the main fire to protect private rangeland..</p> <p>End State: Keep fire north of the contingency line to prevent fire from crossing the National Forest boundary.</p>							
7. Special Instructions:							
<ul style="list-style-type: none"> Coordinate with READ before heavy equipment use: there is potential for sensitive resources in this area Please coordinate with READ if sensitive/archeological resources are located Please provide a picture of the artifact/site and a GPS location if found Do not post photos with Archeological resources that have location information <p>**IN THE EVENT OF AN IWI: CONTACT DIVIDE COMMUNICATIONS ON COMMAND IF UNREACHABLE, CONTACT BY PHONE AT 208-401-6806</p>							
8. Division/Group Communication Summary							
Function	Channel	RX Frequency N/W	RXTone/NAC	TX Frequency N/W	TX Tone/NAC	Mode	
Command	1	169.7500	107.2	167.1000	107.2	A	
Tactical	6	166.9875		166.9875	114.8	A	
Air to Ground	13 (Primary)	169.1500		169.1500		A	
Air to Ground	14 (Secondary)	172.7500		172.7500		A	
9. Prepared By (Resource Unit Leader)		Approved By (Planning Section Chief)			Date	Time	
Jessica Valdez		Jason Braunstein			7/31/2021		



Division/Group Assignment List (ICS 204 WF)

1. Incident Name:		3.			
American Fork		Branch: I	Division/Group M		
2. Operational Period:					
Date/Time From: 08/01/2021 0600 SUN	Date/Time To: 08/02/2021 1000 MON				
4. Operations Personnel					
BRANCH DIRECTOR	Chad Cook	FIELD OPERATIONS	Mike Davis		
DIVISION/GROUP SUPERVISOR	Jeremy Kolaski Curtis Littlefield (t)	LEAD OPERATIONS PLANNING OPERATIONS	Pete Myers Troy Floyd		
5. Resources Assigned this Period					
Strike Team/Task Force/Resource Designator	LWD	Leader	No. Persons	Drop Off PT./Time	Pick Up PT./Time
C-8 HC2 BLUE MOUNTAIN				American Fork Spike/ 0600	American Fork Spike/ 2100
E-2 ENG3 ROCKY MOUNTAIN	08/01	Sean Riphenburg	3	American Fork Spike/ 0600	American Fork Spike/ 2100
E-38 T4 ENG LOOMIS	08/03	Taylor Easley w/EMT	3	American Fork Spike/ 0600	American Fork Spike/ 2100
E-44 ENG4 GIST	07/30	Joe Hester Logging	3	American Fork Spike/ 0600	American Fork Spike/ 2100
E-7 ENG6 WHITEGRASS	08/03	Whitegrass	3	American Fork Spike/ 0600	American Fork Spike/ 2100
E-8 ENG6 STAX FACTOR	08/05	John Hoellerick	3	American Fork Spike/ 0600	American Fork Spike/ 2100
E-12 ENG6 FUNK FIRE	08/05	Greg Funk	3	American Fork Spike/ 0600	American Fork Spike/ 2100
E-13 ENG6 BISHOP	08/06	Edgar Johnson	3	American Fork Spike/ 0600	American Fork Spike/ 2100
E-14 ENG6 BISHOP	08/06	Anna Wildgun	3	American Fork Spike/ 0600	American Fork Spike/ 2100
E-22 ENG6 FLAT ROCK	08/10	Cody Blair	3	American Fork Spike/ 0600	American Fork Spike/ 2100
E-1 ENG6 R. CONSTRUCTION	08/01	Richard Deruche	3	American Fork Spike/ 0600	American Fork Spike/ 2100
SOF1		Tommy Hawkins	1	American Fork Spike/ 0600	American Fork Spike/ 2100
6. Control Operations/Work Assignments:					
Task: Hold previous firing operations on east line. Purpose: Ensure fire does not progress onto private property endangering valuable range assets. End State: Fire will be kept from progressing onto private property					
7. Special Instructions:					
<ul style="list-style-type: none"> Coordinate with READ before heavy equipment use: there is potential for sensitive resources in this area Please coordinate with READ if sensitive/archeological resources are located Please provide a picture of the artifact/site and a GPS location if found Do not post photos with Archeological resources that have location information 					
**IN THE EVENT OF AN IWI: CONTACT DIVIDE COMMUNICATIONS ON COMMAND IF UNREACHABLE, CONTACT BY PHONE AT 208-401-6806					
8. Division/Group Communication Summary					
Function	Channel	RX Frequency N/W	RXTone/NAC	TX Frequency N/W	TX Tone/NAC Mode
Command	1	169.7500	107.2	167.1000	107.2 A
Tactical	4	168.6125		168.6125	156.7 A
Air to Ground	13 (Primary)	169.1500		169.1500	A
Air to Ground	14 (Secondary)	172.7500		172.7500	A
9. Prepared By (Resource Unit Leader)		Approved By (Planning Section Chief)		Date	Time
Jessica Valdez		Jason Braunstein		7/31/2021	1900

Division/Group Assignment List (ICS 204 WF)

1. Incident Name:				3.			
American Fork				Branch: I		Division/Group P	
2. Operational Period:							
Date/Time From: 08/01/2021 0600 SUN		Date/Time To: 08/02/2021 1000 MON					
4. Operations Personnel							
BRANCH DIRECTOR		Chad Cook		FIELD OPERATIONS		Mike Davis	
DIVISION/GROUP SUPERVISOR		John Fry Jason Martin (t)		LEAD OPERATIONS PLANNING OPERATIONS		Pete Myers Troy Floyd	
5. Resources Assigned this Period							
Strike Team / Task Force / Resource Designator		LWD	Leader	Number Persons	Drop Off PT./Time	Pick Up PT./Time	
O-178 TFLD Joe Parr				1	American Fork Spike/ 0600	American Fork Spike/ 2100	
O-71 TFLD			Luke Fosness	1			
E-111 ENG6 E691 CIMARRON HILLS		08/11	Michael Wupper	3	American Fork Spike/ 0600	American Fork Spike/ 2100	
E-114 ENG6 E691		08/08	Zac Allen	5	American Fork Spike/ 0600	American Fork Spike/ 2100	
E-6 DNRC ENG6 SHILOH (VIPR) 215		08/11	Ron Thalacker	3	American Fork Spike/ 0600	American Fork Spike/ 2100	
E-15 DNRC ENG6 AURORA		08/08	Brad Danek	3	American Fork Spike/ 0600	American Fork Spike/ 2100	
E-17 DNRC ENG6 GREELEY BRUSH 6		08/11	Brian Benton	3	American Fork Spike/ 0600	American Fork Spike/ 2100	
E-16 DNRC ENG6 JOHNSON COE-121		08/11	Adam Robinson	3	American Fork Spike/ 0600	American Fork Spike/ 2100	
E-104 WT2 THOMPSON AND SONS INC.		08/12			American Fork Spike/ 0600	American Fork Spike/ 2100	
E- DNRC ENG6 LOVELAND FD				2	American Fork Spike/ 0600	American Fork Spike/ 2100	
E6 WAT2 PARK COUNTY							
LOCAL ENG 671			Josh Foster		American Fork Spike/ 0600	American Fork Spike/ 2100	
SOF1			Brad Lidell	1	American Fork Spike/ 0600	American Fork Spike/ 2100	
6. Control Operations/Work Assignments:							
Task: Continue with structure assessments and mitigation measures in the Shields River area and the Smith Creek Community.							
Purpose: Ensure any threats to structures are mitigated.							
End State: Threats to structures within the Shields River area will be mitigated.							
7. Special Instructions:							
<ul style="list-style-type: none"> • Coordinate with READ before heavy equipment use: there is potential for sensitive resources in this area • Please coordinate with READ if sensitive/archeological resources are located • Please provide a picture of the artifact/site and a GPS location if found • Do not post photos with Archeological resources that have location information 							
**IN THE EVENT OF AN IWI:							
CONTACT DIVIDE COMMUNICATIONS ON COMMAND							
IF UNREACHABLE, CONTACT BY PHONE AT 208-401-6806							
8. Division/Group Communication Summary							
Function	Channel	RX Frequency N/W	RXTone/NAC	TX Frequency N/W	TX Tone/NAC	Mode	
Command	1	169.7500	107.2	167.1000	107.2	A	
Tactical	5	163.7125		163.7125	146.2	A	
Air to Ground	13 (Primary)	169.1500		169.1500		A	
Air to Ground	14 (Secondary)	172.7500		172.7500		A	
9. Prepared By (Resource Unit Leader)			Approved By (Planning Section Chief)			Date	Time
Jessica Valdez 			Jason Braunstein 			7/31/2021	1900

Division/Group Assignment List (ICS 204 WF)

1. Incident Name:		3.				
DIVIDE COMPLEX-ELLIS		Branch: II	Division/Group E/Q			
2. Operational Period:						
Date/Time From: 08/01/2021 0600 SUN	Date/Time To: 08/02/2021 1000 MON					
4. Operations Personnel						
BRANCH DIRECTOR	Chad Cook	FIELD OPERATIONS	Mike Davis			
TFLD	Brian Delasantos (t)	LEAD OPERATIONS	Pete Myers			
		PLANNING OPERATIONS	Troy Floyd			
5. Resources Assigned this Period						
Strike Team / Task Force / Resource Designator	LWD	Leader	Number Persons	Drop Off PT./Time	Pick Up PT./Time	
E-35 T6 ENG PEANUT PIE	08/01	Dale Goodgun	3	DP10/0900	Showdown Spike/2100	
E-34 FRONT LINE EMS NONTRANSPORT	08/11	Corbin/Fallis	2	DP10/0900	Showdown Spike/2100	
6. Control Operations/Work Assignments:						
<p>Task: Monitor for rekindle and hotspots. Purpose: Keep fire within containment lines. End State: Fire will be kept within containment lines.</p>						
7. Special Instructions:						
<ul style="list-style-type: none"> Spike camp is located at Showdown Ski Resort. Utilize dozers on FS land as directed by ARCH/READ <p>**IN THE EVENT OF AN IWI: CONTACT DIVIDE COMMUNICATIONS ON COMMAND IF UNREACHABLE, CONTACT BY PHONE AT 208-401-6806</p>						
8. Division/Group Communication Summary						
Function	Channel	RX Frequency N/W	RXTone/NAC	TX Frequency N/W	TX Tone/NAC	Mode
Command	6	173.8125	107.2	168.4750	107.2	A
Command	7	173.0375	107.2	167.3250	107.2	A
Command	8	169.8125	107.2	164.6750	107.2	A
Tactical	5	166.7750	107.2	166.7750	107.2	A
Command	10	171.5000		164.0000	103.5	A
Air to Ground	13	166.6125		166.6125		A
9. Prepared By (Resource Unit Leader)		Approved By (Planning Section Chief)		Date	Time	
Jessica Valdez 		Jason Braunstein 		7/31/2021	1900	

Division/Group Assignment List (ICS 204 WF)

1. Incident Name:		3.			
DIVIDE COMPLEX-BALSINGER		Branch: III	Division/Group I		
2. Operational Period:					
Date/Time From: 08/01/2021 0600 SUN	Date/Time To: 08/02/2021 1000 MON				
4. Operations Personnel					
BRANCH DIRECTOR	Shane Sturgill (t)	FIELD OPERATIONS	Mike Davis		
DIVISION/GROUP SUPERVISOR	Mike Ward Alex Scronle (t)	LEAD OPERATIONS	Pete Myers		
		PLANNING OPERATIONS	Troy Floyd		
5. Resources Assigned this Period					
Strike Team / Task Force / Resource Designator	LWD	Leader	Number Persons	Drop Off PT./Time	Pick Up PT./Time
E-37 HETF	07/31	Mike Wirth	4	Showdown Spike/0600	Showdown Spike/2100
E-43 T4 ENG BOSKET'S EXCAVATING	07/30	Jason Bucholtz	3	Showdown Spike/0600	Showdown Spike/2100
E-13 T6 ENG PEANUT PIE	08/09	Dan Wanous	3	Showdown Spike/0600	Showdown Spike/2100
E-21 T6 ENG HIGH DESERT	08/09	Thomas Hanks	3	Showdown Spike/0600	Showdown Spike/2100
E-26 T4 ENG BROWN WILDLAND	08/13	Nick Brown	3	Showdown Spike/0600	Showdown Spike/2100
E-26 T6 ENG WHITE HORSE	08/10	Keir Murphy	3	Showdown Spike/0600	Showdown Spike/2100
E-109 T6 ENG GIST	08/10	Lew Wallace	3	Showdown Spike/0600	Showdown Spike/2100
E-71 T2 SKD BULL CREEK FORESTRY	08/02	Jay Nortome	1	Showdown Spike/0600	Showdown Spike/2100
E-22 T3 SKD AUSTIN LOGGING	07/30	James Austin	2	Showdown Spike/0600	Showdown Spike/2100
E-48 T1 FELB A & C CONSTRUCTION	08/04	John Andrews	1	Showdown Spike/0600	Showdown Spike/2100
E-50 T1 FELB 24/7	08/01	Tim Werk	2	Showdown Spike/0600	Showdown Spike/2100
E-59 T1 FELB A & C CONSTRUCTION	08/03	Shawn Marvin	1	Showdown Spike/0600	Showdown Spike/2100
E-57 T1 FELB J & E CONTRACTING	08/03	Ed Jungers	1	Showdown Spike/0600	Showdown Spike/2100
E-72 T2 EXCA WIRTH	08/02	Phil Wirth	1	Showdown Spike/0600	Showdown Spike/2100
E-83 T2 EXCA WIRTH	08/02	Wirth	1	Showdown Spike/0600	Showdown Spike/2100
E-88 T2 EXCA WIRTH	08/04	Cody Wirth	2	Showdown Spike/0600	Showdown Spike/2100
E-65 LOG C & G LOGGING	08/03	Colton Gondeiro	1	Showdown Spike/0600	Showdown Spike/2100
E-81 T1 DUMP TRK2	08/03	Matt Fuller	2	Showdown Spike/0600	Showdown Spike/2100
E-73 T1 DUMP TRK	08/03	Tanner Cloninger	1	Showdown Spike/0600	Showdown Spike/2100
E-55 AMBU ***ROVING	07/31	Kalilocay Willie	2	Showdown Spike/0600	Showdown Spike/2100
READ – LOCAL		Cory Cardipee	1	Showdown Spike/0600	Showdown Spike/2100
ARCH – LOCAL		Josh Uecker	1	Showdown Spike/0600	Showdown Spike/2100

SOF1		MIKE COOK	1	Showdown Spike/0600	Showdown Spike/2100
READ – LEAD FOR BRANCH III		JASON OLTROGGE	1	Showdown Spike/0600	Showdown Spike/2100

6. Control Operations/Work Assignments:

Task: Implement tactics to keep fire North of Divide Road.
Purpose: Ensure fire activity does not get established South of Divide Road to keep fire from progressing to the south towards Niehart..
End State: Fire activity will be kept North of Divide Road to keep fire from the 98 corridor.

7. Special Instructions:

Spike Camp is located at Showdown Ski Resort.
Minimize impact to the Belt Creek Rd.

Trigger points currently for EVACUATION – Tillinghast Creek, FR839, Goblin Gulch for communities to the North and East of the fire.

****IN THE EVENT OF AN IWI:
CONTACT DIVIDE COMMUNICATIONS ON COMMAND
IF UNREACHABLE, CONTACT BY PHONE AT 208-401-6806**

8. Division/Group Communication Summary

Function	Channel	RX Frequency N/W	RXTone/NAC	TX Frequency N/W	TX Tone/NAC	Mode
Command	6	173.8125	107.2	168.4750	107.2	A
Command	7	173.0375	107.2	167.3250	107.2	A
Command	8	169.8125	107.2	164.6750	107.2	A
Tactical	1	168.0500	107.2	168.0500	107.2	A
Command	9	171.5000		164.0000	156.7	A
Air to Ground	13	166.6125		166.6125		A

9. Prepared By (Resource Unit Leader) Jessica Valdez 	Approved By (Planning Section Chief) Jason Braunstein 	Date 7/31/2021	Time 1900
--	---	--------------------------	---------------------

Division/Group Assignment List (ICS 204 WF)

1. Incident Name:		3.			
DIVIDE COMPLEX-BALSINGER		Branch: III	Division/Group T		
2. Operational Period:					
Date/Time From: 08/01/2021 0600 SUN	Date/Time To: 08/02/2021 1000 MON				
4. Operations Personnel					
BRANCH DIRECTOR	Shane Sturgill (t)	FIELD OPERATIONS	Mike Davis		
DIVISION/GROUP SUPERVISOR	Steve Grader Matthew Klindt (t), Evan Heugen (t)	LEAD OPERATIONS PLANNING OPERATIONS	Pete Myers Troy Floyd		
5. Resources Assigned this Period					
Strike Team / Task Force / Resource Designator	LWD	Leader	Number Persons	Drop Off PT./Time	Pick Up PT./Time
O-150 TFLD	08/09	Ryan Hopkins	1	Showdown Spike/0600	Showdown Spike/2100
SOF1		MIKE COOK	1	Showdown Spike/0600	Showdown Spike/2100
SOF2		CHRIS FARINETTI	1	Showdown Spike/0600	Showdown Spike/2100
E-93 T3 ENG CASTLE MOUNTAIN	08/07	JOHN TILER	3	Showdown Spike/0600	Showdown Spike/2100
E-47 T4 ENG CASTLE MOUNTAIN	07/31	BLANE FIFIELD	3	Showdown Spike/0600	Showdown Spike/2100
E-10 T6 ENG BISHOP ENTERPRISES	08/06	RANDY HAWLEY	3	Showdown Spike/0600	Showdown Spike/2100
E-12 T6 ENG PEANUT PIE	08/09	SAM ELLEINS	3	Showdown Spike/0600	Showdown Spike/2100
E-116 T6 ENG CAHOON	08/11	OLIVIA PEREZ	3	Showdown Spike/0600	Showdown Spike/2100
E-52 T2 SKD GRIZZLY	08/01	BRAD SUTTON	2	Showdown Spike/0600	Showdown Spike/2100
E-51 T2 SKD GRIZZLY	08/01	JOSH BURDEN	2	Showdown Spike/0600	Showdown Spike/2100
E-49 T1 FELB SHERRILL	08/01	JESSE SHERRILL	2	Showdown Spike/0600	Showdown Spike/2100
E-76 T1 FELB JOHN STITT CONTRACTING	08/04	JOHN STITT	1	Showdown Spike/0600	Showdown Spike/2100
E-79 LOG DENBOER LOGGING	08/04	WILLIE DENBOER	2	Showdown Spike/0600	Showdown Spike/2100
E-1 T2 WAT LEVIATHAN, INC.	08/08	TRACY SCOTT	2	Showdown Spike/0600	Showdown Spike/2100
E-64 T2 WAT RMFS	08/01	RANDY WALKER	1	Showdown Spike/0600	Showdown Spike/2100
E-120 WAT2				Showdown Spike/0600	Showdown Spike/2100
E-122 WAT2				Showdown Spike/0600	Showdown Spike/2100
READ – LEAD FOR BRANCH III		JASON OLTROGGE	1	Showdown Spike/0600	Showdown Spike/2100
6. Control Operations/Work Assignments:					
Task: Monitor fire mop-up and improve line where necessary. Purpose: Ensure fire activity does not get established on Keegan Park and Ballpark Butte. End State: Keep fire from jumping Ballpark road and damaging private property.					

7. Special Instructions:

Spike Camp is located at Showdown Ski Resort.

Minimize impact to the Belt Creek Rd.

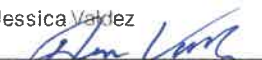

Trigger points currently for EVACUATION – Tillinghast Creek, FR839, Goblin Gulch for communities to the North and East of the fire.

****IN THE EVENT OF AN IWI:**



CONTACT DIVIDE COMMUNICATIONS ON COMMAND

IF UNREACHABLE, CONTACT BY PHONE AT 208-401-6806

8. Division/Group Communication Summary						
Function	Channel	RX Frequency N/W	RXTone/NAC	TX Frequency N/W	TX Tone/NAC	Mode
Command	6	173.8125	107.2	168.4750	107.2	A
Command	7	173.0375	107.2	167.3250	107.2	A
Command	8	169.8125	107.2	164.6750	107.2	A
Tactical	1	168.0500	107.2	168.0500	107.2	A
Command	9	171.5000		164.0000	156.7	A
Air to Ground	13	166.6125		166.6125		A

9. Prepared By (Resource Unit Leader)	Approved By (Planning Section Chief)	Date	Time
Jessica Valdez 	Jason Braunstein 	7/31/2021	1900

Division/Group Assignment List (ICS 204 WF)

1. Incident Name:			3.				
DIVIDE COMPLEX-BALSINGER			Branch:	Division/Group			
			III	U			
2. Operational Period:							
Date/Time From:		Date/Time To:					
08/01/2021 0600 SUN		08/02/2021 1000 MON					
4. Operations Personnel							
BRANCH DIRECTOR	Shane Sturgill (t)		FIELD OPERATIONS		Mike Davis		
DIVISION/GROUP SUPERVISOR	Wayne Rushing Gabriel Templeton (t)		LEAD OPERATIONS PLANNING OPERATIONS		Pete Myers Troy Floyd		
5. Resources Assigned this Period							
Strike Team / Task Force / Resource Designator	LWD	Leader	Number Persons	Drop Off PT./Time	Pick Up PT./Time		
O-90 HEQB	07/31	EVAN HARP	1	Showdown Spike/0600	Showdown Spike/2100		
HEQB		KING	1	Showdown Spike/0600	Showdown Spike/2100		
HEQB (T)		HIGHLAND	1	Showdown Spike/0600	Showdown Spike/2100		
BELK CREEK IA MODULE		BOB BUNDY		Showdown Spike/0600	Showdown Spike/2100		
E-112 T6 ENG CASTLE MOUNTAIN	08/11	LEVI GOOLSBY	3	Showdown Spike/0600	Showdown Spike/2100		
E-101 ENGINE				Showdown Spike/0600	Showdown Spike/2100		
E-115 ENG6 SOLOMON				Showdown Spike/0600	Showdown Spike/2100		
E-25 ENG HART				Showdown Spike/0600	Showdown Spike/2100		
E-24 ENG6 TORCHFIRE				Showdown Spike/0600	Showdown Spike/2100		
E-71 SKD				Showdown Spike/0600	Showdown Spike/2100		
E-49 FELB				Showdown Spike/0600	Showdown Spike/2100		
E-87 FELB				Showdown Spike/0600	Showdown Spike/2100		
ENG631 ROBERTHANSON				Showdown Spike/0600	Showdown Spike/2100		
T2 DOZ - LOCAL	07/31	CODY WIRTH	1	Showdown Spike/0600	Showdown Spike/2100		
SOF1		MIKE COOK	1	Showdown Spike/0600	Showdown Spike/2100		
E-55 AMBU ***ROVING	07/31	KALILOCAY WILLIE	2	Showdown Spike/0600	Showdown Spike/2100		
SOF2		CHRIS FARINETTI	1	Showdown Spike/0600	Showdown Spike/2100		
6. Control Operations/Work Assignments:							
Task: Scout and identify direct and indirect line construction opportunities to keep fire south of Trail 336/Management Action Point (MAP)#7.							
Purpose: Minimize fire impacts to private lands and spread north of Trail 336 (MAP #7).							
End State: Fire activity will be kept south of Trail 336 (MAP #7).							
7. Special Instructions:							
**IN THE EVENT OF AN IWI:							
CONTACT DIVIDE COMMUNICATIONS ON COMMAND							
IF UNREACHABLE, CONTACT BY PHONE AT 208-401-6806							
8. Division/Group Communication Summary							
Function	Channel	RX Frequency N/W	RXTone/NAC	TX Frequency N/W	TX Tone/NAC	Mode	
Command	7	173.0375	107.2	167.3250	107.2	A	
Command	8	169.8125	107.2	164.6750	107.2	A	
Tactical	5	166.7750	107.2	166.7750	107.2	A	
Command	6	173.8125	107.2	168.4750	107.2	A	
Command	9	171.5000		164.0000	156.7	A	
Air to Ground	13	166.6125		166.6125		A	
9. Prepared By (Resource Unit Leader)			Approved By (Planning Section Chief)			Date	Time
Jessica Valdez, RESL 			Jason Braunstein 			7/31/2021	1900

Division/Group Assignment List (ICS 204 WF)

1. Incident Name:			3.			
DIVIDE COMPLEX-BALSINGER			Branch:	Division/Group		
2. Operational Period:			III	STRUCTURE		
Date/Time From: 08/01/2021 0600 SUN	Date/Time To: 08/02/2021 1000 MON					
4. Operations Personnel						
BRANCH DIRECTOR	Shane Sturgill (t)		FIELD OPERATIONS	Mike Davis		
DIVISION/GROUP SUPERVISOR	Brad Harden (t)		LEAD OPERATIONS	Pete Myers		
			PLANNING OPERATIONS	Troy Floyd		
5. Resources Assigned this Period						
Strike Team / Task Force / Resource Designator	LWD	Leader	Number Persons	Drop Off PT./Time	Pick Up PT./Time	
O-140 STEN (t)	08/07	JUSTIN HOLSOMBACK	1	Showdown Spike/0600	Showdown Spike/2100	
SOF1		MIKE COOK	1	Showdown Spike/0600	Showdown Spike/2100	
0-55 SOF2	08/09	CHRIS FARINETTI	1	Showdown Spike/0600	Showdown Spike/2100	
E-55 AMBU ***ROVING	07/31	KALILOCAY WILLIE	2	Showdown Spike/0600	Showdown Spike/2100	
6. Control Operations/Work Assignments:						
<p>Task: Conduct point protection in the event fire moves toward structures.</p> <p>Purpose: Ensure any threat to structures are mitigated.</p> <p>End State: Threats to structures within Division I and Division T of the Balsinger fire will be mitigated. Protect the structures within DIV I and DIV T.</p>						
7. Special Instructions:						
<p>Trigger points currently for EVACUATION – Tillinghast Creek, FR839, Goblin Gulch for communities to the North and East of the fire.</p> <p>**IN THE EVENT OF AN IWI:</p> <p>CONTACT DIVIDE COMMUNICATIONS ON COMMAND</p> <p>IF UNREACHABLE, CONTACT BY PHONE AT 208-401-6806</p>						
8. Division/Group Communication Summary						
Function	Channel	RX Frequency N/W	RXTone/NAC	TX Frequency N/W	TX Tone/NAC	Mode
Command	6	173.8125	107.2	168.4750	107.2	A
Command	7	173.0375	107.2	167.3250	107.2	A
Command	8	169.8125	107.2	164.6750	107.2	A
Tactical	4	166.7250	107.2	166.7250	107.2	A
Command	9	171.5000		164.0000	156.7	A
Air to Ground	13	166.6125		166.6125		A
9. Prepared By (Resource Unit Leader)			Approved By (Planning Section Chief)		Date	Time
Jessica Valdez			Jason Braunstein		7/31/2021	1900



Division/Group Assignment List (ICS 204 WF)

1. Incident Name:			3.			
DIVIDE COMPLEX-BALSINGER			Branch:		Division/Group	
2. Operational Period:			III		IA	
Date/Time From:	Date/Time To:					
08/01/2021 0600 SUN	08/02/2021 1000 MON					
4. Operations Personnel						
BRANCH DIRECTOR		Shane Sturgill (t)		FIELD OPERATIONS		
DIVISION/GROUP SUPERVISOR				Mike Davis		
				LEAD OPERATIONS		
				PLANNING OPERATIONS		
				Pete Myers		
				Troy Floyd		
5. Resources Assigned this Period						
Strike Team / Task Force / Resource Designator	LWD	Leader	Number Persons	Drop Off PT./Time	Pick Up PT./Time	
O-80 TFLD	08/07	MIKE WILLARDSON	1	Showdown Spike/0600	Showdown Spike/2100	
T2 HC MODULE BELT CREEK - LOCAL		BOB BUNDY	12	Showdown Spike/0600	Showdown Spike/2100	
E-75 T3 ENG CASTLE MOUNTAIN	08/03	SCOTT MCHENRY	3	Showdown Spike/0600	Showdown Spike/2100	
E-99 T3 ENG3 ALPINE FD	08/10	CHRIS CORKER	4	Showdown Spike/0600	Showdown Spike/2100	
E-100 T4 ENG AZ-IMR	08/11	CHAYNE BEST	4	Showdown Spike/0600	Showdown Spike/2100	
E-39 T6 ENG DESERT HILLS FD	08/02	JASON SAYRE	3	Showdown Spike/0600	Showdown Spike/2100	
E-74 T6 ENG DS FIRE	08/09	BILLIE SMOCK	3	Showdown Spike/0600	Showdown Spike/2100	
E-110 T6 ENG MARTIN	08/09	CASEY EHLERS	3	Showdown Spike/0600	Showdown Spike/2100	
T6 ENGINE 631 - LOCAL		JOE HANSON	3	Showdown Spike/0600	Showdown Spike/2100	
E-50 EMTF (NON TRANSPORT)	08/11	ANDIE LIVINGSTON	2	Showdown Spike/0600	Showdown Spike/2100	
SOF1		MIKE COOK	1	Showdown Spike/0600	Showdown Spike/2100	
6. Control Operations/Work Assignments:						
Task: Serve as primary responding suppression resources to any initial attack within the Temporary Flight Restrictions (TFR) as identified in the delegation of authority.						
Purpose: Keep fire activity within the parameters of initial attack fires.						
End State: Fire is at least 90% contained and has not grown in size for one operational period.						
7. Special Instructions:						
Stage at Showdown Ski Resort.						
E-4 WAT Sterling will stage at Helibase.						
**IN THE EVENT OF AN IMI:						
CONTACT DIVIDE COMMUNICATIONS ON COMMAND						
IF UNREACHABLE, CONTACT BY PHONE AT 208-401-6806						
8. Division/Group Communication Summary						
Function	Channel	RX Frequency N/W	RXTone/NAC	TX Frequency N/W	TX Tone/NAC	Mode
Command	6	173.8125	107.2	168.4750	107.2	A
Command	7	173.0375	107.2	167.3250	107.2	A
Command	8	169.8125	107.2	164.6750	107.2	A
Tactical	2	168.2000	107.2	168.2000	107.2	A
Command	9	171.5000		164.0000	156.7	A
Air to Ground	13	166.6125		166.6125		A
9. Prepared By (Resource Unit Leader)		Approved By (Planning Section Chief)			Date	Time
Jessica Valdez		Jason Braunstein			7/31/2021	1900



Division/Group Assignment List (ICS 204 WF)

1. Incident Name:			3.			
DIVIDE COMPLEX-BALSINGER			Branch:	Division/Group		
2. Operational Period:			III NIGHT			
Date/Time From: 08/01/2021 0600 SUN	Date/Time To: 08/02/2021 1000 MON					
4. Operations Personnel						
BRANCH DIRECTOR	Shane Sturgill (t)		FIELD OPERATIONS	Mike Davis		
DIVISION/GROUP SUPERVISOR			LEAD OPERATIONS	Pete Myers		
			PLANNING OPERATIONS	Troy Floyd		
5. Resources Assigned this Period						
Strike Team / Task Force / Resource Designator	LWD	Leader	Number Persons	Drop Off PT./Time	Pick Up PT./Time	
O-151 TFLD	08/09	DARIN GROFF	1	SHOWDOWN SPIKE/1800	SHOWDOWN SPIKE/1000	
E-40 T6 ENG GREEN VALLEY FD	08/03	MIKE CARRAFA	3	SHOWDOWN SPIKE/1800	SHOWDOWN SPIKE/1000	
E-41 T6 ENG FLAME CHASERS	08/01	EDWIN HILL	3	SHOWDOWN SPIKE/1800	SHOWDOWN SPIKE/1000	
6. Control Operations/Work Assignments:						
<p>Task: Monitor and implement tactics to hold containment lines during nighttime hours.</p> <p>Purpose: Ensure daytime tactics implemented continue to mitigate any threats.</p> <p>End State: Fire will be kept within containment lines.</p>						
7. Special Instructions:						
<p>**IN THE EVENT OF AN IWI:</p> <p>CONTACT DIVIDE COMMUNICATIONS ON COMMAND</p> <p>IF UNREACHABLE, CONTACT BY PHONE AT 208-401-6806</p>						
8. Division/Group Communication Summary						
Function	Channel	RX Frequency N/W	RXTone/NAC	TX Frequency N/W	TX Tone/NAC	Mode
Command	6	173.8125	107.2	168.4750	107.2	A
Command	7	173.0375	107.2	167.3250	107.2	A
Command	8	169.8125	107.2	164.6750	107.2	A
Tactical	3	168.6000	107.2	168.6000	107.2	A
Command	9	171.5000		164.0000	156.7	A
Air to Ground	13	166.6125		166.6125		A
9. Prepared By (Resource Unit Leader)		Approved By (Planning Section Chief)			Date	Time
Jessica Valdez		Jason Braunstein			7/31/2021	1900

Division/Group Assignment List (ICS 204 WF)

1. Incident Name:		3.				
Woods Creek		Branch: IV	Division/Group AA/MM			
2. Operational Period:						
Date/Time From: 08/01/2021 0600 SAT	Date/Time To: 08/02/2021 1000 SUN					
4. 1 Operations Personnel						
OPERATIONS CHIEF	PETE MYERS	BRANCH DIRECTOR	BRYAN BROWNING (t)			
DIVISION/GROUP SUPERVISOR	CHAD STOVER	FIELD OPERATIONS	DAVE WALKER			
5. Resources Assigned this Period						
Strike Team/Task Force / Resource Designator	LWD	Leader	Number Persons	Drop Off PT./Time	Pick Up PT./Time	
E-57 FELLER BUNCHER T1 – CALDBECK LOGGING INC	08/11	CHRIS CALDBECK	2			
E-45 ENG4 – GOODING – E91826 – K94464 - GOODING RURAL	08/11	BRANDON COVEY	3			
E-32 ENG6 WINDSWEPT WILDFIRE, LLC – 1GCJK33U04F192	08/10	CHRIS SCHIEFELBEIN	3			
HEQB(T)	08/09	MATT WILL	1			
O-213 ZACH KEMPHART			1			
O-1.22 EMPF TRENTO HARPER			1			
O-17 EMPF ASHLEY SHORT			1			
E-49 ENG3 ZX-ORC						
SOF1		LARRY CONNELL	1			
6. Control Operations/Work Assignments:						
<p>Task: Construct line and hold where possible. Continue protecting Thompson Guard Station and continue structure protection activities around Big Birch Community.</p> <p>Purpose: To keep fire from damaging federal and private property.</p> <p>End State: Keep fire from moving off of federal land onto private property.</p>						
7. Special Instructions:						
Maintain situational awareness while driving on public and forest roads.						
**IN THE EVENT OF AN IWI:						
CONTACT DIVIDE COMMUNICATIONS ON COMMAND						
IF UNREACHABLE, CONTACT BY PHONE AT 208-401-6806						
8. Division/Group Communication Summary						
Function	Channel	RX Frequency N/W	RXTone/NAC	TX Frequency N/W	TX Tone/NAC	Mode
COMMAND	5	172.6500	107.2	166.3125	107.2	
TACTICAL	8	168.0500	107.2	168.0500	107.2	
AIR TO GROUND	13	169.2875		169.2875		
9. Prepared By (Resource Unit Leader)		Approved By (Planning Section Chief)			Time	
JESSICA VALDEZ 		JASON BRAUNSTEIN 			07/31/2021 1900	

Division/Group Assignment List (ICS 204 WF)

1. Incident Name:		Woods Creek		3.	
		Branch: IV	Division/Group NIGHT		
2. Operational Period:					
Date/Time From: 08/01/2021 0600 SAT		Date/Time To: 08/02/2021 1000 SUN			
4. Operations Personnel					
OPERATIONS CHIEF	PETE MYERS	BRANCH DIRECTOR	BRIAN BROWNING		
DIVISION/GROUP SUPERVISOR	ANTHONY MARTINEZ	FIELD OPERATIONS	DAVE WALKER		
5. Resources Assigned this Period					
Strike Team/ Task Force / Resource Designator	LWD	Leader	Number Persons	Drop Off PT./Time	Pick Up PT./Time
O-6 TFLD JOHN R ASHCRAFT	08/10	TBD	1		
E-38 ENG6 OUTBACK FIREFIGHTING INC	08/10	TBD	3		
E-42 ENG6 PEANUT PIE ENTERPRISES, LLC	08/11	WAYDE VISSER	3		
E-T9 MONTANA DNRC ENGINE	08/11	TBD	3		
E-90 ENG6 AZ-CRO		TBD	3		
TFLD		JOHN CARY			
E-29 DNRC					
6. Control Operations/Work Assignments:					
Task: Provide protection of structures and coordinate with local Fire Departments.					
Purpose: To provide residents and local Fire Departments coverage during overnight hours.					
End State: Threat to life and property removed.					
7. Special Instructions:					
Maintain situational awareness while driving on public and forest roads.					
**IN THE EVENT OF AN IWI:					
CONTACT DIVIDE COMMUNICATIONS ON COMMAND					
IF UNREACHABLE, CONTACT BY PHONE AT 208-401-6806					
8. Division/Group Communication Summary					
Function	Channel	RX Frequency N/W	RXTone/NAC	TX Frequency N/W	TX Tone/NAC Mode
COMMAND	5	172.6500	107.2	166.3125	107.2
TACTICAL	8	168.0500	107.2	168.0500	107.2
9. Prepared By (Resource Unit Leader)		Approved by (Planning Section Chief)			Time
JESSICA VALDEZ 		JASON BRAUNSTEIN 			07/31/2021 1900

Division/Group Assignment List (ICS 204 WF)

1. Incident Name:		Woods Creek		3.		
		IV	SS/WW			
2. Operational Period:						
Date/Time From: 08/01/2021 0600 SAT		Date/Time To: 08/02/2021 1000 SUN				
4. Operations Personnel						
BRANCH DIRECTOR	BRIAN BROWNING (T)		FIELD OPERATIONS	DAVE WALKER		
DIVISION/GROUP SUPERVISOR	CRAIG ROBERTSON CRAIG KOSTRCZEWSKI (T) TK KENNEDY (T)		OPERATIONS CHIEF	PETE MYERS		
5. Resources Assigned this Period						
Strike Team/ Task Force/ Resource Designator	LWD	Leader	Number Persons	Drop Off PT./Time	Pick Up PT./Time	
HEQB NICK BOUCHER		NICKBOUCHER	1			
TFLD GABE MENDINA		TBD	1			
TFLD BRAD HARDEN						
E-46 ENG3 AZ-PRI						
E-47 ENG6 AZ-EFR	08/11	STEVE REYES	3			
E-43 ENG6 GRIZZLY MOUNTAIN	08/10	BRENDAN COOK	3			
E-117 ENG6 BASKIN WILDFIRE		TBD	3			
E-45 ENG3 RMFS	08/08	GLENN NUTT	4			
E-98 ENG3 23	08/10	ERNESTO RENTERIA	4			
E-42 ENG4 CASTLE MOUNTAINMT		RHODINA TSOSIE	3			
E-15 ENG6 NORTHERN UTAH FIRE	08/07	COREY STONE	3			
E-17 ENG6 UTAH FIRE COMPANY	08/07	JOHN BEAL	2			
E-16 ENG6 EAGLE 6	08/07	DENNIS BARCUS	3			
E-18 ENG6	08/07	COLE STANFORD	3			
E-106 T1 WAT	08/09	MITCH HAMEL	2			
E-1 DOZ3 GROUNDHOG	08/10	TBD	1			
E-64 SKIDGINE, T3 – BODLE, AL	08/10	AL BODLE	1			
E-65 SKIDGINE, T2 – BODLE, AL	08/10	BRAD BODLE	1			
O-1.22 EMPF LINE MEDIC		TRENT HARPER	1			
E-103 T2 WAT CASTLE MOUNTAIN	08/09	ZACH MANNON	1			
E-105 T2 WAT CASTLE MOUNTAIN	08/09	TIM MCGUIRE	1			
E-102 T2 WAT ANDERSON	08/09	JASON HEITZ	1			
E-118 ENG6		TBD	3			
O-31 FALM						
SOF1		LARRY CONNELL				
6. Control Operations/Work Assignments:						
Recon and support private landowners with dozer line construction south to Ray Creek.						
Purpose: Establish point protection and direct line for burnout operations.						
End State: Control fire resulting in minimal loss of critical rangeland and secure high value resources for homes and the ranching community.						
7. Special Instructions:						
Maintain situational awareness while driving on public and forest roads.						
Wilderness Medics Ambulance, Mark Bessy 623-866-3490						
***IN THE EVENT OF AN IWI:						
CONTACT DIVIDE COMMUNICATIONS ON COMMAND						
IF UNREACHABLE, CONTACT BY PHONE AT 208-401-6806						
8. Division/Group Communication Summary						
Function	Channel	RX Frequency N/W	RX Tone/NAC	TX Frequency N/W	TX Tone/NAC	Mode
COMMAND	5	172.6500	107.2	166.3125	107.2	
TACTICAL	12	166.7750	107.2	166.7750	107.2	
AIR TO GROUND	13	169.2875		169.2875		
9. Prepared By (Resource Unit Leader)		Approved By		Time		
JESSICA VALDEZ		JASON BRAUNSTEIN		07/31/2021		

ICS 205 (New)

INCIDENT RADIO COMMUNICATIONS PLAN		Incident Name American Fork			Date/Time From 8/1/2021 0600	Date/Time To 8/2/2021 0600				
Group #	CH #	Function	Channel Name/Trunked Radio System Talkgroup	Assignment	RX Freq N or W	RX Tone/NAC	TX Freq N or W	Tx Tone/NAC	Mode	Remarks
2	1	Command	CMD 4		169.7500 N	107.2	167.1000 N	107.2	A	
2	2	Command	SUNLIGHT		171.5000 N		164.0000 N	107.2	A	
2	3	Tactical	RED		154.0700 N		154.0700 N	131.8	A	
2	4	Tactical	COMMON USE	DIV M	168.6125 N		168.6125 N	156.7	A	
2	5	Tactical	COMMON USE	DIV P	163.7125 N		163.7125 N	146.2	A	
2	6	Tactical	LCNF TAC	DIV A	166.9875 N		166.9875 N	114.8	A	
2	7	Tactical	YELLOW		151.2200 N		151.2200 N	110.9	A	
2	8	Tactical	HFDIR		171.1375 N		171.1375 N	107.2	A	
2	9	Tactical	MGHR FIRE 1		154.4000 N		154.4000 N	100.0	A	
2	10	RPT	CASCADE LAW		154.7700 N		155.5800 N	151.4	A	
2	11	Tactical	MEAGHER DES S		155.0250 N		155.0250 N	107.2	A	
2	12	Tactical	MGHR DES RPTR		155.0250 N		158.7750 N	107.2	A	
2	13	Air Ground	A/G PRI		169.1500 N		169.1500 N		A	Primary Air to Ground
2	14	Air Ground	A/G SEC		172.7500 N		172.7500 N		A	Secondary Air to Ground
2	15	Medivac	TAN		155.3400 N		155.3400 N	156.7	A	Air Ambulance
2	16	Air Guard	AIRGUARD		168.6250 N		168.6250 N	110.9	A	
5. Prepared by (Communications Unit) David Radzwill COML(t)				Date / Time Prepared 7/31/21 - 1800						

The convention calls for frequency lists to show four digits after the decimal place, followed by either an "N" or a "W", depending on whether the frequency is narrow or wide band. Mode refers to either "A" or "D" indicating analog or digital (Project 25)

***** Special Instructions: Use Human Repeater When Necessary. All Medical calls use Command 4/Channel 1 to Divide Communications to initiate IWI. Divide Communications Cell - (406) 438-1685**

ICS 205 (New)

		INCIDENT RADIO COMMUNICATIONS PLAN		Incident Name Divide Complex		Date/Time From 8/1/2021 0600		Date/Time To 8/2/2021 0600		
Group #	Ch #	Function	Channel Name/Trunked Radio System Talkgroup	Assignment	RX Freq N or W	RX Tone/NAC	TX Freq N or W	TX Tone/NAC	Mode	Remarks
1	1	Tactical	TAC 1	Div. I	168.0500 N	107.2	168.0500 N	107.2	A	Division India
1	2	Tactical	TAC 2	IA	168.2000 N	107.2	168.2000 N	107.2	A	Initial Attack
1	3	Tactical	TAC 3	Div. T	168.6000 N	107.2	168.6000 N	107.2	A	Division Tango
1	4	Tactical	TAC 4	Structure	166.7250 N	107.2	166.7250 N	107.2	A	Structure Group
1	5	Tactical	TAC 5	Div. E/Q, U	166.7750 N	107.2	166.7750 N	107.2	A	Division Echo/Quebec, Uniform
1	6	Command	CMD 1	All Divisions	173.8125 N	107.2	168.4750 N	107.2	A	Prophyry L.O. Showdown
1	7	Command	CMD 2	All Divisions	173.0375 N	107.2	167.3250 N	107.2	A	Big Baldy Mountain
1	8	Command	CMD 3	All Divisions	169.8125 N	107.2	164.6750 N	107.2	A	Monument Mountain
1	9	Command	BIG BALD	All Divisions	171.5000 N	107.2	164.0000 N	156.7	A	USFS Dispatch Big Baldy "Balsinger"
1	10	Command	MONUMENT	All Divisions	171.5000 N	107.2	164.0000 N	103.5	A	USFS Dispatch Monument
1	11	Tactical	YELLOW		151.2200 N		151.2200 N		A	
1	12	Tactical	RED		154.0700 N		154.0700 N		A	
1	13	Air Ground	A/G PRI		166.6125 N		166.6125 N		A	Balsinger A/G
1	14	Air Ground	A/G SEC		168.7375 N		168.7375 N		A	Ellis A/G
1	15	Medivac	TAN		155.3400 N		155.3400 N	156.7	A	Air Ambulance
1	16	Air Guard	AIRGUARD		168.6250 N		168.6250 N	110.9	A	AIRGUARD
5. Prepared by (Communications Unit) David Radzivil COML (t)						Date / Time Prepared 7/31/21 - 1800		Lat/Long		




The convention calls for frequency lists to show four digits after the decimal place, followed by either an "N" or a "W", depending on whether the frequency is narrow or wide band. Mode refers to either "A" or "D" indicating analog or digital (Project 25)

***** Special Instructions: Use Human Repeater When Necessary. All Medical calls use Command 4/Channel 1 to Divide Communications to initiate IWI. Divide Communications Cell - (406) 438-1685**

Controlled Unclassified Information/Basic

ICS 205

INCIDENT RADIO COMMUNICATIONS PLAN		Incident Name Woods Creek		Date/Time Prepared: 07/31/21 1100		Operational Period Date/Time From: 8/1/21 0600 To: 8/2/21 0600					
Ch #	Function	Channel Name/Trunked Radio System/Talkgroup	Assignment	RX Freq	N or W	RX Tone/NAC	TX Freq	N or W	Tx Tone/NAC	Mode	Remarks
1	COMMAND	CMD 1		173.8125 N		107.2	168.4750 N		107.2	A	Divide Complex
2	COMMAND	CMD 2		173.0375 N		107.2	167.3250 N		107.2	A	Divide Complex
3	COMMAND	CMD 3		169.8125 N		107.2	164.6750 N		107.2	A	Divide Complex
4	COMMAND	CMD 4		169.7500 N		107.2	167.1000 N		107.2	A	American Fork
5	NOT PROG	NOT PROG		172.6500 N		107.2	166.3125 N		107.2	A	
6	COMMAND	DUCK		171.1375 N			164.1500 N		131.8	A	Duck Creek
7	TACTICAL	CREW ONE		168.7250 N			168.7250 N			A	
8	TACTICAL	TAC 1	Div. AA/ MM	168.0500 N		107.2	168.0500 N		107.2	A	Div. AA/ MM
9	TACTICAL	TAC 2		168.2000 N		107.2	168.2000 N		107.2	A	
10	TACTICAL	TAC 3	Div. QQ	168.6000 N		107.2	168.6000 N		107.2	A	Div. QQ
11	TACTICAL	TAC 4	Div. SSWW	166.7250 N		107.2	166.7250 N		107.2	A	Div. SSWW
12	TACTICAL	TAC 5		166.7750 N		107.2	166.7750 N		107.2	A	
13	Air to Ground	A/G PRI	ALL	169.2875 N			169.2875 N			A	Air to Ground Primary
14	Air to Ground	A/G SEC	ALL	166.3375 N			166.3375 N			A	Air to Ground Secondary
15	MEDIVAC	VMED	ALL	155.3400 N			155.3400 N		156.7	A	Air Ambulance
16	AIR GUARD	AIRGUARD	ALL	168.6250 N			168.6250 N		110.9	A	Air Guard
5. Prepared by (Communications Unit): Dave Radzivil, COM1 (t)				Incident Location: White Sulphur Springs County/State Meagher County, Montana		Lat/Long					

*The convention calls for frequency lists to show four digits after the decimal place, followed by either an "N" or a "W", depending on whether the frequency is narrow or wide band. Mode refers to either "A" or "D" indicating analog or digital (Project 25)
Use Human Repeater When Necessary.*

All Medical calls through Command Repeaters to Divide Communication to initial an IW1. Divide Communications Cell - (406) 438-1685

MEDICAL PLAN (ICS 206 WF)

Incident/Project Name		1. Operational Period						
Divide Complex/American Fork		Day Shift / Night Shift August 01 2021 0600 – August 02,2021 1000						
2. Ambulance Services								
Name	Complete Address	Phone & EMS Frequency		Advanced Life Support (ALS)				
				Yes	No			
Meagher County Volunteer Ambulance	White Sulphur Springs, MT	406-547-3397 or 911		No				
Belt Ambulance (Balsinger Fire Response Area)	Belt, MT	911		No				
Townsend Ambulance	Townsend, MT	406-266-3441		No				
St. Peters EMS	Helena, MT	406-447-8293		Yes				
3. Air Ambulance Services								
Name	Phone	Type of Aircraft & Capability						
Mercy Flight (Rotor & Fixed Wing)	800-972-4000	Air Ambulance, NVG Capable. (Use TAN Channel 15 155.3400 for contact with helicopter) For Fixed Wing Transports -Ambo will transport to White Sulphur Springs Airport						
Life Flight Network	800-232-0911	Air Ambulance, NVG Capable. (Use TAN Channel 15 155.3400 for contact with helicopter)						
Two Bear Rotor	406-758-5610	Rotor- Bell 429 Hoist Capable- NVG Capable. Must be ordered as Medical Transport						
4. Hospitals								
Name Complete Address	GPS Datum – WGS 84 Coordinate Standard Degrees Decimal Minutes DD° MM.MMM' N - Lat DD° MM.MMM' W - Long		Travel Time		Phone	Helipad		Level of Care Facility
	Air	Gnd	Yes	No				
Mtn View Medical Center 16 West Main White Sulphur Springs, MT	Lat: N 46° 32.870 Long: W 110° 54.396	10 Min	40 Min	406-547-3321	X		Stabilize & Transfer	
St Peters Health 2475 E Broadway St Helena, MT	Lat: N 46° 34.939 Long: W 111° 59.764	20 Min	140 Min	406-442-2480	X		Area Trauma Center	
Benefis Health System 1101 26 th St S Great Falls, MT	Lat: N 47° 29.510 Long: W 111° 15.588	30 Min	60 Min	406-543-7271	X		Level 2 Trauma Center	
Townsend Hospital 110 N. Oak Street Townsend, MT	Lat: N 46° 18.562 Long: W 111° 58.820	X	15 Min	406-266-3186		X	Stabilize	
Univ. Of Utah Health 50 N Medical Dr. Salt Lake City, UT	Lat: N 40° 46.361 Long: W 111° 50.240	90+ Min	NA	801-581-2700	X		Designated Burn Center	
5. Division Branch Group	Area Location Capability							
DIVISION I Balsinger	EMS Responders & Capability:							
	Equipment Available on Scene:							
	Medical Emergency Channel:		Contact Divide Communications on Command or by phone 406-438-1685					
	ETA for Ambulance to Scene:							
	Air:		25-60 Minutes Including Spin Up Time					
	Ground:		30 Minutes to Spike 80 Minutes to Fire					
	Approved Helispot:		H1					
	Lat:		46.51.497					
Long:		110.40.703						

MEDICAL PLAN (ICS 206 WF)

DIVISION T Balsinger	EMS Responders & Capability	
	Equipment Available on Scene:	
	Medical Emergency Channel:	Contact Divide Communications on Command or by phone 406-438-1685
	ETA for Ambulance to Scene:	
	Air:	25-60 Minutes Including Spin Up Time
	Ground:	30 Minutes to Spike 80 Minutes to Fire
	Approved Helispot:	
	Lat:	
	Long:	

DIVISION U Balsinger	EMS Responders & Capability	EMPF K Willie & EMTF A MacArthur AMBO 1
	Equipment Available on Scene:	4x4 ALS Ambulance – roving to DIV I
	Medical Emergency Channel:	Contact Divide Communications on Command or by phone 406-438-1685
	ETA for Ambulance to Scene:	
	Air:	25-60 Minutes Including Spin Up Time
	Ground:	30 Minutes to Spike 80 Minutes to Fire
	Approved Helispot:	
	Lat:	
	Long:	

DIVISION Structure Balsinger	EMS Responders & Capability	O-213 EMTF Zach Kephart
	Equipment Available on Scene:	4x4 ALS Ambulance – roving to DIV I
	Medical Emergency Channel:	Contact Divide Communications on Command or by phone 406-438-1685
	ETA for Ambulance to Scene:	
	Air:	25-60 Minutes Including Spin Up Time
	Ground:	30 Minutes to Spike 80 Minutes to Fire
	Approved Helispot:	
	Lat:	
	Long:	

DIVISION IA Balsinger	EMS Responders & Capability	E-50 EMTF A. Livingston, EMTF G. Ticknor
	Equipment Available on Scene:	4x4 Vehicle, BLS Kit
	Medical Emergency Channel:	Contact Divide Communications on Command or by phone 406-438-1685
	ETA for Ambulance to Scene:	
	Air:	25-60 Minutes Including Spin Up Time
	Ground:	Depends on location
	Approved Helispot:	
	Lat:	
	Long:	

Show Down Ski Patrol Room	EMS Responders & Capability	O-78 EMTF Tom Christian 727-389-2481
	Equipment Available on Scene:	4x4 Vehicle, 100 Man Kit
	Medical Emergency Channel:	Contact Divide Communications on Command or by phone 406-438-1685
	ETA for Ambulance to Scene:	
	Air:	25-60 Minutes Including Spin Up Time
	Ground:	30 Minutes to Spike 80 Minutes to Fire
	Approved Helispot:	
	Lat:	
	Long:	

DIVISION E/Q Ellis	EMS Responders & Capability	E-34 EMTF Corbin, EMTF Fallis
	Equipment Available on Scene:	4x4 vehicle, BLS Kit
	Medical Emergency Channel:	Contact Divide Communications on Command or by phone 406-438-1685
	ETA for Ambulance to Scene:	
	Air:	25-60 Minutes Including Spin Up Time
	Ground:	30 Minutes to 60 minutes depending on location
	Approved Helispot:	
	Lat:	
	Long:	

MEDICAL PLAN (ICS 206 WF)

DIVISION A American Fork	EMS Responders & Capability	E-60 EMTF G.Mizrahi, EMTF W.Conway
	Equipment Available on Scene:	4x4 SUV
	Medical Emergency Channel:	Contact Divide Communications on Command or by phone 406-438-1685
	ETA for Ambulance to Scene:	
	Air:	25-60 Minutes Including Spin Up Time
	Ground:	30 Minutes to 60 minutes depending on location
	Approved Helispot:	
	Lat: Long:	
DIVISION M American Fork	EMS Responders & Capability	
	Equipment Available on Scene:	
	Medical Emergency Channel:	Contact Divide Communications on Command or by phone 406-438-1685
	ETA for Ambulance to Scene:	
	Air:	25-60 Minutes Including Spin Up Time
	Ground:	30 – 60 Minutes depending on location
	Approved Helispot:	
	Lat: Long:	
DIVISION P American Fork	EMS Responders & Capability	E-33 EMTF L. Rosenberg, EMTF D. Dorrance
	Equipment Available on Scene:	BLS 4x4 Ambulance
	Medical Emergency Channel:	Contact Divide Communications on Command or by phone 406-438-1685
	ETA for Ambulance to Scene:	
	Air:	25-60 Minutes Including Spin Up Time
	Ground:	30 - 60 Minutes depending on location
	Approved Helispot:	
	Lat: Long:	
Woods Creek	EMS Responders & Capability	EMPF Trent Harper EMPF AshleyShort EMPF Zach Kephart Sherri McDougal MEDL(t)-JCP E-82 ALS Ambo
	Equipment Available on Scene:	ALS Kit and ALS AMBO
	Medical Emergency Channel:	Contact Divide Communications on Command or by phone 208-401-6806
	ETA for Ambulance to Scene:	
	Air:	25-60 Minutes Including Spin Up Time
	Ground:	5-25 minutes depending on volunteer staffing
	Approved Helispot:	
	Lat: Long:	
6. Prepared by Rich DOrazio MEDL	7. Date/Time 07/31/21 1600	8. Reviewed by Safety Officer Jose Castro electronic signature

American Fork AND Divide Complex Overnight Medical Incidents – contact DIVIDE COMMUNICATIONS on COMMAND, or if unreachable, contact by phone 208-401-6806.

Balsinger will be using Belt Ambulance as fire is in Cascade County. Complete Medical Incident Report (8 line) per process with responding dispatch center.



HEALTH AND SAFETY MESSAGE

“We don’t plan on luck to be safe, we plan on sound risk management and good decisions.” ~ The Red Team

INCIDENT: Divide Complex Wildfire

DATE: Sunday August 1, 2021

Major Hazards & Risks: **COMPLACENCY**

We have heard it our whole fire career, “**Don’t get complacent.**” That term gets thrown around so much that it gets dismissed. Is that complacency itself? It reminds me of when the Safety Officer at morning briefings states “Be safe out there.” We have all heard it and rolled our eyes or had other thoughts on our mind rather than really thinking about it. This is not a job at safety officers, they have a constant struggle to keep people engaged with the common priority of firefighter and public safety. It’s a hard job, and obviously no one wakes up and tries to put themselves in harm’s way. So after some thought we decided to look at how complacency is defined and what it should mean to us in the fire environment.

Merriam Webster: self-satisfaction especially when accompanied by unawareness of actual dangers or deficiencies.

Dictionary.com: a feeling of quiet pleasure or security, often while unaware of some potential danger, defect, or the like; self-satisfaction or smug satisfaction with an existing situation, condition, etc.

Cambridge Dictionary: a feeling of calm satisfaction with your own abilities or situation that prevents you from trying harder.

Freedictionary.com: A feeling of contentment or self-satisfaction, especially when coupled with an unawareness of danger, trouble, or controversy.

All of these have a common theme. A general feeling that things are ok and you are comfortable. In other words things are routine, ops normal, ops redundant. So let ask ourselves a few questions to gauge where we are at currently.

Are we in a routine situation? Are we fatigued to the point where we think everything is routine? Are we dismissive to a hazard, later in the season, that would have drawn more attention to earlier in fire season? What can we control currently?

We have no silver bullet to stop complacency. Recognition of our surroundings may be the first step. *Currently we have little fire to fight and are in the suppression repair business which is repetitive and tedious.* It has been a long fire season already, and maybe we’re short on rest and fatigued. There may be external factors that distract us from the task at hand. This is a classic recipe for complacency and a potential accident, injury, or worse.

IDEAS! Communicate with each other to ensure it’s a priority to stay engaged on risk vs. benefit. Being vigilant in your attention to task and your surroundings is one thing we can control and keep in mind nothing is routine, ever.

“Look up, look down, and look around. Stop, think, before you act. If you see something, say something.”

As you drive back to fire camp tonight, think back to three shifts ago. Do you remember any details from that drive? If not maybe complacency is setting in.

Thank you for your time and consideration

Red Team Safety Officers: José Castro, Brad Lidell, Mike Cook, Larry Connell, John Fugitt, and Chris Farinetti

LIAISON INFORMATION

Liaison Officer Contacts

Divide Complex	David Parker - LOFR	910-546-6202	david_parker@nps.gov
American Fork	Jim Cooper - LOFR	346-213-3849	jcooper@tfs.tamu.edu
Woods Creek	Ed Christopher – LOFR(t)	208-859-8525	edwin_christopher@fws.gov

Additional Liaison Officer Contacts

Paul Stevens - LOFR	252-216-6316	npsobxranger@yahoo.com
Stephanie Allison – LOFR(t)	662-763-8374	stephanie.allison@usda.gov

COVID Coordinator

Birk Roseman – LOFR(t)	850-363-7214	birk.roseman@usda.gov
------------------------	--------------	--

AIR OPERATIONS SUMMARY

Prepared By: John Fish

Prepared Date: 7.31.21

Prepared Time: 1800

INCIDENT NAME: Divide Complex/American Fork/Woods Creek	OPS PERIOD DATE: August 1, 2021	START TIME: 0800	END TIME: 2000	Sunrise: 0603	Sunset: 2056
3. REMARKS (Safety Notes, Hazards, and Air Operations Special Equipment, etc.): Hazards – Poor Visibility due to smoke, anticipate general and fire aviation traffic. Use caution when utilizing non-towered airports. See and Avoid.					
Helicopter requests can be made by DIVS/Branch/OPS directly to the Helibase via Command.					
MEDEVAC: Short Haul – N401HQ - Contact Dispatch Air Ambulance Frequency - "Tan" 155.3400 TX tone 156.7		TFR #: American Fork 1/7632 Polygon 12,500 msl Balsinger 1/6366 7nm 11,000 msl Woods Creek 1/7645 Polygon 12,500 msl			

PERSONNEL	NAME	PHONE #	FREQUENCIES	AM	FM	FIXED-WING- Type/ Make-Model/ N#/ Base
AOBD	John Fish	850-843-0977 850-509-0598	A/G Ellis		168.7375	AIRTANKERS – Order through Air Attack if on scene, otherwise through AOB.D.
HEBM White Sulphur (7S6)	Clint Davis	479-243-8646	A/G Balsinger Primary - A/A TFR/FW - A/A RW	125.125 134.675	166.6125	LEAD PLANES- Available through dispatch.
HEBM Townsend ASGS(T)	Brian Butler	970-946-8068	A/G American Fork Primary - A-G Secondary - A/A TFR/FW - A/A RW		169.1500 172.7500	AERIAL SUPERVISION- Relief ATGS avail on request through dispatch.
ATGS	Dave Robinson	928-606-2694	A/G Woods Creek Primary - A/G TFR/FW - A/A TFR/FW - A/A RW	119.100 128.250	169.2875 166.3375	SEATS- A available through Dispatch
ATGS(T)	Jason Longfellow	386-212-9871				
	Chad Smitherman	386-937-0660				

HELICOPTERS

FAA N#	T Y	MAKE/ MODEL	BASE	START	AVAIL	REMARKS	FAA N#	T Y	MAKE/ MODEL	BASE	START	AVAIL	REMARKS
N948CH	1	CH-47	7S6	0800	0900	R1 Prepo	N406RG	1	Puma	Townsend	0800	0900	R1 Prepo
N353RC	2	UH-1H	7S6	0800	0900	R1 Prepo	N70K	1	UH-60A	Townsend	0800	0900	Complex
N210MA	2	Bell 210	7S6	0800	0900	R1 Prepo	N4247V	2	58T	HLN	0800	0900	R1 Prepo
H-14HX	3	Bell 407	7S6	0800	0900	EU/Complex	N401HQ	3	AS350B3	HLN	0800	0900	Forest Ship
N286G	3	Bell 407	Townsend	0800	0900	CWN/R1 Prepo							

TASK/MISSION/ASSIGNMENT (Type/ function includes: Air Tactical, Retardant, Recon, Personnel Transport, Bucket Operations, SAR, etc.)	NAME OF PERSONNEL OR CARGO (If applicable) or instructions for tactical aircraft	MISSION START	FLY FROM	FLY TO
Recon	As Requested	As Requested		
Bucket Support / Supply Missions	As Requested	As Requested		
Personnel Transport	As Requested	As Requested		
Aerial Supervision	As Requested	As Requested		

INFORMATION SECTION

Phone: 406-426-9612 (8 a.m. – 8 p.m.)

Facebook: <https://www.facebook.com/HLCNF>

Twitter: <https://twitter.com/lewisandClarkNF>

Inciweb: <https://inciweb.nwcg.gov/incident/7681/>

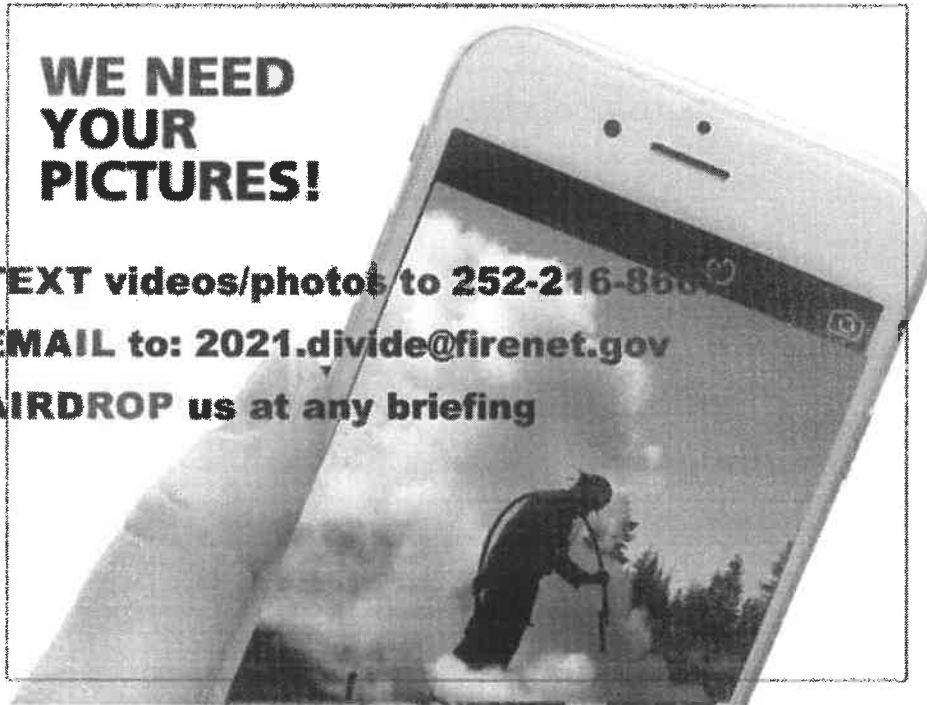
Mailing Address: YOUR NAME, Divide Fire Complex, SA RED IMT1 Public Information Shopt, 204 W. Folsom, White Sulphur Springs, MT 59645

**WE NEED
YOUR
PICTURES!**

TEXT videos/photos to 252-216-8666

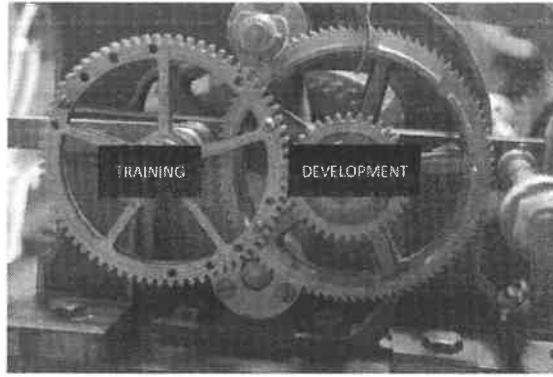
EMAIL to: 2021.divide@firenet.gov

AIRDROP us at any briefing



TIPS: Recording Video? Please do so in LANDSCAPE MODE. Please include information about who took the photo and any details about what you are shooting.

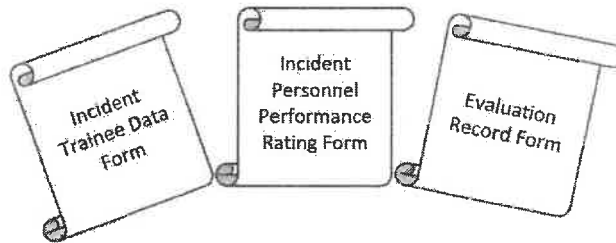
TRAINING MESSAGE



Check-in – If you have a position task book (PTB), please scan the QR code or click the link below to initiate the check-in process with the Incident Training Specialist. Please complete the form in its entirety. Upon completion, at your earliest convenience, **please email a copy of your qualification card and position task book cover to Al Hoke at ahoke@gfc.state.ga.us.**

For your convenience, an electronic ICS-225 or ICS-226 and Evaluation Record will be sent to you after you complete the check-in process. Electronic Evaluation Records, Trainee Data Forms can also be provided.

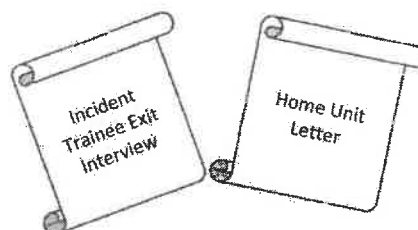
<https://forms.office.com/g/25cqnByq71>



Demob – In order to receive credit for your assignment, you must close out with the Incident Training Specialist prior to departure.

Close out requirements include:

1. Ensure your trainer(s)/evaluator(s) has/have initialed completed tasks in your PTB;
2. Obtain an Incident Performance Rating (please sign in the appropriate block at the bottom of the form);
3. Obtain an Evaluation Record;
4. If evaluator initialed #1 on your Evaluation Record, ensure he/she signs as final evaluator (located on the backside of your PTB cover page);
5. Email all documentation (including item #4, when appropriate) to ahoke@gfc.state.ga.us;
6. Please scan the QR code or click the link below to complete the Incident Trainee Exit Interview with the Incident Training Specialist.



FINANCE SECTION

- Please print **CLEARLY AND LEGIBLY** on CTRs and Shift Tickets with supervisor's signature.
- When you send in your time via email, you will receive an auto-reply saying it was received. If you did not, then resend.
- Send your CTRs and Shift Tickets to the email below that correlates with the fire you are working.
 - 2021.divide.finance@firenet.gov
 - *includes Balsinger and Ellis fires*
 - 2021.americanfork.finance@firenet.gov
 - *includes American Fork fire*
 - 2021.woods creek.finance@firenet.gov
 - *Includes Woods Creek fire*
- On CTRs and Shift Tickets, please document what fire and division you are working on in the remarks section.
- If you are claiming **Hazard Pay (HP)** on your CTR, please document in remarks section what you were doing.
- Please remember to take at least a 30-minute break every 8-hours. If a break is not taken, please document in remarks section on the bottom the CTR reason why break was not taken.
- Contact Finance Section via email 2-days prior to your scheduled **demob** date.
- ADs please make sure you have sent in your **Casual Hire** form to the correct email address above corresponding to the fire listed on your resource order.

Finance Remote Processing Procedures

To the right is access to electronic Finance forms. You can access them via the QR code or the URL. On each form are four buttons PRINT, RESET, SAVE and EMAIL. You can complete these forms on your cell phone, tablet or laptop. They are Adobe PDF forms so you will need a PDF reader app on your device. The forms were created on a laptop so the commands in your cell phone and tablet do not allow for the Save and Print functions to work. You will need to use your app's functionality to Save or Print. Once you have completed the appropriate form for your resource please email to your supervisor for approval.

Supervisors can use their app to apply a signature or just type /s/ your name on the approval line. After approving please email the approved form back to the resource for their record and to the correct finance email:

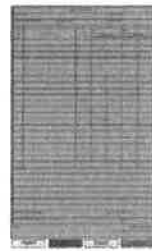
2021.americanfork.finance@firenet.gov

2021.divide.finance@firenet.gov

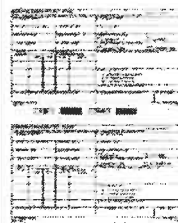
Resources, please send photos or electronic copies of Casual Hire forms, contracts, Cooperative agreements, Vehicle inspection, Manifests and resource orders to the correct finance email:

2021.americanfork.finance@firenet.gov

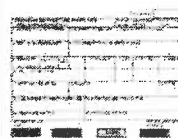
2021.divide.finance@firenet.gov



Crew Time
Report



Shift Ticket



Emergency Fuel
and Oil Ticket



General
Message



Tentative DEMOB List

Divide Complex and American Fork

INCIDENT NAME	DEMOB DATE	REQ #	RESOURCE NAME	KIND	TRV	CITY	STATE
DIVIDE COMPLEX	07/31/2021	E-44	GIST ENGINE	ENG4	POV	CASCADE	MT
DIVIDE COMPLEX	07/31/2021	O-30	BEST PRACTICE MED.	EMPF	POV	BILLINGS	MT
AMERICAN FORK	07/31/2021	O-53	BYRD, ROCK MCINTYRE	TFLD	AOV	HARLOWTON	MT
DIVIDE COMPLEX	07/31/2021	O-77	MARKHAM, TODD JAMES	TFLD	AR	MARQUETTE	MI
DIVIDE COMPLEX	08/01/2021	C-8	BLUE MTN CONT.	HC2	POV	BENTON CITY	WA
DIVIDE COMPLEX	08/01/2021	E-22	AUSTIN LOGGING	SKD3	POV	WOLF CREEK	MT
DIVIDE COMPLEX	08/01/2021	E-35	PEANUT PIE ENT.	ENG6	POV	BASIN	MT
DIVIDE COMPLEX	08/01/2021	E-37	HE TASK FORCE KING MTN. FOR.	MISC	POV	HELENA	MT
DIVIDE COMPLEX	08/01/2021	E-47	BAKKEN,A10058	ENG4	POV	TOWNSEND	MT
DIVIDE COMPLEX	08/01/2021	E-49	SHERRILL FT4C-120	FEL1	POV	LINCOLN	MT
DIVIDE COMPLEX	08/01/2021	E-51	SKIDDER, T2 - 536196	SKD2	AOV	KALISPELL	MT
DIVIDE COMPLEX	08/01/2021	E-52	SKIDDER, T2 - 577038	SKD2	POV	KALISPELL	MT
DIVIDE COMPLEX	08/01/2021	E-60	FRONT LINE EMS LLC	RES	POV	VALE	CO
DIVIDE COMPLEX	08/01/2021	O-37	KASHIAN, EMMA	EMTF	POV	HAMILTON	MT
AMERICAN FORK	08/01/2021	O-63	GONZALES, RACHAEL	PIOF	REN	FORT COLOLINS	CO
DIVIDE COMPLEX	08/01/2021	O-79	KEATING, BRIAN	DIVS	AOV	DENVER	CO
DIVIDE COMPLEX	08/01/2021	O-90	KARP, EVAN ELLIOT	HEQB			
AMERICAN FORK	08/02/2021	E-18	ROCKY MTN FIRE SUPP.	ENG6	POV	CASCADE	MT
DIVIDE COMPLEX	08/02/2021	E-41	FLAME CHASER ASSOC.	ENG6	POV	BROWNING	MT
DIVIDE COMPLEX	08/02/2021	E-64	ROCKY MOUNTAIN FIRE SUP	WTS2	POV	CASCADE	MT
DIVIDE COMPLEX	08/02/2021	O-4	DELASANTOS, BRIAN W	TFLD	AOV	CENTENNIAL	CO
DIVIDE COMPLEX	08/03/2021	C-5	OREGON WOODS, INC.	HC2	POV	EUGENE	OR
AMERICAN FORK	08/03/2021	E-2	ROCKY MTN FIRE SUPP.	ENG3	POV	WHITE SULFUR SPRINGS	MT
DIVIDE COMPLEX	08/03/2021	E-39	DESERT HILLS FIRE DIST.	ENG6	POV	LAKE HAVASU CIYT	AZ
AMERICAN FORK	08/03/2021	E-59	GREELEY FIRE - BRUSH 2	ENG6		GREELEY	CO
DIVIDE COMPLEX	08/03/2021	E-71	BULL CREEK FOR.	SKD2	POV	SEALY LAKE	MT
DIVIDE COMPLEX	08/03/2021	E-72	WIRTH 6CRO4644	EXCA	POV	WOLF CREEK	MT
DIVIDE COMPLEX	08/03/2021	E-75	BAKKEN,CASTLE MTN - C64602	ENG3			
DIVIDE COMPLEX	08/03/2021	O-106	KENNEDY JR, THOMAS R	STPS	AR	SAVANNAH	GA
AMERICAN FORK	08/04/2021	E-10	CEDAR MTN - E-70	ENG6	POV	DUCK CREEK VILLAGE	UT
DIVIDE COMPLEX	08/04/2021	E-40	T6X - AZ-GNV - 968DE	ENG6	POV	GREEN VALLEY	AZ
DIVIDE COMPLEX	08/04/2021	E-50	24/7 LLC - AT4C	FEL1	POV	WHITE SULPHUR SPRINGS	MT
DIVIDE COMPLEX	08/04/2021	E-73	MIKE WIRTH CON.	TDMP		HELENA	MT
DIVIDE COMPLEX	08/04/2021	E-81	MIKE WIRTH CON.	TDMP	POV	HELENA	MT
DIVIDE COMPLEX	08/04/2021	E-83	MIKE WIRTH CON.	EXCA	POV	HELENA	MT
AMERICAN FORK	08/04/2021	O-9	LOWELL, DANIEL L	TFLD	AOV	WINDSOR	CO
AMERICAN FORK	08/04/2021	O-13	VOSE, CHRISTIAN DANIEL	GISS			
DIVIDE COMPLEX	08/04/2021	O-13	KLINDT, MATTHEW STEVEN	DIVS	AR	GAINESVILLE	FL
DIVIDE COMPLEX	08/04/2021	O-145	BUCHI, DUANE ARBON	PIOF	POV	ULM	MT

IF YOU ARE FLYING YOU MUST CONTACT DEMOB AT LEAST 3 DAYS BEFORE YOUR DEMOB DATE TO GET A FLIGHT.

On your demob day, or last work day, personnel should:

1. Turn in all supplies, radios and computer equipment checked out from the incident.
2. They should ensure that all Unit Logs and evaluations are submitted to Documentation electronically. 2021.divide.docs@firenet.gov
3. Go to the Ground Support Unit for equipment inspections.
4. Go through weed wash and obtain a receipt to verify that the equipment has been cleaned. Return that receipt to demob (this can be done virtually if necessary by emailing a picture of the receipt to: 2021.divide.demob@firenet.gov).
5. Go to the Time Unit to complete time and review their final OF-288 or OF-286. This may be done virtually if necessary.
6. Report back to the Demobilization Unit to verify travel information home, including ETD/ETA and RON locations. This can be done virtually if necessary.

Call Demob at 937-506-6181 or 434-249-9915 if you have questions.

Email: 2021.divide.demob@firenet.gov

Logistics Message

07/31/21

Ordering

Orders should be sent to the below ordering managers (ORDM) by noon for cache orders. For all other orders please have orders to the ordering managers by 0800 hours or 1500 hours. Orders should be routed as shown below:

Divide Complex Orders

Coreen Francis, ORDM

coreen_francis@firenet.gov

American Fork & Woods
Creek Orders

Darrius Truss, ORDM

darrius_truss@firenet.gov

NEW Weed Wash Hours: 0730 to 1300 and 1430 to 2000.

IAP Map

American Fork Fire
MTHLF005087

8/1/2021

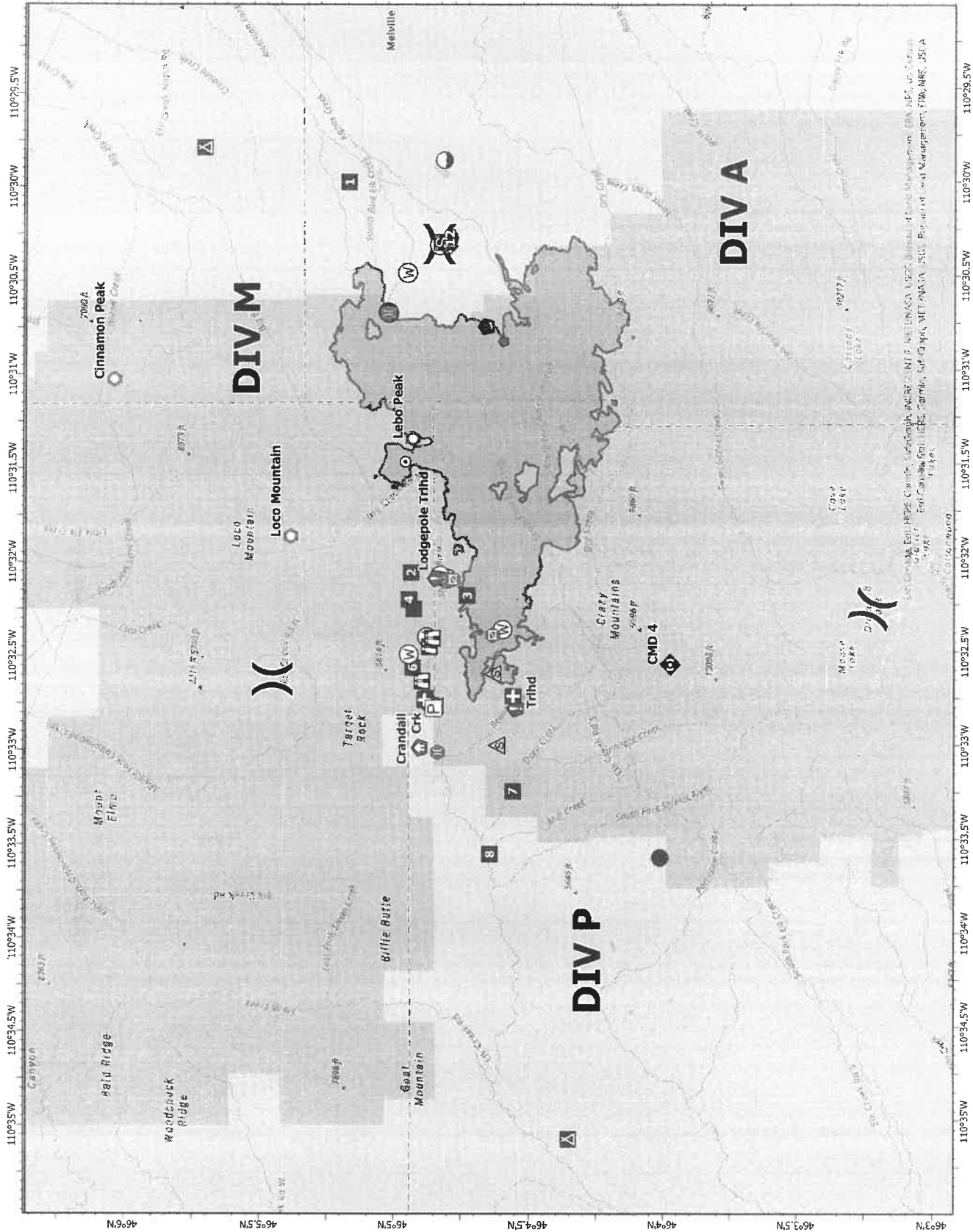
14,397 acres at 7/30/2021 at 2040



- | | | | |
|--|----------------------|--|-------------------------------|
| | Dip Site | | Stream Crossing |
| | Helipad | | Resource Location |
| | Division Break | | Repair Point |
| | Medical | | Fence - Cut/Damaged |
| | Drop Point | | Door Push |
| | Camp | | Mobile Weather Unit |
| | Staging Area | | Repair |
| | Lookout | | Safety Zone |
| | Hot Spot - Spot Fire | | Hazard |
| | Other | | Water Source |
| | Landmark | | Wildfire Daily Fire Perimeter |
| | Gate | | Label Point |
| | Bridge | | Pump |
| | Structure Wap | | |



7/31/2021 1750
Acres From IIS
North American, 1985 Datum



IAP Map

Divide Complex
MTHLF005079

August 1, 2021 Day

Appx 9,738 ac at
7/30/21 2250



Div U

Balsinger
Fire (Divide
Complex)

Div T

Div I

Div E/Q

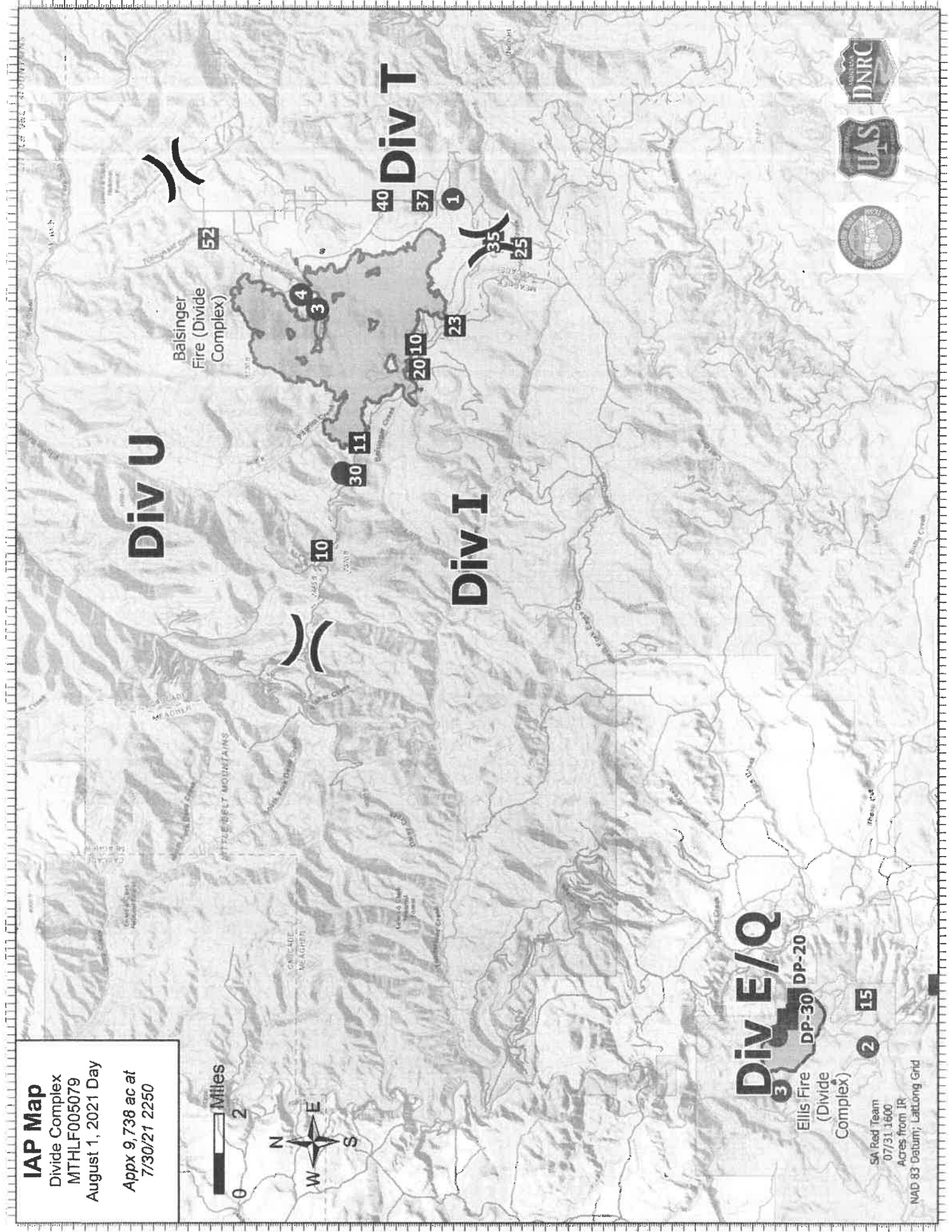
Ellis Fire
(Divide
Complex)

DP-30 DP-20

2 15

SA Red Team
07/31/1600
Acres from IR

NAD 83 Datum; Lat/Long Grid



Operations

Woods Creek

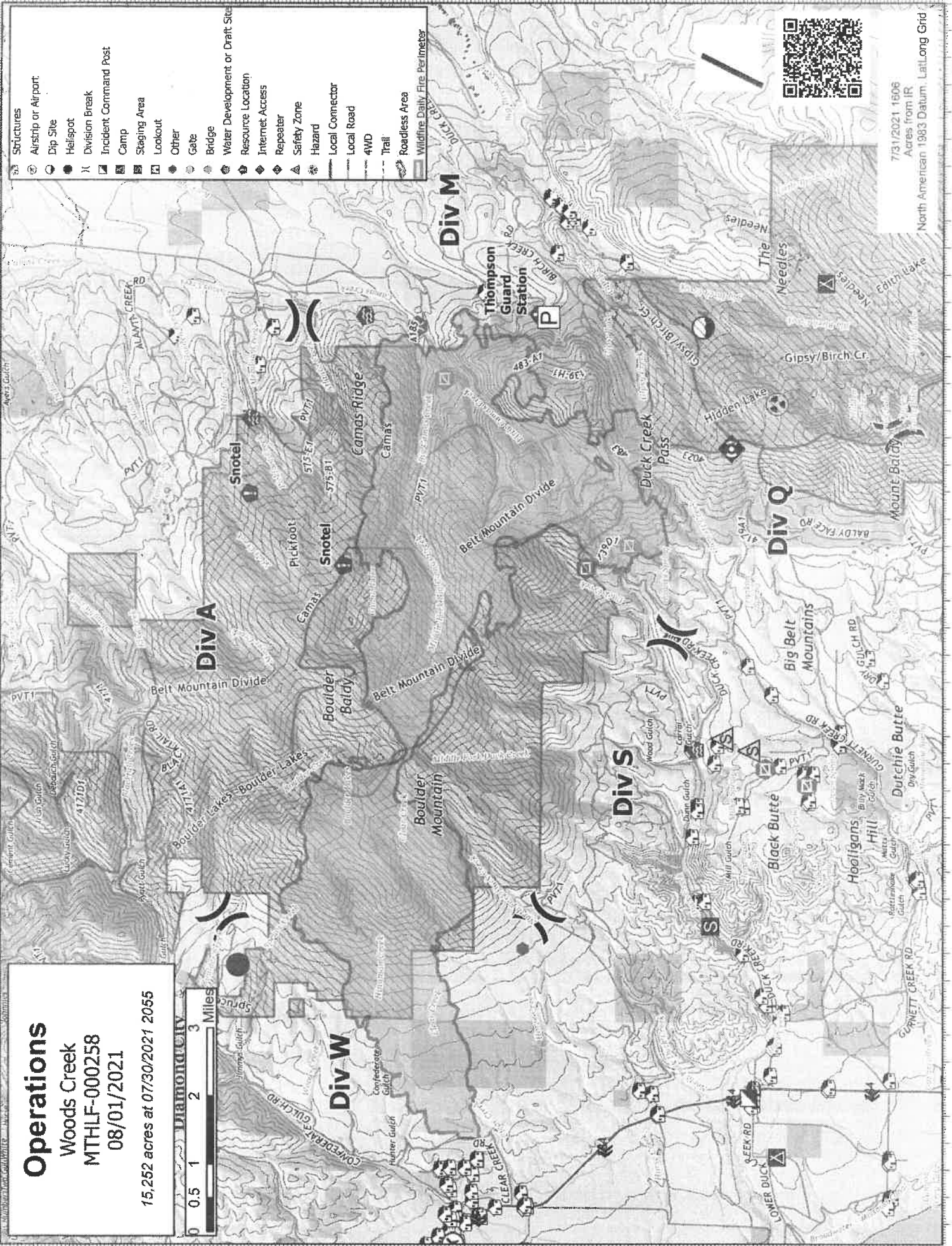
MTHLF-000258

08/01/2021

15.252 acres at 07/30/2021 2055



- Structures
- Airstrip or Airport
- Dip Site
- Helispot
- Division Break
- Incident Command Post
- Camp
- Staging Area
- Lookout
- Other
- Gate
- Bridge
- Water Development or Draft Site
- Resource Location
- Internet Access
- Repeater
- Safety Zone
- Hazard
- Local Connector
- Local Road
- 4WD
- Trail
- Roadless Area
- Wildfire Daily Fire Perimeter



7/31/2021 1606
Acres from IR
North American 1983 Datum, Lat/Long Grid

PHONE LIST - RED TEAM - 07312021

Position	Name	Phone Number	Position	Name	Phone Number
COMMAND					
ICT1	Steve Parrish	850-524-1244	TIME	Kimberly Winkler	706-581-0310
ICT1 (t)	John "Patrick" Pearson	402-630-0685	TIME (t)	Ivette Gonzalez	239-220-4787
			COST	Patrick McClellan	812-876-4280
			COMP	Diane Lowder	501-246-6277
LOFR	David Parker	910-546-6202	COMP	Alice Barnett	865-243-6222
LOFR (t)	Stephanie Allison	662-763-8374	PROG (t)	Shawn Hendrickson	865-228-3951
LOFR (t)	Edwin Christopher	208-859-8525	PLANNING		
Covid	Mike Buchanan	740-215-8432	PSC1	David Berens	601-319-2906
PIO1	Catherine Hibbard	413-412-2959	PSC1 (t)	Jason Braunstein	434-249-9915
PIO1	Bonnie Strawser	252-423-0815	RESL	Jessica Valdez	817-915-9413
PIO2 (t)	John Nichols	501-282-9634	RESL	Brittany Phillips (virtual)	850-693-3997
PIO2 (t)	Timothy Webb	231-649-2880	RESL (t)	William "Ed" Bratcher	318-623-9097
PIO2 (t)			RESL (t)	Sue Sobleski	231-342-0318
			SCKN (t)	Sarah Bridges	828-541-1082
PIO2 (t)			SCKN (t)	Kandra Scott (virtual)	334-224-4163
PIO2 (t)			ITSS	Eric Schmeckpeper	803-348-0005
PIO2 (t)			ITSS (t)	Joseph Ashby	678-360-8954
			ITSS (t)	Bridgette Webb	662-202-6210
SOF1	Tommy Hawkins	706-676-7538	GISS	Tommy Barnes	423-319-8463
SOF1	Michael Cook	205-544-6077	GISS	Clint Roberts	601-408-4276
SOFT1 (t)	John Fugitt	936-546-1882	IMET	Ian Morrison	808-282-6790
SOFT1 (t)	Jose Castro	470-432-2186	FBAN	Greg Titus	850-251-1254
			DEMOB		
			TNSP	Al Hoke	678-232-7107
OPERATIONS			LOGISTICS		
OSC1	Peter Myers	706-400-2015	LSC1	Leslie Morgan	662-907-0022
OSC1	Troy Floyd	706-346-2944	LSC1	Jane Arteaga	530-957-3558
OSC1	Michael Davis	936-219-7743	LSC1	Sally Browning	828-421-4608
OSC1	David Walker	401-536-4047	LSC1 (t)	Christopher Revels	864-490-4192
OSC2 (t)	Michael "Shane" Sturgill	423-202-6567	SPUL	Nina Donley	205-243-8816
OSC2 (t)	James Browning	828-200-0102	LSC2	Jim Aldridge	919-636-2471
OPBD	Chad Cook	828-360-4985	COML	Jerry Patrick	601-942-2786
STPS	Craig Robertson	540-353-7124	COML (t)	David Radzivil	954-553-6553
STPS (t)	Chad Stover	540-820-0252	ORDM	Darius Truss	
			ORDM (t)	Coreen Francis	
DIVS	Jeremy Kolaks	812-279-0848	FACL	Susanne Adams	715-783-0291
DIVS	Mike Ward	470-446-2274	GSUL	Martin "Pat" Wright	803-640-6248
DIVS	John Fry	814-571-2964	MEDL	Frederick Adler	479-238-6064
DIVS	Roy Rushing	850-373-8201	MEDL (t)	Richard D'Orazio	239-249-1855
DIVS (t)	Alex Scronce	864-490-5746	FDUL (t)	David Malone	706-833-7043
DIVS (t)	Edward Hardesty		RCDM	Lisa Meekins	252-455-3730
DIVS (t)			RCDM (t)	Andrew Thompson	530-957-3558
			SECM	Karen Bradford	423-851-4206
			SECM (t)	Michael Esters	601-750-7802
AIR OPERATIONS					
AOBD	John Fish	850-843-0977			
ASGS	Jack Finley				
ATGS (t)	David Robinson	928-606-2694			
HEBM (t)	Chad Smitherman				
FINANCE					
FSC1	Sandra Morris	770-670-0274			
FSC1 (t)	John Warner	936-546-3169			

MEDICAL PLAN (ICS 206 WF)

Controlled Unclassified Information//Basic

Medical Incident Report					
FOR A NON-EMERGENCY INCIDENT, WORK THROUGH CHAIN OF COMMAND TO REPORT AND TRANSPORT INJURED PERSONNEL AS NECESSARY.					
FOR A MEDICAL EMERGENCY: IDENTIFY ON SCENE INCIDENT COMMANDER BY NAME AND POSITION AND ANNOUNCE "MEDICAL EMERGENCY" TO INITIATE RESPONSE FROM IMT COMMUNICATIONS/DISPATCH.					
Use the following items to communicate situation to communications/dispatch.					
1. CONTACT COMMUNICATIONS / DISPATCH (Verify correct frequency prior to starting report) <i>Ex: "Communications, Div. Alpha. Stand-by for Emergency Traffic."</i>					
2. INCIDENT STATUS: Provide incident summary (including number of patients) and command structure. <i>Ex: "Communications, I have a Red priority patient, unconscious, struck by a falling tree. Requesting air ambulance to Forest Road 1 at (Lat./Long.) This will be the Trout Meadow Medical, IC is TFLD Jones. EMT Smith is providing medical care."</i>					
Severity of Emergency / Transport Priority	<input type="checkbox"/> RED / PRIORITY 1 Life or limb threatening injury or illness. Evacuation need is IMMEDIATE <i>Ex: Unconscious, difficulty breathing, bleeding severely, 2^o – 3^o burns more than 4 palm sizes, heat stroke, disoriented.</i> <input type="checkbox"/> YELLOW / PRIORITY 2 Serious Injury or illness. Evacuation may be DELAYED if necessary. <i>Ex: Significant trauma, unable to walk, 2^o – 3^o burns not more than 1-3 palm sizes.</i> <input type="checkbox"/> GREEN / PRIORITY 3 Minor Injury or illness. Non-Emergency transport <i>Ex: Sprains, strains, minor heat-related illness.</i>				
Nature of Injury or Illness & Mechanism of Injury			<i>Brief Summary of Injury or Illness (Ex: Unconscious, Struck by Falling Tree)</i>		
Transport Request			<i>Air Ambulance / Short Haul/Hoist Ground Ambulance / Other</i>		
Patient Location			<i>Descriptive Location & Lat. / Long. (WGS84)</i>		
Incident Name			<i>Geographic Name + "Medical" (Ex: Trout Meadow Medical)</i>		
On-Scene Incident Commander			<i>Name of on-scene IC of Incident within an Incident (Ex: TFLD Jones)</i>		
Patient Care			<i>Name of Care Provider (Ex: EMT Smith)</i>		
3. INITIAL PATIENT ASSESSMENT: Complete this section for each patient as applicable (start with the most severe patient)					
Patient Assessment: See IRPG page 106					
Treatment:					
4. TRANSPORT PLAN:					
Evacuation Location (if different): (Descriptive Location (drop point, intersection, etc.) or Lat. / Long.) Patient's ETA to Evacuation Location:					
Helispot / Extraction Site Size and Hazards:					
5. ADDITIONAL RESOURCES / EQUIPMENT NEEDS:					
<i>Example: Paramedic/EMT, Crews, Immobilization Devices, AED, Oxygen, Trauma Bag, IV/Fluid(s), Splints, Rope rescue, Wheeled litter, HAZMAT, Extrication</i>					
6. COMMUNICATIONS: Identify State Air/Ground EMS Frequencies and Hospital Contacts as applicable					
Function	Channel Name/Number	Receive (RX)	Tone/NAC *	Transmit (TX)	Tone/NAC *
COMMAND					
AIR-TO-GRND					
TACTICAL					
7. CONTINGENCY: <u>Considerations:</u> If primary options fail, what actions can be implemented in conjunction with primary evacuation method? Be thinking ahead.					
8. ADDITIONAL INFORMATION: Updates/Changes, etc.					
REMEMBER: Confirm ETA's of resources ordered. Act according to your level of training. Be Alert. Keep Calm. Think Clearly. Act Decisively.					