

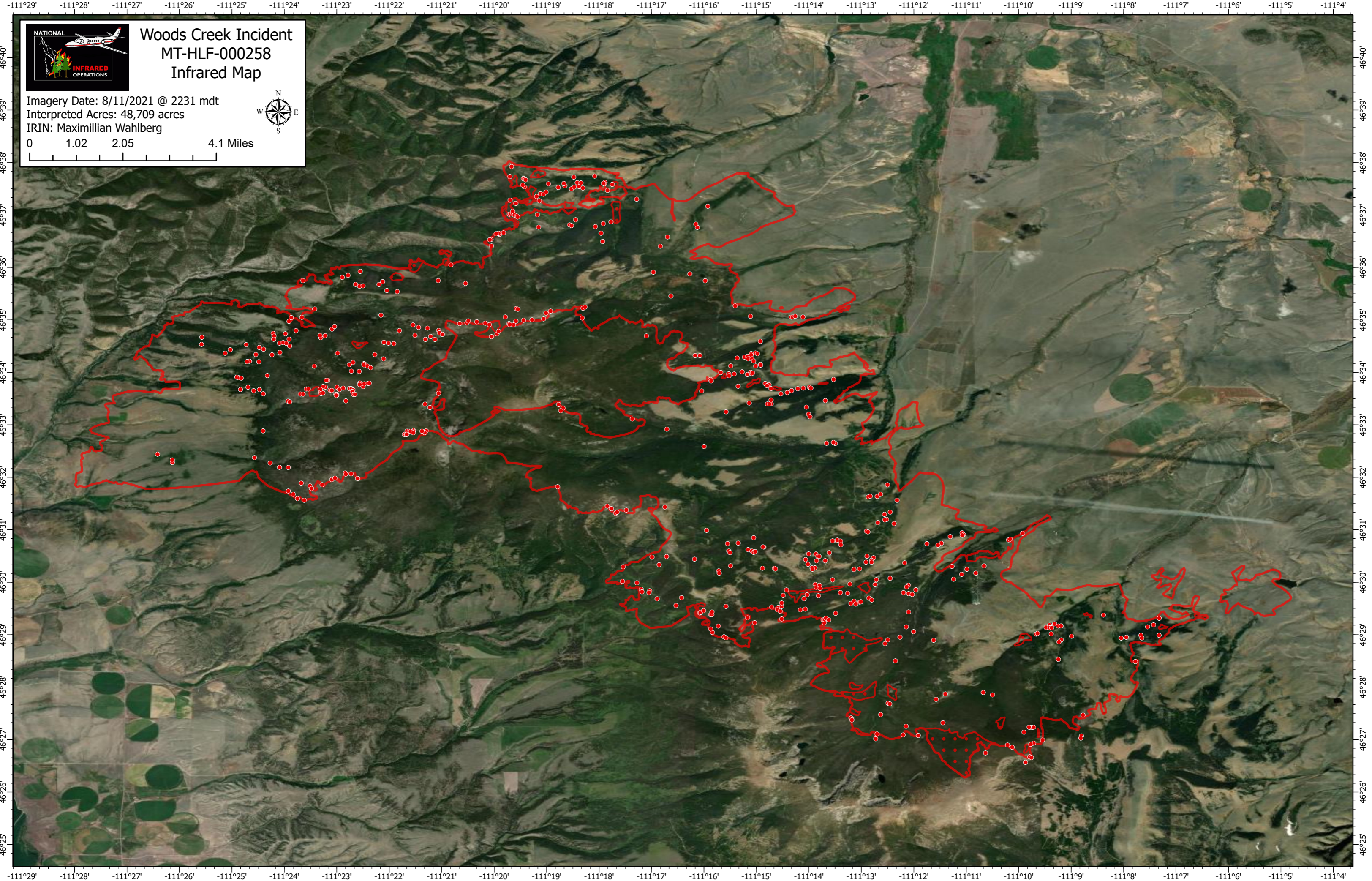
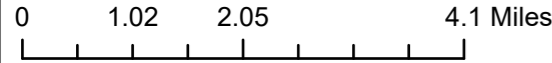


Woods Creek Incident

MT-HLF-000258

Infrared Map

Imagery Date: 8/11/2021 @ 2231 mdt
Interpreted Acres: 48,709 acres
IRIN: Maximillian Wahlberg



-111°29' -111°28' -111°27' -111°26' -111°25' -111°24' -111°23' -111°22' -111°21' -111°20' -111°19' -111°18' -111°17' -111°16' -111°15' -111°14' -111°13' -111°12' -111°11' -111°10' -111°9' -111°8' -111°7' -111°6' -111°5' -111°4'

46°40'
46°39'
46°38'
46°37'
46°36'
46°35'
46°34'
46°33'
46°32'
46°31'
46°30'
46°29'
46°28'
46°27'
46°26'
46°25'

46°40'
46°39'
46°38'
46°37'
46°36'
46°35'
46°34'
46°33'
46°32'
46°31'
46°30'
46°29'
46°28'
46°27'
46°26'
46°25'