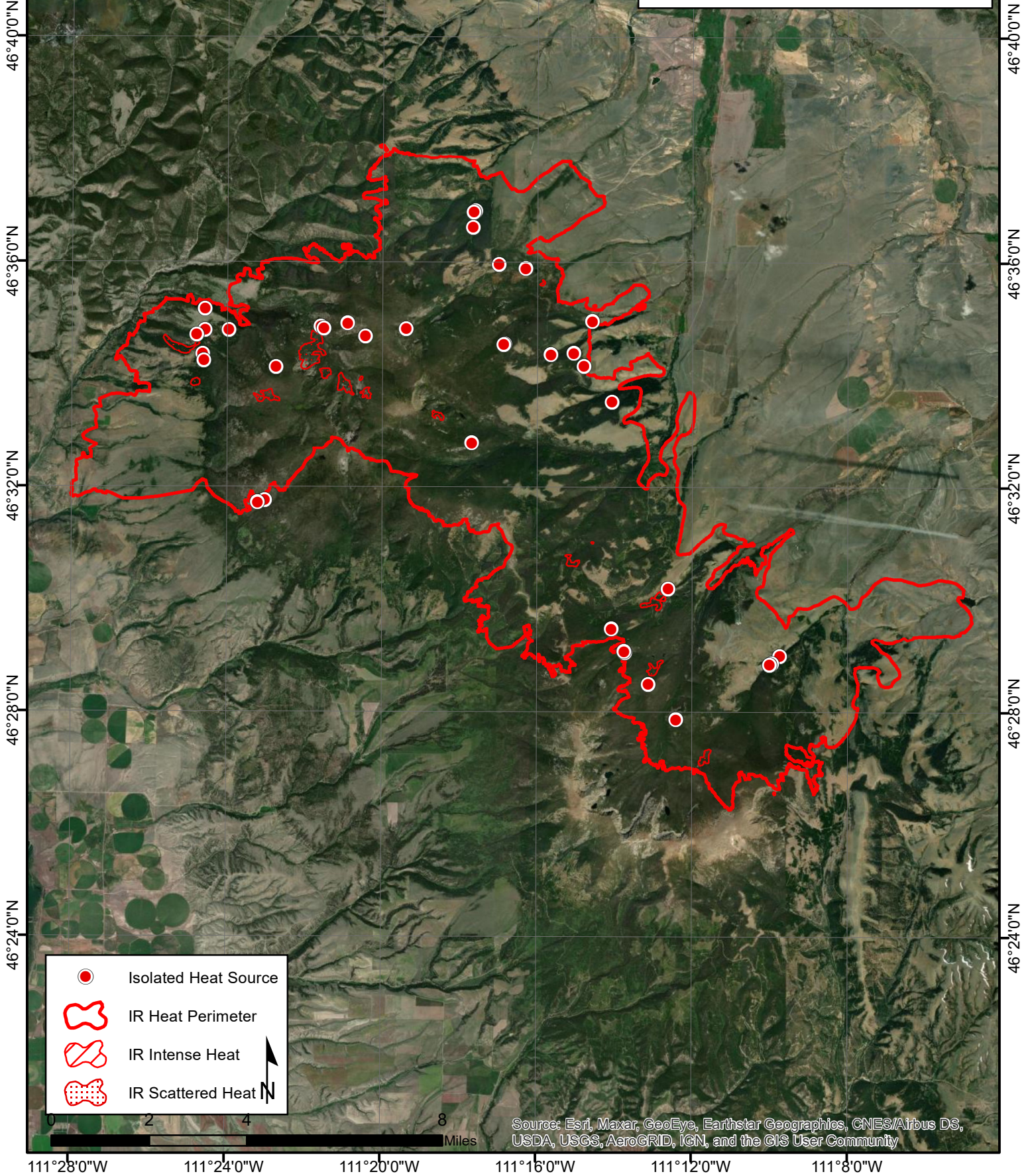




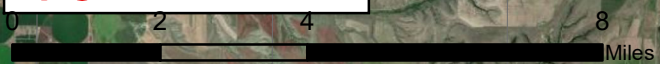


111°28'0"W 111°24'0"W 111°20'0"W 111°16'0"W 111°12'0"W 111°8'0"W

Woods Creek
MT-HLF-000258
Infrared Map - for 9/21/2021
Interpreted Acres: 55,448 (+ 3 ac)
IRIN: Trish Boll(t)
Imagery Acquired: 9/21/2021 @ 2237 MDT
UTM Zone 12N NAD83



-  Isolated Heat Source
-  IR Heat Perimeter
-  IR Intense Heat
-  IR Scattered Heat



Source: Esri, Maxar, GeoEye, Earthstar Geographics, CNES/Airbus DS, USDA, USGS, AeroGRID, IGN, and the GIS User Community

111°28'0"W 111°24'0"W 111°20'0"W 111°16'0"W 111°12'0"W 111°8'0"W