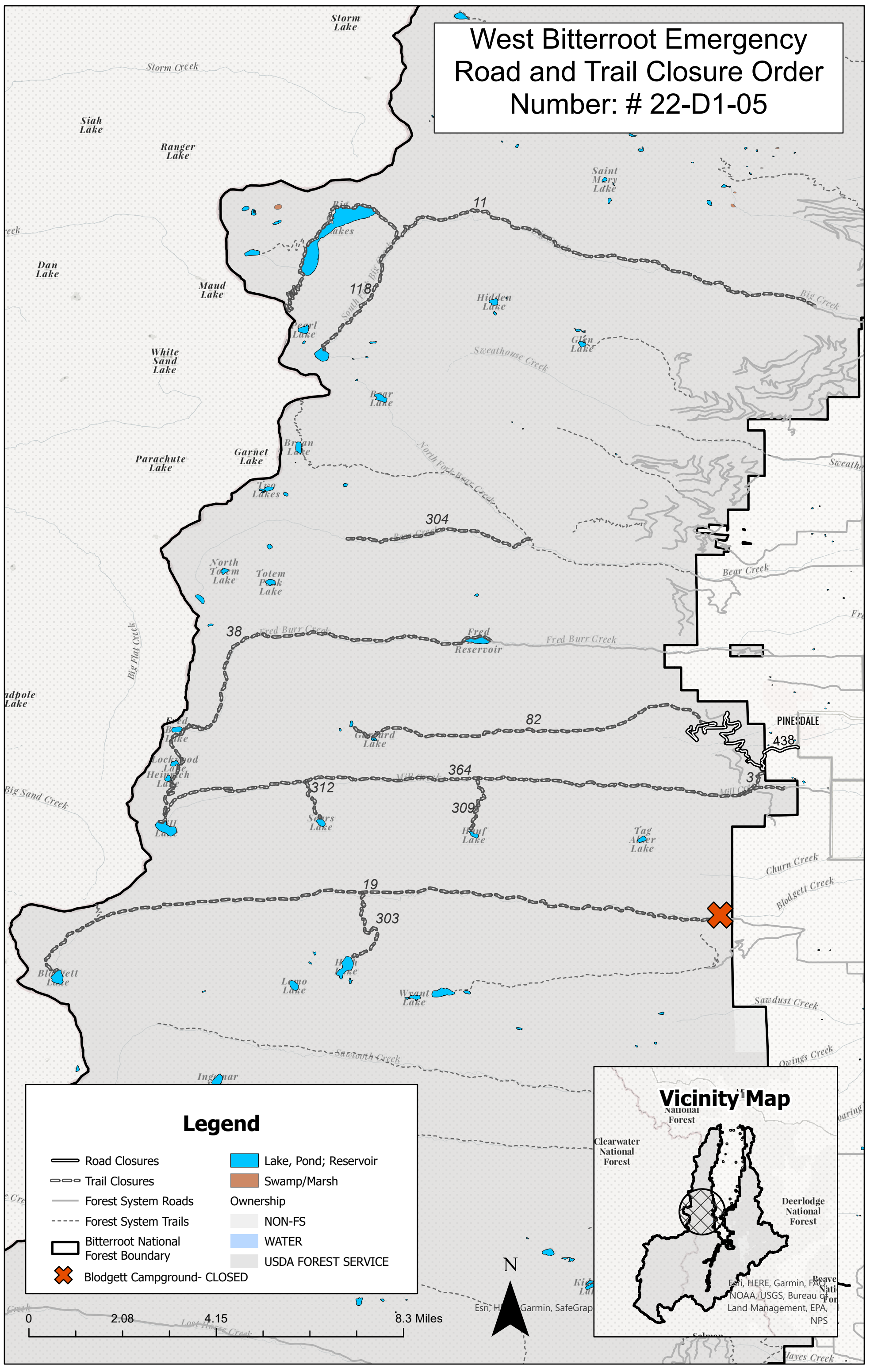


# West Bitterroot Emergency Road and Trail Closure Order Number: # 22-D1-05



## Legend

- |                                     |                       |
|-------------------------------------|-----------------------|
| Road Closures                       | Lake, Pond; Reservoir |
| Trail Closures                      | Swamp/Marsh           |
| Forest System Roads                 | Ownership             |
| Forest System Trails                | NON-FS                |
| Bitterroot National Forest Boundary | WATER                 |
| Blodgett Campground- CLOSED         | USDA FOREST SERVICE   |

