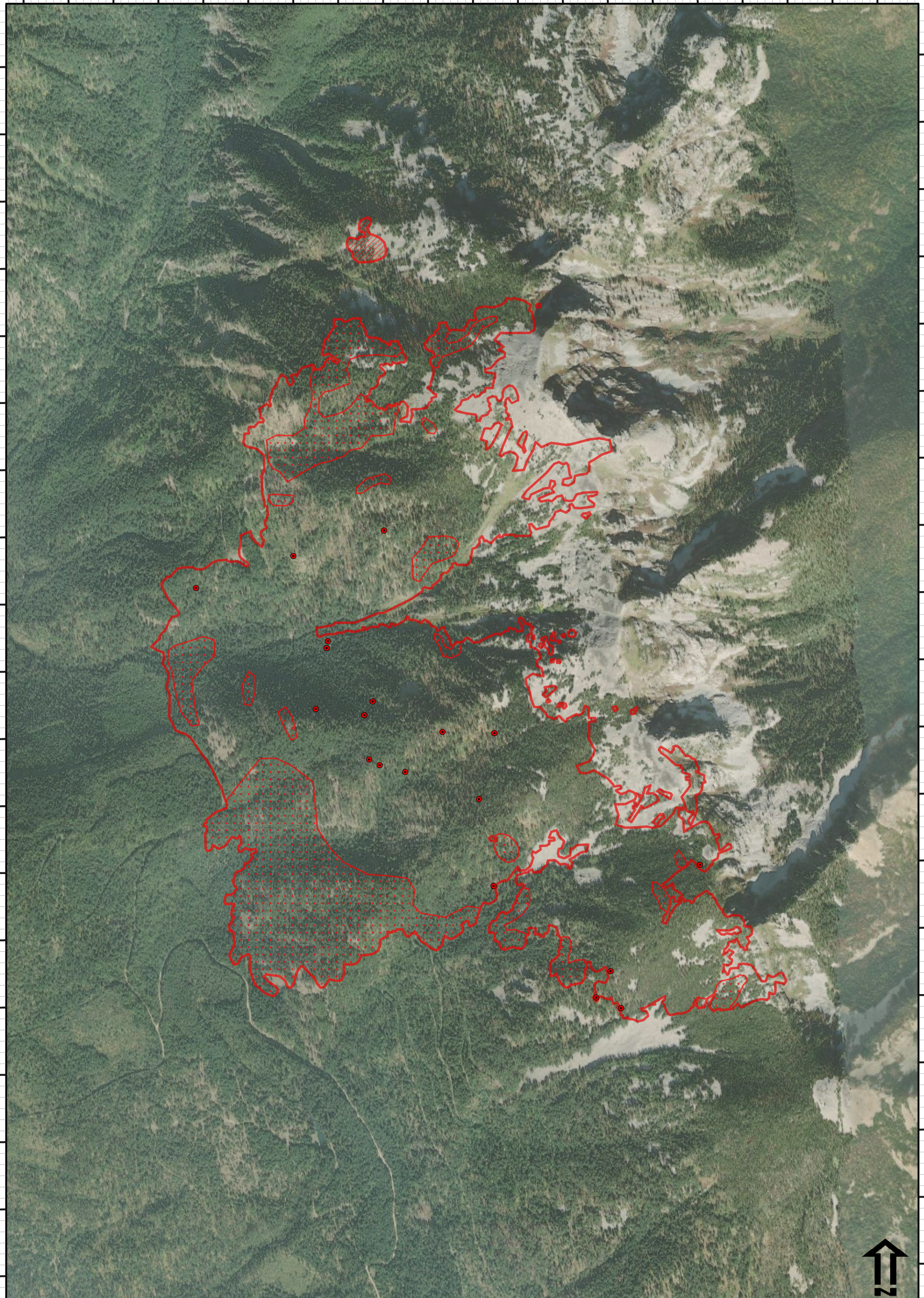






115°58'40"W 115°58'30"W 115°58'20"W 115°58'10"W 115°58'0"W 115°57'50"W 115°57'40"W 115°57'30"W 115°57'20"W 115°57'10"W 115°57'0"W 115°56'50"W 115°56'40"W 115°56'30"W 115°56'20"W 115°56'10"W 115°56'0"W 115°55'50"W 115°55'40"W 115°55'30"W



115°58'40"W 115°58'30"W 115°58'20"W 115°58'10"W 115°58'0"W 115°57'50"W 115°57'40"W 115°57'30"W 115°57'20"W 115°57'10"W 115°57'0"W 115°56'50"W 115°56'40"W 115°56'30"W 115°56'20"W 115°56'10"W 115°56'0"W 115°55'50"W 115°55'40"W 115°55'30"W

Billiard
MT-KNF-000235
Bull Gin Complex
MT-KNF-000261
9/21/2022

Infrared Heat Sources
 9/20/2022 1954 MDT
 1144 Interpreted Acres
 IRIN: Lindsey Kiesz

-  IR Heat Perimeter
-  IR Intense Heat
-  IR Scattered Heat
-  IR Isolated Heat Source

