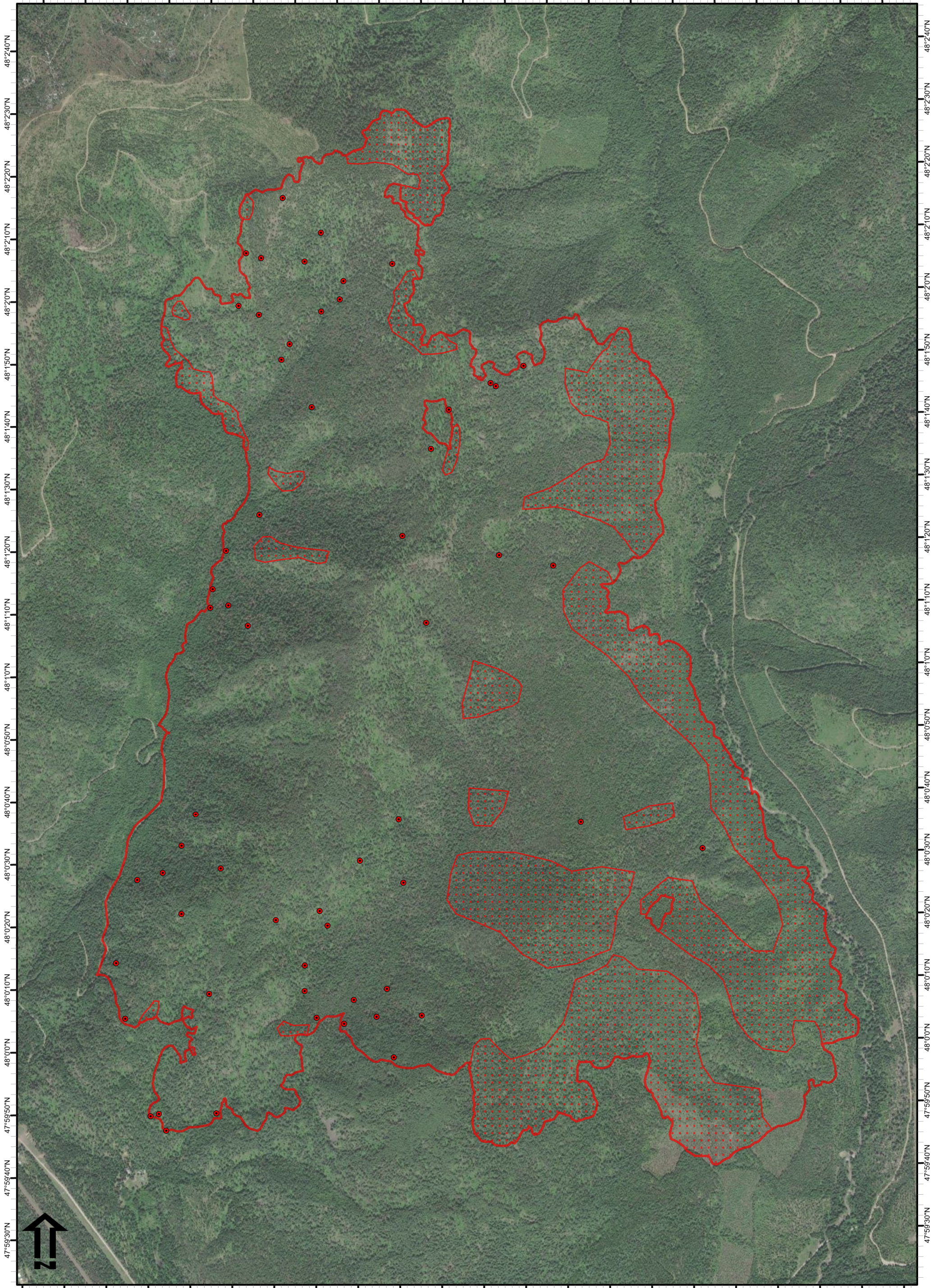





115°45'10"W 115°45'0"W 115°44'50"W 115°44'40"W 115°44'30"W 115°44'20"W 115°44'10"W 115°44'0"W 115°43'50"W 115°43'40"W 115°43'30"W 115°43'20"W 115°43'10"W 115°43'0"W 115°42'50"W 115°42'40"W 115°42'30"W 115°42'20"W 115°42'10"W 115°42'0"W 115°41'50"W



115°45'20"W 115°45'10"W 115°45'0"W 115°44'50"W 115°44'40"W 115°44'30"W 115°44'20"W 115°44'10"W 115°44'0"W 115°43'50"W 115°43'40"W 115°43'30"W 115°43'20"W 115°43'10"W 115°43'0"W 115°42'50"W 115°42'40"W 115°42'30"W 115°42'20"W 115°42'10"W 115°42'0"W 115°41'50"W

**Government**  
**MT-KNF-000240**  
**Bull Gin Complex**  
**MT-KNF-000261**  
**9/27/2022**

Infrared Heat Sources  
 9/26/2022 1955 MDT  
 2783 Interpreted Acres  
 IRIN: Lindsey Kiesz

-  IR Heat Perimeter
-  IR Scattered Heat
-  IR Isolated Heat Source

