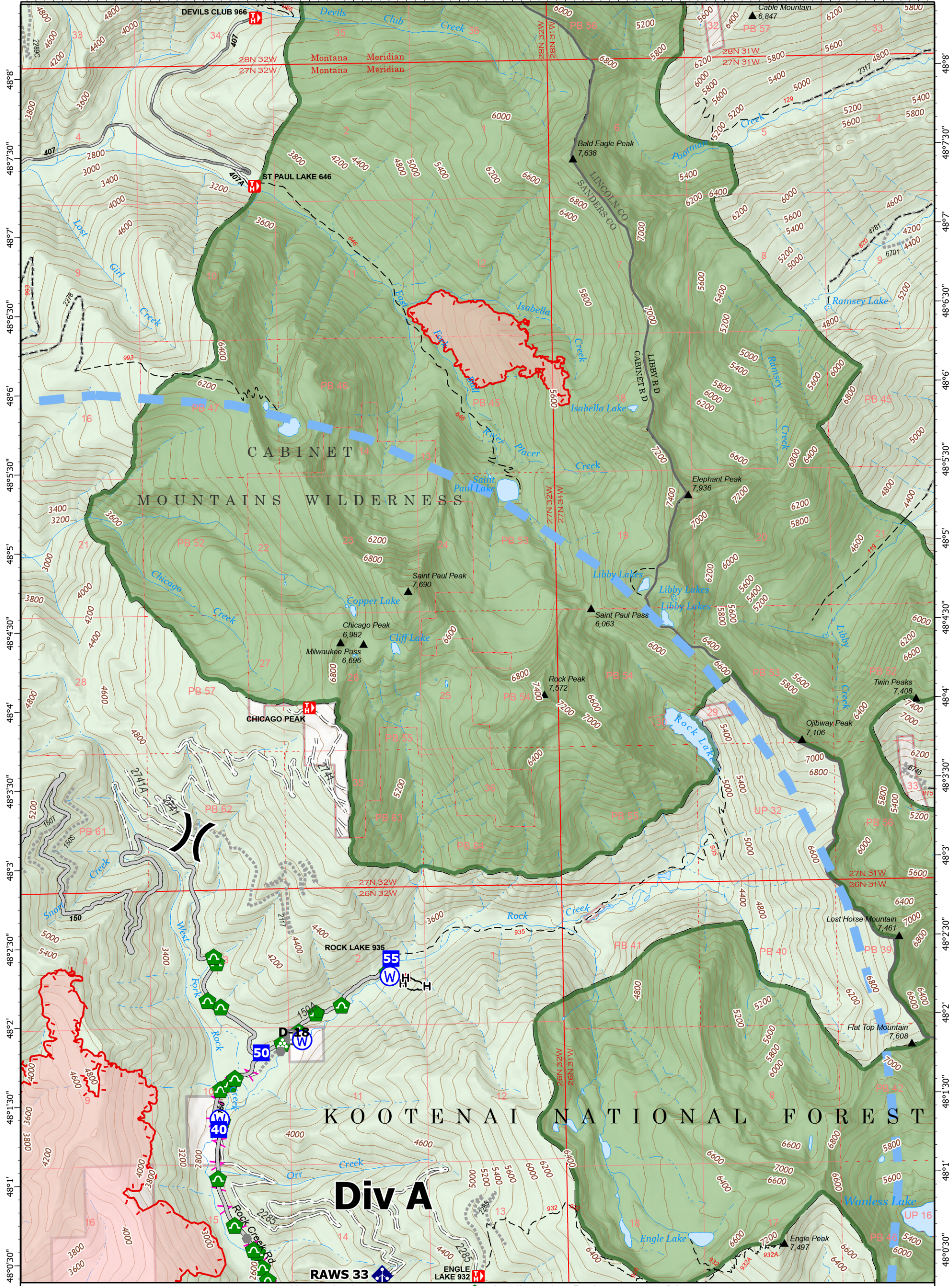
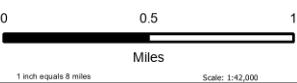


-115°44' -115°43'30" -115°43' -115°42'30" -115°42' -115°41'30" -115°41' -115°40'30" -115°40' -115°39'30" -115°39' -115°38'30" -115°38' -115°37'30" -115°37' -115°36'30" -115°36'



**Operations**

Isabella Lake  
MTKNF-000248  
264 acres  
09/13/2022  
Fire perimeter updated from  
IR on 9/11/2022 @ 2200



- ▬ Uncontained
- Wildfire Perimeter
- Label Point
- Division Break
- Drop Point
- Value at Risk
- Other
- Water Development or Draft Site
- Resource Location
- Repair Point

- Landing or Log Deck
- Dozer Push
- Culvert
- Mobile Weather Unit
- Repeater
- Water Source
- H Completed Hand Line
- ▲ Planned Fuel Break
- ▬ Access or Improved Road

- ▬ Other
- Temporary Flight Restriction
- Gravel Road
- Dirt Road
- Unimproved Road
- USFS Roads Closed
- Trail
- Federal Wilderness
- Forest Service Land



NR Remote Incident Support  
9/12/2022 2154  
North American 1983  
Datum: LatLong Grid

Operations