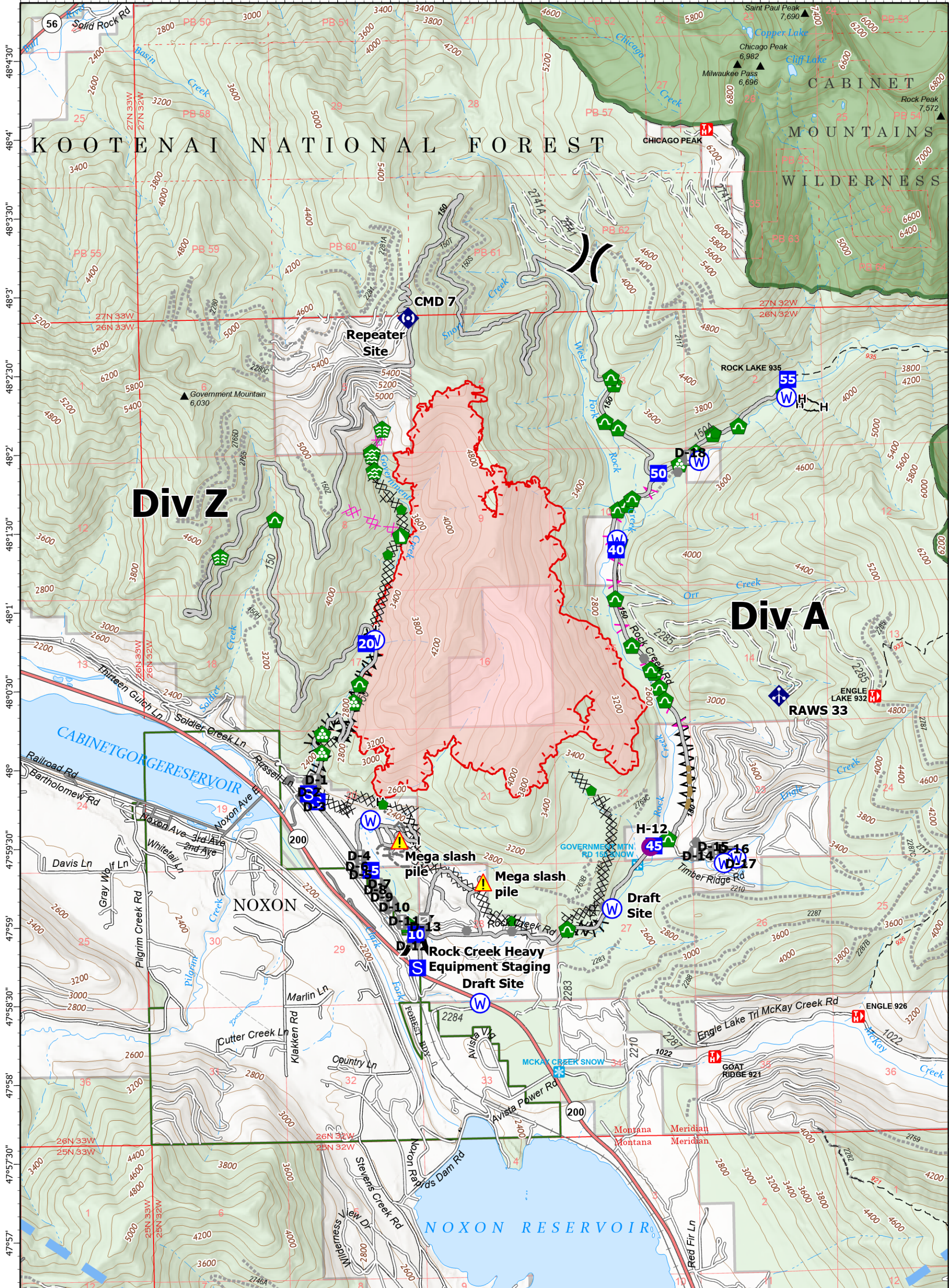


-115°48' -115°47'30" -115°47' -115°46'30" -115°46' -115°45'30" -115°45' -115°44'30" -115°44' -115°43'30" -115°43' -115°42'30" -115°42' -115°41'30" -115°41' -115°40'30" -115°40' -115°39'30"



**Operations**  
Government  
MTKNF-002240  
9/14/2022  
2,284 acres

Fire perimeter updated from IR on 9/11/2022 @ 2200

Scale: 1:42,500  
1 inch equals 8 miles

Helispot	Culvert	Completed Dozer Line	Wildfire Perimeter
Division Break	Mobile Weather Unit	Completed Fuel Break	Forest Service Land
Drop Point	Repeater	Completed Hand Line	Federal Wilderness
Staging Area	Hazard	Planned Dozer Line	State Primary Route
Value at Risk	Water Source	Planned Fuel Break	Gravel Road
Other		Access or Improved Road	Dirt Road
Gate		Other	Unimproved Road
Bridge		Road Repair	USFS Roads Closed
Water Development or Draft Site		Temporary Flight Restriction	Trail
Stream Crossing			
Resource Location			
Repair Point			
Landing or Log Deck			
Dozer Push			

Northern Rockies Incident Management Team  
  
 NR Remote Incident Support  
 9/14/2022 0623  
 North American 1983 Datum, Lat/Long Grid