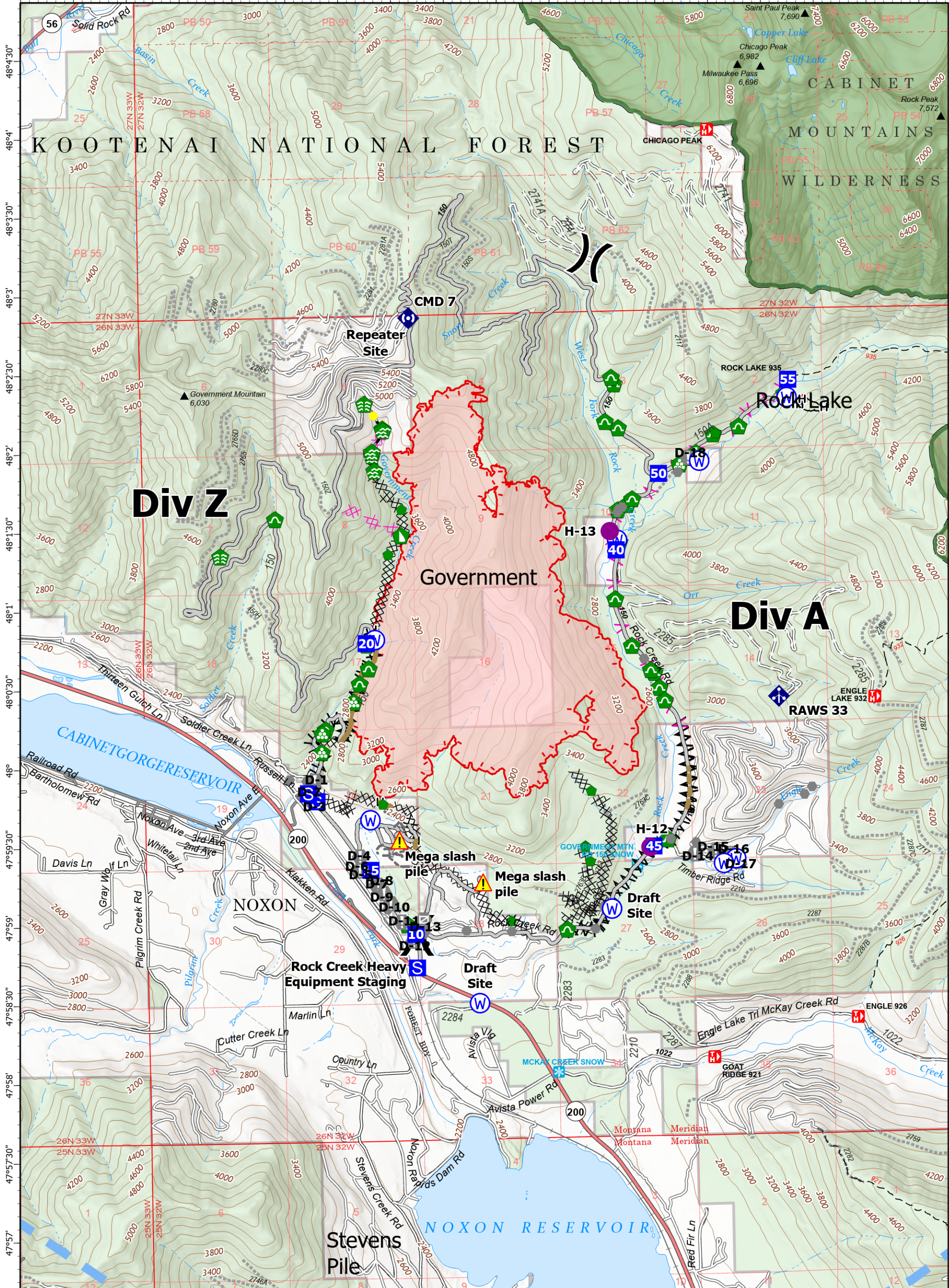


-115°48' -115°47'30" -115°47' -115°46'30" -115°46' -115°45'30" -115°45' -115°44'30" -115°44' -115°43'30" -115°43' -115°42'30" -115°42' -115°41'30" -115°41' -115°40'30" -115°40' -115°39'30"



**Operations**  
 Government  
 MTKNF-002240  
 9/15/2022  
 2,284 acres

Fire perimeter updated from  
 IR on 9/13/2022 @ 2140



0 0.5 1  
 Miles  
 Scale: 1:42,500  
 1 inch equals 8 miles

- |                                 |                     |                              |                     |
|---------------------------------|---------------------|------------------------------|---------------------|
| Helispot                        | Mobile Weather Unit | Completed Dozer Line         | Wildfire Perimeter  |
| Division Break                  | Repeater            | Completed Fuel Break         | Forest Service Land |
| Drop Point                      | Hazard              | Completed Hand Line          | Federal Wilderness  |
| Staging Area                    | Water Source        | Planned Dozer Line           | State Primary Route |
| Value at Risk                   | Other               | Planned Fuel Break           | Gravel Road         |
| Gate                            | Bridge              | Access or Improved Road      | Dirt Road           |
| Water Development or Draft Site | Stream Crossing     | Highlighted Feature          | Unimproved Road     |
| Resource Location               | Repair Point        | Other                        | USFS Roads Closed   |
| Landing or Log Deck             | Dozer Push          | Repair Line                  | Trail               |
| Culvert                         | Uncontained         | Road Repair                  |                     |
|                                 |                     | Temporary Flight Restriction |                     |



NR Remote Incident Support  
 9/15/2022 0547  
 North American 1983 Datum, Lat/Long Grid

Operations