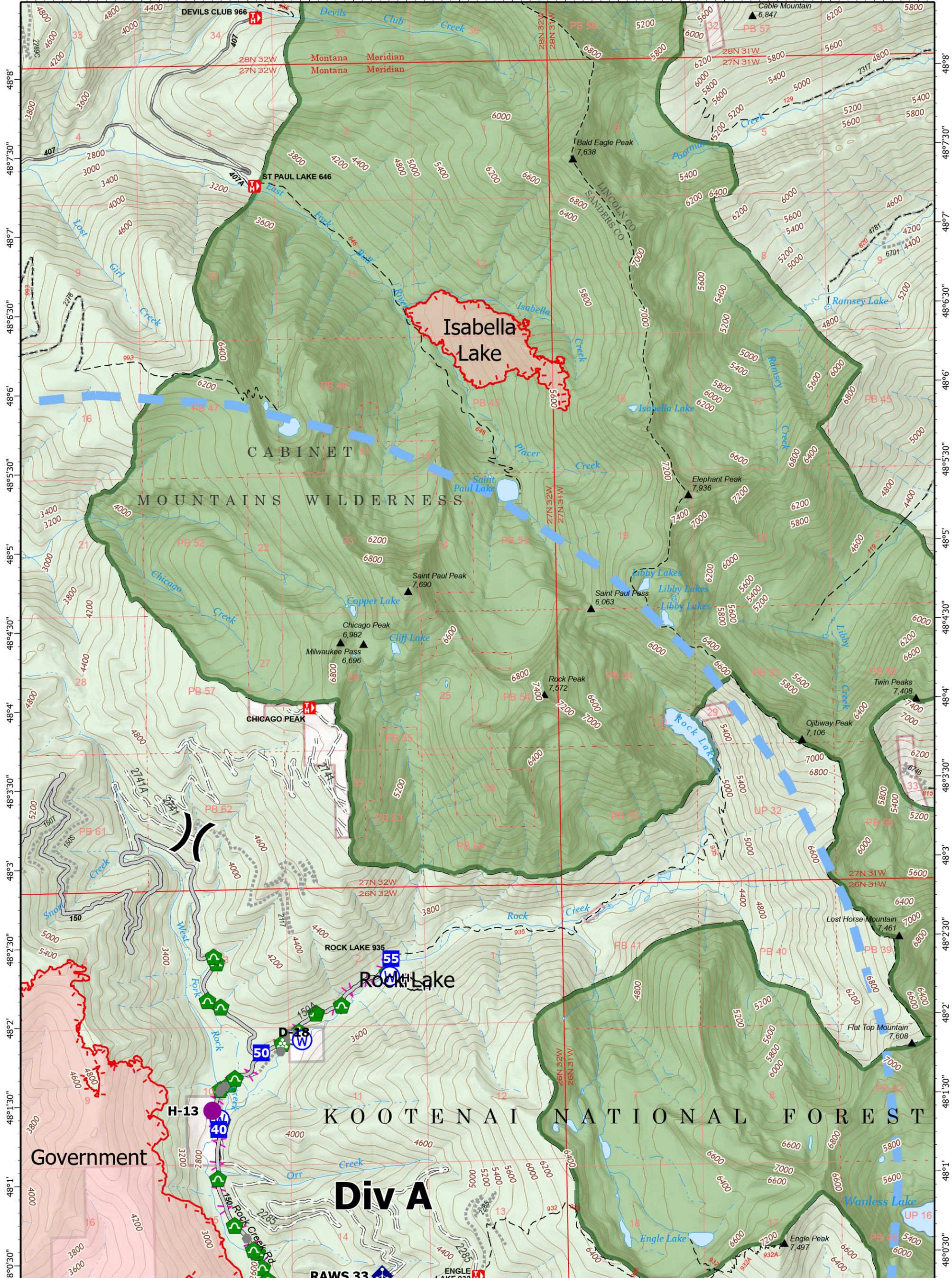
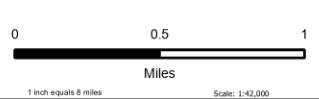


-115°44' -115°43'30" -115°43' -115°42'30" -115°42' -115°41'30" -115°41' -115°40'30" -115°40' -115°39'30" -115°39' -115°38'30" -115°38' -115°37'30" -115°37' -115°36'30" -115°36'



Operations

Isabella Lake
MTKNF-000248
277 acres
9/15/2022
Fire perimeter updated from
IR on 9/13/2022 @ 2140



- Label Point
- Helispot
- Division Break
- Drop Point
- Value at Risk
- Other
- Water Development or Draft Site
- Resource Location
- Repair Point
- Landing or Log Deck
- Dozer Push
- Culvert
- Mobile Weather Unit
- Repeater
- Water Source

- Uncontained
- Completed Hand Line
- Planned Fuel Break
- Access or Improved Road
- Other
- Temporary Flight Restriction

- Wildfire Perimeter
- Federal Wilderness
- Forest Service Land
- Gravel Road
- Dirt Road
- Unimproved Road
- USFS Roads Closed
- Trail



NR Remote Incident Support
9/15/2022 0548
North American 1983
Datum: LatLong Grid

Operations