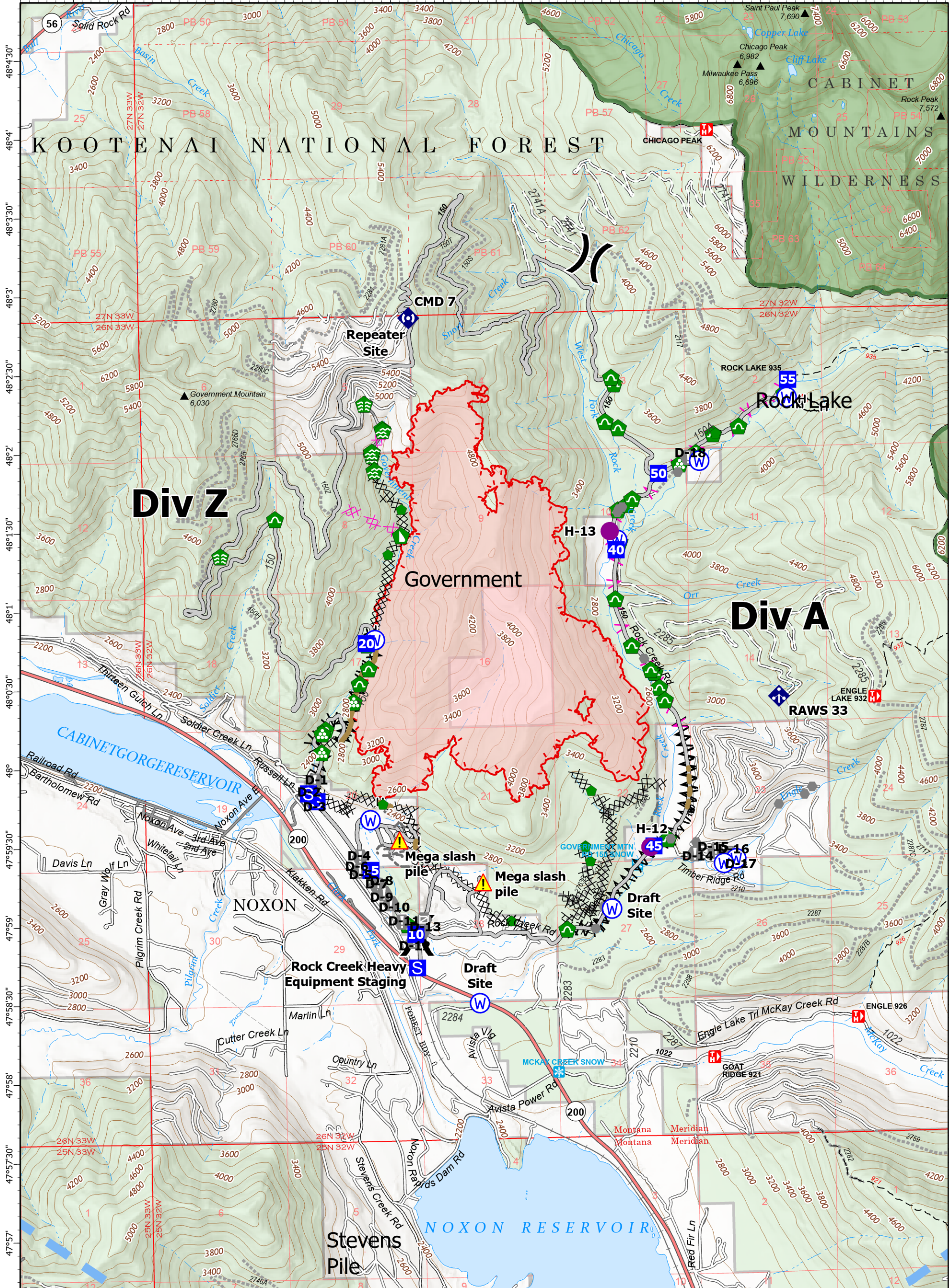


-115°48' -115°47'30" -115°47' -115°46'30" -115°46' -115°45'30" -115°45' -115°44'30" -115°44' -115°43'30" -115°43' -115°42'30" -115°42' -115°41'30" -115°41' -115°40'30" -115°40' -115°39'30"



Operations
Government
MTKNF-002240
9/16/2022
2,348 acres

Fire perimeter updated from IR on 9/15/2022 @ 2131

Helispot	Landing or Log Deck	Uncontained	Road Repair	Wildfire Perimeter
Division Break	Dozer Push	Completed Dozer Line	Temporary Flight Restriction	Forest Service Land
Drop Point	Culvert	Completed Fuel Break		Federal Wilderness
Staging Area	Mobile Weather Unit	Completed Hand Line		State Primary Route
Value at Risk	Repeater	Planned Dozer Line		Gravel Road
Other	Hazard	Planned Fuel Break		Dirt Road
Gate	Water Source	Access or Improved Road		Unimproved Road
Bridge		Other		USFS Roads Closed
Water Development or Draft Site		Repair Line		Trail
Stream Crossing				
Resource Location				
Repair Point				

0 0.5 1
Miles Scale: 1:42,500
1 inch equals 8 miles

NR Remote Incident Support
9/16/2022 0602
North American 1983 Datum, Lat/Long Grid

Operations