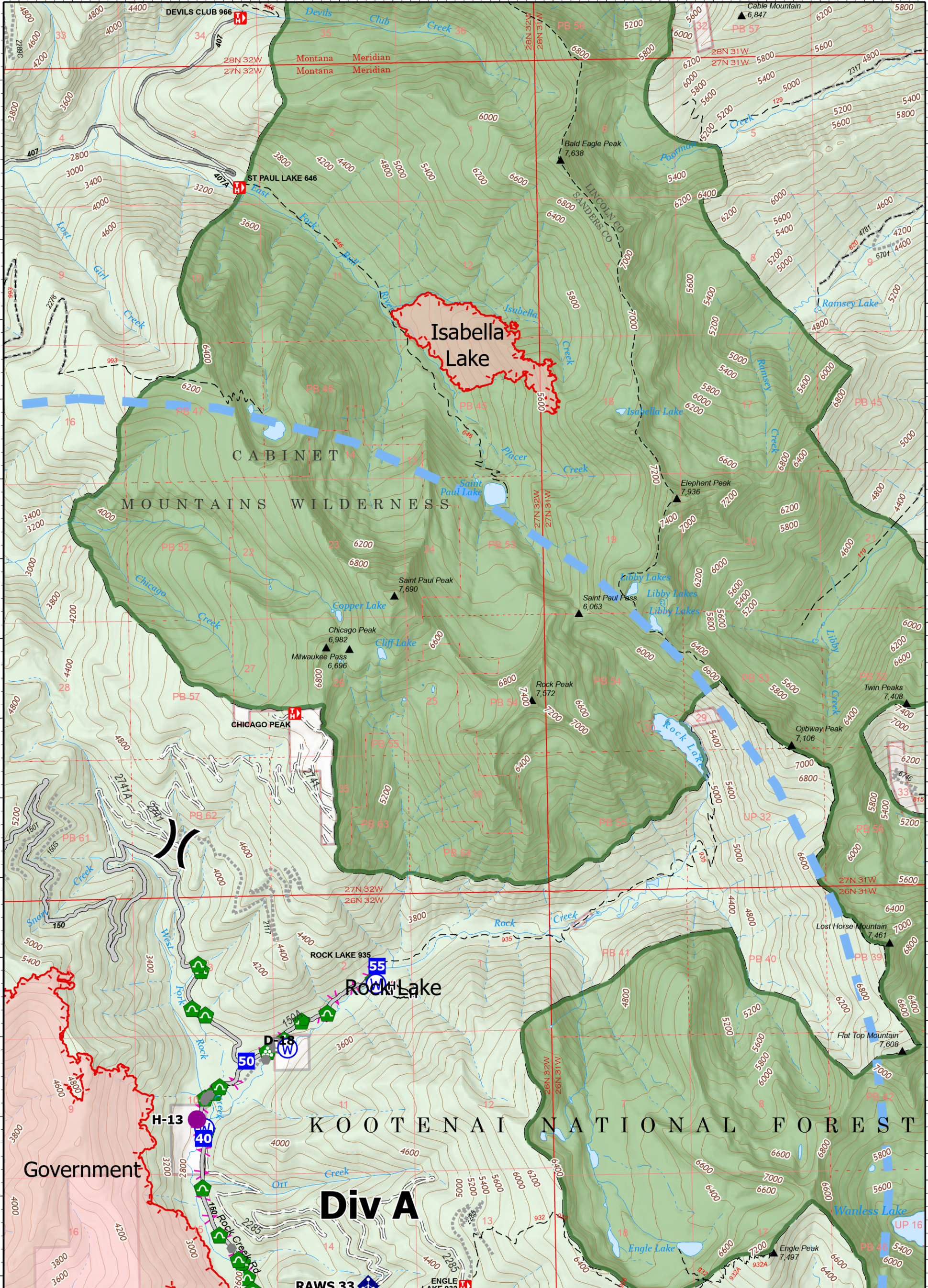


-115°44' -115°43'30" -115°43' -115°42'30" -115°42' -115°41'30" -115°41' -115°40'30" -115°40' -115°39'30" -115°39' -115°38'30" -115°38' -115°37'30" -115°37' -115°36'30" -115°36'



**Operations**  
Isabella Lake  
MTKNF-000248  
280 acres

9/16/2022  
Fire perimeter updated from  
IR on 9/15/2022 @ 2131

0 0.5 1  
Miles  
Scale: 1:42,000  
1 inch equals 0.5 miles

● Label Point	🚧 Repair Point	🔴 Uncontained	🔴 Wildfire Perimeter
⌋ Division Break	🏠 Landing or Log Deck	🔵 Completed Hand Line	🟢 Federal Wilderness
📍 Drop Point	🚧 Dozer Push	🟡 Planned Fuel Break	🟡 Forest Service Land
⚠️ Value at Risk	🚧 Culvert	🟠 Access or Improved Road	🟠 Gravel Road
🏠 Other	🚧 Mobile Weather Unit	⚫ Other	🟠 Dirt Road
🚧 Water Development or Draft Site	📡 Repeater	🟡 Temporary Flight Restriction	🟠 Unimproved Road
🚧 Resource Location	🚰 Water Source		🟠 USFS Roads Closed
			🟠 Trail

NR Remote Incident Support  
9/16/2022 0602  
North American 1983  
Datum: LatLong Grid

Operations