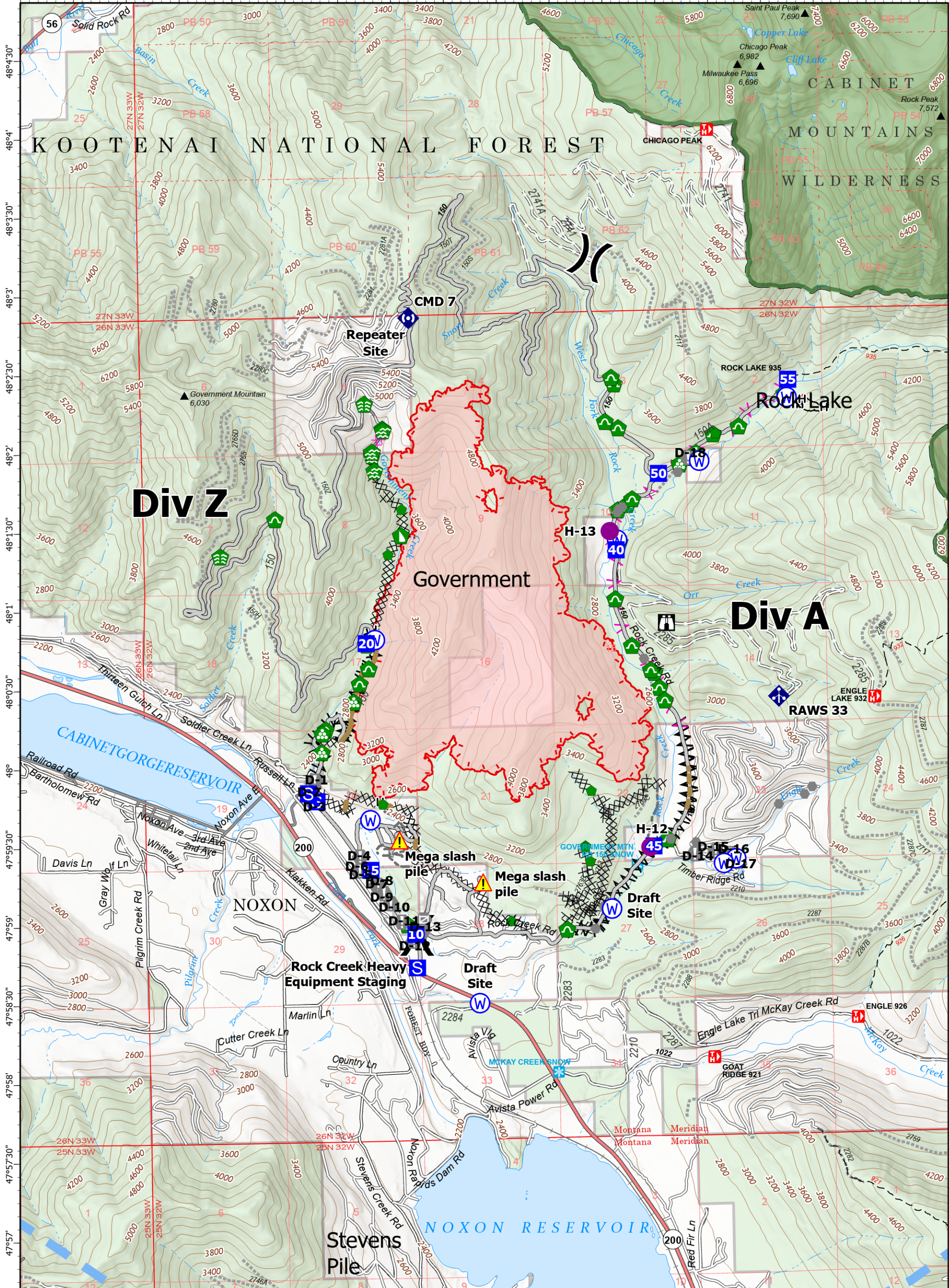
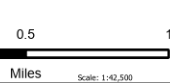


-115°48' -115°47'30" -115°47' -115°46'30" -115°46' -115°45'30" -115°45' -115°44'30" -115°44' -115°43'30" -115°43' -115°42'30" -115°42' -115°41'30" -115°41' -115°40'30" -115°40' -115°39'30"



Operations
 Government
 MTKNF-002240
 9/17/2022
 2,376 acres

Fire perimeter updated from IR on 9/16/2022 @ 2125



- | | | | | |
|---------------------------------|---------------------|-------------------------|------------------------------|---------------------|
| Helispot | Repair Point | Uncontained | Road Repair | Wildfire Perimeter |
| Division Break | Landing or Log Deck | Completed Dozer Line | Temporary Flight Restriction | Forest Service Land |
| Drop Point | Dozer Push | Completed Fuel Break | | Federal Wilderness |
| Staging Area | Culvert | Completed Hand Line | | State Primary Route |
| Lookout | Mobile Weather Unit | Planned Dozer Line | | Gravel Road |
| Value at Risk | Repeater | Planned Fuel Break | | Dirt Road |
| Other | Hazard | Access or Improved Road | | Unimproved Road |
| Gate | Water Source | Other | | USFS Roads Closed |
| Bridge | | Repair Line | | Trail |
| Water Development or Draft Site | | | | |
| Stream Crossing | | | | |
| Resource Location | | | | |



NR Team 7
 9/17/2022 0556
 North American 1983
 Datum: LatLong Grid

Operations