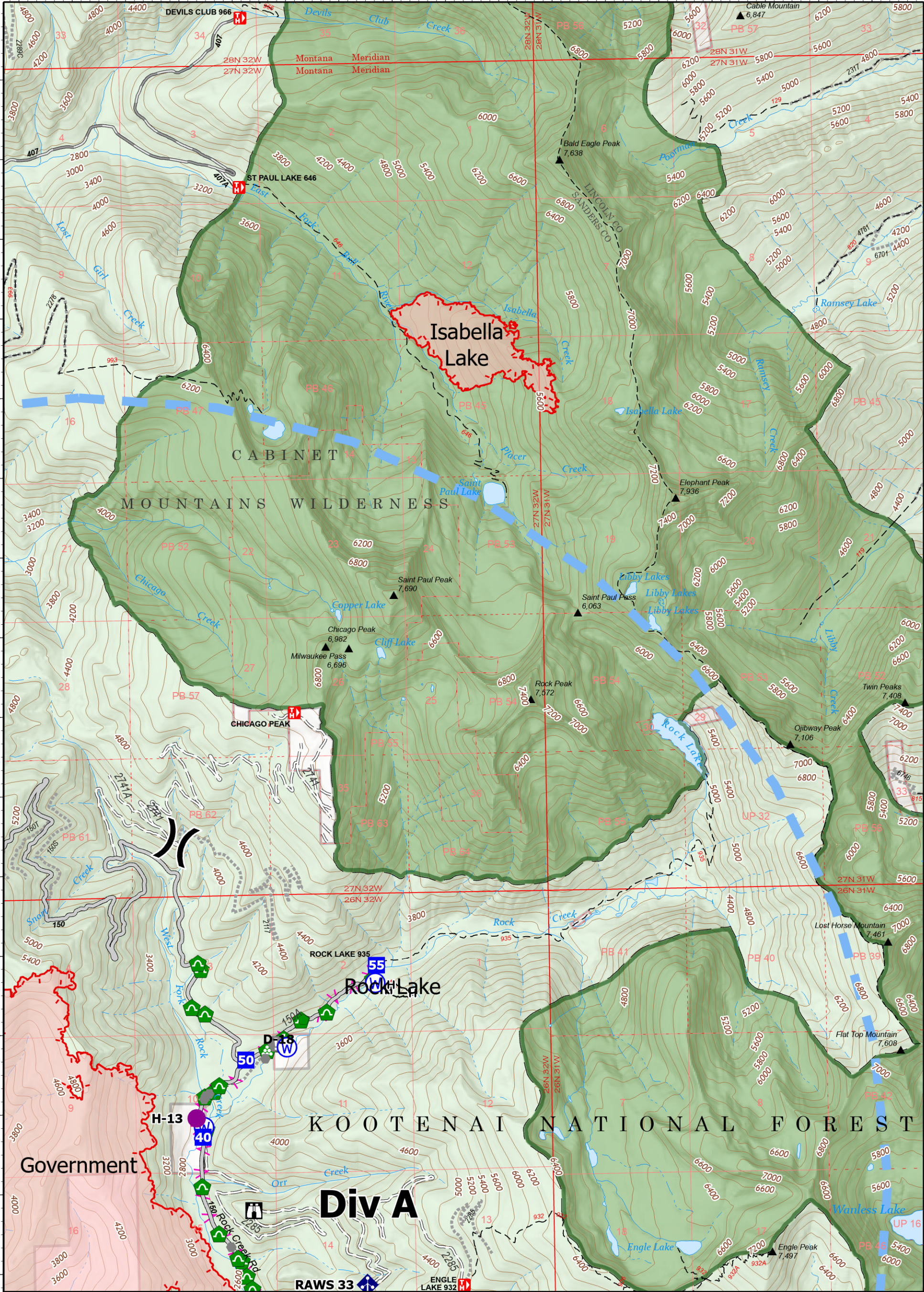




-115°44' -115°43'30" -115°43' -115°42'30" -115°42' -115°41'30" -115°41' -115°40'30" -115°40' -115°39'30" -115°39' -115°38'30" -115°38' -115°37'30" -115°37' -115°36'30" -115°36'



Operations
Isabella Lake
MTKNF-000248
280 acres
9/17/2022
Fire perimeter updated from IR on 9/15/2022 @ 2131

● Label Point	📍 Resource Location	🚰 Water Source	🔴 Wildfire Perimeter
⏸ Division Break	🛠 Repair Point	🚧 Uncontained	🌲 Federal Wilderness
📍 Drop Point	🏠 Landing or Log Deck	👤 Completed Hand Line	🏠 Forest Service Land
👤 Lookout	🚧 Dozer Push	📏 Planned Fuel Break	🛣 Gravel Road
⚠ Value at Risk	🚧 Culvert	🛣 Access or Improved Road	🛣 Dirt Road
🏠 Other	📡 Mobile Weather Unit	⚡ Other	🛣 Unimproved Road
🏠 Water Development or Draft Site	📡 Repeater	🚧 Temporary Flight Restriction	🛣 USFS Roads Closed
			🛣 Trail

Operations

0 0.5 1 Miles

Scale: 1:42,000

1 inch equals 8 miles

NR Team 7
9/17/2022 0556
North American 1983
Datum, Lat,Long Grid