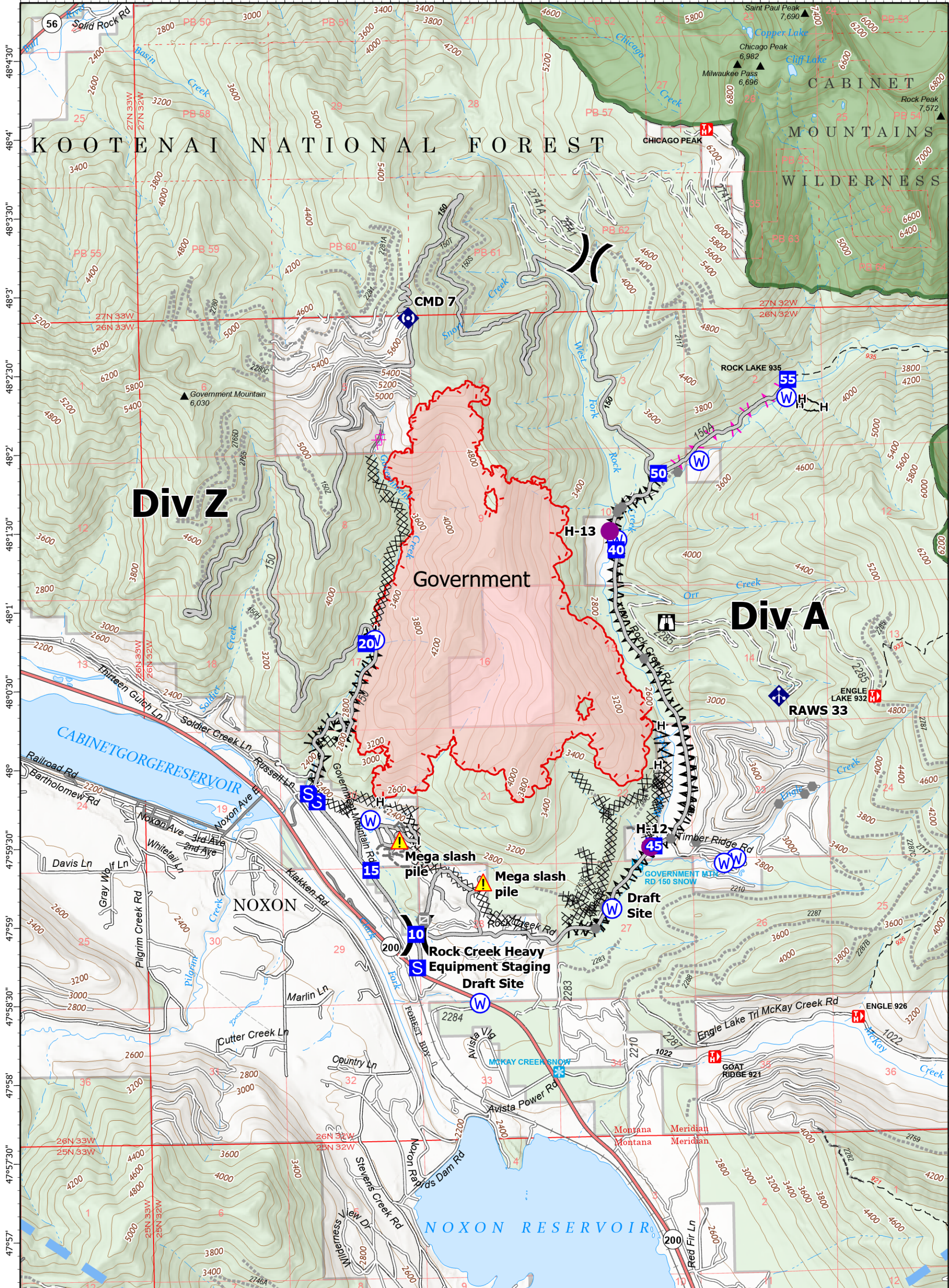
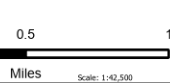


-115°48' -115°47'30" -115°47' -115°46'30" -115°46' -115°45'30" -115°45' -115°44'30" -115°44' -115°43'30" -115°43' -115°42'30" -115°42' -115°41'30" -115°41' -115°40'30" -115°40' -115°39'30"



Operations
 Government
 MTKNF-002240
 9/18/2022
 2,413 acres

Fire perimeter updated from IR on 9/17/2022 @ 2031



- | | | |
|---------------------|------------------------------|---------------------|
| Helispot | Uncontained | Wildfire Perimeter |
| Division Break | Completed Dozer Line | Forest Service Land |
| Drop Point | Completed Fuel Break | Federal Wilderness |
| Staging Area | Completed Hand Line | State Primary Route |
| Lookout | Planned Dozer Line | Gravel Road |
| Other | Planned Fuel Break | Dirt Road |
| Gate | Access or Improved Road | Unimproved Road |
| Bridge | Other | USFS Roads Closed |
| Mobile Weather Unit | Temporary Flight Restriction | Trail |
| Repeater | | |
| Hazard | | |
| Water Source | | |



NR Team 7
 9/18/2022 0608
 North American 1983
 Datum: LatLong Grid

Operations