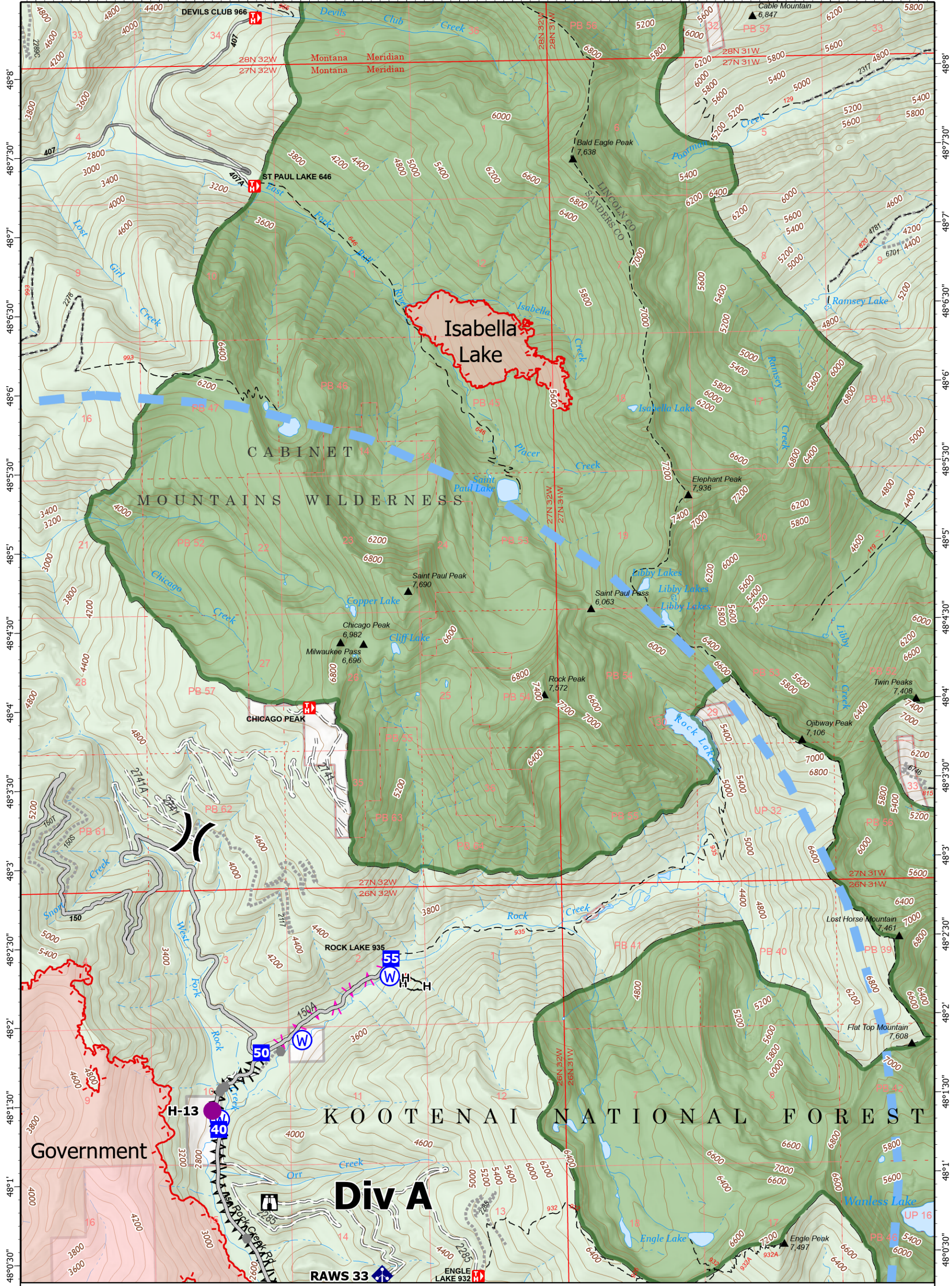
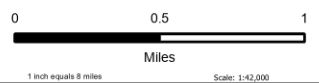


-115°44' -115°43'30" -115°43' -115°42'30" -115°42' -115°41'30" -115°41' -115°40'30" -115°40' -115°39'30" -115°39' -115°38'30" -115°38' -115°37'30" -115°37' -115°36'30" -115°36'



Operations

Isabella Lake
MTKNF-000248
285 acres
9/18/2022
Fire perimeter updated from
IR on 9/17/2022 @ 2031



- Label Point
- Helispot
- ⌋ Division Break
- Drop Point
- ⌠ Lookout
- ⬢ Other
- ⬢ Mobile Weather Unit
- ⬢ Repeater

- Ⓜ Water Source
- Uncontained
- ⌋ Completed Fuel Break
- ⌠ Completed Hand Line
- ⌠ Planned Fuel Break
- Access or Improved Road
- Other
- Temporary Flight Restriction

- Wildfire Perimeter
- Federal Wilderness
- Forest Service Land
- Gravel Road
- Dirt Road
- Unimproved Road
- USFS Roads Closed
- Trail



NR Team 7
9/18/2022 0608
North American 1983
Datum, Lat,Long Grid

Operations