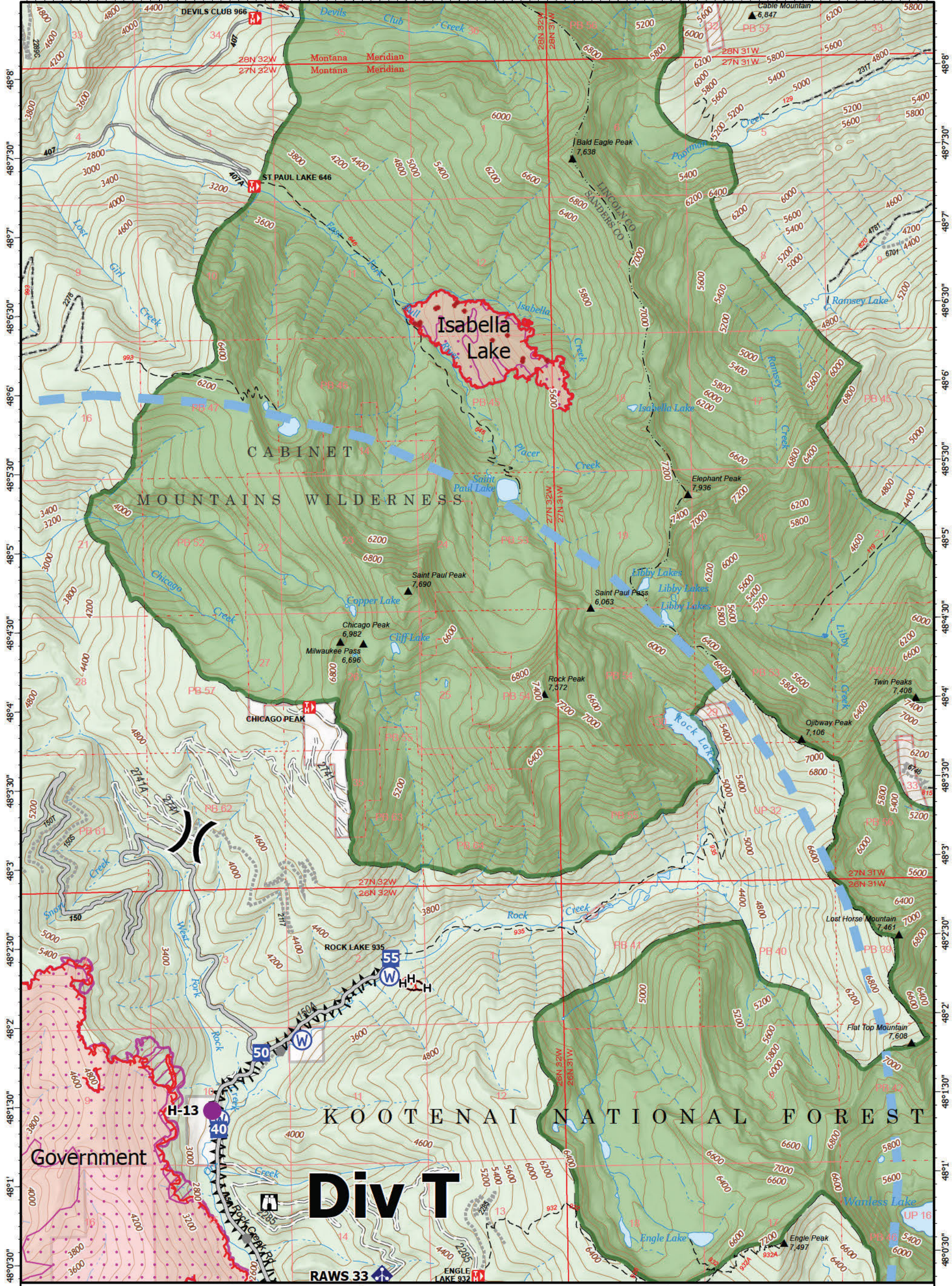


-115°44' -115°43'30" -115°43' -115°42'30" -115°42' -115°41'30" -115°41' -115°40'30" -115°40' -115°39'30" -115°39' -115°38'30" -115°38' -115°37'30" -115°37' -115°36'30" -115°36'



Operations

Isabella Lake
MTKNF-000248
287 acres
9/21/2022
Fire perimeter updated from IR on 9/20/2022 @ 1954



- Label Point
- Helispot
-)(Division Break
- Drop Point
- ⚠ Lookout
- Other
- ⚡ Mobile Weather Unit

- ⚡ Repeater
- Ⓜ Water Source
- IR Isolated Heat Source
- Uncontained
- Completed Fuel Break
- Completed Hand Line
- Access or Improved Road

- Other
- Temporary Flight Restriction
- IR 1957 20220919
- IR Intense Heat
- IR Scattered Heat
- Wildfire Perimeter
- Federal Wilderness

- Forest Service Land
- Gravel Road
- Dirt Road
- Unimproved Road
- USFS Roads Closed
- Trail



NR Team 2
9/21/2022 0503
North American 1983
Datum, Lat/Long Grid

Operations

