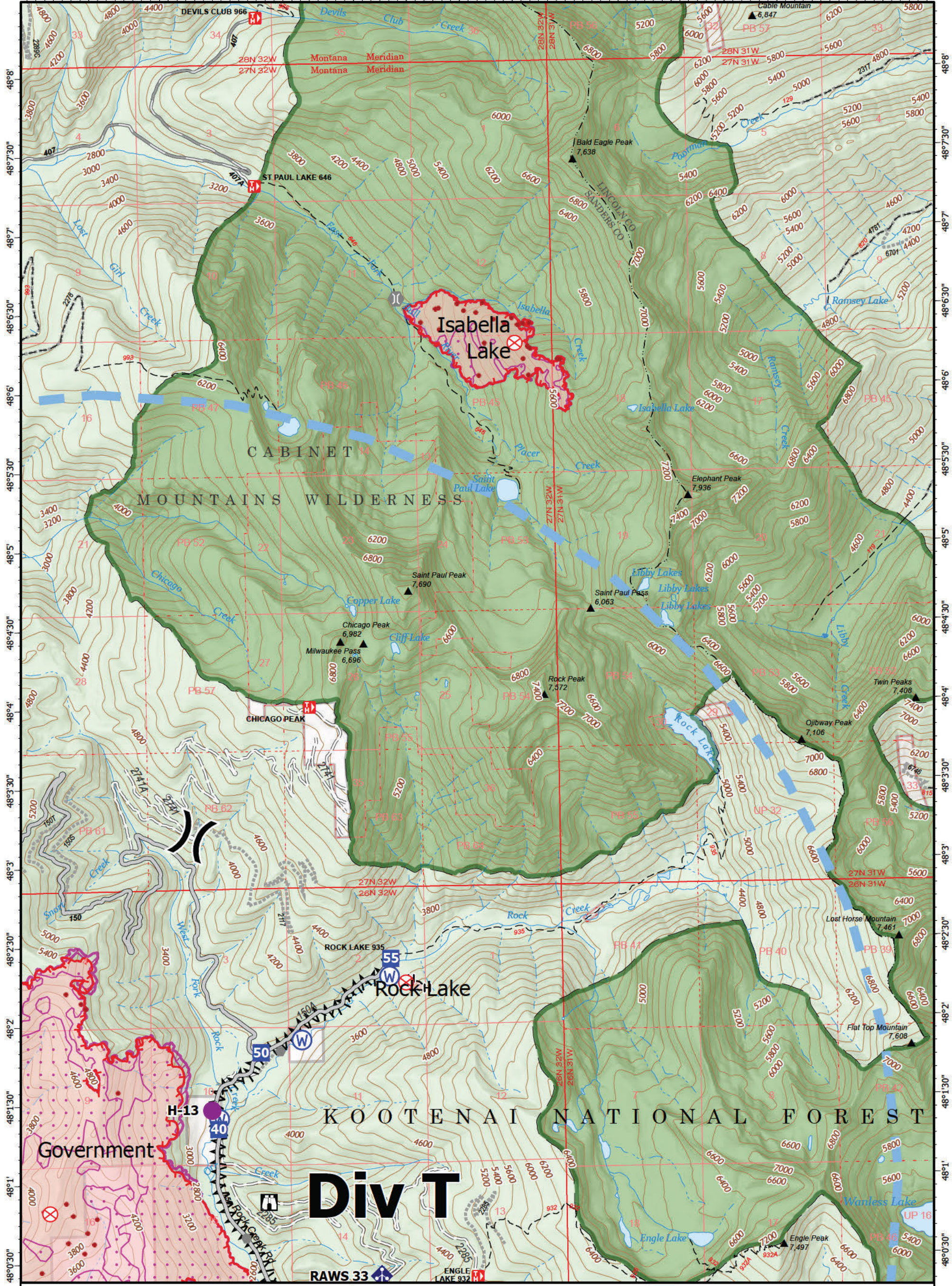
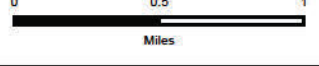


-115°44' -115°43'30" -115°43' -115°42'30" -115°42' -115°41'30" -115°41' -115°40'30" -115°40' -115°39'30" -115°39' -115°38'30" -115°38' -115°37'30" -115°37' -115°36'30" -115°36'



Operations

Isabella Lake
MTKNF-000248
290 acres
9/22/2022
Fire perimeter updated from IR on 9/21/2022 @ 1951



- Label Point
- Helispot
- Division Break
- Drop Point
- Lookout
- Fire Origin
- Other
- Bridge
- Mobile Weather Unit
- Repeater
- Water Source
- IR Isolated Heat Source
- Uncontained
- Completed Fuel Break
- Completed Hand Line
- Access or Improved Road
- Other
- Temporary Flight Restriction
- IR 1957 20220919
- IR Intense Heat
- IR Scattered Heat
- Wildfire Perimeter
- Federal Wilderness
- Forest Service Land
- Gravel Road
- Dirt Road
- Unimproved Road
- USFS Roads Closed
- Trail



NR Team 2
9/22/2022 0455
North American 1983
Datum, Lat/Long Grid

Operations