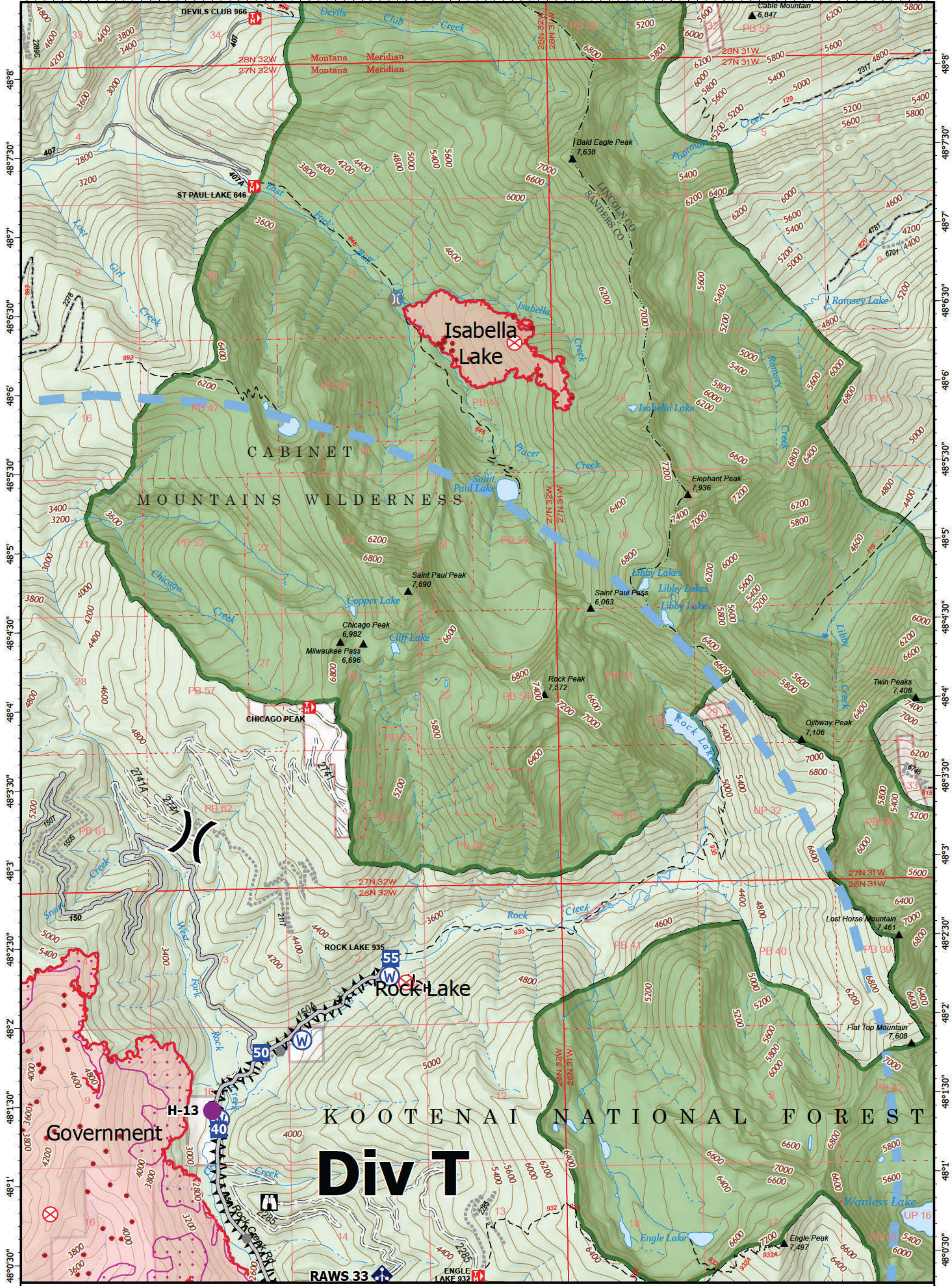


-115°44' -115°43'30" -115°43' -115°42'30" -115°42' -115°41'30" -115°41' -115°40'30" -115°40' -115°39'30" -115°39' -115°38'30" -115°38' -115°37'30" -115°37' -115°36'30" -115°36'



Operations

Isabella Lake
MTKNF-000248
290 acres
9/24/2022
Fire perimeter updated from IR on 9/23/2022 @ 2039



- | | | | |
|--------------------|---------------------------|--------------------------------|-----------------------|
| ● Label Point | ⚡ Bridge | H— Completed Hand Line | 🌿 Federal Wilderness |
| ● Helispot | 📶 Mobile Weather Unit | — Access or Improved Road | 🏠 Forest Service Land |
|) (Division Break | 📶 Repeater | --- Other | 🛣 Gravel Road |
| ● Drop Point | 🌊 Water Source | 🚫 Temporary Flight Restriction | 🛣 Dirt Road |
| 🏠 Lookout | 🔴 IR Isolated Heat Source | 🚫 IR 1957 20220919 | 🛣 Unimproved Road |
| ⊗ Fire Origin | 🔴 Uncountained | 🚫 IR Scattered Heat | 🚫 USFS Roads Closed |
| ● Other | 🔴 Completed Fuel Break | 🚫 Wildfire Perimeter | 🛣 Trail |



NR Team 2
9/24/2022 0701
North American 1983
Datum: Lat/Long Grid

Operations

