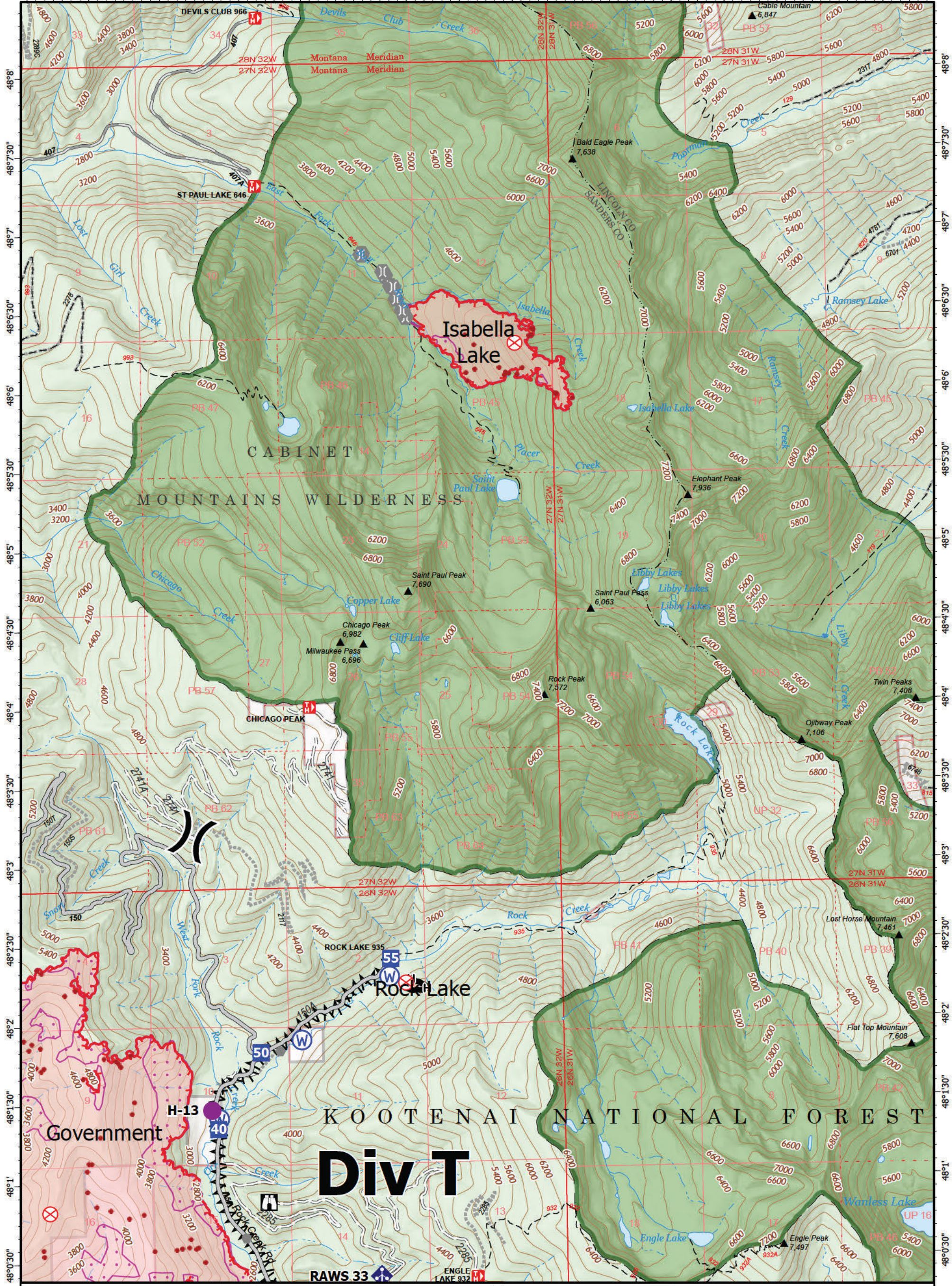
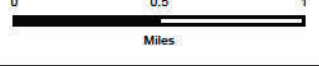


-115°44' -115°43'30" -115°43' -115°42'30" -115°42' -115°41'30" -115°41' -115°40'30" -115°40' -115°39'30" -115°39' -115°38'30" -115°38' -115°37'30" -115°37' -115°36'30" -115°36'



Operations

Isabella Lake
MTKNF-000248
290 acres
9/25/2022
Fire perimeter updated from IR on 9/24/2022 @ 1952



- | | | | |
|----------------|-------------------------|-------------------------|---------------------|
| Label Point | Bridge | Completed Fuel Break | Federal Wilderness |
| Helispot | Mobile Weather Unit | Completed Hand Line | Forest Service Land |
| Division Break | Repeater | Access or Improved Road | Gravel Road |
| Drop Point | Water Source | Other | Dirt Road |
| Lookout | IR Isolated Heat Source | IR 1957 20220919 | Unimproved Road |
| Fire Origin | Contained | IR Scattered Heat | USFS Roads Closed |
| Other | Uncontained | Wildfire Perimeter | Trail |



NR Team 2
9/25/2022 0501
North American 1983
Datum, Lat/Long Grid

Operations