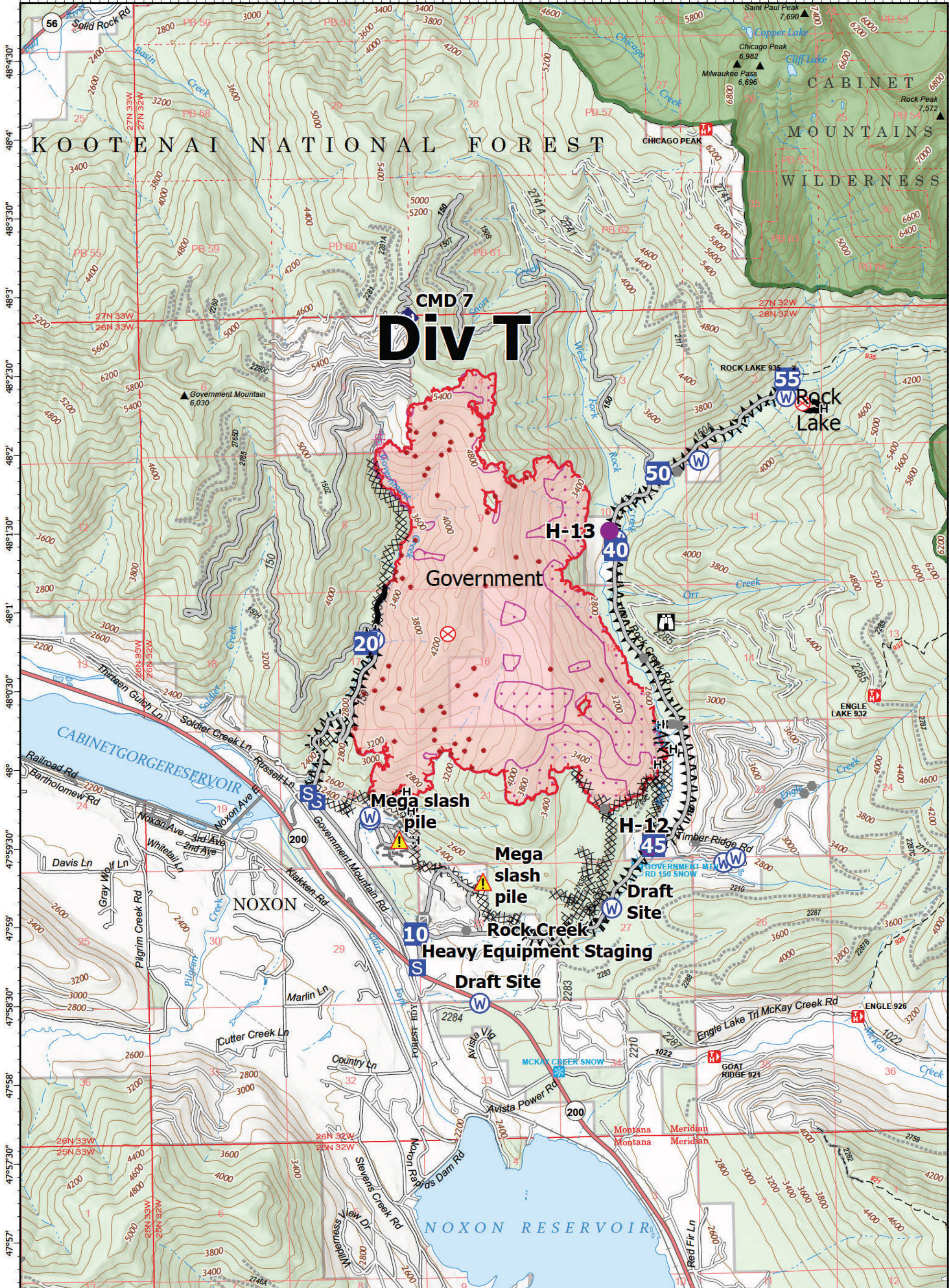


-115°48' -115°47'30" -115°47' -115°46'30" -115°46' -115°45'30" -115°45' -115°44'30" -115°44' -115°43'30" -115°43' -115°42'30" -115°42' -115°41'30" -115°41' -115°40'30" -115°40' -115°39'30"



DIV T

CMD 7

Government

H-13

20

50

40

55

Rock Lake

Mega slash pile

Mega slash pile

Draft Site

10

Heavy Equipment Staging

Draft Site

Rock Creek

H-12

45

ENGLE LAKE 926

GOAT RIDGE 921

NOXON RESERVOIR

Operations
Government
MTKNF-002240
9/27/2022
2,783 acres

Fire perimeter updated from IR on 9/26/2022 @ 1955



- Helispot
- Drop Point
- Staging Area
- Fire Origin
- Other
- Gate
- Bridge

- Repeater
- Hazard
- Water Source
- IR Isolated Heat Source
- IR 1957 20220919
- IR Scattered Heat

- Contained
- Uncontained
- Completed Dozer Line
- Completed Fuel Break
- Completed Hand Line
- Planned Dozer Line

- Access or Improved Road
- Other
- Wildfire Perimeter
- Forest Service Land
- Federal Wilderness
- State Primary Route

- Gravel Road
- Dirt Road
- Unimproved Road
- USFS Roads Closed
- Trail



Register Type 3
9/27/2022 0434
North American 1983
Datum, Lat/Long Grid

Operations