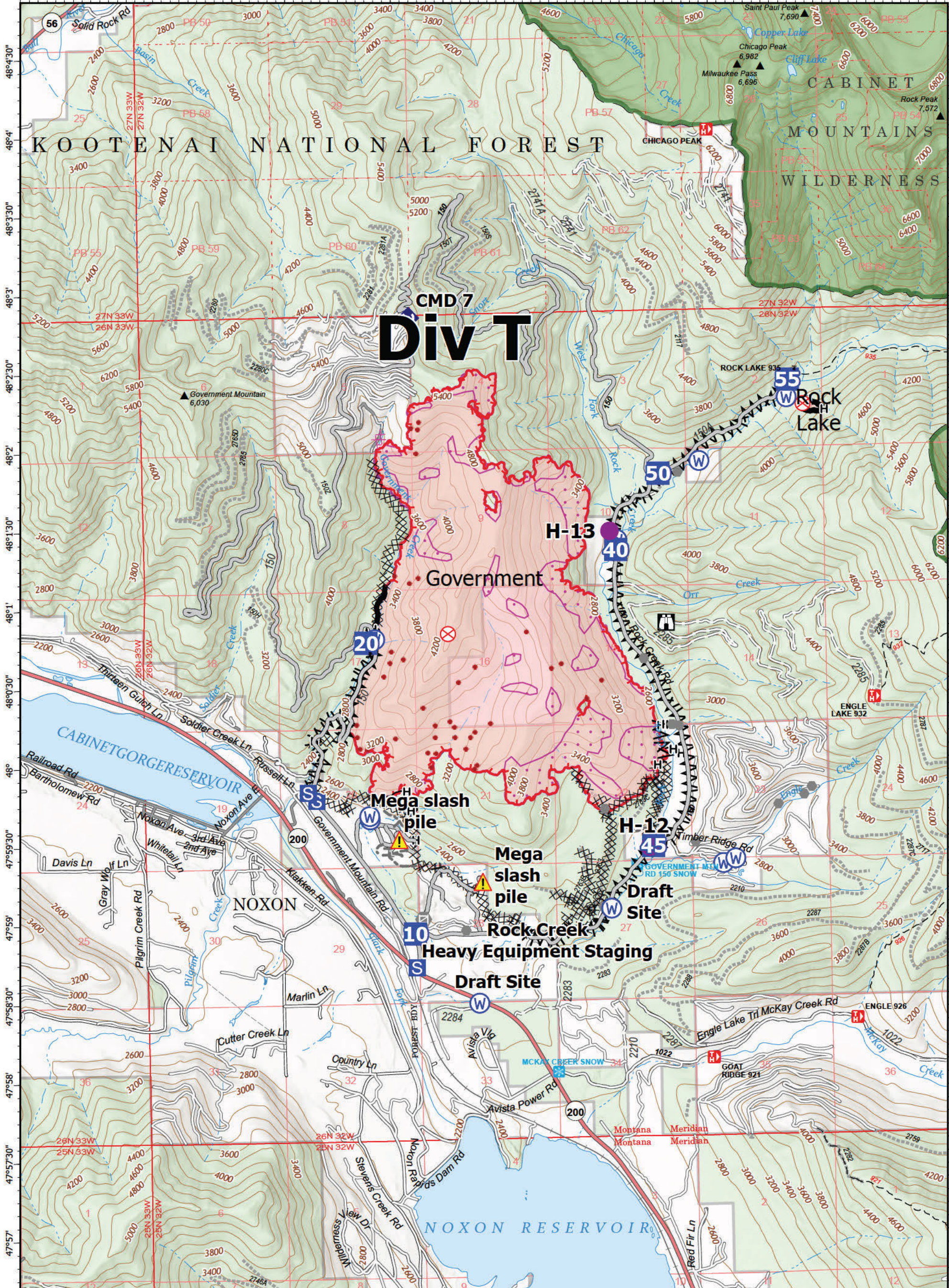


-115°48' -115°47'30" -115°47' -115°46'30" -115°46' -115°45'30" -115°45' -115°44'30" -115°44' -115°43'30" -115°43' -115°42'30" -115°42' -115°41'30" -115°41' -115°40'30" -115°40' -115°39'30"



DIV T

CMD 7

H-13

Government

20

Mega slash pile

Mega slash pile

H-12

Draft Site

Rock Creek Heavy Equipment Staging

10

Draft Site

Operations
 Government
 MTKNF-002240
 9/28/2022
 2,785 acres

Fire perimeter updated from IR on 9/27/2022 @ 2143

- | | | | | |
|--------------|-------------------------|----------------------|-------------------------|-------------------|
| Helispot | Repeater | Contained | Access or Improved Road | Gravel Road |
| Drop Point | Hazard | Uncontained | Other | Dirt Road |
| Staging Area | Water Source | Completed Dozer Line | Wildfire Perimeter | Unimproved Road |
| Fire Origin | IR Isolated Heat Source | Completed Fuel Break | Forest Service Land | USFS Roads Closed |
| Other | IR 1957 20220919 | Completed Hand Line | Federal Wilderness | Trail |
| Gate | IR Scattered Heat | Planned Dozer Line | State Primary Route | |
| Bridge | | | | |

Register Type 3
 9/28/2022 0414
 North American 1983
 Datum, Lat/Long Grid

Operations