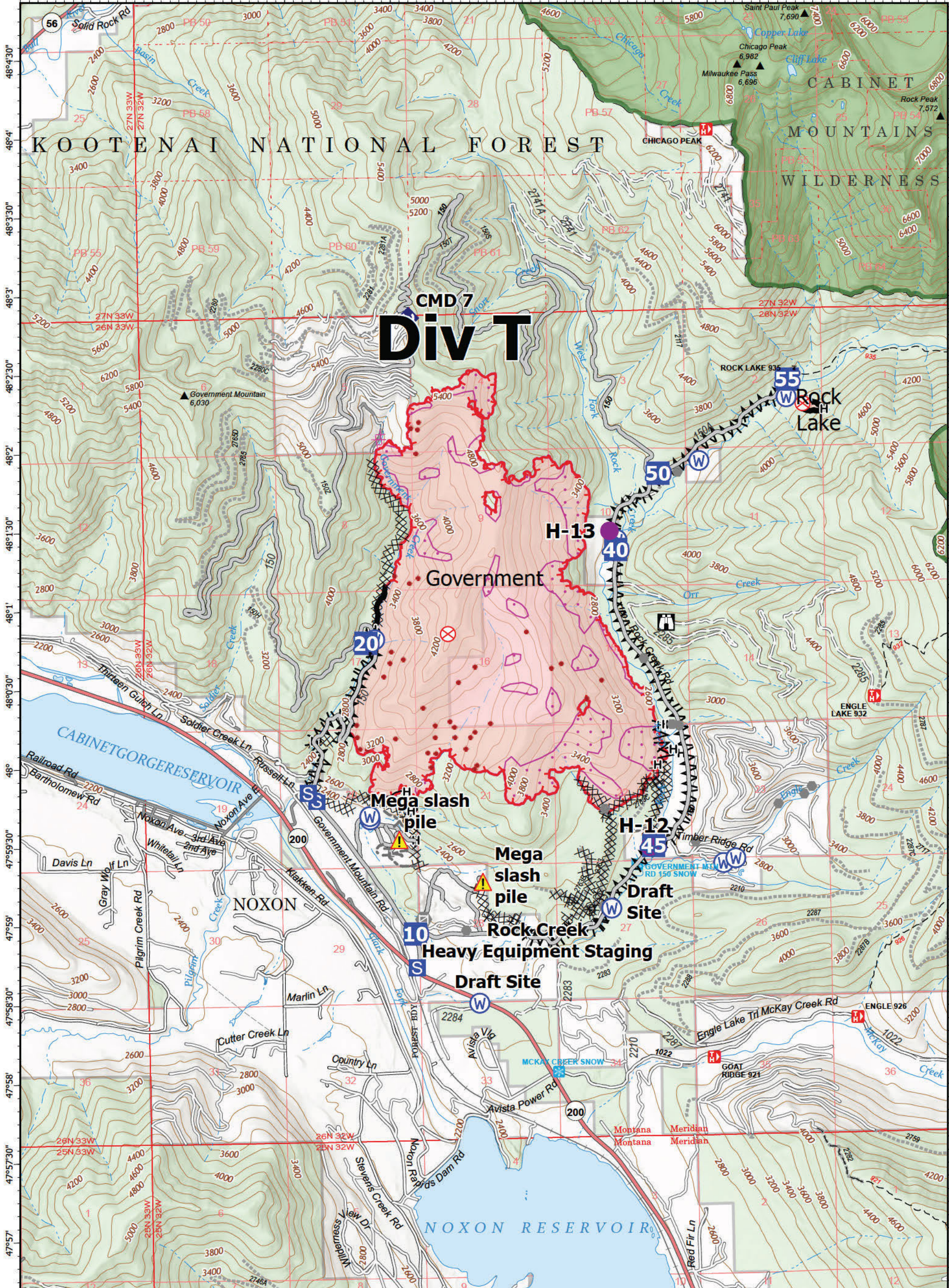


-115°48' -115°47'30" -115°47' -115°46'30" -115°46' -115°45'30" -115°45' -115°44'30" -115°44' -115°43'30" -115°43' -115°42'30" -115°42' -115°41'30" -115°41' -115°40'30" -115°40' -115°39'30"



DIV T

CMD 7

Government

H-13

20

50

40

55

Rock Lake

Mega slash pile

Mega slash pile

Draft Site

10

Heavy Equipment Staging

Draft Site

Rock Creek

H-12

45

ENGLE 926

McKay Creek Rd

ENGLE 926

McKay Creek

ENGLE 926

McKay Creek

ENGLE 926

McKay Creek

ENGLE 926

McKay Creek

ENGLE 926

McKay Creek

ENGLE 926

McKay Creek

ENGLE 926

McKay Creek

ENGLE 926

McKay Creek

ENGLE 926

McKay Creek

ENGLE 926

McKay Creek

ENGLE 926

McKay Creek

ENGLE 926

McKay Creek

ENGLE 926

McKay Creek

ENGLE 926

McKay Creek

ENGLE 926

McKay Creek

ENGLE 926

McKay Creek

Operations
Government
MTKNF-002240
9/30/2022
2,785 acres

Fire perimeter updated from IR on 9/27/2022 @ 2143



- Helispot
- Drop Point
- Staging Area
- Fire Origin
- Other
- Gate
- Bridge

- Repeater
- Hazard
- Water Source
- IR Isolated Heat Source
- IR 1957 20220919
- IR Scattered Heat

- Contained
- Uncontained
- Completed Dozer Line
- Completed Fuel Break
- Completed Hand Line
- Planned Dozer Line

- Access or Improved Road
- Other
- Wildfire Perimeter
- Forest Service Land
- Federal Wilderness
- State Primary Route

- Gravel Road
- Dirt Road
- Unimproved Road
- USFS Roads Closed
- Trail



Register Type 3
9/30/2022 0401
North American 1983
Datum, Lat/Long Grid

Operations